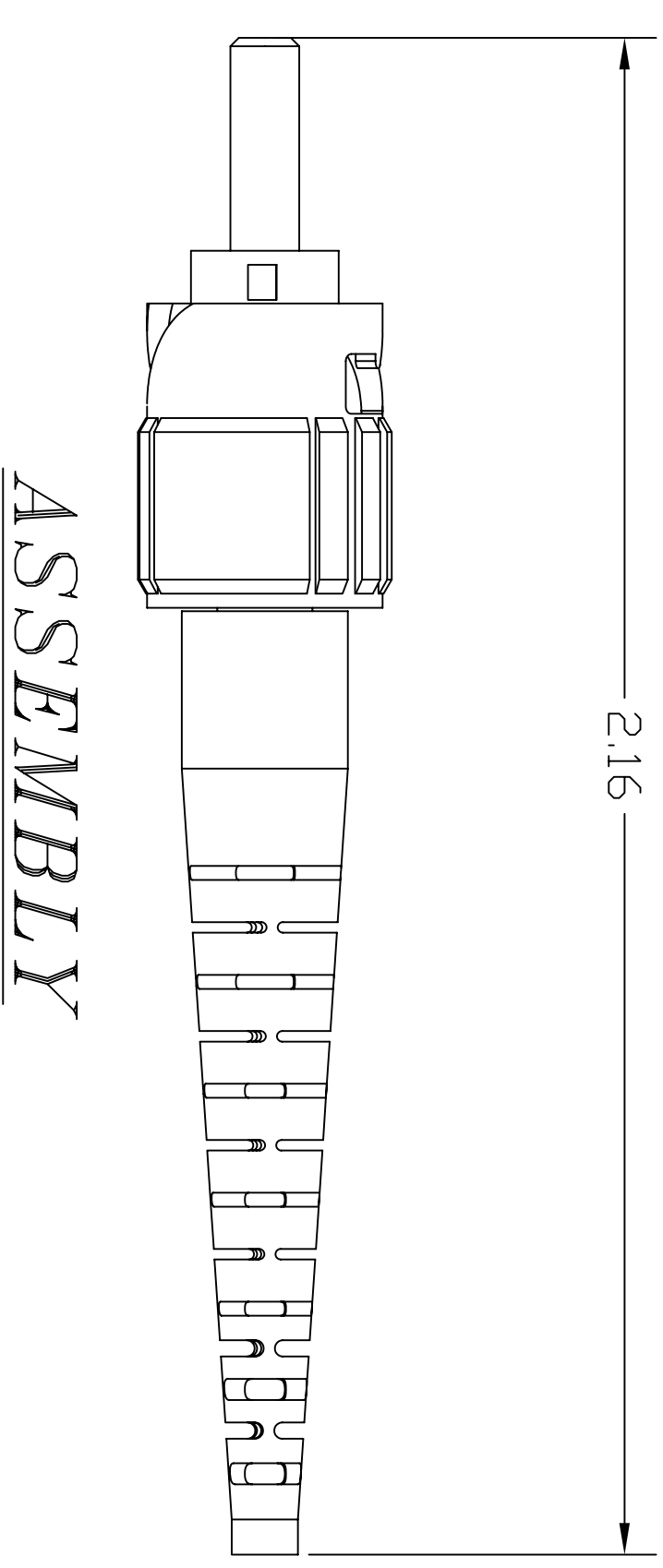
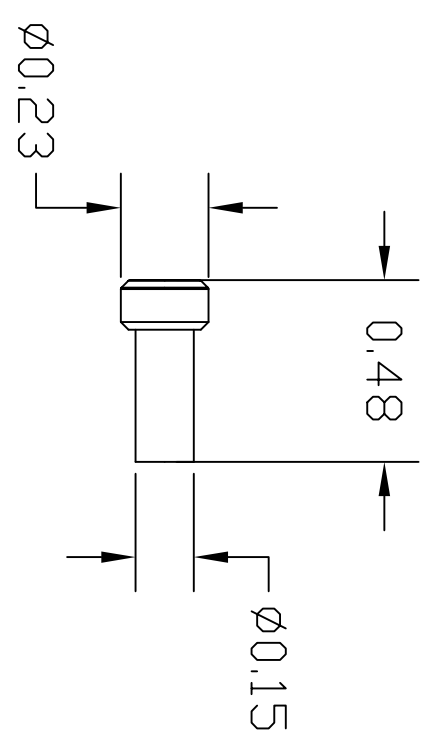
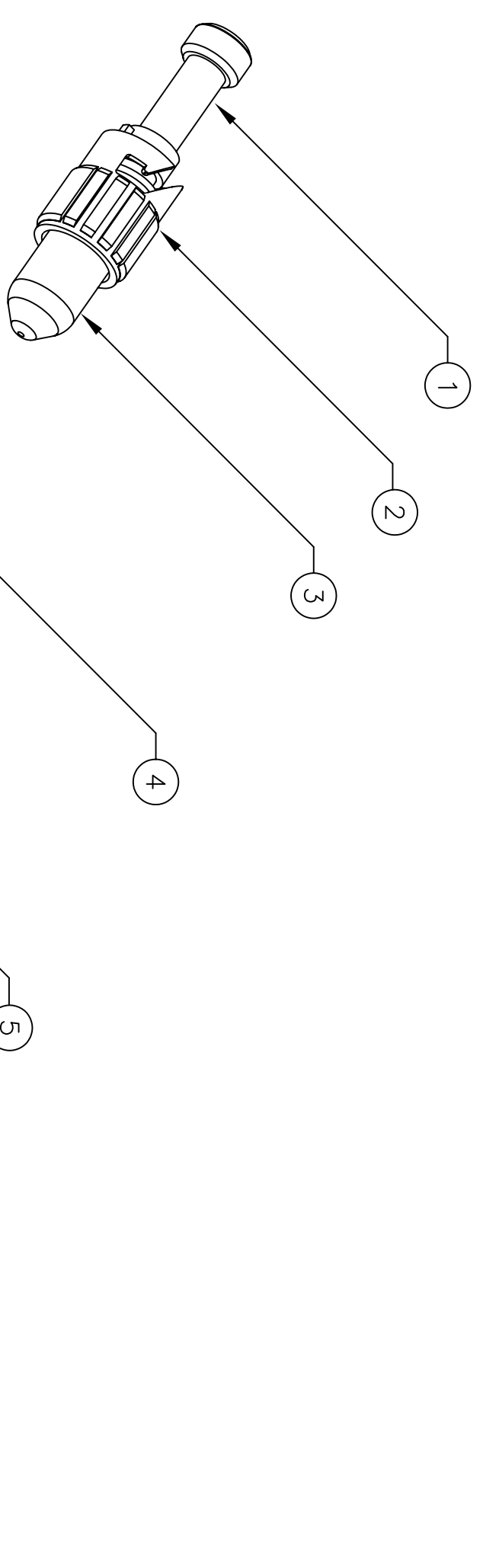


ITEM NO.	DESCRIPTION	QTY.
1	FRONT DUST CAP	100
2	ST CONNECTOR BODY	100
3	REAR DUST CAP	100
4	BEND RELIEF TUBE	100
5	900um BOOT	100
6	SCRIBE GUIDE	1

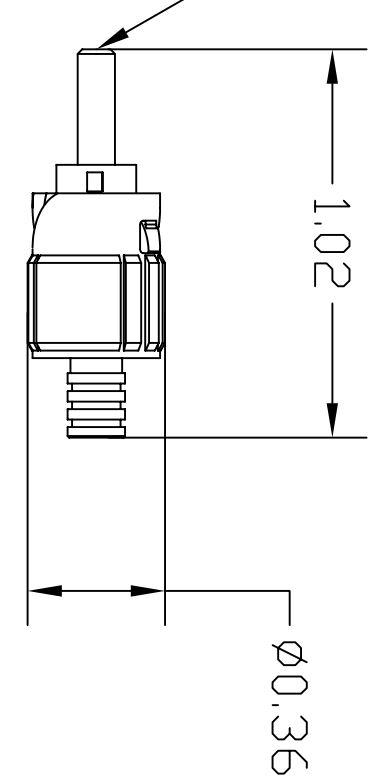
CATALOG NUMBER	DESCRIPTION
FCSTM100R	ADHESIVE CONNECTOR, ST MULTIMODE - 100 PACK



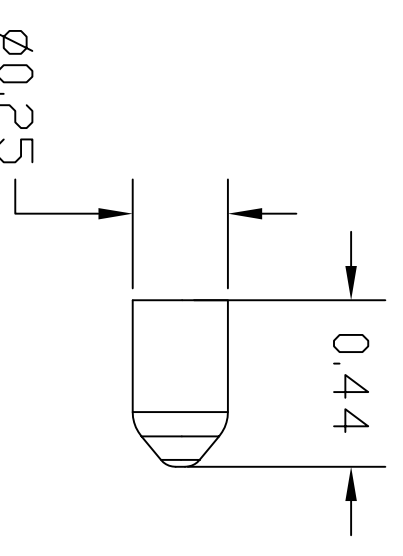
**ASSEMBLY**



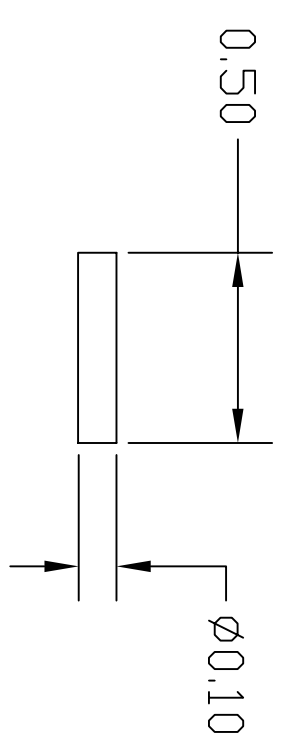
**FRONT DUST CAP**  
(SHIPPED INSTALLED)



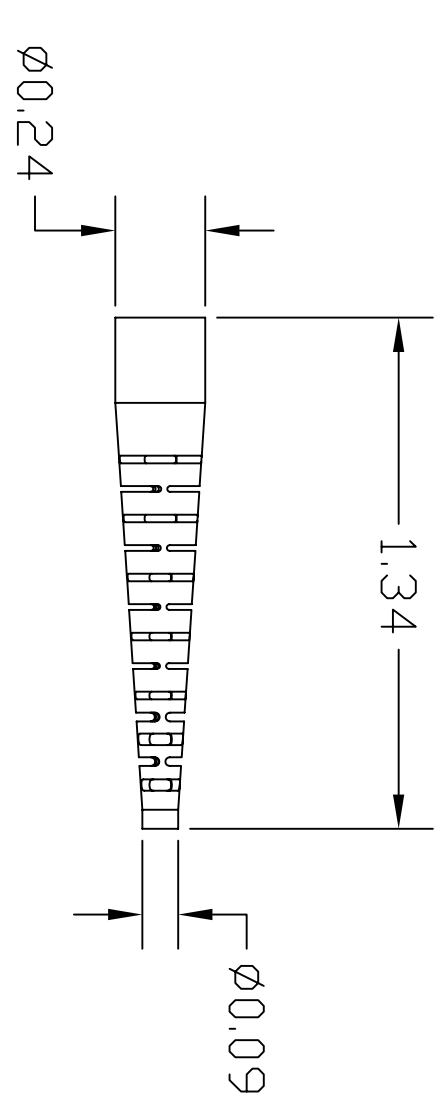
**ST CONNECTOR BODY**  
(SHIPPED INSTALLED)



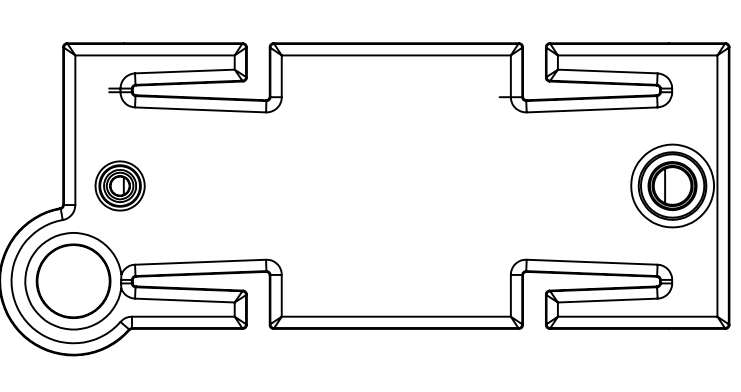
**REAR DUST CAP**  
(SHIPPED INSTALLED)



**BEND RELIEF TUBE**



**900um BOOT**  
(TELCORDIA STYLE)



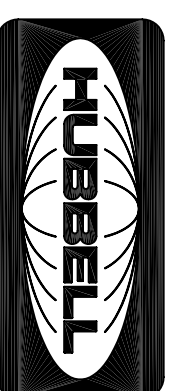
**FIBER SCRIBE GUIDE**

(INCLUDED FREE IN ALL PACKS OF 100 CONNECTORS)

- NOTES:
1. CONNECTOR CAN BE USED WITH EITHER EPOXY OR ANAEROBIC ADHESIVES.
  2. CONNECTOR TERMINATES EASILY ON 900um BUFFERED FIBER.
  3. CONNECTOR IS TIA/EIA-568-B.3 COMPLIANT.
  4. CONNECTOR USES A PC RADIUS TIP ZIRCONIA CERAMIC FERRULE.
  5. CONNECTOR BODY IS NICKEL PLATED MACHINED BRASS.
  6. COUPLING NUT IS NICKEL PLATED ZINC DIE CAST.
  7. 900um BOOT IS TELCORDIA STYLE ENGINEERING THERMOPLASTIC MATERIAL.
  8. TYPICAL INSERTION LOSS = 0.5db
  9. SPECIFICATIONS SUBJECT TO CHANGE WITHOUT PRIOR NOTICE.

REV.	ECN	DATE	DESCRIPTION	CHG BY	APPD BY
A	5542	03/10/05	INITIAL RELEASE	CD	

Created on AUTOCAD		DIMENSIONING AND TOLERANCE PER ANSI Y14.5M-1992 UNLESS OTHERWISE SPECIFIED. DIMENSIONS ARE IN INCHES (MM). XX = ±.01 (25) XXX = ±.005 (127) XXXX = ±.0025 (.0635) ANGLE TOL. #1°	
PROJECT REFERENCE:		MATERIAL:	
DRAWN BY: C. DUSSAULT 3/10/05		CHECKED BY:	
APPROVED BY:		TITLE: ASSEMBLY, BOXED, ADHESIVE CONNECTOR ST MULTIMODE-100 PACK	
SIZE: D		DRAWING NO.: 1173909C	
SCALE: NTS		SHEET: 1 OF 1	
REV.:		A	



**Hubbell Premise Wiring**  
HUBBELL INCORPORATED (Delaware)  
141 Lord's Hill Road, Sturbridge, Connecticut 06378