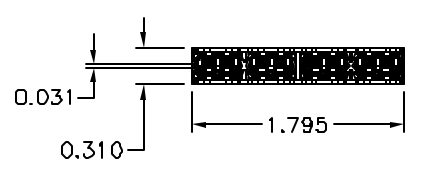
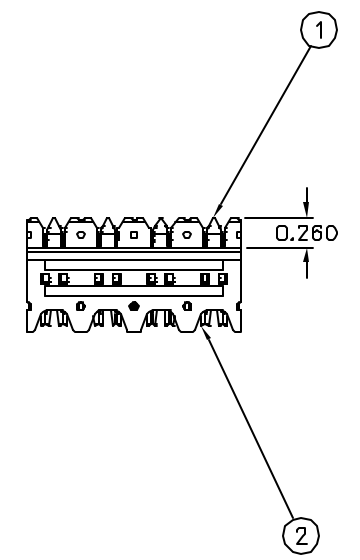
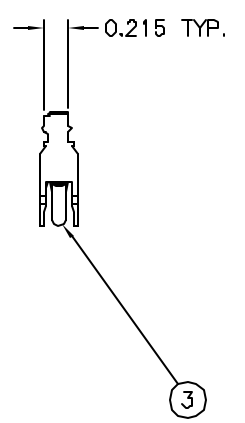
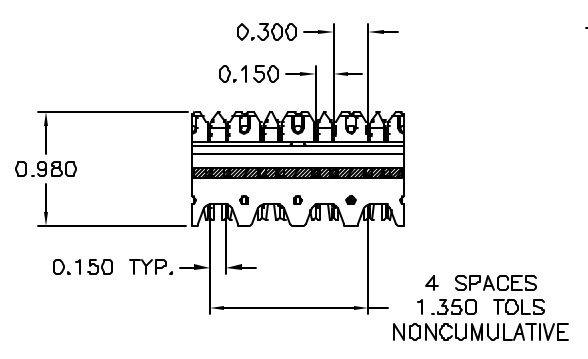
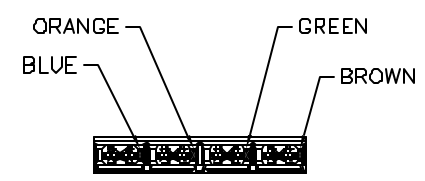


ITEM NO.	DESCRIPTION	QTY.	CATALOG NUMBER	DESCRIPTION
1	4-PAIR 6110 CONNECTING BLOCK	1	6110CB4PR10	4-PAIR 6110 CONNECTING BLOCK (10 PACK)
2	CONTACT	8		
3	CONTACT SHIELD	4		



NOTES:

1. MEETS PROPOSED TIA/E1A AND ISO/IEC CATEGORY 6 CHANNEL PERFORMANCE WHEN USED IN CONJUNCTION WITH THE "NEXT SPEED" CAT 6 SYSTEM (NS6-110) AND APPROVED CABLES.
2. 6110 CONNECTING BLOCKS ARE SOLD IN PACKAGES OF 10

Created on AUTOCAD

DIMENSIONING AND TOLERANCE PER ANSI Y14.5M-1982 UNLESS OTHERWISE SPECIFIED, DIMENSIONS ARE IN INCHES (MM).
 TOLERANCES
 .XX = ±.01 (.25)
 .XXX = ±.005 (.127)
 .XXXX = ±.0025 (.0635)
 ANGLE TOL ±1°

IN ACCEPTING OUR DRAWINGS, BLUEPRINTS, OR SUPPORTING DOCUMENTATION FOR QUOTATION OR OTHER PURPOSES, YOU AGREE NOT TO DISCLOSE TO OTHERS THE IDEAS, INFORMATION, OR DESIGNS SHOWN HEREIN, AND THAT YOU WILL MAKE NO USE OF SAME WITHOUT PERMISSION

PROJECT REFERENCE:

MATERIAL:

DRAWN BY:
PAUL S. MAGUIRE 11/29/01

CHECKED BY:

APPROVED BY:
RAY RODDEN 01/23/02

Hubbell Premise Wiring
 HUBBELL INCORPORATED (Delaware)
 14 Lore's Hill Road, Storington, Connecticut 06378

TITLE:
4-PAIR 6110 BLOCK CONNECTOR ASSY

SIZE: C DRAWING NO.: C77338403

SCALE: 1/1 SHEET 1 OF 1

REV. A

REV.	ECN	DATE	DESCRIPTION	CHG BY	APPD BY
A	4.392	11/29/01	INITIAL RELEASE	PSM	R.R.