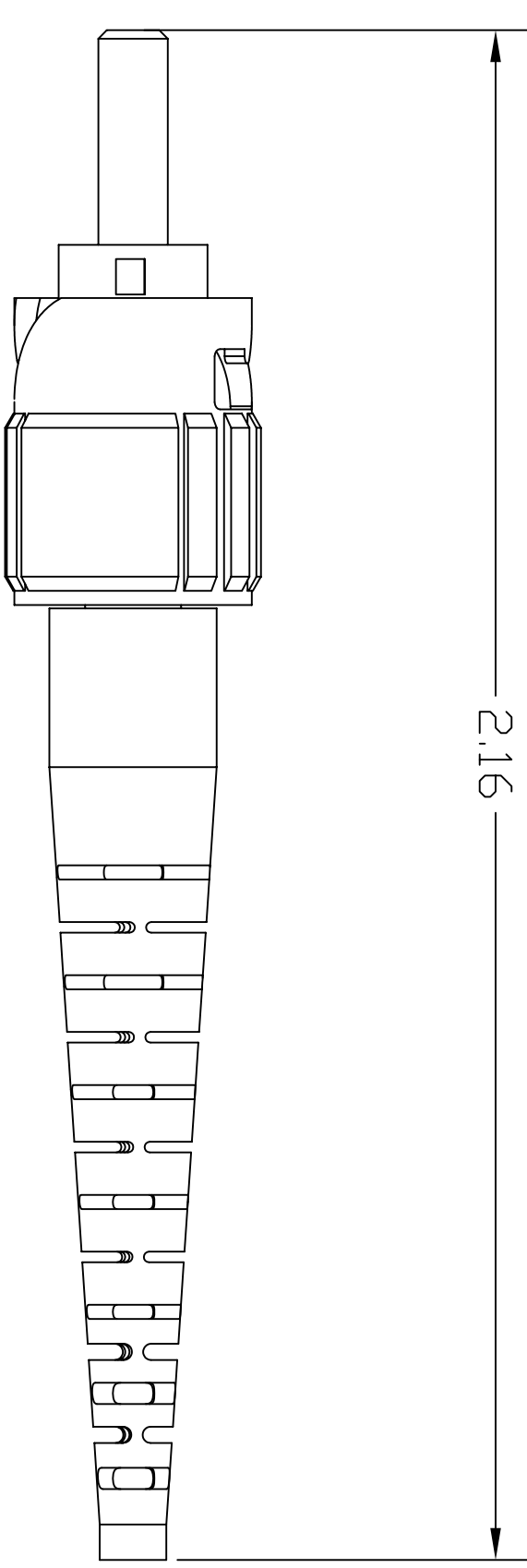
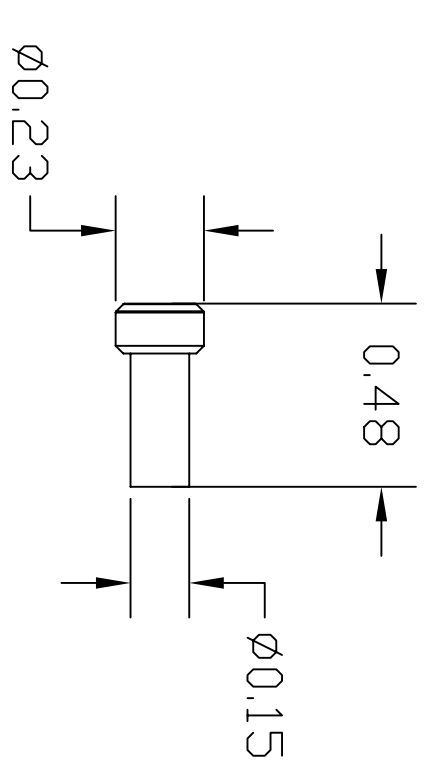


ITEM NO.	DESCRIPTION	QTY.
1	FRONT DUST CAP	1
2	ST CONNECTOR BODY	1
3	REAR DUST CAP	1
4	BEND RELIEF TUBE	1
5	900um BOOT	1

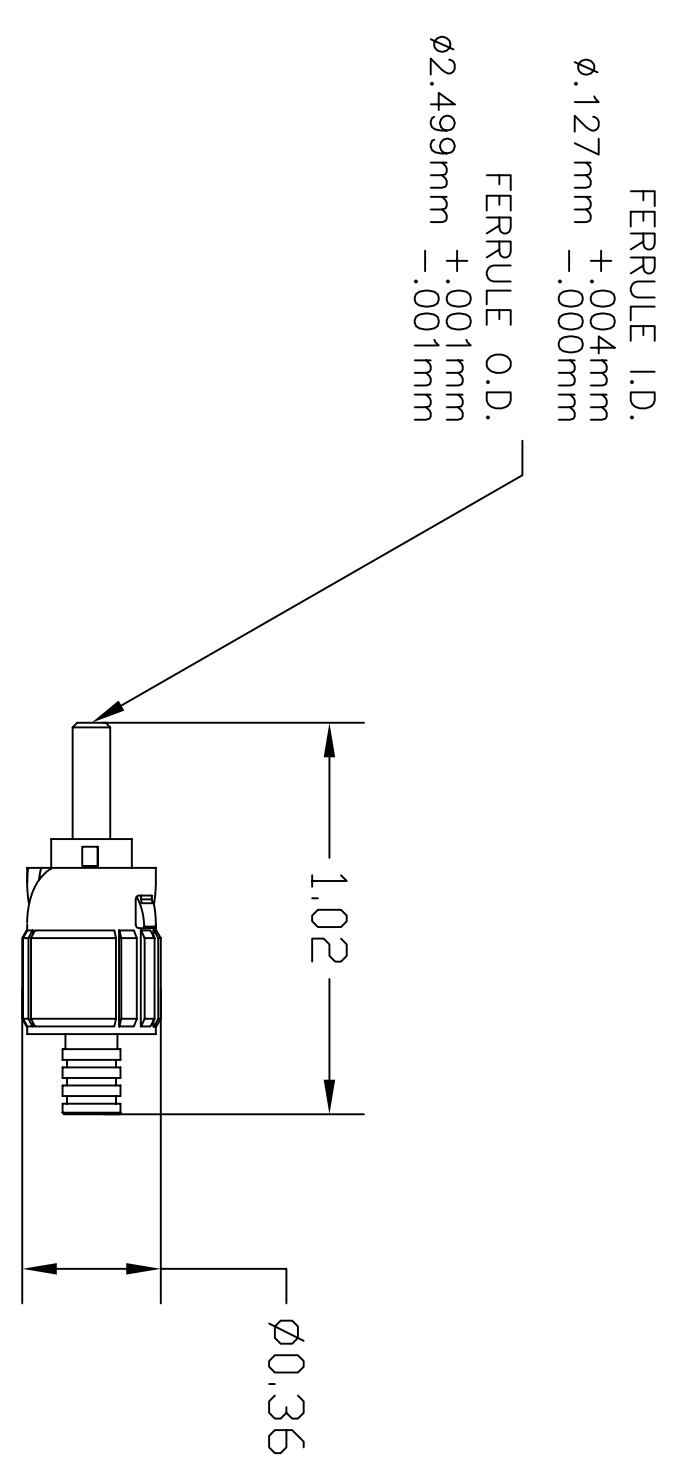
CATALOG NUMBER	DESCRIPTION
FS3M12R	ADHESIVE CONNECTOR, ST MULTIMODE - 12 PACK



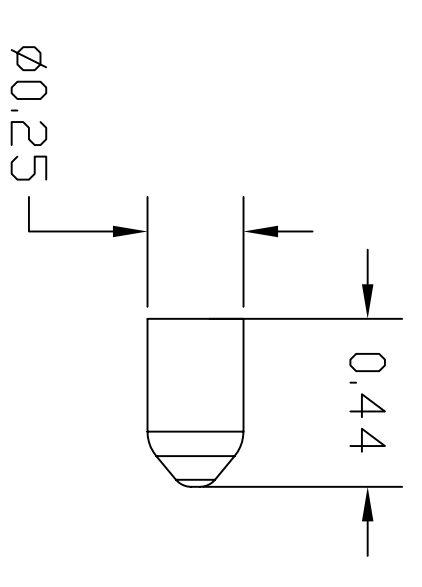
ASSEMBLY



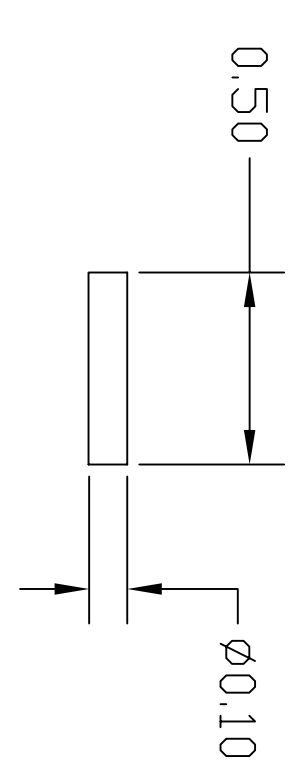
FRONT DUST CAP
(SHIPPED INSTALLED)



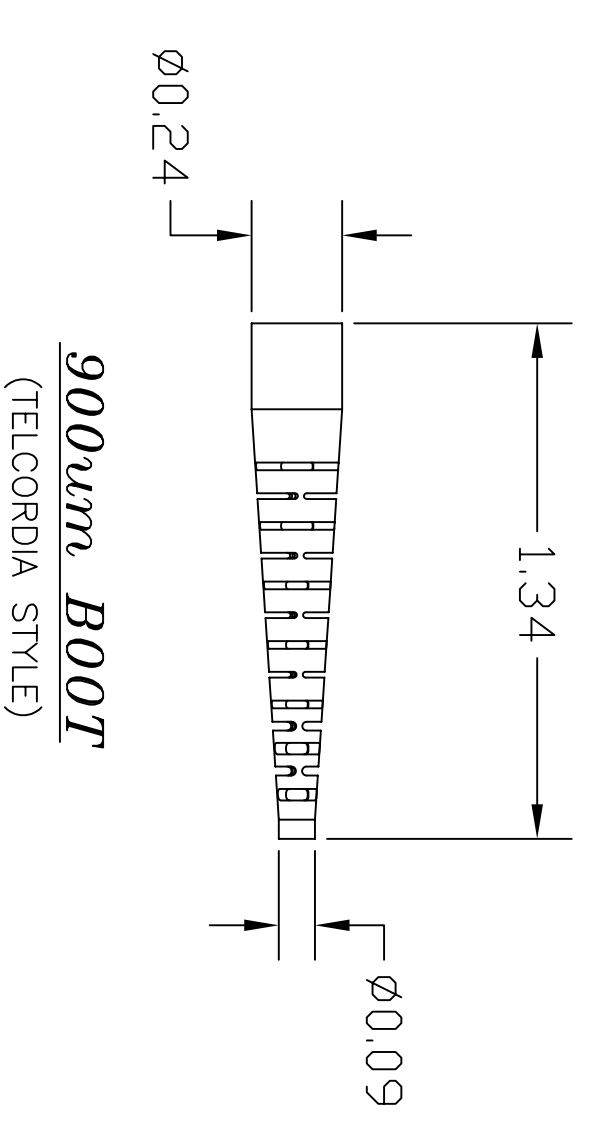
ST CONNECTOR BODY



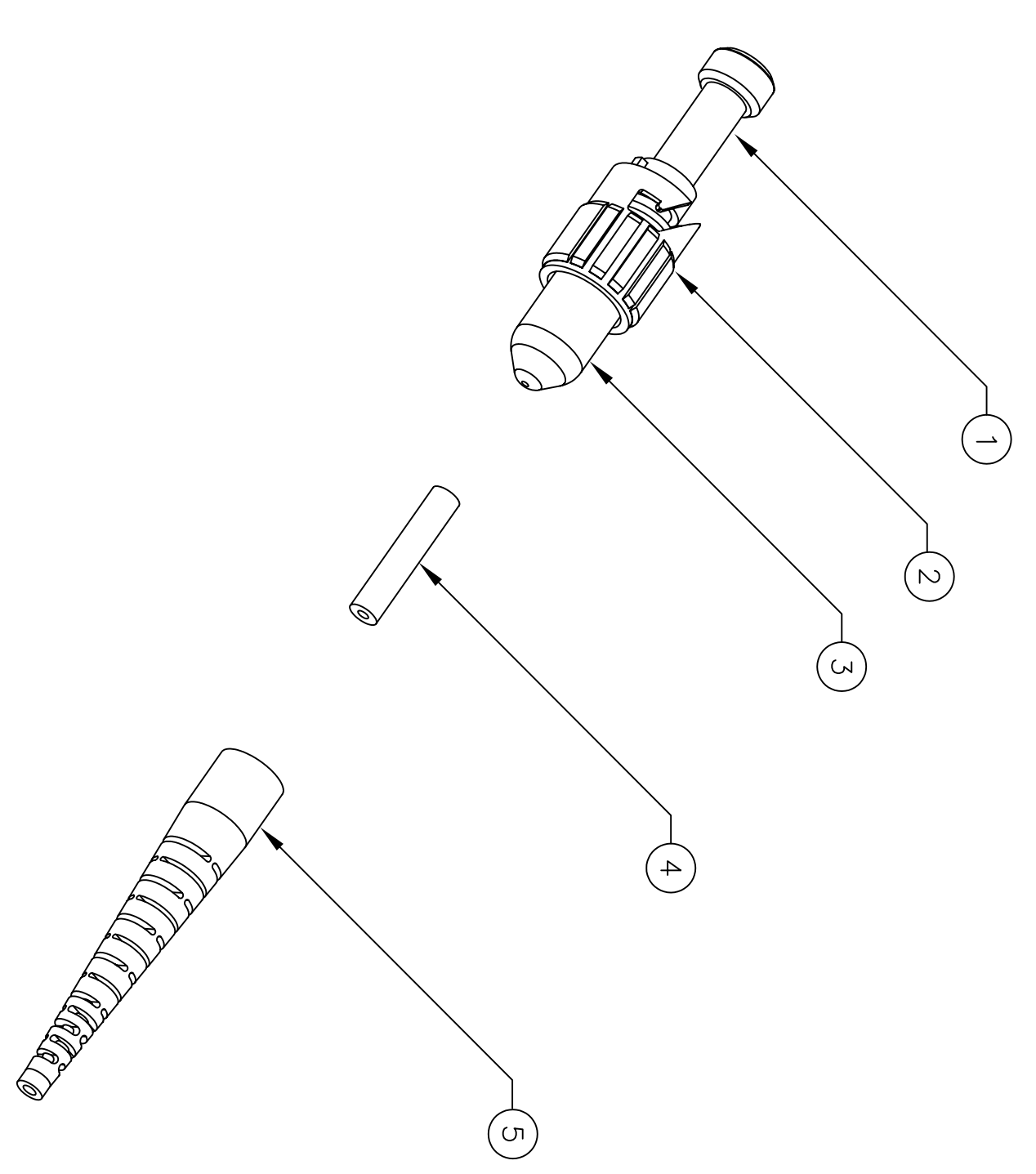
REAR DUST CAP
(SHIPPED INSTALLED)



BEND RELIEF TUBE



900um BOOT
(TELCORDIA STYLE)



- NOTES:
1. CONNECTOR CAN BE USED WITH EITHER EPOXY OR ANAEROBIC ADHESIVES.
 2. CONNECTOR TERMINATES EASILY ON 900um BUFFERED FIBER.
 3. CONNECTOR IS TIA/EIA-568-B.3 COMPLIANT.
 4. CONNECTOR USES A PC RADIUS TIP ZIRCONIA CERAMIC FERRULE.
 5. CONNECTOR BODY IS NICKEL PLATED MACHINED BRASS.
 6. COUPLING NUT IS NICKEL PLATED ZINC DIE CAST.
 7. 900um BOOT IS TELCORDIA STYLE ENGINEERING THERMOPLASTIC MATERIAL.
 8. TYPICAL INSERTION LOSS = 0.5db
 9. SPECIFICATIONS SUBJECT TO CHANGE WITHOUT PRIOR NOTICE.

REV.	ECN	DATE	INITIAL RELEASE	CD	CHG BY	APPD BY
A	5542	03/10/05				

Created on AUTOCAD		DIMENSIONING AND TOLERANCE PER ANSI Y14.5M-1992 UNLESS OTHERWISE SPECIFIED. DIMENSIONS ARE IN INCHES (MM).	
IN ACCEPTING OUR DRAWINGS, BLUEPRINTS, OR SUPPORTING DOCUMENTATION FOR QUOTATION OR OTHER PURPOSES, YOU AGREE NOT TO DISCLOSE TO OTHERS THE DESIGN OR INVENTION OF THE DESIGNS SHOWN HEREIN, AND THAT YOU WILL MAKE NO USE OF SAME WITHOUT PERMISSION.		TOLERANCES XX = ±.01 (Z37) XXX = ±.0025 (G63S) ANGLE TOL .31°	
PROJECT REFERENCE:		MATERIAL:	
DRAWN BY: C. DUSSAULT 03/10/05		CHECKED BY:	
APPROVED BY:		APPROVED BY:	
TITLE: ASSEMBLY, BOXED, ADHESIVE CONNECTOR ST MULTIMODE-12PACK		HUBBELL Hubbell Premise Wiring HUBBELL INCORPORATED (Delaware) 14 Lord's Hill Road, Stoughton, Connecticut 06378	
SCALE: NTS		SIZE DRAWING NO. D HWS12180C	
SHEET 1 OF 1		REV. A	