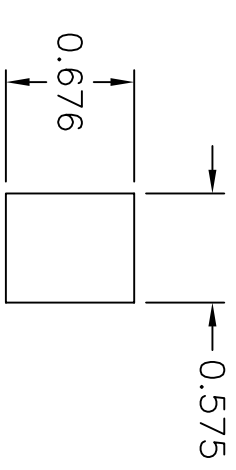
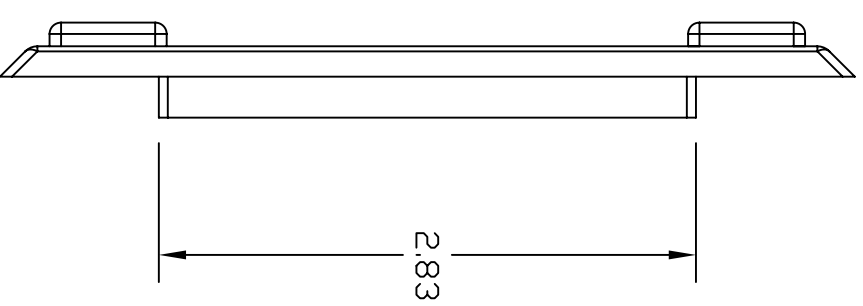
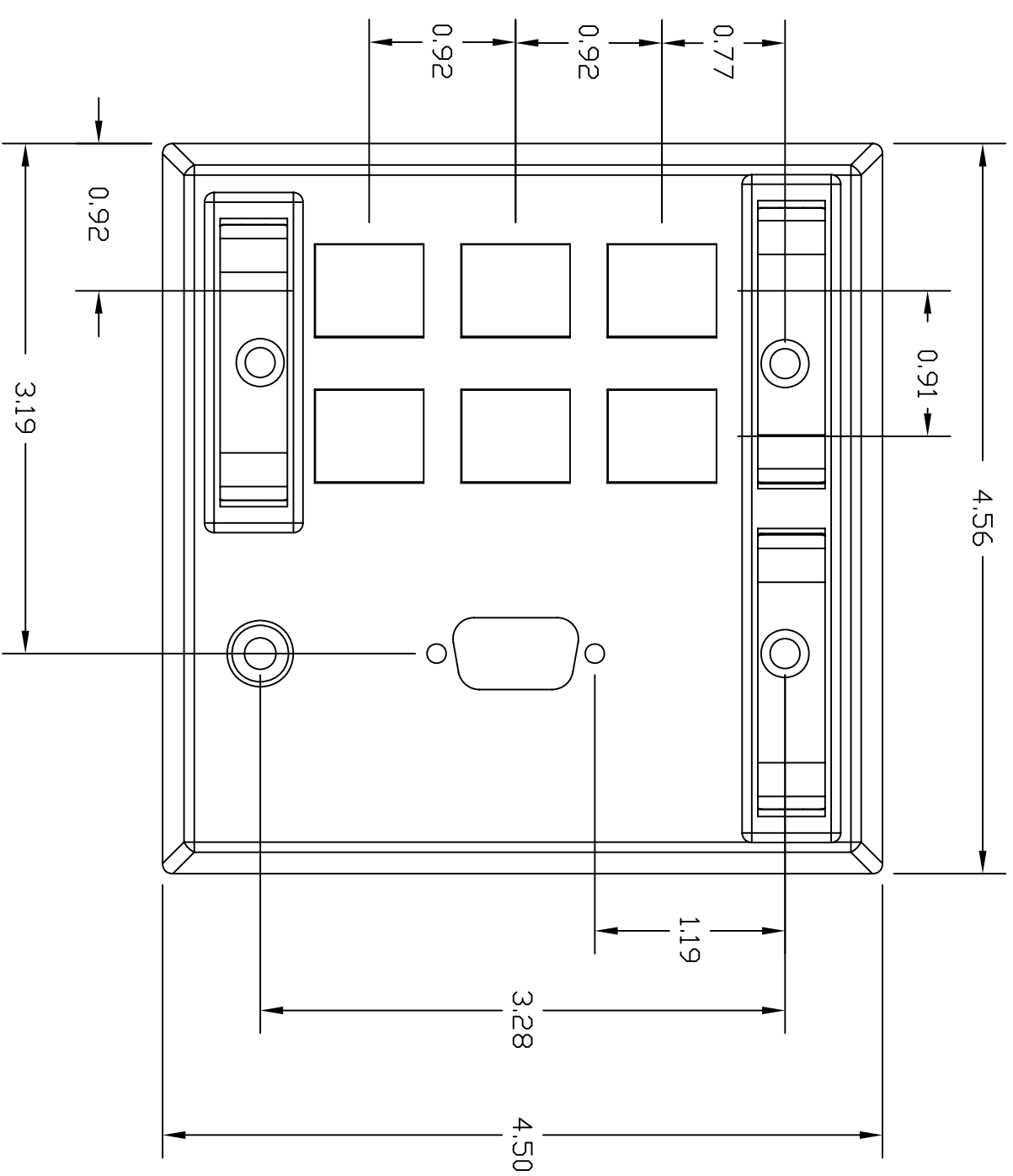
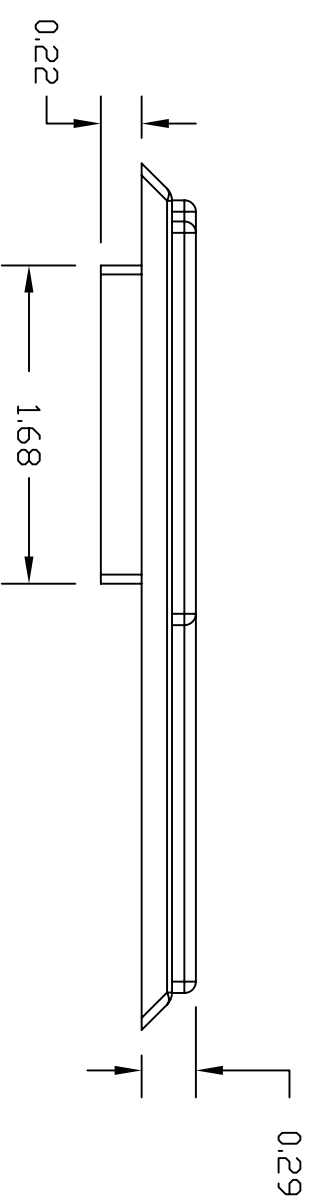


ITEM NO.	DESCRIPTION	QTY.
1	STAINLESS STEEL FACEPLATE	1
2	LABEL COVERS PAPER LABELS	3
3	PAPER LABELS	3
4	FACEPLATE MOUNTING SCREWS #6-32 x 3/4 L	4

CATALOG NUMBER	DESCRIPTION
SSF126HD15	STAINLESS STEEL FACEPLATE, 6-PORT, SVGA, LABELS



KEYSTONE OPENING



NOTES

1. SPECIFICATIONS SUBJECT TO CHANGE WITHOUT NOTICE

REV.	ECN	DATE	DESCRIPTION	CHG BY	APPD BY
B	6508	01/21/09	UPDATED BRACKET MATERIAL	NJR	
A	6008	12/7/06	INITIAL RELEASE	CG	

Created on AUTOCAD		<p>DIMENSIONING AND TOLERANCE PER ANSI Y14.5M-1982 UNLESS OTHERWISE SPECIFIED, DIMENSIONS ARE IN INCHES (MM). TOLERANCES: .XX = ±.01 (.25) .XXX = ±.005 (.127) .XXXX = ±.0025 (.0635) ANGLE TOL ±1°</p>	
<p>PROJECT REFERENCE: MATERIAL: Plate: 430 SS COIL Bracket: THERMOPLASTIC Label holder: Lexon</p>		<p>HUBBELL Hubbell Premise Wiring HUBBELL INCORPORATED (Delaware) 14 Lord's Hill Road, Storington, Connecticut 06378</p>	
<p>IN ACCEPTING OUR DRAWINGS, BLUEPRINTS, OR SUPPORTING DOCUMENTATION FOR QUOTATION OR OTHER PURPOSES, YOU AGREE NOT TO DISCLOSE TO OTHERS THE IDEAS, INFORMATION, OR DESIGNS SHOWN HEREIN, AND THAT YOU WILL MAKE NO USE OF SAME WITHOUT PERMISSION</p>		<p>TITLE: STAINLESS STEEL WALLPLATE DOUBLE GANG WITH LABEL FIELDS 6-PORT, SVGA</p>	
<p>DRAWN BY: C. GRIBBLE CHECKED BY: APPROVED BY:</p>		<p>SIZE: C DRAWING NO.: HWS12481C SCALE: 1/1 SHEET 1 OF 1</p>	