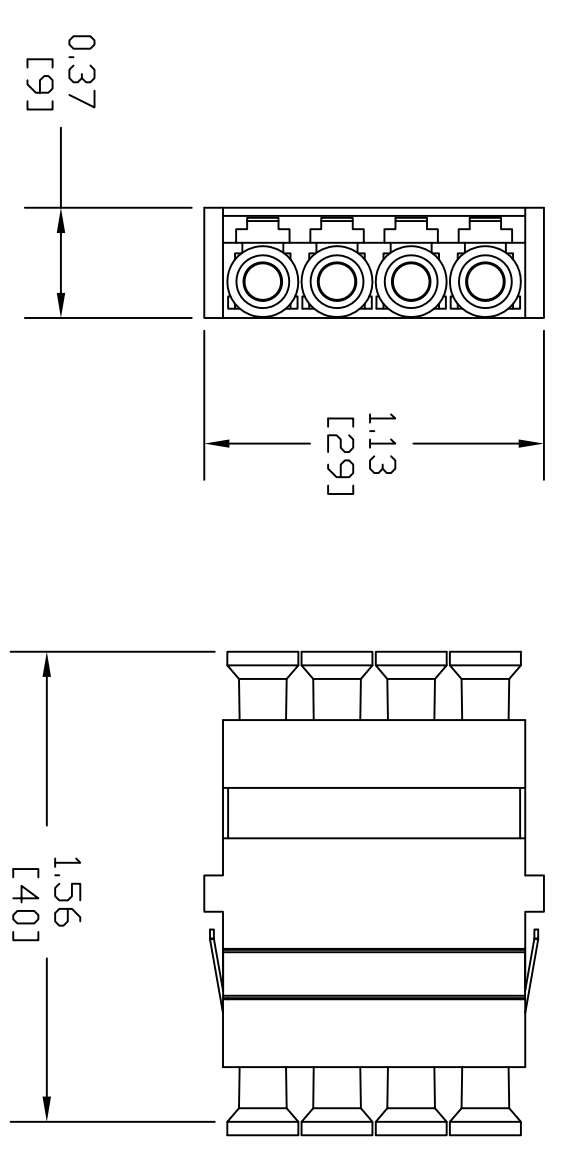
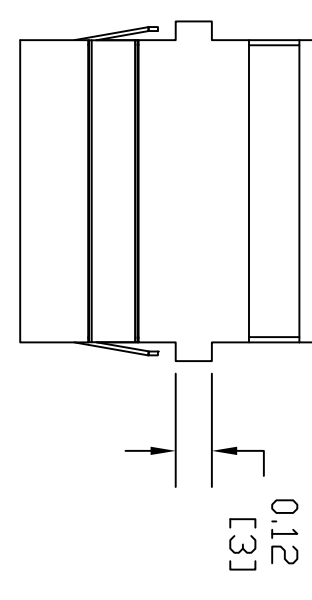
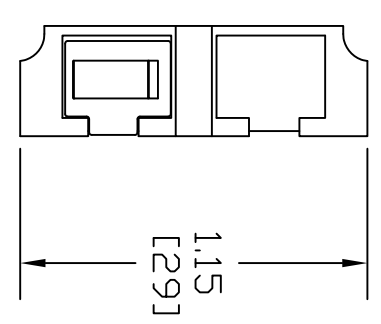
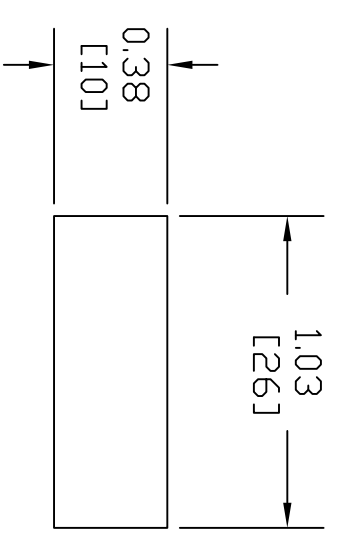
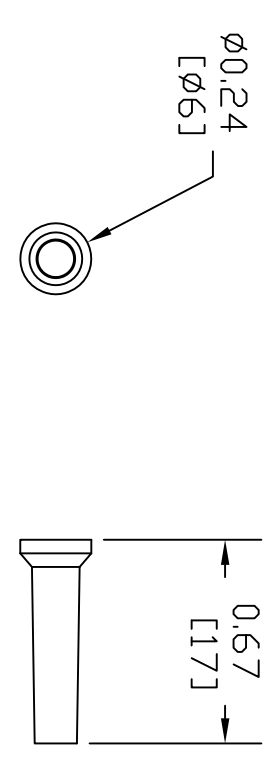
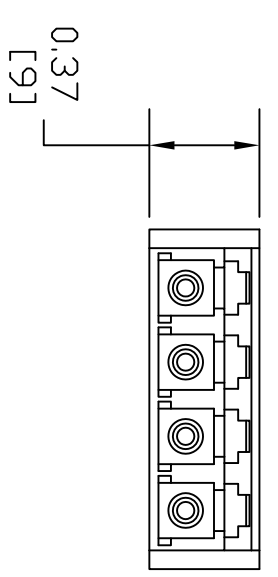


ITEM NO.	DESCRIPTION	QTY.
1	ADAPTER, LC QUAD	1
2	CLIP, PANEL MOUNT	1
3	DUST CAP, LC	8



CATALOG NUMBER	HOUSING COLOR	DESCRIPTION	SLEEVE MATERIAL
FALCQSC6Y	YELLOW	LC QUAD CLIP MOUNT ADAPTER, PC	ZIRCONIA
FALCQSC6OR	ORANGE	LC QUAD CLIP MOUNT ADAPTER, PC	ZIRCONIA
FALCQSC6B	BLUE	LC QUAD CLIP MOUNT ADAPTER, PC	ZIRCONIA
FALCQSC6R	RED	LC QUAD CLIP MOUNT ADAPTER, PC	ZIRCONIA
FALCQSC6GN	GREEN	LC QUAD CLIP MOUNT ADAPTER, PC	ZIRCONIA
FALCQSC6BK	BLACK	LC QUAD CLIP MOUNT ADAPTER, PC	ZIRCONIA
FALCQSC6BE	BEIGE	LC QUAD CLIP MOUNT ADAPTER, PC	ZIRCONIA
FALCQSC6AQ	AQUA	LC QUAD CLIP MOUNT ADAPTER, PC	ZIRCONIA
FALCQMC6BE	BEIGE	LC QUAD CLIP MOUNT ADAPTER	PHOS BRONZE
FALCQMC6B	BLUE	LC QUAD CLIP MOUNT ADAPTER	PHOS BRONZE
FALCQMC6OR	ORANGE	LC QUAD CLIP MOUNT ADAPTER	PHOS BRONZE
FALCQMC6BK	BLACK	LC QUAD CLIP MOUNT ADAPTER	PHOS BRONZE
FALCQMC6R	RED	LC QUAD CLIP MOUNT ADAPTER	PHOS BRONZE
FALCQMC6AQ	AQUA	LC QUAD CLIP MOUNT ADAPTER	PHOS BRONZE
FALCQMC6Y	YELLOW	LC QUAD CLIP MOUNT ADAPTER	PHOS BRONZE
FALCQMC6GN	GREEN	LC QUAD CLIP MOUNT ADAPTER	PHOS BRONZE



LC QUAD ADAPTER

ADAPTER DUST CAP

**RECOMMENDED
PANEL CUTOUT
PANEL THICKNESS .067" MAX**

NOTES:

- ADAPTERS SUPPLIED WITH MOUNTING CLIP AND DUST CAPS INSTALLED.
- ADAPTER MATERIAL IS UL-V0 ENGINEERING THERMOPLASTIC.
- MOUNTING CLIP MATERIAL IS STAINLESS STEEL.
- SPLIT SLEEVE MATERIAL – SEE TABLE ZIRCONIA COMPATIBLE WITH BOTH MULTIMODE AND SINGLEMODE FIBER. PHOSPHOR BRONZE COMPATIBLE WITH MULTIMODE FIBER ONLY.
- SPECIFICATIONS SUBJECT TO CHANGE WITHOUT NOTICE.

REV.	ECN	DATE	DESCRIPTION	CHG. BY	APPD. BY
E	17152	10/17/11	UPDATED/ADDED CATALOGS	CG	

Created on AUTOCAD

DIMENSIONING AND TOLERANCE PER ANSI Y14.5M-1982 UNLESS OTHERWISE SPECIFIED. DIMENSIONS ARE IN INCHES (MM).
TOLERANCES
.XX = ±.01 (.25)
.XXX = ±.005 (.127)
.XXXX = ±.0025 (.0635)
ANGLE TOL. ±1°

IN ACCEPTING OUR DRAWINGS, BLUEPRINTS, OR SUPPORTING DOCUMENTATION FOR QUOTATION OR OTHER PURPOSES, YOU AGREE NOT TO DISCLOSE TO OTHERS THE IDEAS, INFORMATION, OR DESIGNS SHOWN HEREIN, AND THAT YOU WILL MAKE NO USE OF SAME WITHOUT PERMISSION

PROJECT REFERENCE: **070-07**

MATERIAL: SEE NOTES

DRAWN BY: C. DUSSAULT 11/20/07

CHECKED BY:

APPROVED BY:

HUBBELL
Hubbell Premise Wiring
HUBBELL INCORPORATED (Delaware)
14 Lord's Hill Road, Stonington, Connecticut 06378

TITLE: **FIBER ADAPTER
LC QUAD - CLIP MOUNT**

SIZE: **C** DRAWING NO.: **HW512626C**

SCALE: **1/1** SHEET **1** OF **1**

REV. **E**