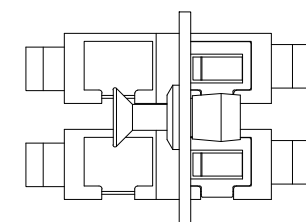
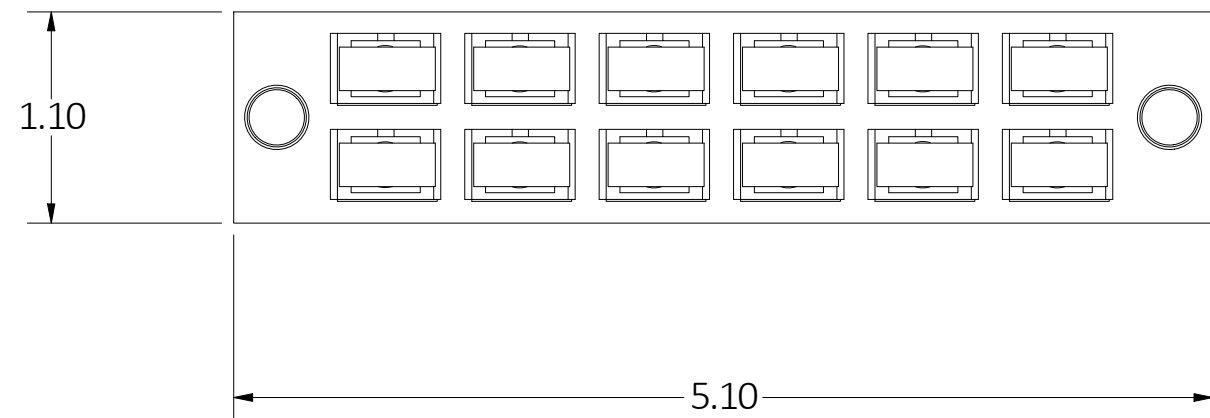
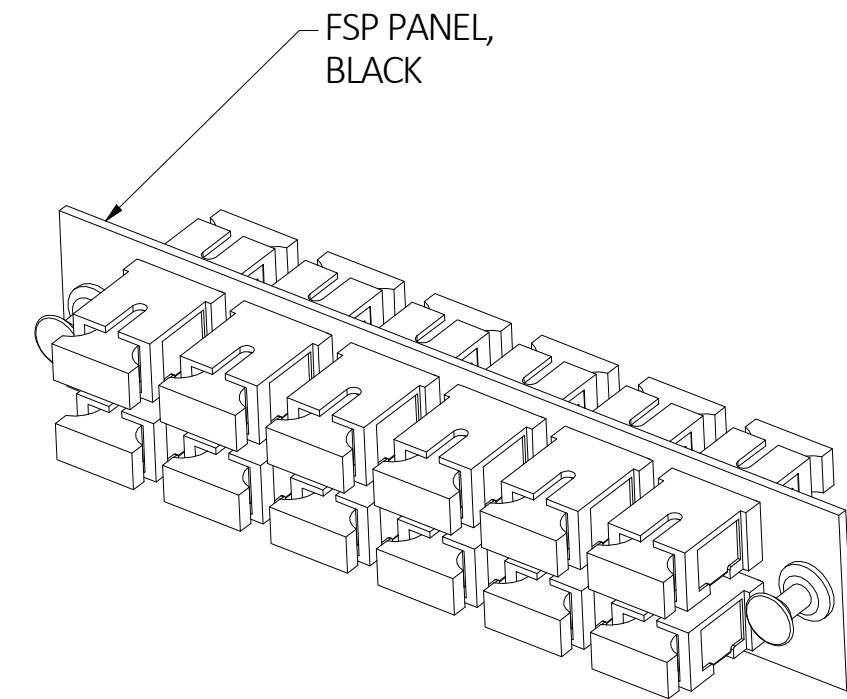
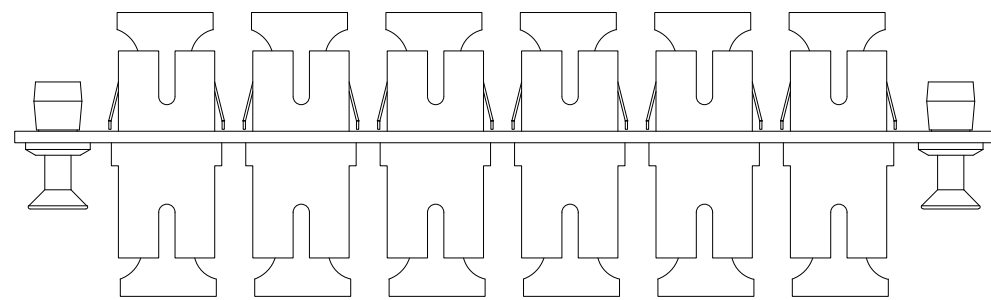


CATALOG NUMBER	DESCRIPTION	ADAPTER COLOR
FSPNSCSS12	FIBER, ADAPT PNL, 12P, 12SC SMPLX, ZIRC, BL	BLUE
FSPNSCA12	FIBER, ADPT PNL, 12P, 12SCA SMPLX, ZIRC, GN	GREEN
FSPNSC12X	FIBER, ADAPT PNL, 12P, 12SC SMPLX, UNLD	N/A



NOTES:

- PANEL MATERIAL: COLD ROLLED STEEL, BLACK POWDER COAT
- SPECIFICATIONS SUBJECT TO CHANGE WITHOUT NOTICE.

REV.	ECN	DATE	DESCRIPTION	CHG BY	APPD BY
1	210121004122	1/21/21	INITIAL RELEASE	DPO	MMA

Created on INVENTOR	<p>DIMENSIONING AND TOLERANCE PER ANSI Y14.5M-1982 UNLESS OTHERWISE SPECIFIED, DIMENSIONS ARE IN INCHES (MM). TOLERANCES.XX = ±.01 (.25) .XXX = ±.005 (.127) .XXXX = ±.0025 (.0635) ANGLE TOL ±1°</p>	<p>PROJECT REFERENCE: NPD-03368</p>
	<p>IN ACCEPTING OUR DRAWINGS, BLUEPRINTS, OR SUPPORTING DOCUMENTATION FOR QUOTATION OR OTHER PURPOSES, YOU AGREE NOT TO DISCLOSE TO OTHERS THE IDEAS, INFORMATION, OR DESIGNS SHOWN HEREIN, AND THAT YOU WILL MAKE NO USE OF SAME WITHOUT PERMISSION</p>	<p>MATERIAL: SEE NOTES</p>
	<p>DRAWN BY: D.OCONNOR 1/21/21</p>	<p>HUBBELL Hubbell Premise Wiring HUBBELL INCORPORATED (Delaware) 23 CLARA DRIVE, SUITE 103 MYSTIC, CT 06355</p>
	<p>CHECKED BY:</p>	<p>TITLE: FIBER ADAPTER PANEL 12-PORT, SC SIMPLEX ADAPTERS</p>
<p>APPROVED BY:</p>	<p>SIZE: C DRAWING NO.: HWS14974C SCALE: N/A</p>	<p>REV.: 1 SHEET 1 OF 1</p>

<p>PROJECT REFERENCE: NPD-03368</p>	<p>HUBBELL Hubbell Premise Wiring HUBBELL INCORPORATED (Delaware) 23 CLARA DRIVE, SUITE 103 MYSTIC, CT 06355</p>
<p>MATERIAL: SEE NOTES</p>	<p>TITLE: FIBER ADAPTER PANEL 12-PORT, SC SIMPLEX ADAPTERS</p>
<p>DRAWN BY: D.OCONNOR 1/21/21</p>	<p>SIZE: C DRAWING NO.: HWS14974C SCALE: N/A</p>
<p>CHECKED BY:</p>	<p>REV.: 1 SHEET 1 OF 1</p>
<p>APPROVED BY:</p>	<p>SCALE: N/A SHEET 1 OF 1</p>