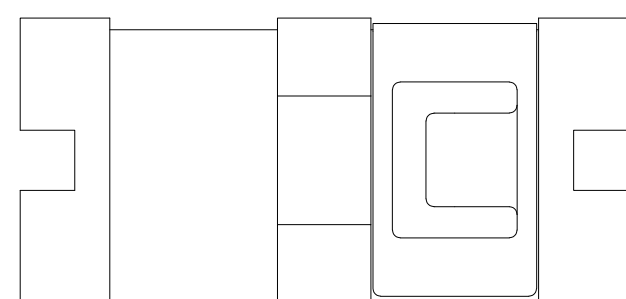
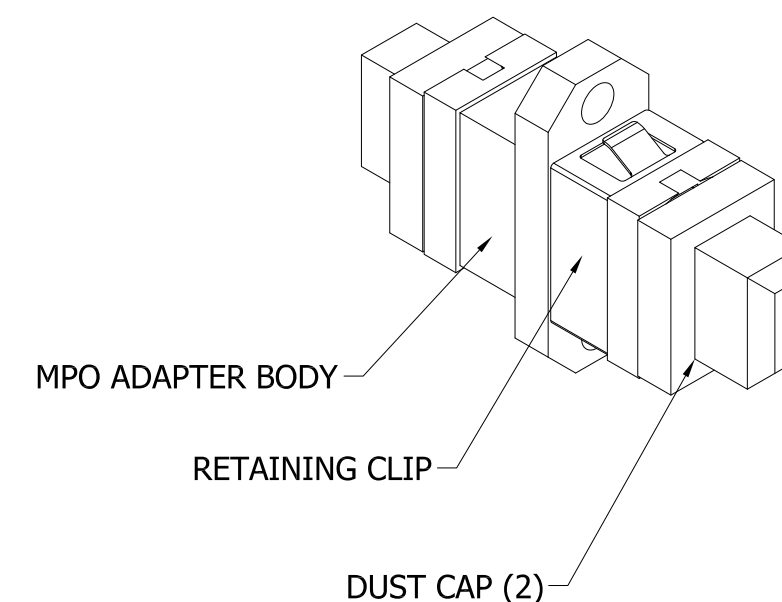
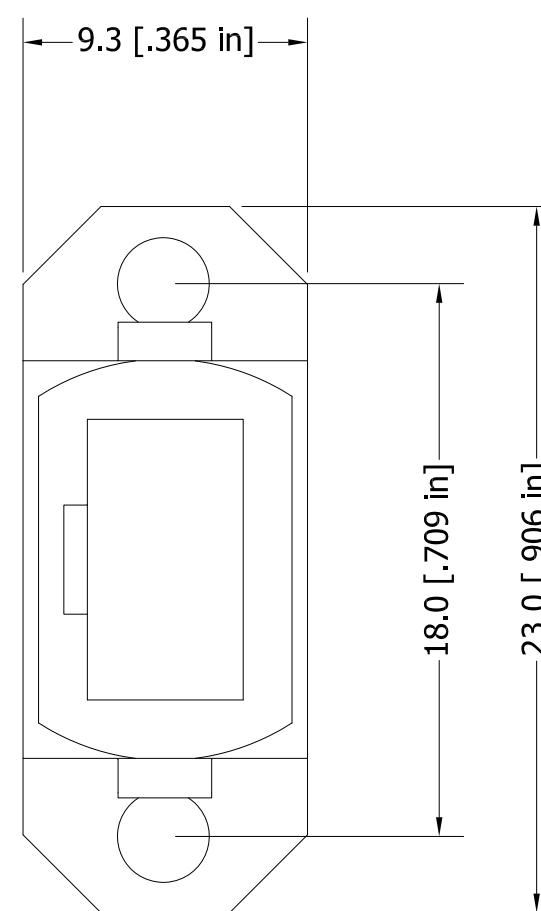
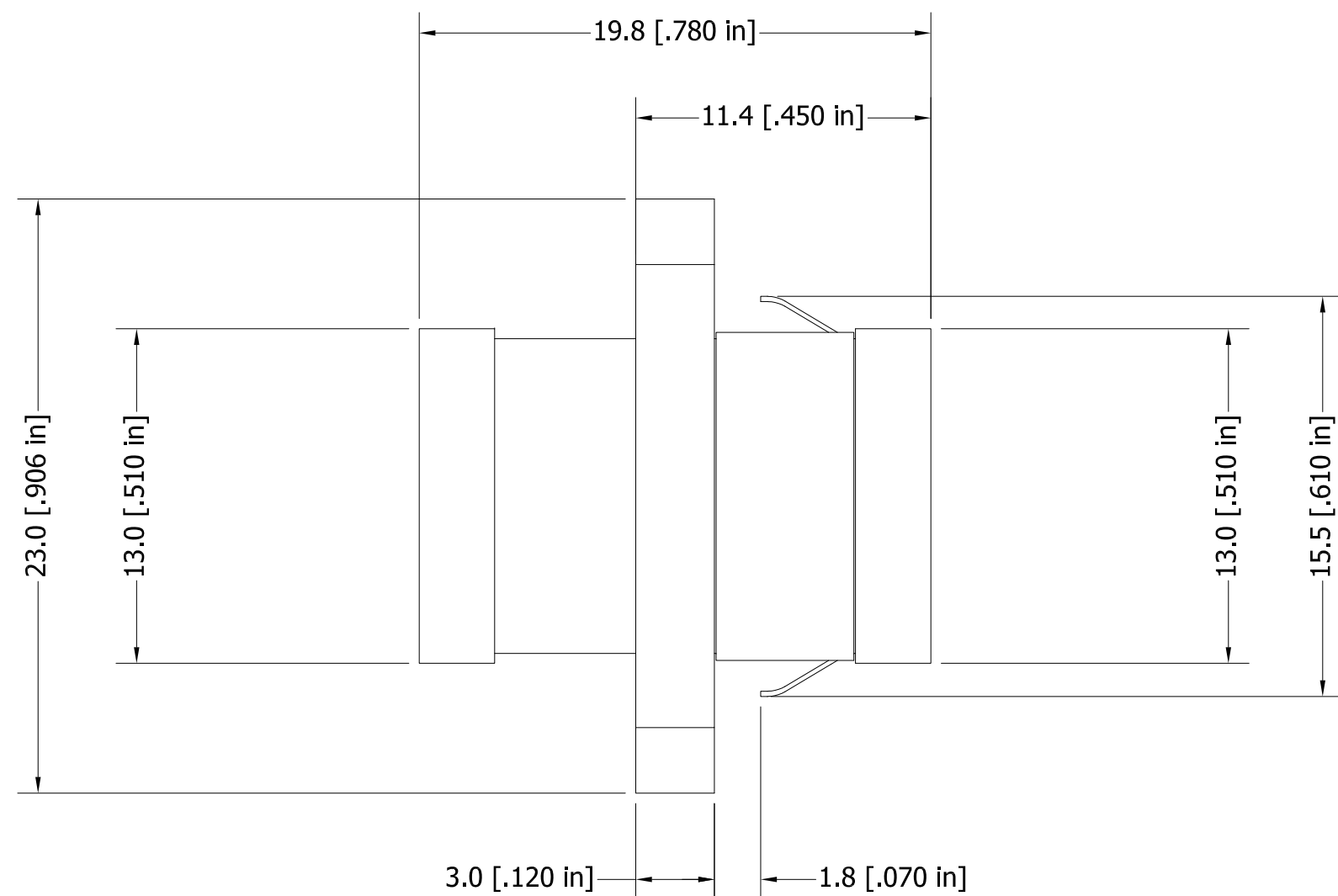
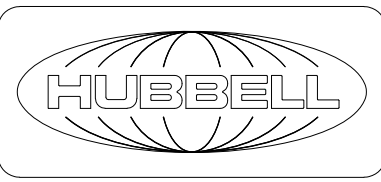


CATALOG NUMBER	COLOR
FANMTPSAQ	AQUA
FANMTPSBE	BEIGE
FANMTPSBK	BLACK
FANMTPSGN	GREEN
FANMTPSGY	GRAY
FANMTPSVI	VIOLET



- NOTES:
1. RETAINING CLIP IS MADE OUT OF STAINLESS STEEL; ADAPTER OUT OF ENGINEERED PLASTIC.
  2. PRODUCT SHIPS WITH DUST CAPS INSTALLED.
  3. SPECIFICATIONS SUBJECT TO CHANGE WITHOUT NOTICE.

REV	ECN	DATE	DESCRIPTION	CHG BY	APPD BY
1	210202004508	2/1/21	INITIAL RELEASE	DPO	MMA

Created on INVENTOR	DIMENSIONING AND TOLERANCE PER ANSI Y14.5M-1982 UNLESS OTHERWISE SPECIFIED, DIMENSIONS ARE IN INCHES (MM). TOLERANCES: XX = ±.01 (.25) .XXX = ±.005 (.127) .XXXX = ±.0025 (.0635) ANGLE TOL ±1°		PROJECT REFERENCE: <b>NPD-03368</b>		 <b>Hubbell Premise Wiring</b> HUBBELL INCORPORATED (Delaware) 23 Clara Drive, Mystic, Connecticut 06355		
	IN ACCEPTING OUR DRAWINGS, BLUEPRINTS, OR SUPPORTING DOCUMENTATION FOR QUOTATION OR OTHER PURPOSES, YOU AGREE NOT TO DISCLOSE TO OTHERS THE IDEAS, INFORMATION, OR DESIGNS SHOWN HEREIN, AND THAT YOU WILL MAKE NO USE OF SAME WITHOUT PERMISSION		MATERIAL: <b>SEE NOTES</b>			TITLE: <b>MPO ADAPTER, SCREW MOUNT, SC SIMPLEX</b>	
			DRAWN BY: <b>D.O'CONNOR 2/1/21</b>		SIZE: <b>C</b>	DRAWING NO.: <b>HWS15001C</b>	REV.: <b>1</b>
			CHECKED BY: _____		SCALE: <b>NTS</b>		SHEET <b>1</b> OF <b>1</b>
		APPROVED BY: _____					