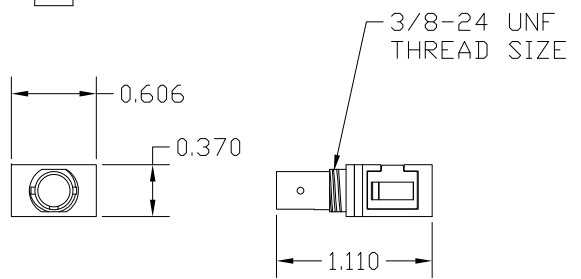
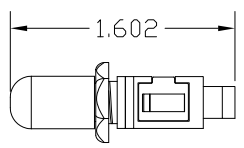
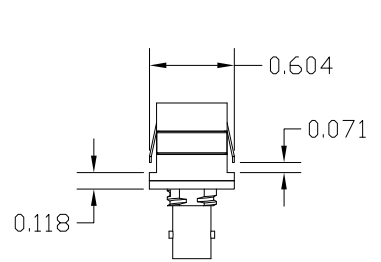
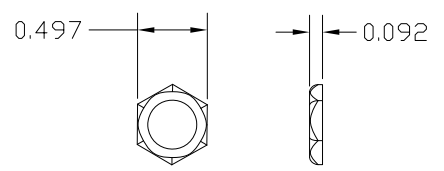


ITEM NO.	DESCRIPTION	QTY.
1	DUST CAP, SC CONNECTOR	12
2	SC TO SC ZIRCONIA HOUSING	12
3	ST ADAPTER NUT	12
4	ST ADAPTER DUST CAP	12

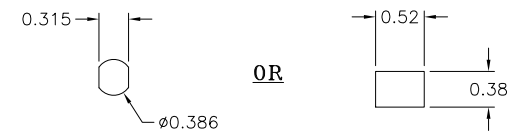
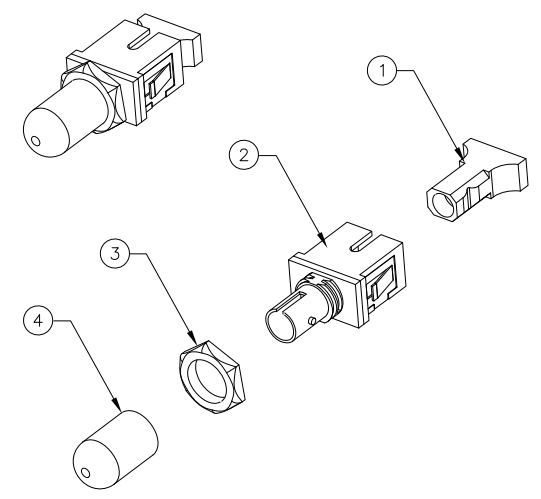
CATALOG NUMBER	HOUSING COLOR	DESCRIPTION	SPLIT SLEEVE MATERIAL
FANSTSCSSC12	BLUE	ADAPTER, SC TO ST, CLIP MOUNT	ZIRCONIA



ADAPTER



NUT




**RECOMMENDED
PANEL CUTOUTS**

NOTES:

- ADAPTERS SUPPLIED WITH DUST CAPS INSTALLED AND HARDWARE BAGGED SEPARATELY. BOX OF 12.
- ADAPTER MATERIAL IS ENGINEERING GRADE THERMOPLASTIC, UL94 RATING OF V-1 OR BETTER.
- SC ADAPTER SIDE MOUNTING CLIPS ARE STAINLESS STEEL.
- ST NUT IS MACHINED BRASS, NICKEL PLATED.
- ALIGNMENT SLEEVE MATERIAL - SEE TABLE ZIRCONIA COMPATIBLE WITH BOTH SINGLEMODE AND MULTIMODE FIBER.
- SPECIFICATIONS SUBJECT TO CHANGE WITHOUT NOTICE.

REV.	ECN	DATE	DESCRIPTION	CHG BY	APPD BY
1	210202004508	2/1/21	INITIAL RELEASE	DPO	MMA

Created on AUTOCAD	DIMENSIONING AND TOLERANCE PER ANSI Y14.5M-1982 UNLESS OTHERWISE SPECIFIED, DIMENSIONS ARE IN INCHES (MM). TOLERANCES .XX = ±.01 (.25) .XXX = ±.005 (.127) .XXXX = ±.0025 (.0635) ANGLE TOL ±1°		PROJECT REFERENCE: NPD-03368		 Hubbell Premise Wiring HUBBELL INCORPORATED (Delaware) 23 Clara Drive, Mystic, Connecticut 06355	
	IN ACCEPTING OUR DRAWINGS, BLUEPRINTS, OR SUPPORTING DOCUMENTATION FOR QUOTATION OR OTHER PURPOSES, YOU AGREE NOT TO DISCLOSE TO OTHERS THE IDEAS, INFORMATION, OR DESIGNS SHOWN HEREIN, AND THAT YOU WILL MAKE NO USE OF SAME WITHOUT PERMISSION		MATERIAL:			
			DRAWN BY: D.O'CONNOR 2/1/21		TITLE: FIBER OPTIC ADAPTER SC/ST ZIRCONIA, MM/SM CLIP MOUNT	
			CHECKED BY:		SIZE DRAWING NO. C HWS15009C	
		APPROVED BY:		REV. 1		
		SCALE: 1/1		SHEET 1 OF 1		