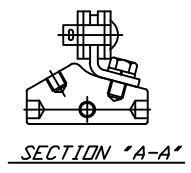
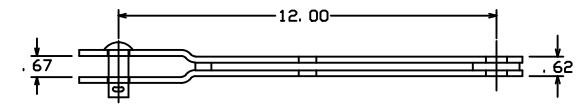
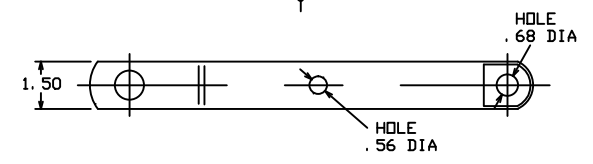
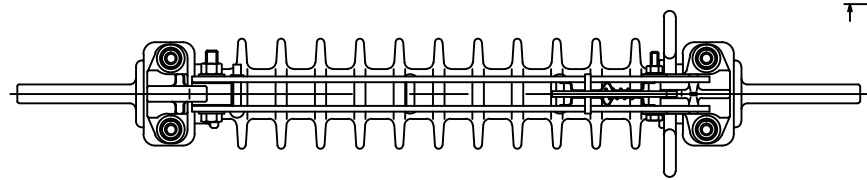
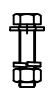


OPTION "C"
EXTENSION LINK WITH ANGLE ADAPTER

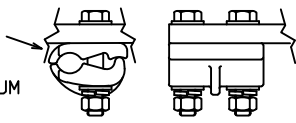


OPTION "B"
FOUR 1/2"-13 X 2" SS HH MCH TERMINAL BOLTS WITH WASHERS



OPTION "CC"
TWO EXTENSION LINKS WITH ONE ANGLE ADAPTER

OPTION "T"
TWO ATC-1343 TIN PLATED ALUMINUM PG TERMINALS



CONFIDENTIAL

This drawing and its contents are for internal use by original recipient only and are not to be distributed outside original recipient's organization without prior written consent of Hubbell Power Systems, Inc.

TYPE ALTD DISCONNECT SWITCH
CATALOG NUMBERING SYSTEM
ALTD06200R□□□

600 AMP _____ OPTIONS (ALPHETICALLY)
B- SS TERMINAL BOLTS
C- EXTENSION LINK/ADAPTER
CC- ADAPTER WITH 2 LINKS
T- TWO ATC-1343 PG TERMINALS

INSULATION
200 KV BIL POLYMER

| | | | | | |
|------------------------------|----------|--------|--------------------------------|--|---|
| 21745 | 03-28-07 | | VEAVER | CHANCE TOLERANCE CHART X ± .000 FRACTION ANGLES 30° XX ± .000 AND DRIFT (UNLESS NOTED) XXX ± .005 CASTING DIMENSIONS | HUBBELL POWER SYSTEMS SWITCH ALTD DISCONNECT |
| EC # | DATE | CHG BY | RESP ENG | | |
| DESC OF DWG FIRST RELEASE | | | AREAS AFFECTED BY LATEST EC | CONFIDENTIAL: THIS DRAWING AND ITS CONTENTS ARE CONFIDENTIAL AND THE EXCLUSIVE PROPERTY OF HUBBELL POWER SYSTEMS. NO PUBLICATION, DISTRIBUTION OR COPIES MAY BE MADE WITHOUT THE WRITTEN CONSENT OF HUBBELL POWER SYSTEMS. HUBBELL POWER SYSTEMS UNPUBLISHED ALL RIGHTS RESERVED UNDER THE COPYRIGHT LAWS. | TITLE SIZE DWG NO. D PSSAALTD06200R CAT / PART / ASSY NO. ALTD06200R REV --- DO NOT SCALE THIS DRAWING DRN BY DEW DATE 03-28-07 SHEET 01 OF 01 |
| REASON (S) FOR CHANGE: -- | | | S.P.C. - Y N | | |
| DISPOSITION OF MAT'L: -- | | | F.A.I. - X | | |
| | | | TOOL/EQUIP - X | | |
| | | | SUPPLIER - X | | |
| | | | GAUGES - X | | |
| | | | PRCS PROC - X | | |
| | | | PKG/LABEL - X | | |
| | | | INSP/TEST - X | | |

TIN PLATED ALUMINUM
TERMINAL PAD

DEADENDING HOLE

90° BLADE STOP PIN
REMOVE PIN FOR
GREATER OPENING

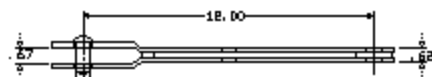
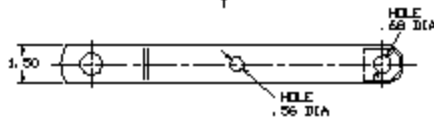
LOAD-BREAK HOOKS

EXTENSION LINK WITH
ANGLE ADAPTER

SECTION "A-A"

FOUR 1/2"-13 X 2" SS
HH NCH TERMINAL BOLTS
WITH WASHERS

TWO ATC-1343
TIN PLATED ALUMINUM
PG TERMINALS



TWO EXTENSION LINKS
WITH ONE ANGLE ADAPTER

CONFIDENTIAL

This drawing and its contents are for
internal use by original recipients only
and are not to be distributed outside
original recipient's organization without
prior written consent of Hubbell Power
Systems, Inc.

TYPE ALTD DISCONNECT SWITCH
CATALOG NUMBERING SYSTEM

ALTD06200R□□□

600 AMP

OPTIONS (ALPHABETICALLY)

B- SS TERMINAL BOLTS
D- EXTENSION LINK/ADAPTER
CO- ADAPTER WITH E LINES
T- TWO ATC-1343 PG TERMINALS

INSULATION

600 KV 3IL POLYMER

| | | | |
|----------------------|----------|--------|----------|
| 22748 | 83-05-07 | | VEAVER |
| EC 9 | DATE | CHK BY | RESP ENG |
| SIZE OF SHEET BLANK | | | |
| NUMBER OF PAGES | | | |
| DESCRIPTION OF SHEET | | | |

CHANCE
TOLERANCE CHART



HUBBELL® POWER SYSTEMS

SWITCH
ALTD DISCONNECT

SEE FIG. NO. 106 / SEE / ASN NO. 106
D PSMALTD06200R ALTD06200R

DATE 12-28-07 SHEET 01 OF 03