

CATALOG NUMBERING SYSTEM

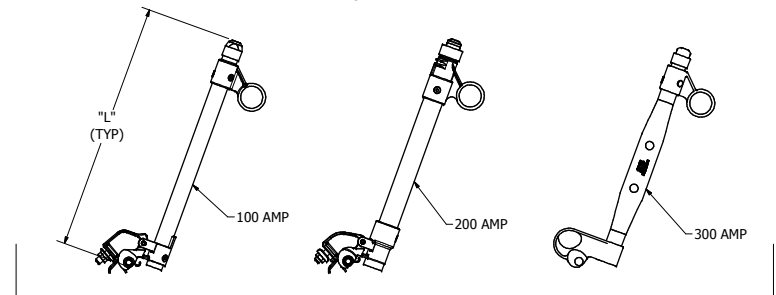
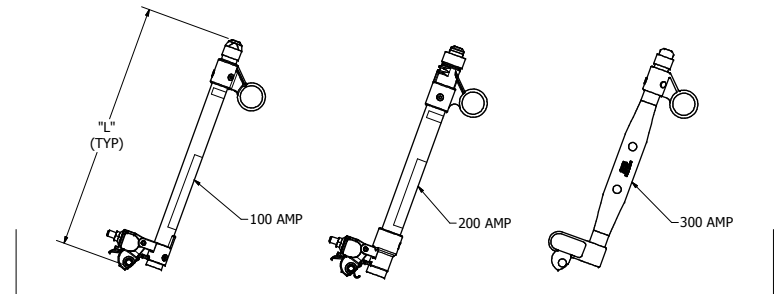
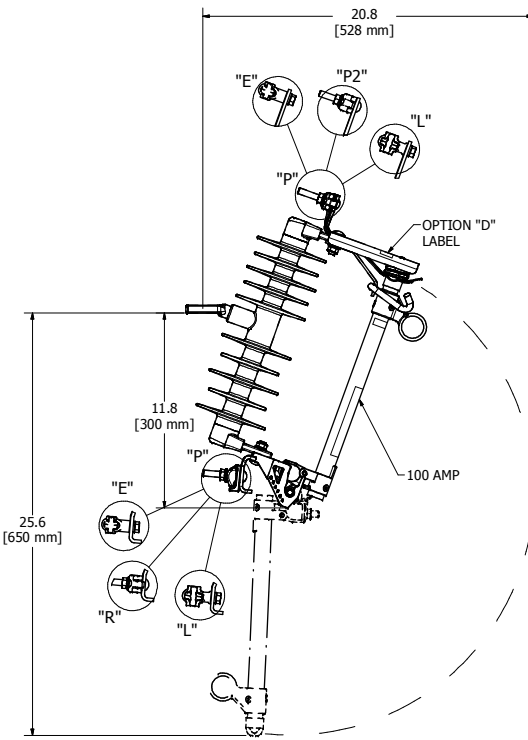
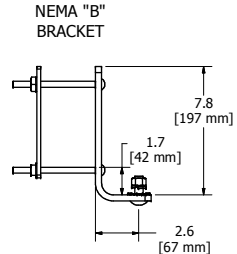
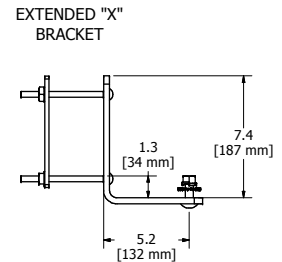
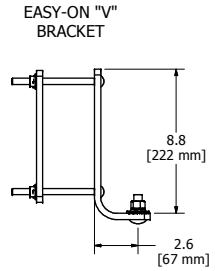
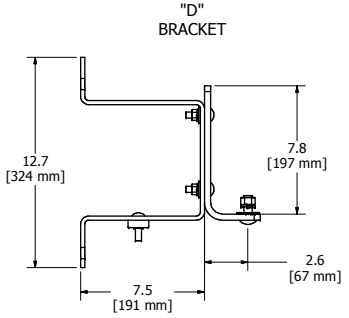
POSITION

1 2 3 4 5 6 7 8 9 10 11 12 13
CP 7 1 0 - 3
TP

POSITION 7 & 8 FUSE HOLDER					
POSITION 7 & 8	KV MAX	AMPS	AIC ASYM	"L"	ARC ROD
11	27	100	8,000	14.97 (380 MM)	NONE
13	27	100	12,000	15.06 (383 MM)	4.50 (114 MM)
42	27	200	10,000	15.06 (383 MM)	4.50 (114 MM)
43	27	200	12,000	15.06 (383 MM)	5.50 (140 MM)
33	27	300	12,000	15.06 (383 MM)	NONE
MM	-	-	-	-	-


FOR MOUNTING ONLY

- POSITION 6 - INSULATION (150KV BIL)
- POSITIONS 7 & 8 - FUSEHOLDER (SEE TABLE)
- POSITION 9 - TERMINAL
 - P - PG CLAMPS
 - P2 - PG CLAMP 2 PIECE
 - S - SMALL EYEBOLT
 - L - LARGE EYEBOLT
 - R - ROT. BOTTOM PG CLAMP
- POSITION 10 - MOUNTING BRACKET
 - BLANK OR Z - NO BRACKET
 - B - NEMA "B" BRACKET
 - C - NEMA "B" BRACKET W/ 6" BOLTS
 - X - EXTENDED BRACKET
 - D - "D" BRACKET
 - V - EASY-ON BRACKET
- POSITION 11-13 - SPECIAL OPTIONS
 - BLANK - NO OPTION
 - D - RATING LABEL
 - F - WILDLIFE PROTECTOR
 - M - MECHANICAL ASSIST FUSEHOLDER
 - K - TRUNNION W/ KEYHOLE
 - S - STAINLESS STEEL



DIMENSION ARE APPROXIMATE
AND FOR REFERENCE ONLY

 ASSIST SPRING TYPICAL
FOR 100 & 200 AMP
FUSEHOLDERS

CHANCE		 HUBBELL POWER SYSTEMS, INC.		HUBBELL POWER SYSTEMS	
EC: 70152 SR DATE: 06-27-17		TITLE		CUTOUT, 27KV 150 BIL POLYMER	
CONFIDENTIAL: THIS DRAWING AND ITS CONTENTS ARE CONFIDENTIAL AND THE EXCLUSIVE PROPERTY OF HUBBELL POWER SYSTEMS. NO PUBLICATION, DISTRIBUTION OR COPIES MAY BE MADE WITHOUT THE WRITTEN CONSENT OF HUBBELL POWER SYSTEMS. HUBBELL POWER SYSTEMS UNPUBLISHED ALL RIGHTS RESERVED UNDER THE COPYRIGHT LAWS.					
SIZE	DWG NO.	CAT / PART / ASSY NO.		REV	
D	PSSAP7103	SEE CHART		C	
DO NOT SCALE THIS DRAWING		DRN BY COCHRAN	DATE 08-21-13	SHEET 01 OF 01	