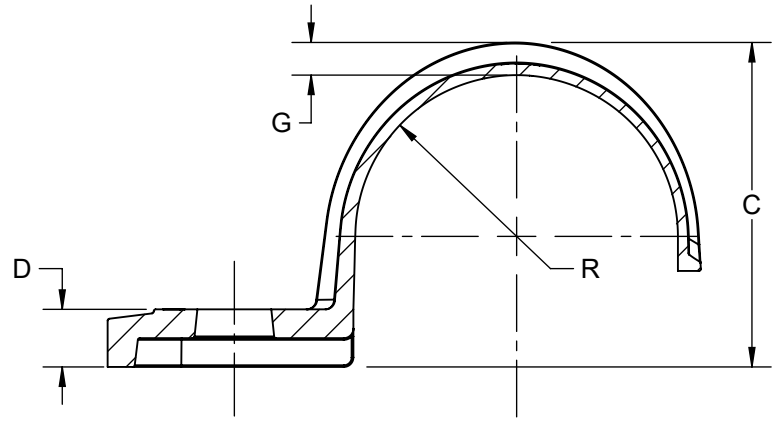
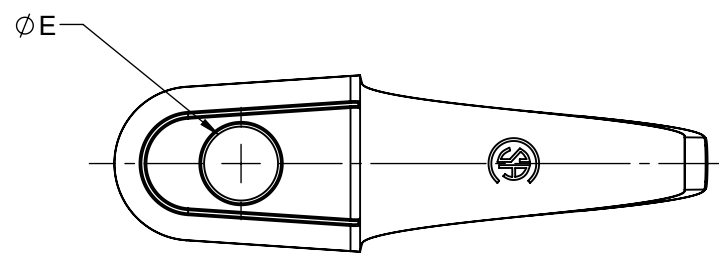
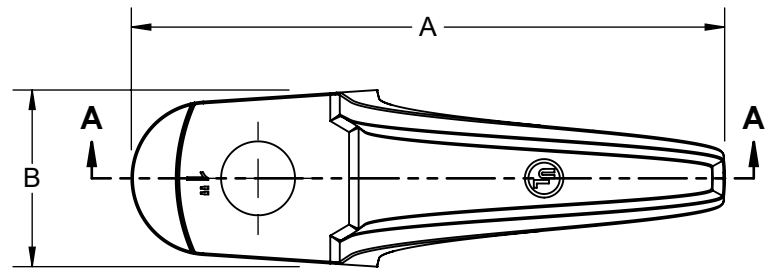


REVISIONS			
REV.	DATE	DESCRIPTION	BY:
-	12-19-23	INITIAL RELEASE OF DRAWING	VS

CAT. #	SIZE	A	B	C	D	E	R	G
1301	3/8"	1.76 [44.7]	0.68 [17.3]	0.71 [18.0]	0.22 [5.6]	0.31 [7.9]	0.34 [8.6]	0.08 [2.0]
1302	1/2"	1.96 [49.8]	0.62 [15.7]	0.94 [23.9]	0.24 [6.1]	0.28 [7.1]	0.43 [10.9]	0.15 [3.8]
1303	3/4"	2.22 [56.4]	0.75 [19.1]	0.95 [24.1]	0.24 [6.1]	0.31 [7.9]	0.53 [13.5]	0.15 [3.8]
1304	1"	3.09 [78.5]	0.80 [20.3]	1.69 [42.9]	0.30 [7.6]	0.39 [9.9]	0.84 [21.3]	0.17 [4.3]
1305	1-1/4"	3.11 [79.0]	0.82 [20.8]	1.75 [44.5]	0.30 [7.6]	0.41 [10.4]	0.83 [21.1]	0.23 [5.8]
1306	1-1/2"	3.83 [97.3]	1.10 [27.9]	2.04 [51.8]	0.38 [9.7]	0.42 [10.7]	0.95 [24.1]	0.25 [6.4]
1308	2"	4.48 [113.8]	1.40 [35.6]	2.67 [67.8]	0.40 [10.2]	0.56 [14.2]	1.19 [30.2]	0.27 [6.9]
1310	2-1/2"	5.32 [135.1]	1.40 [35.6]	3.29 [83.6]	0.68 [17.3]	0.55 [14.0]	1.44 [36.6]	0.29 [7.4]
1312	3"	6.63 [168.4]	1.53 [38.9]	3.73 [94.7]	0.68 [17.3]	0.56 [14.2]	1.75 [44.5]	0.40 [10.2]
1314	3-1/2"	7.71 [195.8]	1.98 [50.3]	4.31 [109.5]	0.52 [13.2]	0.70 [17.8]	2.00 [50.8]	0.42 [10.7]
1316	4"	8.14 [206.8]	2.00 [50.8]	4.96 [126.0]	0.70 [17.8]	0.75 [19.1]	2.25 [57.2]	0.50 [12.7]



SECTION A-A

STRAP	MALLEABLE IRON	ZINC
	MATERIAL	FINISH
LIST OF PARTS		
THE DESIGN AND DIMENSIONS OF THE PRODUCT SHOWN ON THIS DRAWING ARE SUBJECT TO CHANGE WITHOUT NOTICE		
TITLE: ONE HOLE STRAP FOR RIGID CONDUIT-MALLEABLE IRON 0.375 to 4.00 CUS		
TOLERANCE UNLESS OTHERWISE SPECIFIED .XX DECIMAL ±.015 .XXX DECIMAL ±.005 ANGLE ±2°		
	DRAWN BY: VS	SCALE: 1:1
	APP. BY: N.S.	DATE: 12-19-23

NOTES:
 1. ALL DIMENSIONS ARE IN INCHES AND [MILLIMETERS].
 2. CSA & UL LISTED.