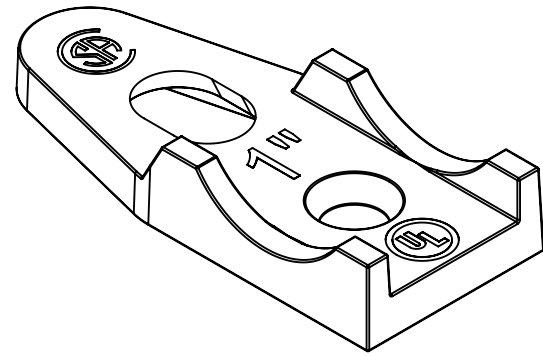
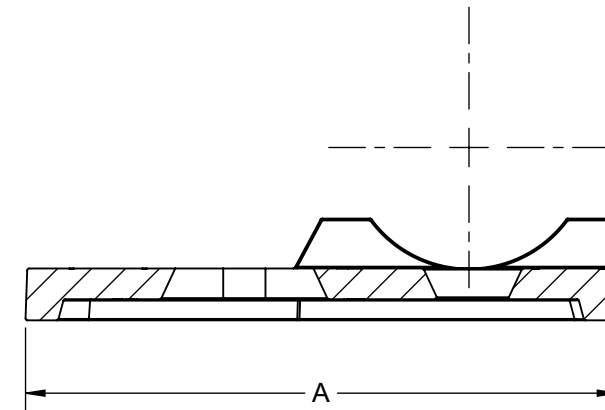


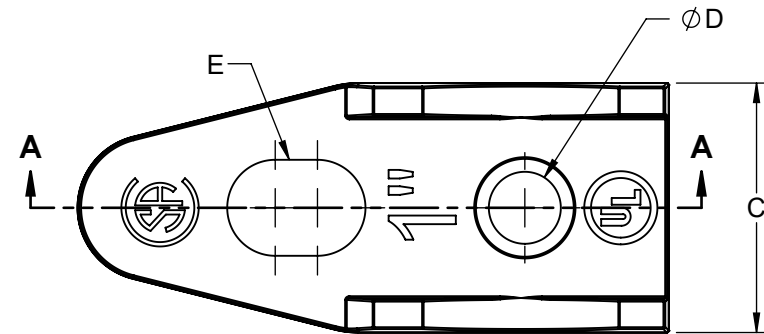
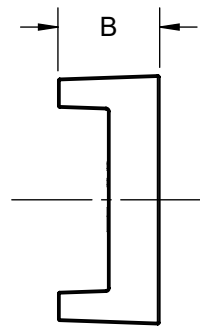
CAT. #	SIZE	A	B	C	D	E
1342	1/2"	2.35 [59.7]	0.43 [10.9]	1.07 [27.2]	0.36 [9.1]	0.58 X 0.36 [14.7 X 9.1]
1343	3/4"	2.50 [63.5]	0.47 [11.9]	1.20 [30.5]	0.45 [11.4]	0.65 X 0.41 [16.5 X 10.4]
1344	1"	3.08 [78.2]	0.53 [13.5]	1.30 [33.0]	0.38 [9.7]	0.72 X 0.50 [18.3 X 12.7]
1345	1-1/4"	3.58 [90.9]	0.57 [14.5]	1.62 [41.1]	0.59 [15.0]	0.75 X 0.50 [19.1 X 12.7]
1346	1-1/2"	3.95 [100.3]	0.61 [15.5]	1.66 [42.2]	0.56 [14.2]	0.95 X 0.58 [24.1 X 14.7]
1348	2"	4.83 [122.7]	0.97 [24.6]	2.00 [50.8]	0.56 [14.2]	0.90 X 0.64 [22.9 X 16.3]
1347	2-1/2"	5.50 [139.7]	0.81 [20.6]	2.54 [64.5]	0.58 [14.7]	1.26 X 0.60 [32.0 X 15.2]
1349	3"	6.77 [172.0]	0.89 [22.6]	2.70 [68.6]	0.61 [15.5]	1.21 X 0.60 [30.7 X 15.2]
1350	3-1/2"	7.47 [189.7]	1.09 [27.7]	2.95 [74.9]	0.59 [15.0]	1.45 X 0.75 [36.8 X 19.1]
1351	4"	8.12 [206.2]	1.14 [29.0]	3.53 [89.7]	0.52 [13.2]	1.36 X 0.95 [34.5 X 24.1]



**ISOMETRIC VIEW**



**SECTION A-A**



REVISIONS			
REV.	DATE	DESCRIPTION	BY:
-	12-18-23	INITIAL RELEASE OF DRAWING	MS

FILE NO. :  
**CLAMP BACK FOR RIGID CONDUIT-MALLEABLE IRON 0.50 to 4.00 CUS**

DIMENSION SHEET FOR CAT. NO.  
**SEE CHART**

CLAMP	MALLEABLE IRON	ZINC
DESCRIPTION	MATERIAL	FINISH

**LIST OF PARTS**

THE DESIGN AND DIMENSIONS OF THE PRODUCT SHOWN ON THIS DRAWING ARE SUBJECT TO CHANGE WITHOUT NOTICE

TITLE:  
**CLAMP BACK FOR RIGID CONDUIT-MALLEABLE IRON 0.50 to 4.00 CUS**

TOLERANCE UNLESS OTHERWISE SPECIFIED  
.XX DECIMAL ±.015  
.XXX DECIMAL ±.005  
ANGLE ±2°



DRAWN BY:	MS	SCALE:	SIZE:
APP. BY:	N.S.		
DATE:	12-18-23	1:1	<b>B</b>

**NOTES:**

- ALL DIMENSIONS ARE IN INCHES AND [MILLIMETERS].
- CSA & UL LISTED.

1 1/4" x 1 1/4" x 1 1/4"