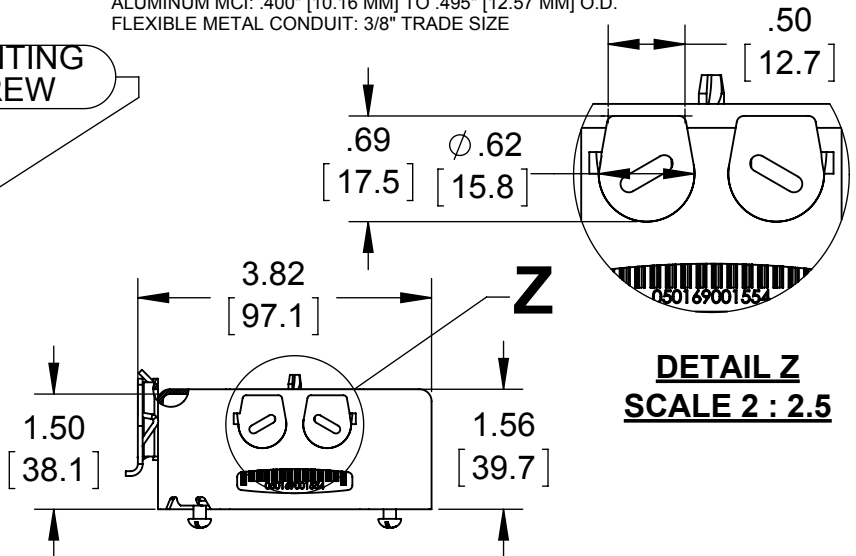
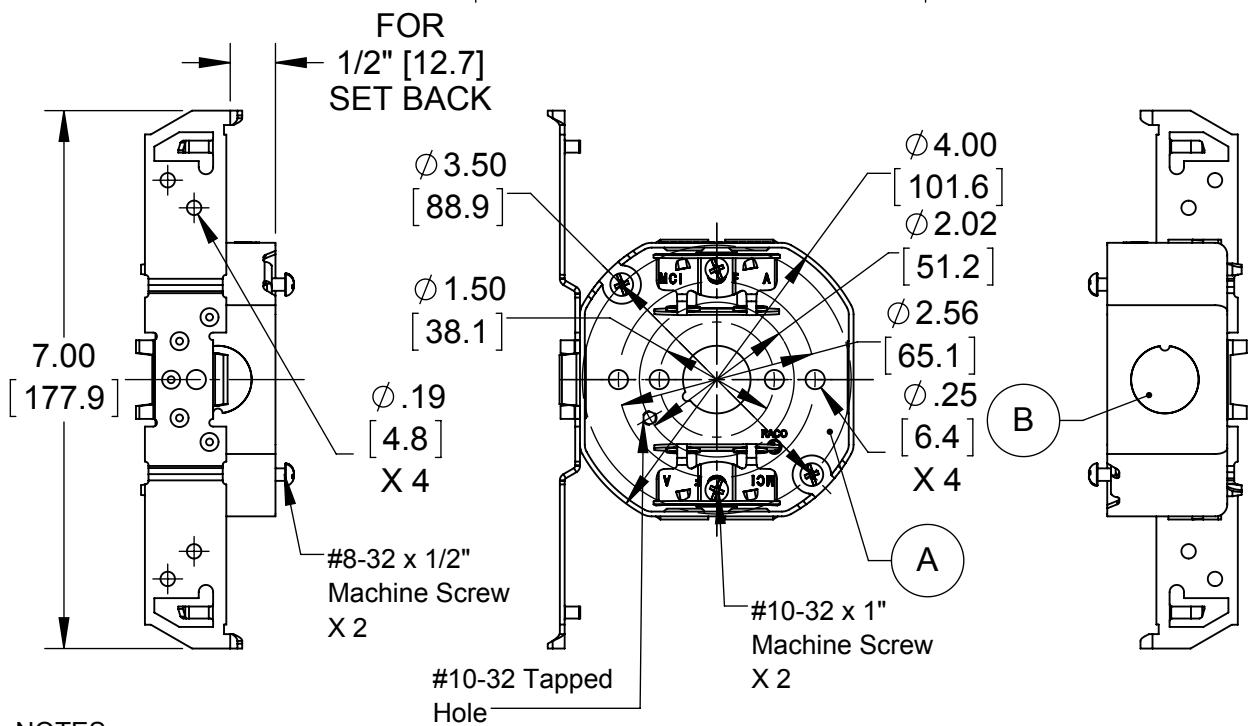


X CLAMP ACCEPTS ALL OF THE FOLLOWING WIRE TYPES:
 STEEL & ALUMINUM BX: .444" [11.27 MM] O.D. TO LARGEST THAT WILL FIT IN CLAMP
 STEEL MCI: .425" [10.79 MM] TO .600" [15.24 MM] O.D.
 ALUMINUM MCI: .400" [10.16 MM] TO .495" [12.57 MM] O.D.
 FLEXIBLE METAL CONDUIT: 3/8" TRADE SIZE



DETAIL Z
SCALE 2 : 2.5



- NOTES:**
1. ALL DIMENSIONS ARE IN INCHES AND [MILLIMETERS]
 2. BOX VOLUME: 15.5 IN³ [254.0 CM³]
 3. ACCEPTS CEILING FIXTURES UP TO 50LBS [22.67 KG].
 4. UL LISTED

| KNOCKOUTS | | |
|------------|----------|------|
| TRADE SIZE | LOCATION | QTY. |
| 1/2" KO | A,B | 1 |

LIST OF PARTS

| DESCRIPTION | MATERIAL | FINISH |
|----------------|----------|------------|
| BOX | STEEL | GALVANIZED |
| MOUNTING SCREW | STEEL | GALVANIZED |
| TS BRACKET | STEEL | GALVANIZED |
| X CLAMP | STEEL | GALVANIZED |
| CLAMP SCREW | STEEL | GALVANIZED |

| INITIAL RELEASE | N.S. | 02/26/2016 |
|-----------------|----------------------|------------|
| SYM. | REVISION DESCRIPTION | APP DATE |
| | | |

THE DESIGN AND DIMENSIONS OF THE PRODUCT SHOWN ON THIS DRAWING ARE SUBJECT TO CHANGE WITHOUT NOTICE

TITLE:
4" OCTAGON BOX 1-1/2" DEEP WITH X CLAMPS & TS BRACKET

TOLERANCE UNLESS OTHERWISE SPECIFIED
 .XX DECIMAL ±.015
 .XXX DECIMAL ±.005
 ANGLE ±2°

RACO
 South Bend, Indiana

| | | |
|-----------|------------|--------|
| DRAWN BY: | J.R. | SCALE: |
| APP. BY: | N.S. | 1:2.5 |
| DATE: | 02/26/2016 | |

155 CUS

155 DIMENSION SHEET FOR CAT. NO.

SIZE: **A**