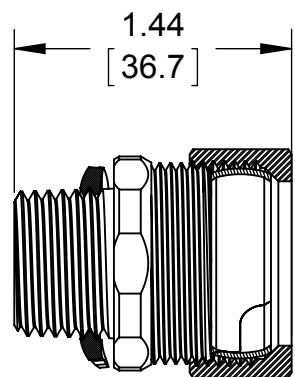
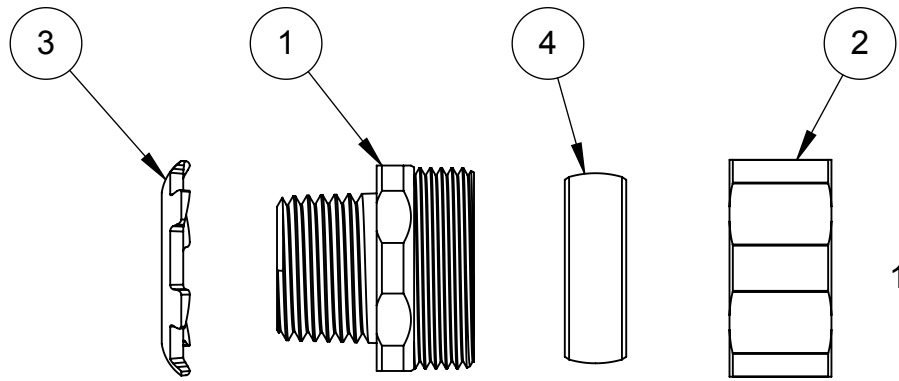
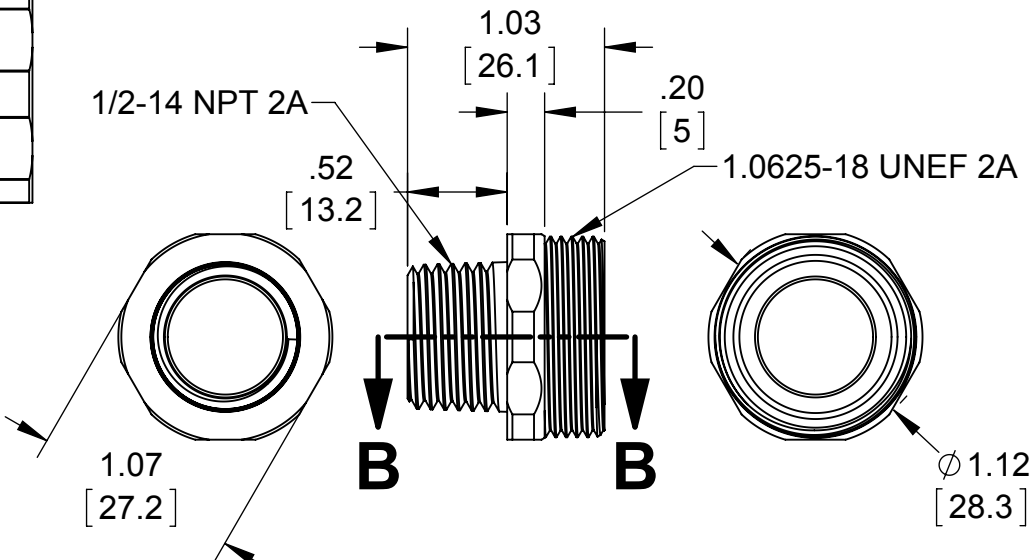
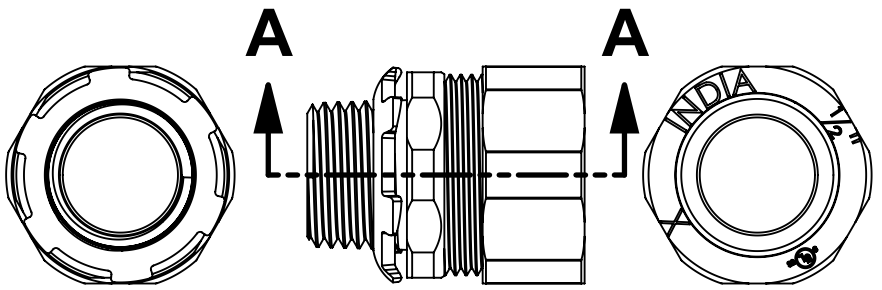


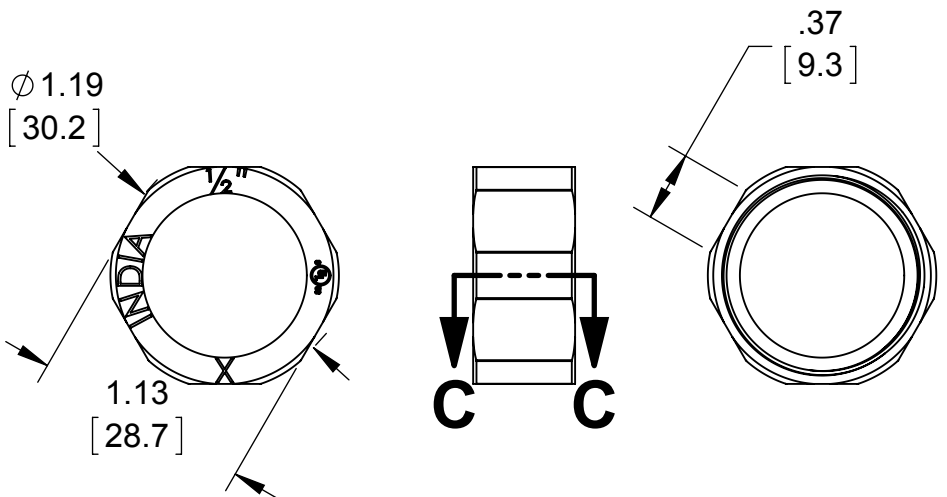
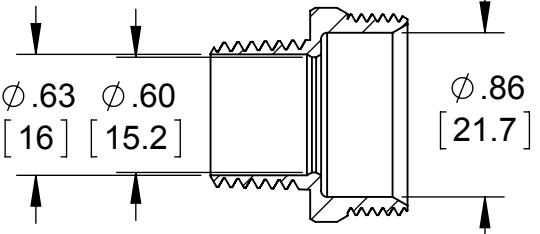
ITEM NO.	Description	Material	Finish	QTY.
1	1/2" TRADE SIZE RIGID COMPRESSION CONNECTOR BODY	C1008 COLD ROLLED STEEL	.0005 ZINC MIN.	1
2	1.0625 - 18 UNEF 2B COMPRESSION NUT	C1008 COLD ROLLED STEEL	.0005 ZINC MIN.	1
3	1/2"-14 NPT 2B LOCK NUT	C1008 HOT ROLLED STEEL	.0005 ZINC MIN.	1
4	1/2" TRADE SIZE GLAND RING	C1008 GALVANIZED STEEL	.0005 ZINC MIN.	1



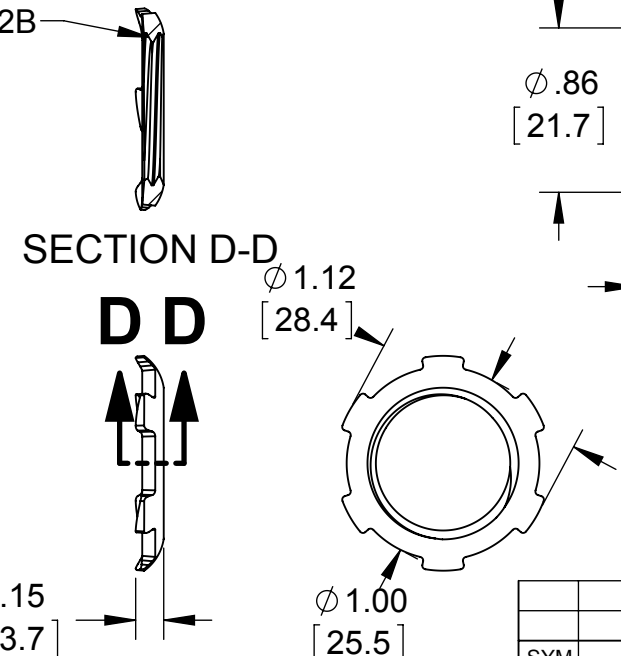
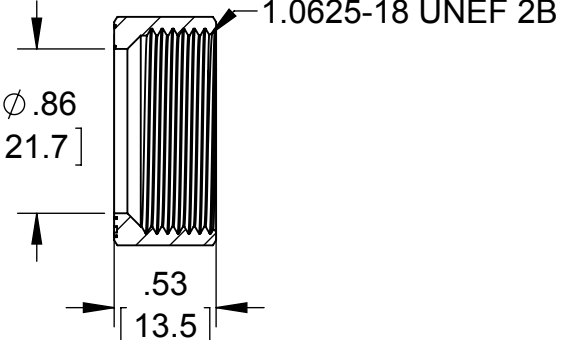
SECTION A-A



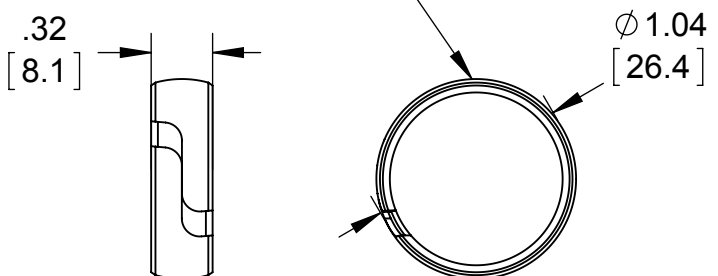
SECTION B-B



SECTION C-C



SECTION D-D



ALL DIMENSIONS ARE PRIOR TO INSTALATION

- NOTES:
- ALL DIMENSIONS ARE IN INCHES AND [MILLIMETERS]
 - LOCKNUT SHALL BE HAND-TIGHTENED AND THEN FURTHER TIGHTENED 1/4 TURN WITH A HAMMER AND A FLAT BLADED SCREWDRIVER OR BY AN EQUIVALENT METHOD
 - COMPRESSION NUT IS TO BE TIGHTENED TO 300 LBF-IN TORQUE
 - CONCRETE TIGHT
 - cULus® LISTED

	INITIAL RELEASE	M.C.	10/23/15
SYM.	REVISION DESCRIPTION	APP	DATE

THE DESIGN AND DIMENSIONS OF THE PRODUCT SHOWN ON THIS DRAWING ARE SUBJECT TO CHANGE WITHOUT NOTICE

TITLE:
1/2" TRADE SIZE RIGID COMPRESSION CONNECTOR

TOLERANCE UNLESS OTHERWISE SPECIFIED .XX DECIMAL ±.015 .XXX DECIMAL ±.005 ANGLE ±2°	RACO South Bend, Indiana		SCALE: B
	DRAWN BY:	J.RICHARD	
	APP. BY:	M.C.	
	DATE:	10/23/15	