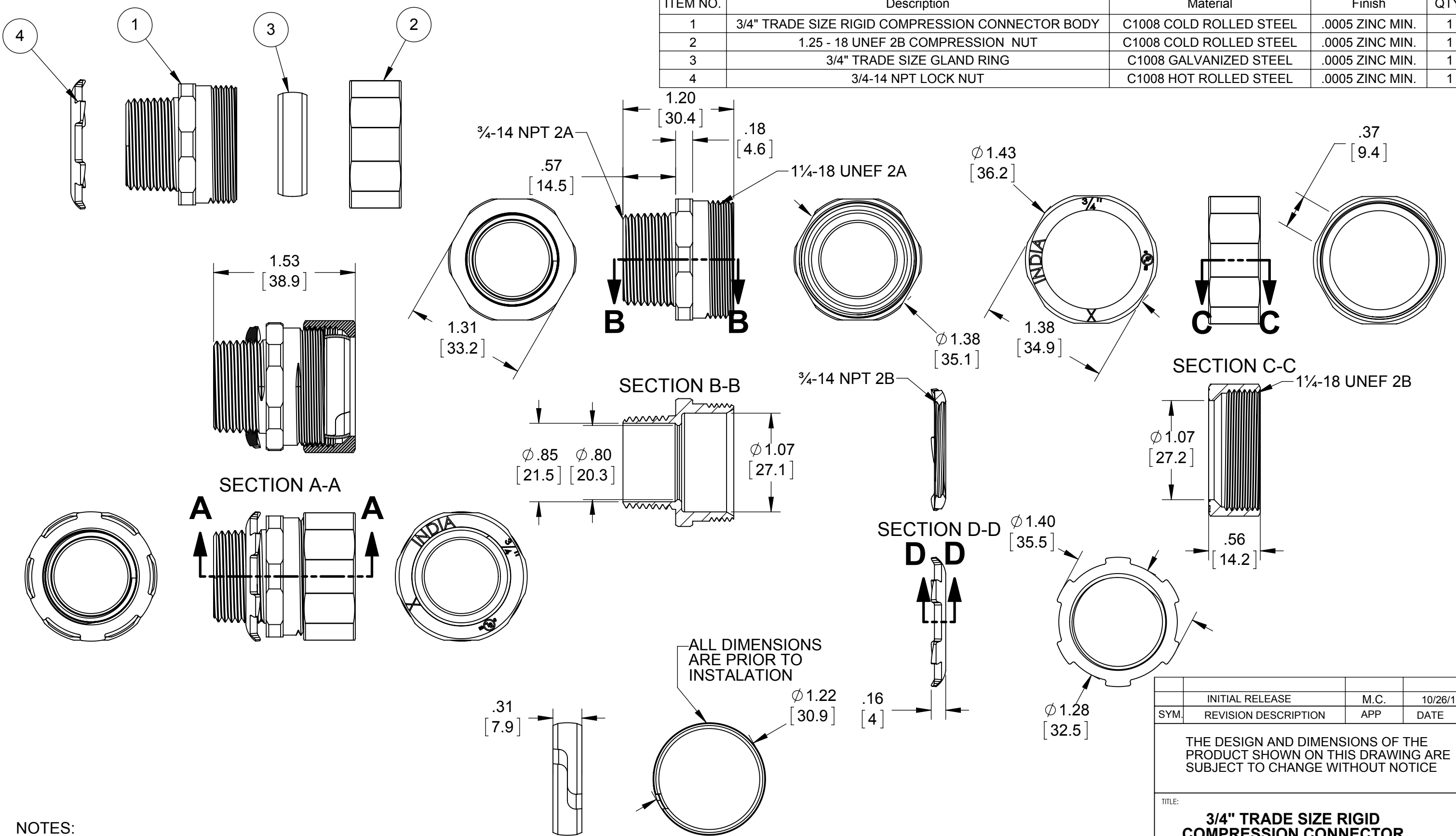


ITEM NO.	Description	Material	Finish	QTY.
1	3/4" TRADE SIZE RIGID COMPRESSION CONNECTOR BODY	C1008 COLD ROLLED STEEL	.0005 ZINC MIN.	1
2	1.25 - 18 UNEF 2B COMPRESSION NUT	C1008 COLD ROLLED STEEL	.0005 ZINC MIN.	1
3	3/4" TRADE SIZE GLAND RING	C1008 GALVANIZED STEEL	.0005 ZINC MIN.	1
4	3/4-14 NPT LOCK NUT	C1008 HOT ROLLED STEEL	.0005 ZINC MIN.	1



- NOTES:
- ALL DIMENSIONS ARE IN INCHES AND [MILLIMETERS]
 - LOCKNUT SHALL BE HAND-TIGHTENED AND THEN FURTHER TIGHTENED 1/4 TURN WITH A HAMMER AND A FLAT BLADED SCREWDRIVER OR BY AN EQUIVALENT METHOD
 - COMPRESSION NUT IS TO BE TIGHTENED TO 500 LBF-IN TORQUE
 - CONCRETE TIGHT
 - cULus® LISTED

ALL DIMENSIONS ARE PRIOR TO INSTALATION

	INITIAL RELEASE	M.C.	10/26/15
SYM.	REVISION DESCRIPTION	APP	DATE

THE DESIGN AND DIMENSIONS OF THE PRODUCT SHOWN ON THIS DRAWING ARE SUBJECT TO CHANGE WITHOUT NOTICE

TITLE:
3/4" TRADE SIZE RIGID COMPRESSION CONNECTOR

TOLERANCE UNLESS OTHERWISE SPECIFIED		RACO South Bend, Indiana DRAWN BY: J.RICHARD APP. BY: M.C. DATE: 10/26/15	SCALE: 1:1
.XX DECIMAL ±.015			
.XXX DECIMAL ±.005			
ANGLE ±2°			