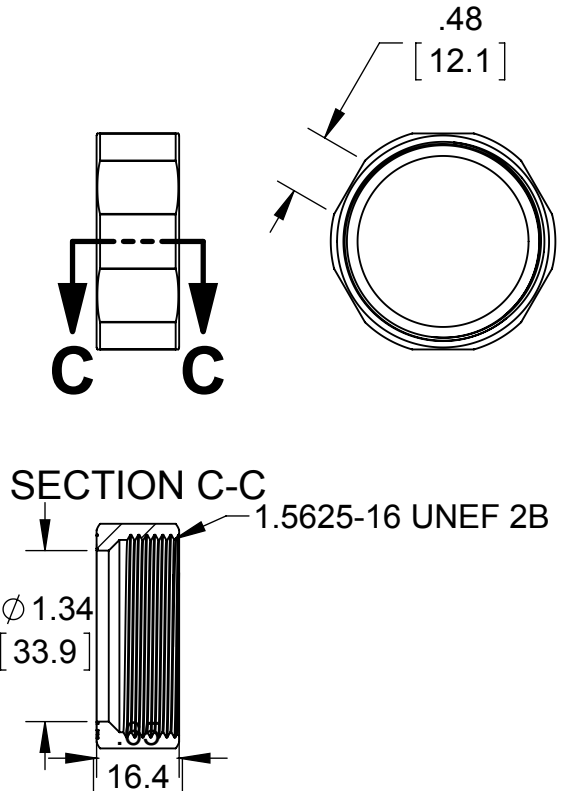
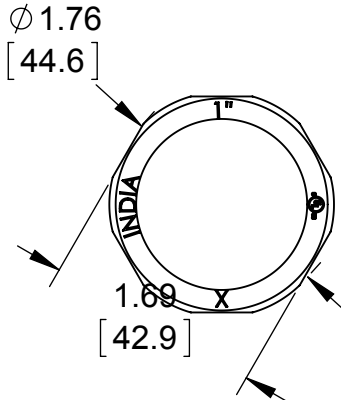
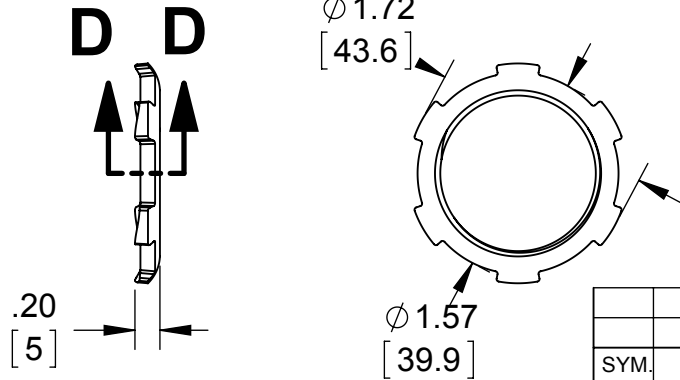
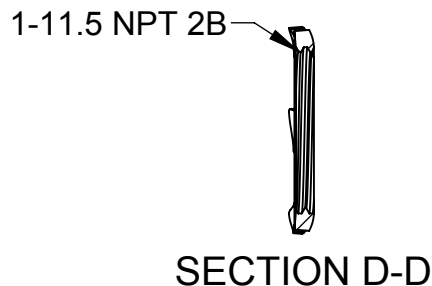
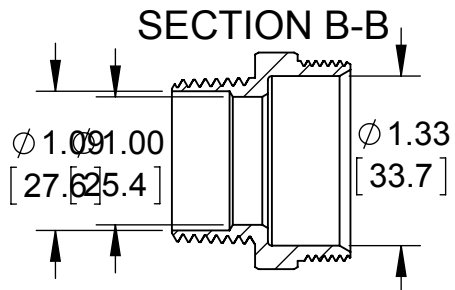
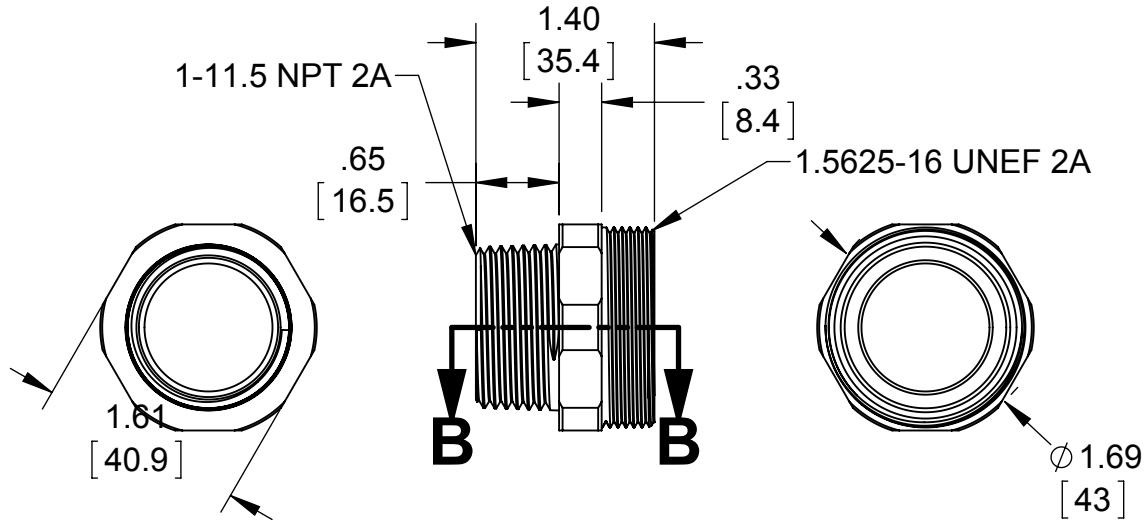
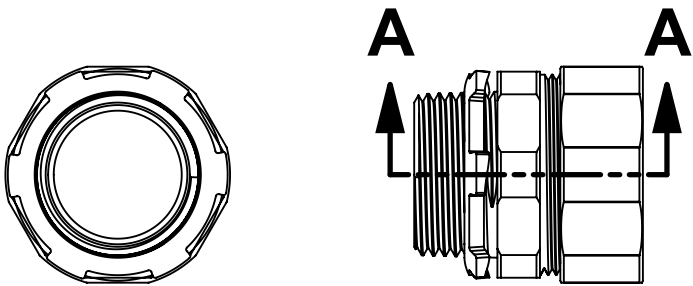
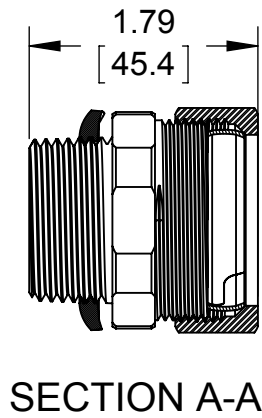
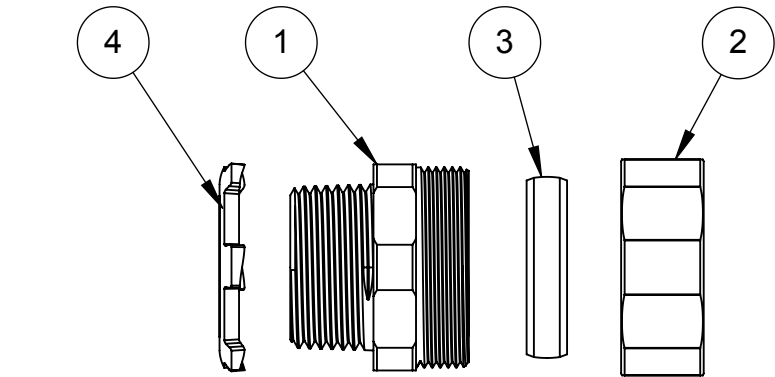
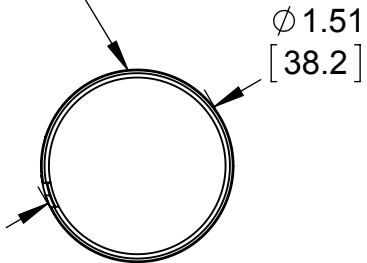
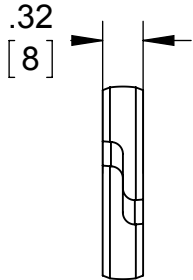


ITEM NO.	Description	Material	Finish	QTY.
1	1" TRADE SIZE RIGID COMPRESSION CONNECTOR BODY	C1008 COLD ROLLED STEEL	.0005 ZINC MIN.	1
2	1.5625 - 16 UNEF 2B COMPRESSION NUT	C1008 COLD ROLLED STEEL	.0005 ZINC MIN.	1
3	1" TRADE SIZE GLAND RING	C1008 GALVANIZED STEEL	.0005 ZINC MIN.	1
4	1-11.5 NPT 2B LOCK NUT	C1008 HOT ROLLED STEEL	.0005 ZINC MIN.	1



ALL DIMENSIONS  
ARE PRIOR TO  
INSTALLATION



- NOTES:
- ALL DIMENSIONS ARE IN INCHES AND [MILLIMETERS]
  - LOCKNUT SHALL BE HAND-TIGHTENED AND THEN FURTHER TIGHTENED 1/4 TURN WITH A HAMMER AND A FLAT BLADED SCREWDRIVER OR BY AN EQUIVALENT METHOD
  - COMPRESSION NUT IS TO BE TIGHTENED TO 700 LBF-IN TORQUE
  - CONCRETE TIGHT
  - cULus® LISTED

	INITIAL RELEASE	M.C.	10/26/15
SYM.	REVISION DESCRIPTION	APP	DATE
THE DESIGN AND DIMENSIONS OF THE PRODUCT SHOWN ON THIS DRAWING ARE SUBJECT TO CHANGE WITHOUT NOTICE			
TITLE: <b>1" TRADE SIZE RIGID COMPRESSION CONNECTOR</b>			
TOLERANCE UNLESS OTHERWISE SPECIFIED		<b>RACO</b> South Bend, Indiana	
.XX DECIMAL ±.015 .XXX DECIMAL ±.005 ANGLE ±2°		DRAWN BY: J.RICHARD	SCALE: 2:3
		APP. BY: M.C.	
		DATE: 10/26/15	