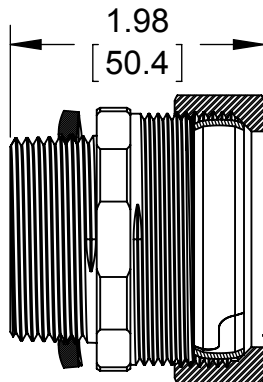
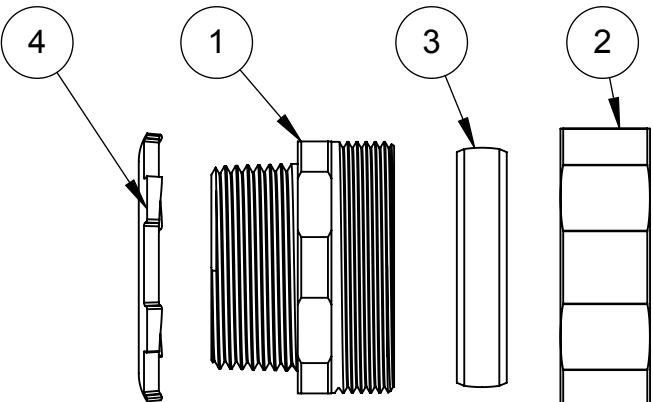
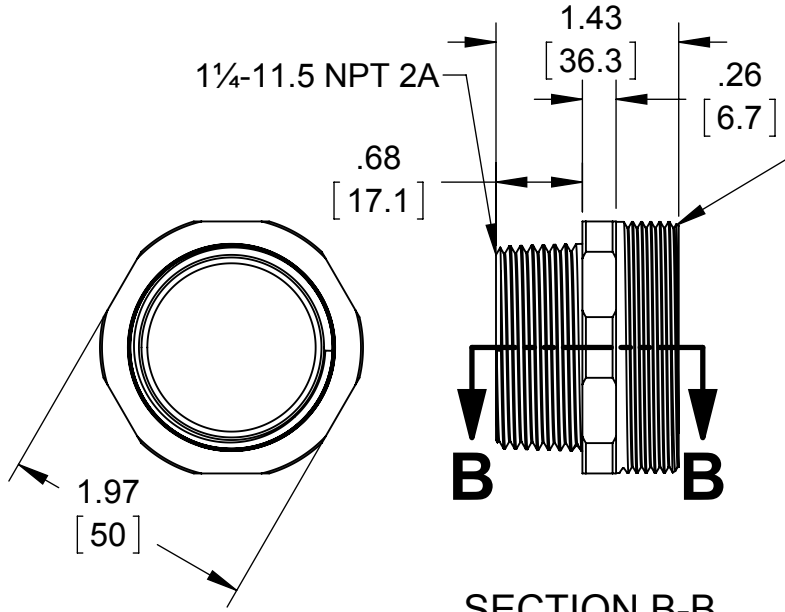
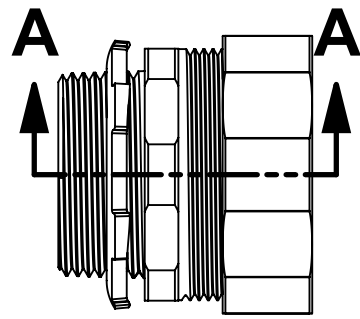


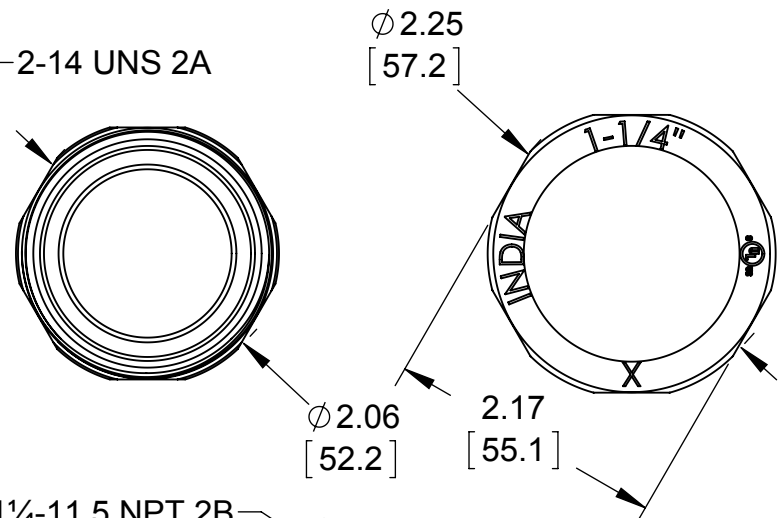
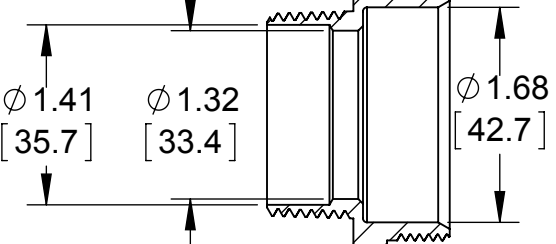
ITEM NO.	Description	Material	Finish	QTY.
1	1/4" TRADE SIZE RIGID COMPRESSION CONNECTOR BODY	C1008 COLD ROLLED STEEL	.0005 ZINC MIN.	1
2	2-14 UNS 2B COMPRESSION NUT	C1008 COLD ROLLED STEEL	.0005 ZINC MIN.	1
3	1/4" TRADE SIZE GLAND RING	C1008 GALVANIZED STEEL	.0005 ZINC MIN.	1
4	1/4-11 1/2 NPT LOCK NUT	C1008 HOT ROLLED STEEL	.0005 ZINC MIN.	1



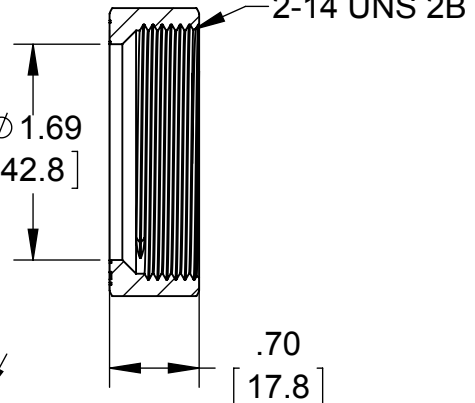
SECTION A-A



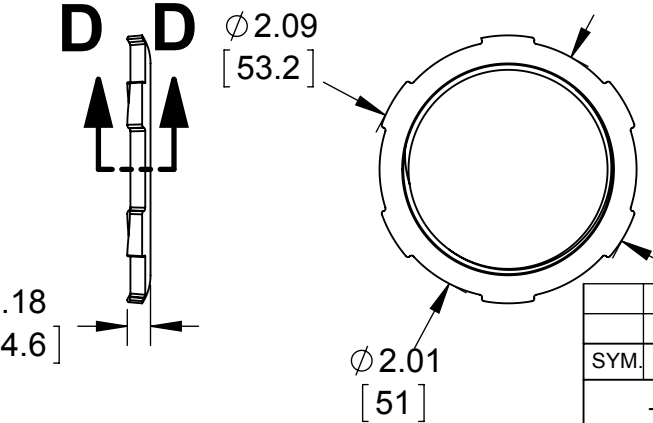
SECTION B-B



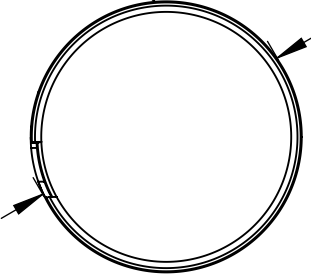
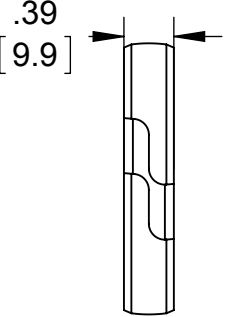
SECTION C-C



SECTION D-D



ALL DIMENSIONS ARE PRIOR TO INSTALATION



- NOTES:
- ALL DIMENSIONS ARE IN INCHES AND [MILLIMETERS]
 - LOCKNUT SHALL BE HAND-TIGHTENED AND THEN FURTHER TIGHTENED 1/4 TURN WITH A HAMMER AND A FLAT BLADED SCREWDRIVER OR BY AN EQUIVALENT METHOD
 - COMPRESSION NUT IS TO BE TIGHTENED TO 1000 LBF-IN TORQUE
 - CONCRETE TIGHT
 - cULus® LISTED

SYM.	REVISION DESCRIPTION	M.C. APP	DATE
	INITIAL RELEASE	M.C.	10/26/15

THE DESIGN AND DIMENSIONS OF THE PRODUCT SHOWN ON THIS DRAWING ARE SUBJECT TO CHANGE WITHOUT NOTICE

TITLE:
1/4" TRADE SIZE RIGID COMPRESSION CONNECTOR

TOLERANCE UNLESS OTHERWISE SPECIFIED		RACO South Bend, Indiana	SCALE: 2:3
.XX DECIMAL ±.015	DRAWN BY: J.RICHARD		
.XXX DECIMAL ±.005	APP. BY: M.C.		
ANGLE ±2°	DATE: 10/26/15		