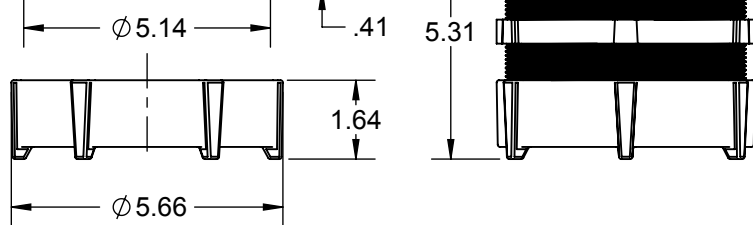


SECTION A-A



- NOTES:
 1. ALL DIMENSIONS ARE IN INCHES AND [MILLIMETERS]
 2. UL LISTED

LIST OF PARTS

DESCRIPTION	MATERIAL	FINISH
BODY	MALLEABLE IRON	ZINC PLATED
CAP	MALLEABLE IRON	ZINC PLATED
SEAL RING	STEEL	ZINC PLATED

1836 CUS

INITIAL RELEASE	RMV	12-15-17
SYM.	REVISION DESCRIPTION	APP DATE

1836

DIMENSION SHEET FOR CAT. NO.

THE DESIGN AND DIMENSIONS OF THE PRODUCT SHOWN ON THIS DRAWING ARE SUBJECT TO CHANGE WITHOUT NOTICE

TITLE:
4" TS COMPRESSION COUPLING FOR EMT, IMC, & RIGID CONDUIT

TOLERANCE UNLESS OTHERWISE SPECIFIED

.XX DECIMAL ±.015
 .XXX DECIMAL ±.005
 ANGLE ±2°

RACO

South Bend, Indiana

DRAWN BY:	RMV	SCALE:
APP. BY:	N.S.	1:4
DATE:	12-15-17	

SIZE:

A

8.5in*11in