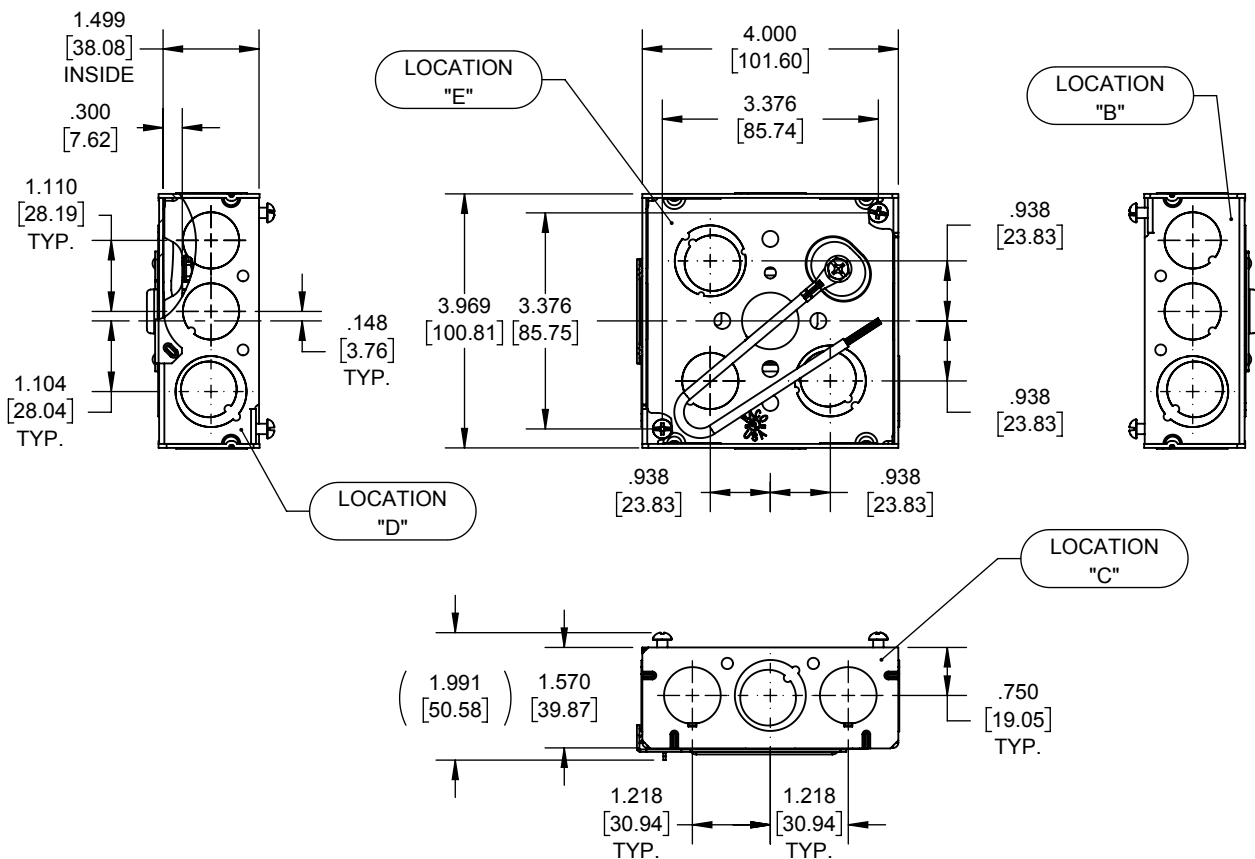
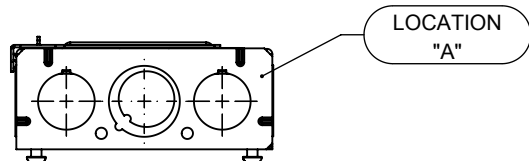


PIGTAIL:
 WIRE: #12 AWG STRANDED, 10-1/2" LONG, GREEN INSULATED, U.L. LISTED, 600 VOLT MAX;
 EXTRA-GRIP RING TERMINAL, 16/12 AWG BRASS;
 #10-32 X 3/8" GROUND SCREW W/COMBO HEX WASHER HEAD (SLOTTED, #2 PHILLIPS AND ROBERTSON)



- NOTES:**
- ALL DIMENSIONS ARE IN INCHES AND [MILLIMETERS]
 - BOX VOLUME: 21.0 IN³ [344.1 CM³]
 - cULus LISTED

KNOCKOUTS		
TRADE SIZE	LOCATION	QTY.
(1/2"-3/4") TKO®	A, B, C, D	1
1/2" KO	A, B, C, D, E	2
(1/2"-3/4") TKO®	E	2

LIST OF PARTS

DESCRIPTION	MATERIAL	FINISH
SPACER	STEEL	GALVANIZED
SIDE	STEEL	GALVANIZED
FARSIDE SUPPORT	STEEL	GALVANIZED
FASTENERS	STEEL	GALVANIZED
PIGTAIL	INSULATED STRANDED COPPER	N/A

REV.	DATE	DESCRIPTION	BY:
1	11/12/18	ASSY IS NOW cULus	RMV
	09/05/17	INITIAL RELEASE	RMV

REVISIONS

THE DESIGN AND DIMENSIONS OF THE PRODUCT SHOWN ON THIS DRAWING ARE SUBJECT TO CHANGE WITHOUT NOTICE

TITLE:
4" SQ. BOX, 1-1/2" DP., 1/2"-3/4" KO'S, W/ PIGTAIL & FARSIDE SUPPORT

TOLERANCE UNLESS OTHERWISE SPECIFIED

.XX DECIMAL ±.015
 .XXX DECIMAL ±.005
 ANGLE ±2°

RACO

South Bend, Indiana

DRAWN BY:	RMV	SCALE:	1:3
APP. BY:	N.S.		
DATE:	09-05-17		

189F CUS

189F

DIMENSION SHEET FOR CAT. NO.

SIZE:

A

8.5in x 11in