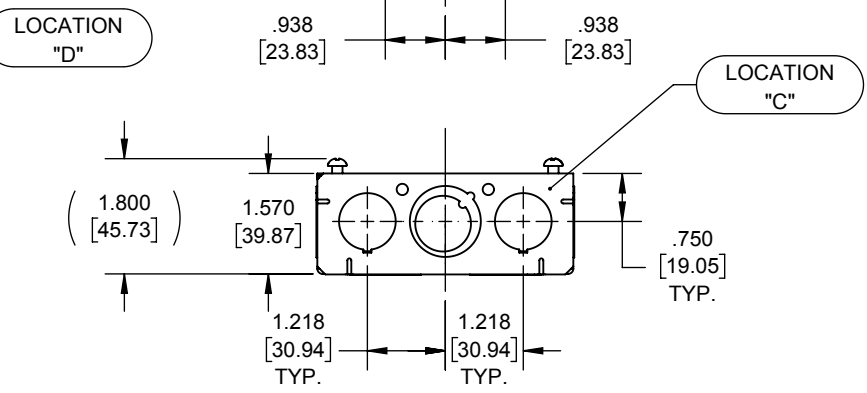
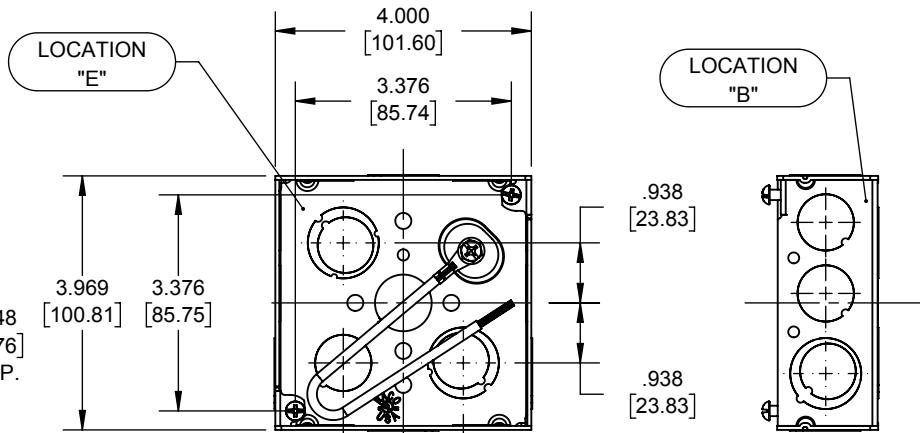
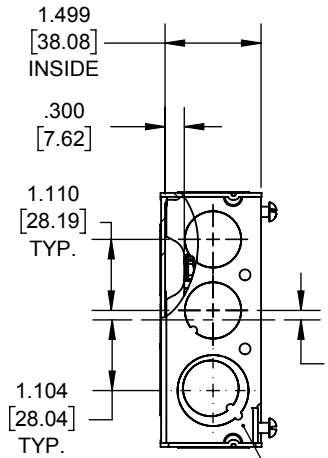
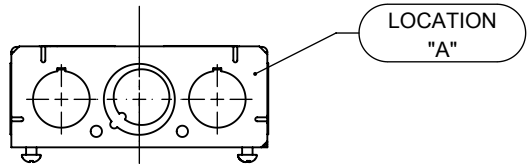
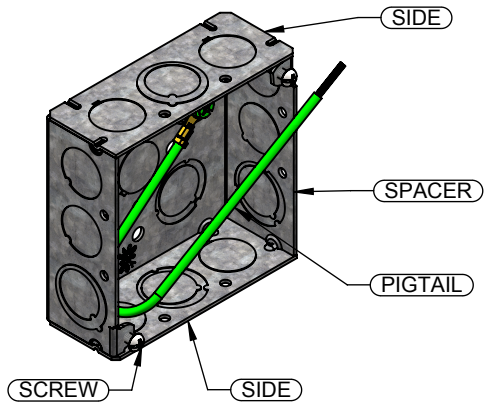


REVISIONS			
REV.	DATE	DESCRIPTION	BY:
-	08/24/17	INITIAL RELEASE	RMV
1	11/12/18	ASSEMBLY IS NOW cULus	RMV

PIGTAIL:

WIRE: #12 AWG STRANDED, 10-1/2" LONG, GREEN INSULATED, U.L. LISTED, 600 VOLT MAX;
EXTRA-GRIP RING TERMINAL, 16/12 AWG BRASS;
#10-32 X 3/8" GROUND SCREW W/COMBO HEX WASHER HEAD (SLOTTED, #2 PHILLIPS AND ROBERTSON)



DESCRIPTION	MATERIAL	FINISH
PIGTAIL	INSULATED STRANDED COPPER	N/A
FASTENERS	STEEL	GALVANIZED
SIDE	STEEL	GALVANIZED
SPACER	STEEL	GALVANIZED

THE DESIGN AND DIMENSIONS OF THE PRODUCT SHOWN ON THIS DRAWING ARE SUBJECT TO CHANGE WITHOUT NOTICE

TITLE:
4" SQ. BOX, 1-1/2" DP., 1/2"-3/4" KO'S, W/ PIGTAIL

- NOTES:
1. ALL DIMENSIONS ARE IN INCHES AND [MILLIMETERS]
2. BOX VOLUME: 21.0 IN³ [344.1 CM³]
3. cULus LISTED

KNOCKOUTS		
TRADE SIZE	LOCATION	QTY.
(1/2"-3/4") TKO®	A, B, C, D	1
1/2" KO	A, B, C, D, E	2
(1/2"-3/4") TKO®	E	2

TOLERANCE UNLESS OTHERWISE SPECIFIED
.XX DECIMAL ± .015
.XXX DECIMAL ± .005
ANGLE ± 2°



DRAWN BY:	RMV	SCALE:	1:3
APP. BY:	N.S.		
DATE:	XX/XX/XX		