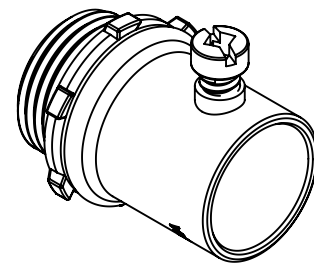


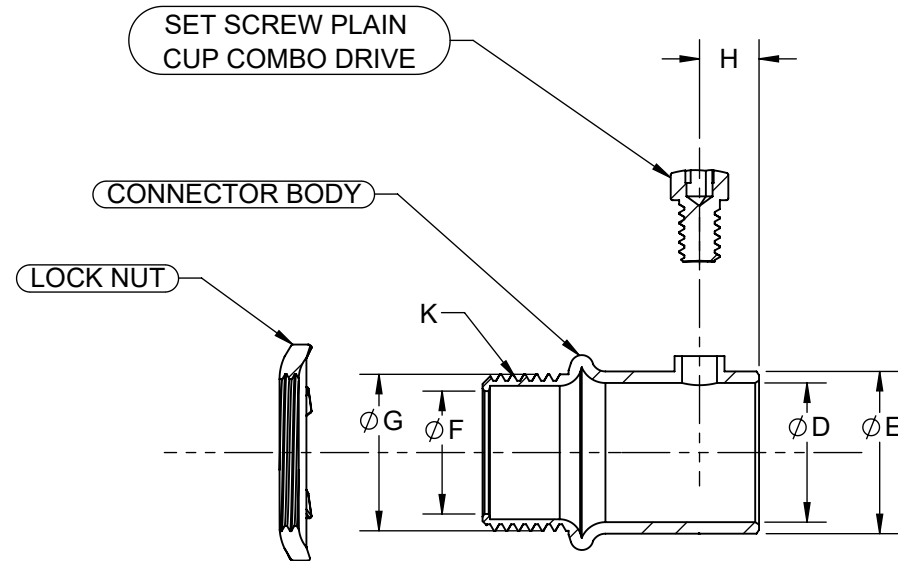
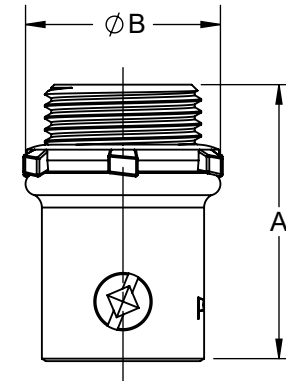
CAT. #	SIZE	A	B	C	D	E	F	G	H	K
2002	1/2"	1.44 [36.5]	1.02 [25.8]	1.13 [28.6]	0.73 [18.4]	0.85 [21.3]	0.64 [16.3]	0.82 [20.7]	0.31 [7.9]	0.858-14UNS
2003	3/4"	1.51 [38.3]	1.24 [31.5]	1.38 [35.1]	0.95 [24.0]	1.07 [27.1]	0.79 [20.1]	1.02 [25.8]	0.33 [8.4]	1.087-14UNS
2004	1"	1.62 [41.1]	1.47 [37.3]	1.71 [43.3]	1.17 [29.7]	1.34 [34.0]	1.04 [26.4]	1.27 [32.3]	0.33 [8.4]	1.331-18UNS

REVISIONS			
REV.	DATE	DESCRIPTION	BY:
-	07-26-21	INITIAL RELEASE OF DRAWING	VS

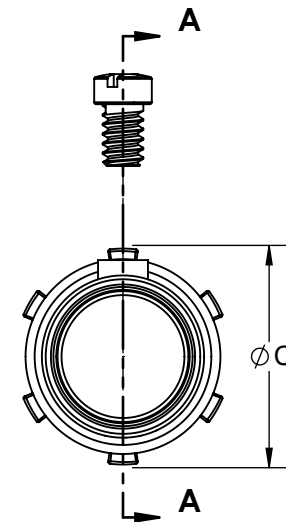
FILE NO.:  
**SET SCREW CONNECTOR-STEEL UNINSULATED 0.50 TO 1.00 CUS**



**ISOMETRIC VIEW**



**SECTION A-A**



DESCRIPTION	MATERIAL	FINISH
LOCK NUT	STEEL	ZINC
SET SCREW PLAIN CUP COMBO DRIVE	STEEL	ZINC
CONNECTOR BODY	STEEL	ZINC

**LIST OF PARTS**

THE DESIGN AND DIMENSIONS OF THE PRODUCT SHOWN ON THIS DRAWING ARE SUBJECT TO CHANGE WITHOUT NOTICE

TITLE:  
**SET SCREW CONNECTOR-STEEL UNINSULATED 0.50 TO 1.00 CUS**

TOLERANCE UNLESS OTHERWISE SPECIFIED  
.XX DECIMAL ±.015  
.XXX DECIMAL ±.005  
ANGLE ±2°



DRAWN BY:	VS	SCALE:	SIZE:
APP. BY:	N.S.	1:1	<b>B</b>
DATE:	07-26-21		

**NOTES:**

- ALL DIMENSIONS ARE IN INCHES AND [MILLIMETERS].
- LOCKNUT SHALL BE HAND-TIGHTENED AND THEN FURTHER TIGHTENED 1/4 TURN WITH A HAMMER AND A FLAT BLADED SCREWDRIVER OR BY AN EQUIVALENT METHOD.
- cULus LISTED.

DIMENSION SHEET FOR CAT. NO.  
**SEE CHART**

1 1/16" x 1 1/16"