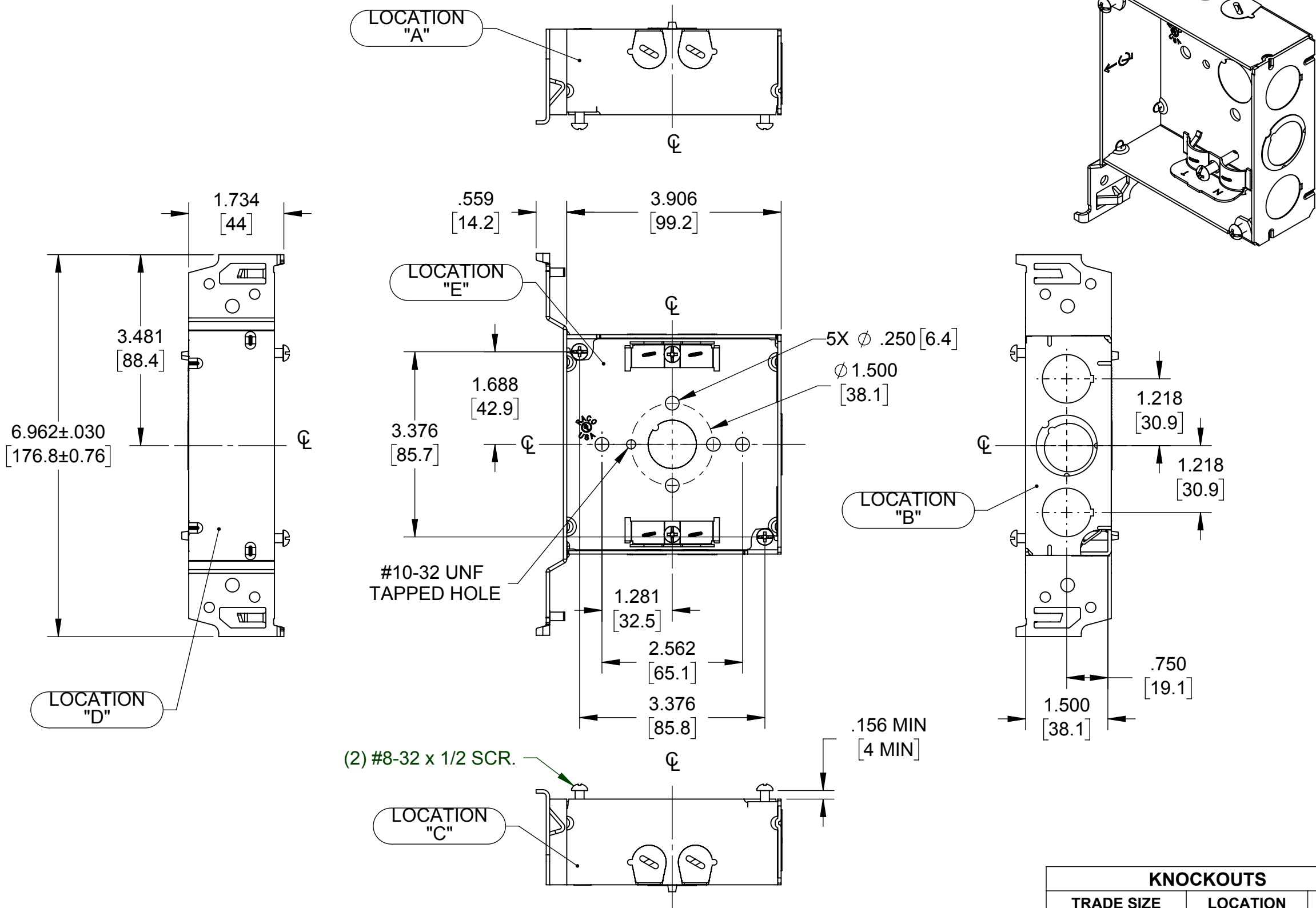


**L CLAMP ACCEPTS THE FOLLOWING WIRE TYPES:**  
 NONMETALLIC SHEATHED CABLE: #14-2 TO # 10-3 WITH GROUND



- NOTES:**
1. ALL DIMENSIONS ARE IN INCHES AND [MILLIMETERS]
  2. BOX VOLUME: 21.0 IN<sup>3</sup> [344.1 CM<sup>3</sup>]
  3. UL LISTED

KNOCKOUTS		
TRADE SIZE	LOCATION	QTY.
1/2" KO	E	1
1/2" KO	B	2
(1/2"-3/4") TKO®	B	1

LIST OF PARTS		
DESCRIPTION	MATERIAL	FINISH
BOX	STEEL	GALVANIZED
FASTENERS	STEEL	GALVANIZED
BRACKETS	STEEL	GALVANIZED

SYMBOL	INITIAL RELEASE	RMV	06-07-17
	REVISION DESCRIPTION	APP	DATE

THE DESIGN AND DIMENSIONS OF THE PRODUCT SHOWN ON THIS DRAWING ARE SUBJECT TO CHANGE WITHOUT NOTICE

TITLE: **4" SQ. 1-1/2" DEEP WELDED BOX W/ FS BRACKET & 1/2" KOS & 3/4" TKO**

**RACO**  
 South Bend, Indiana

DRAWN BY: **RMV** SCALE: **1:2**

APP. BY: **RMV**

DATE: **06-07-17**

TOLERANCE UNLESS OTHERWISE SPECIFIED:  
 .XX DECIMAL ±.015  
 .XXX DECIMAL ±.005  
 ANGLE ±2°

FILE NAME: **223 CUS**

DIMENSION SHEET FOR CAT. NO. **223**

SIZE: **B**