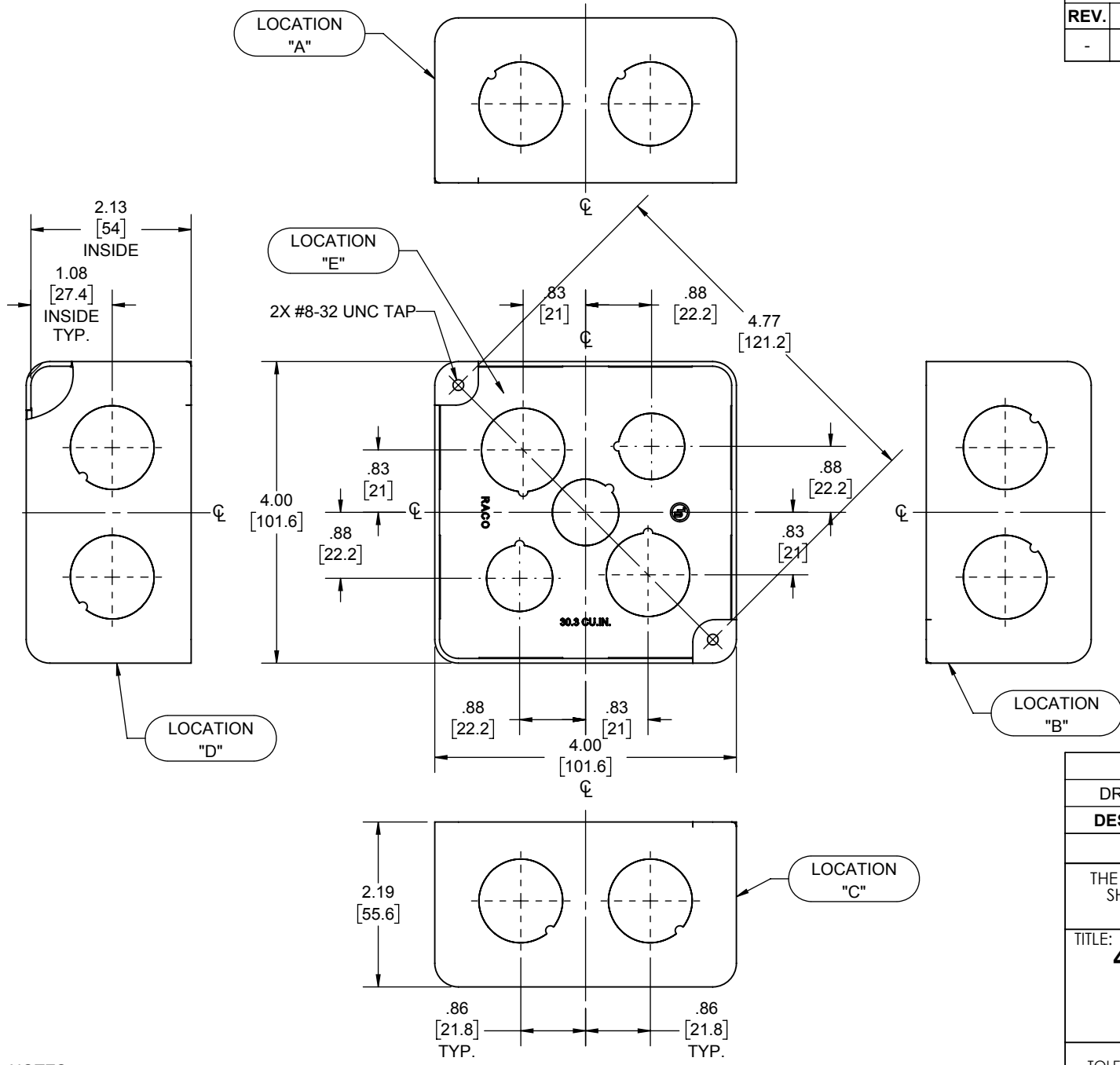
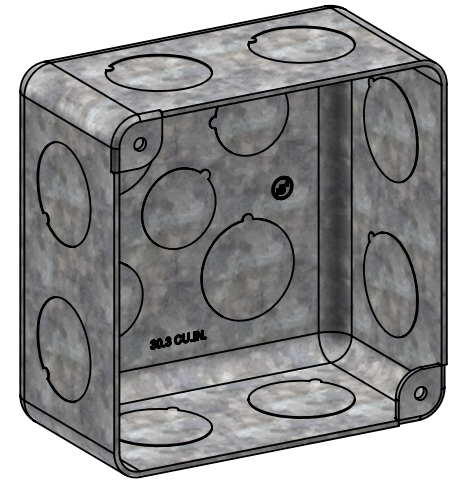


REVISIONS			
REV.	DATE	DESCRIPTION	BY
-	10-28-19	INITIAL RELEASE	RMV



- NOTES:
1. ALL DIMENSIONS ARE IN INCHES AND [MILLIMETERS]
  2. BOX VOLUME: 30.3 IN<sup>3</sup> [496.5 CM<sup>3</sup>]
  3. UL LISTED

KNOCKOUTS		
TRADE SIZE	LOCATION	QTY.
1/2" KO	E	3
3/4" KO	E	2
1/2" KO	A, B, C, D	2

DRAWN BOX	STEEL	GALVANIZED
DESCRIPTION	MATERIAL	FINISH

LIST OF PARTS

THE DESIGN AND DIMENSIONS OF THE PRODUCT SHOWN ON THIS DRAWING ARE SUBJECT TO CHANGE WITHOUT NOTICE

TITLE:  
**4" SQ. PLENUM BOX, 2-1/8" DEEP, 3/4" KO'S**

TOLERANCE UNLESS OTHERWISE SPECIFIED  
 .XX DECIMAL ± .015  
 .XXX DECIMAL ± .005  
 ANGLE ± 2°



DRAWN BY:	RMV	SCALE:	SIZE:
APP. BY:	N.S.		
DATE:	10-28-19	1:2	<b>A</b>