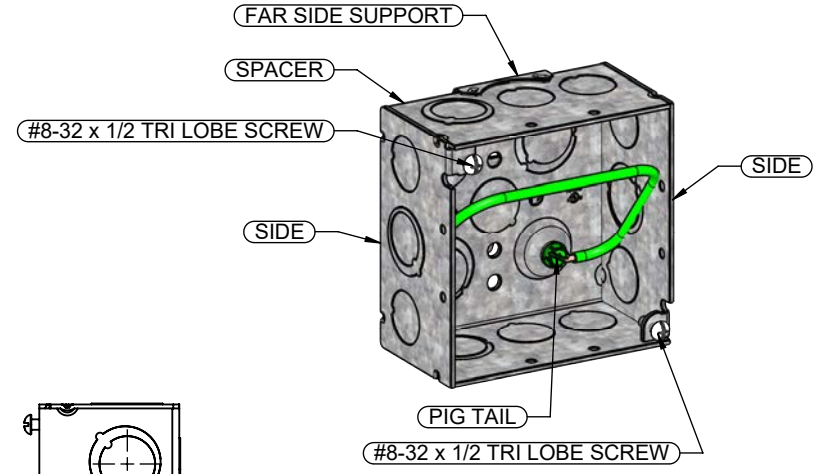
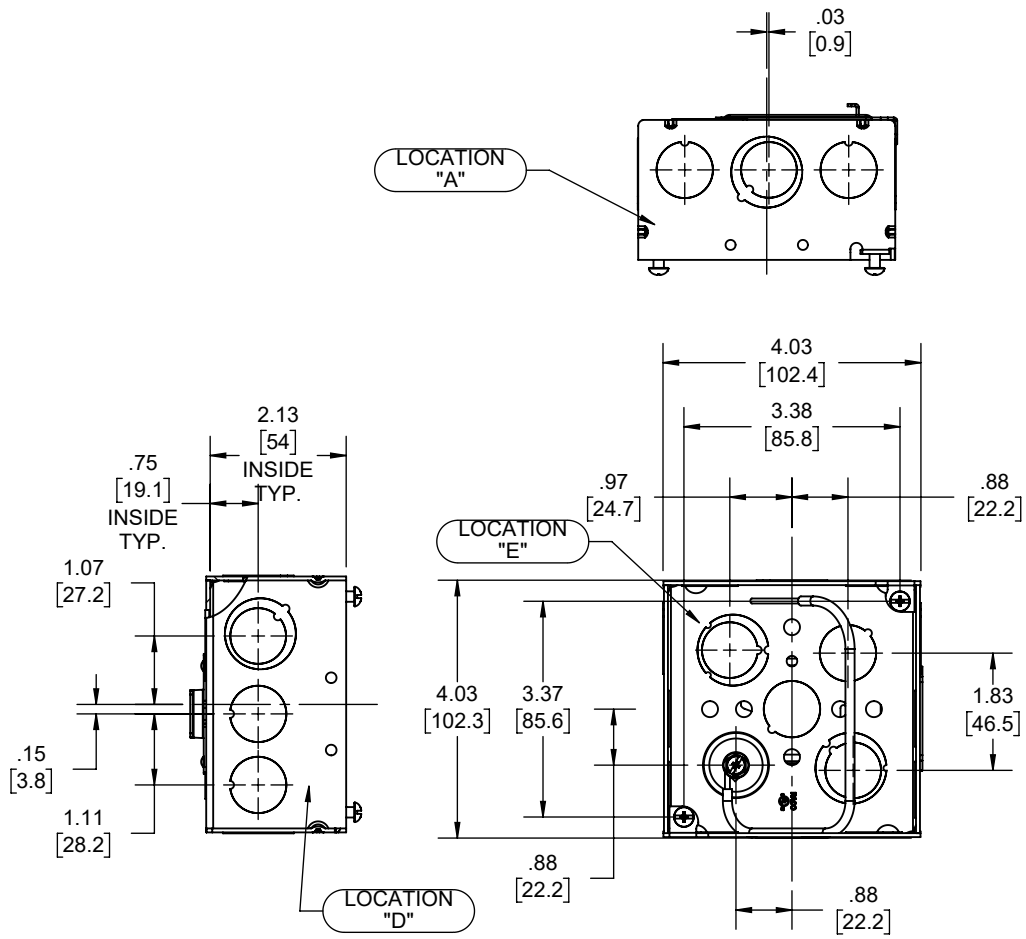
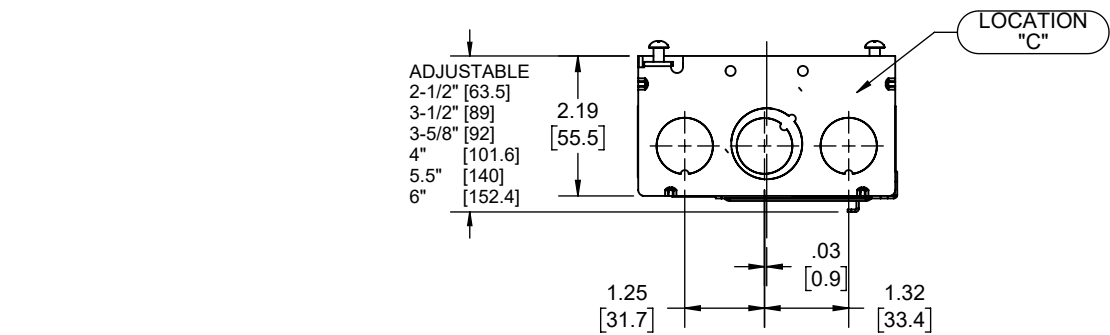


REVISIONS			
REV.	DATE	DESCRIPTION	BY:
-	08-08-18	INITIAL RELEASE OF DRAWING	RMV
1	05-12-21	CHG'D LOCATION OF FAR SIDE SUPPORT	RMV



PIGTAIL:
 WIRE: #12 AWG SOLID, 8-1/2" LONG, GREEN TW INSULATED, U.L. LISTED, 600 VOLT MAX, STRIPPED 1" IN FROM EACH END;
 #10-32 X 3/8" GROUND SCREW W/COMBO HEX WASHER HEAD (SLOTTED, #2 PHILLIPS AND ROBERTSON)



- ADJUSTABLE
 2-1/2" [63.5]
 3-1/2" [89]
 3-5/8" [92]
 4" [101.6]
 5.5" [140]
 6" [152.4]

- NOTES:
 1. ALL DIMENSIONS ARE IN INCHES AND [MILLIMETERS]
 2. BOX VOLUME: 30.3 IN³ [496.5 CM³]
 3. cULus LISTED

DESCRIPTION	MATERIAL	FINISH
PIGTAIL	COPPER	SEE DRAWING
FAR SIDE SUPPORT	STEEL	GALVANIZED
FASTENERS	STEEL	GALVANIZED
SIDE	STEEL	GALVANIZED
SPACER	STEEL	GALVANIZED

LIST OF PARTS
 THE DESIGN AND DIMENSIONS OF THE PRODUCT SHOWN ON THIS DRAWING ARE SUBJECT TO CHANGE WITHOUT NOTICE

TITLE:
ASSEMBLY 4" SQ x 2-1/8" DEEP BOX WITH FAR SIDE SUPPORT

KNOCKOUTS		
TRADE SIZE	LOCATION	QTY.
(1/2"-3/4") TKO®	A, B, C, D	1
1/2" KO	A, B, C, D, E	2
(1/2"-3/4") TKO®	E	2

TOLERANCE UNLESS OTHERWISE SPECIFIED
 .XX DECIMAL ± .015
 .XXX DECIMAL ± .005
 ANGLE ± 2°

DRAWN BY: RMV
 APP. BY: N.S.
 DATE: 08-08-18

SCALE: 1:3

SIZE: **A**