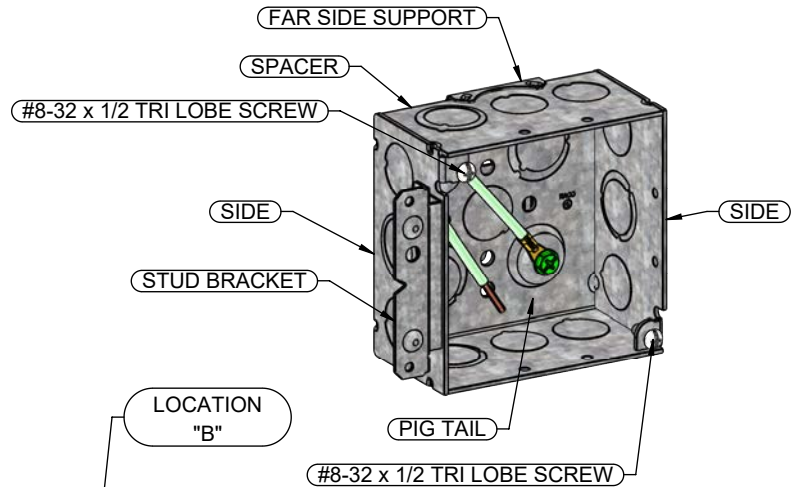
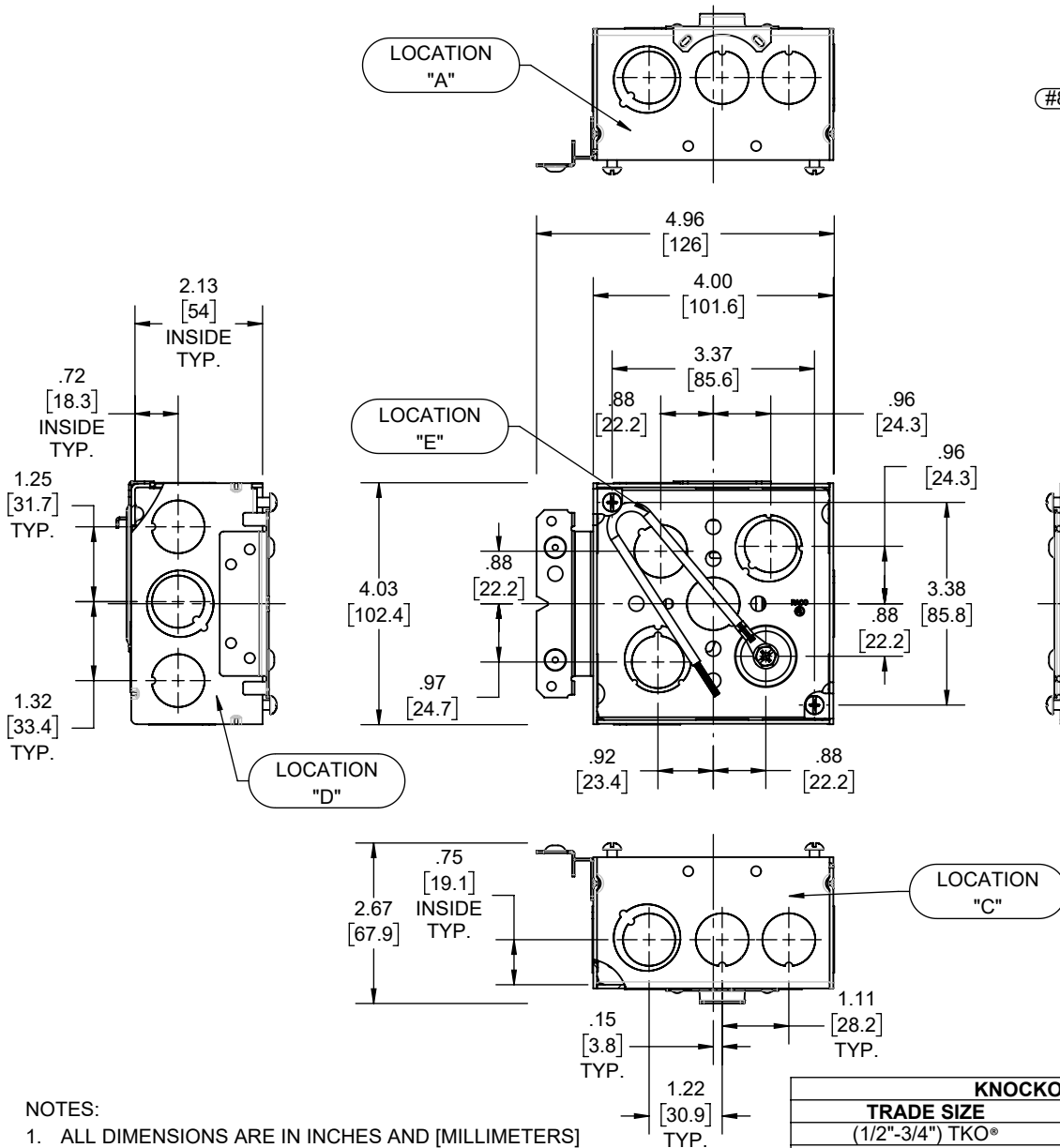


PIGTAIL:
 WIRE: #12 AWG STRANDED, 10-1/2" LONG, GREEN INSULATED,
 U.L. LISTED, 600 VOLT MAX;
 #10-32 X 3/8" GROUND SCREW W/COMBO HEX WASHER HEAD
 (SLOTTED, #2 PHILLIPS AND ROBERTSON)

REVISIONS			
REV.	DATE	DESCRIPTION	BY
-	12-12-22	INITIAL RELEASE	RMV

FILE NO.: 232HS CUS



DESCRIPTION	MATERIAL	FINISH
PIG TAIL	COPPER	SEE DRAWING
FAR SIDE SUPPORT	STEEL	GALVANIZED
STUD BRACKET	STEEL	GALVANIZED
FASTENERS	STEEL	GALVANIZED
SIDE	STEEL	GALVANIZED
SPACER	STEEL	GALVANIZED

DIMENSION SHEET FOR CAT. NO. 232HS

LIST OF PARTS

THE DESIGN AND DIMENSIONS OF THE PRODUCT SHOWN ON THIS DRAWING ARE SUBJECT TO CHANGE WITHOUT NOTICE

TITLE:
ASSEMBLY 4" SQ x 2-1/8" DEEP BOX WITH FAR SIDE SUPPORT AND (1) STUD BRACKET

- NOTES:
- ALL DIMENSIONS ARE IN INCHES AND [MILLIMETERS]
 - VOLUME: 30.3 IN³ [496.5 CM³]
 - UL LISTED

KNOCKOUTS		
TRADE SIZE	LOCATION	QTY.
(1/2"-3/4") TKO*	A, B, C, D	1
(1/2"-3/4") TKO*	E	2
1/2" KO	A, B, C, D, E	2

TOLERANCE UNLESS OTHERWISE SPECIFIED

.XX DECIMAL ± .015
 .XXX DECIMAL ± .005
 ANGLE ± 2°



DRAWN BY:	RMV	SCALE:	SIZE:
APP. BY:	N.S.		
DATE:	12-12-22	1:3	A

8.5in 1 in