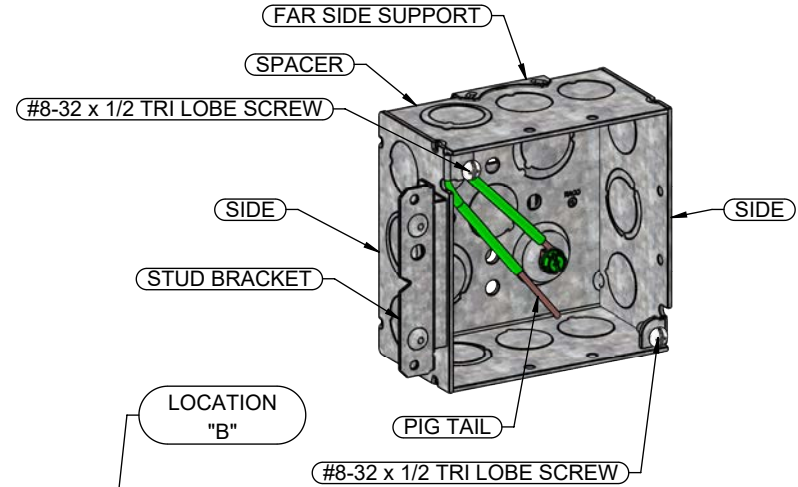
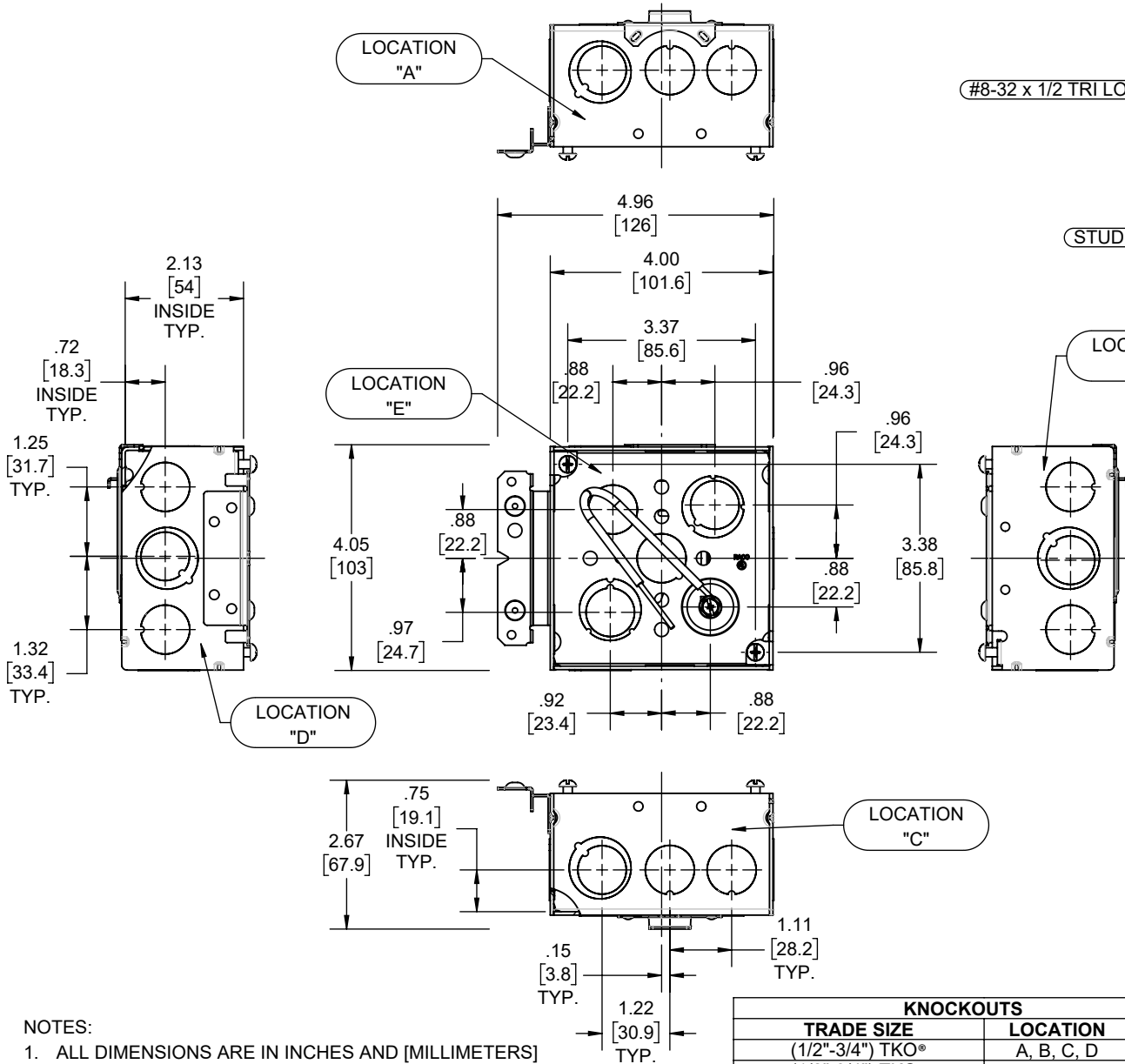


PIGTAIL:
 WIRE: #12 AWG SOLID, 8-1/2" LONG, GREEN TW INSULATED, U.L.
 LISTED, 600 VOLT MAX,
 STRIPPED 1" IN FROM EACH END;
 #10-32 X 3/8" GROUND SCREW W/COMBO HEX WASHER HEAD
 (SLOTTED, #2 PHILLIPS AND ROBERTSON)

REVISIONS			
REV.	DATE	DESCRIPTION	BY
-	12-12-22	INITIAL RELEASE	RMV

FILE NO.:
232H CUS



DESCRIPTION	MATERIAL	FINISH
PIGTAIL	COPPER	SEE DRAWING
FAR SIDE SUPPORT	STEEL	GALVANIZED
STUD BRACKET	STEEL	GALVANIZED
FASTENERS	STEEL	GALVANIZED
SIDE	STEEL	GALVANIZED
SPACER	STEEL	GALVANIZED

LIST OF PARTS

THE DESIGN AND DIMENSIONS OF THE PRODUCT SHOWN ON THIS DRAWING ARE SUBJECT TO CHANGE WITHOUT NOTICE

TITLE:

ASSEMBLY 4" SQ x 2-1/8" DEEP BOX WITH FAR SIDE SUPPORT AND (1) STUD BRACKET

KNOCKOUTS		
TRADE SIZE	LOCATION	QTY.
(1/2"-3/4") TKO*	A, B, C, D	1
(1/2"-3/4") TKO*	E	2
1/2" KO	A, B, C, D, E	2

TOLERANCE UNLESS OTHERWISE SPECIFIED

.XX DECIMAL ± .015
 .XXX DECIMAL ± .005
 ANGLE ± 2°



DRAWN BY:	RMV	SCALE:	SIZE:
APP. BY:	N.S.		
DATE:	12-12-22	1:3	A

NOTES:

- ALL DIMENSIONS ARE IN INCHES AND [MILLIMETERS]
- VOLUME: 30.3 IN³ [496.5 CM³]
- UL LISTED

DIMENSION SHEET FOR CAT. NO.
232H

8.5in*1in