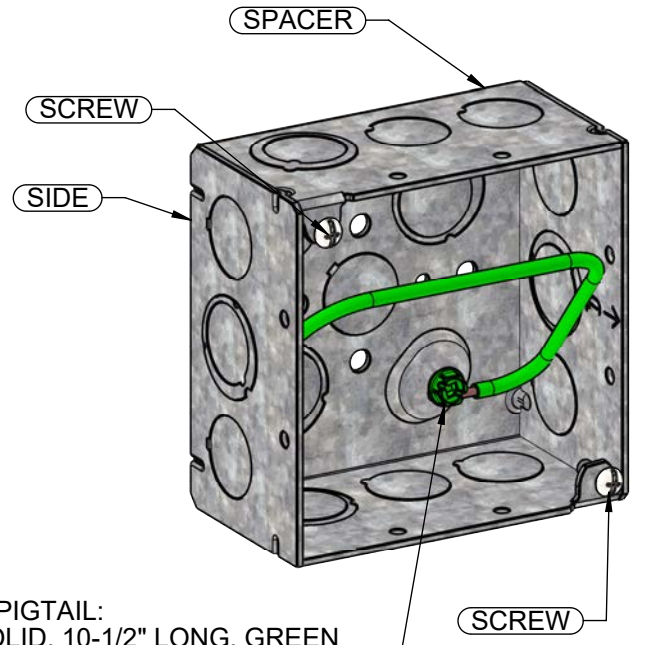
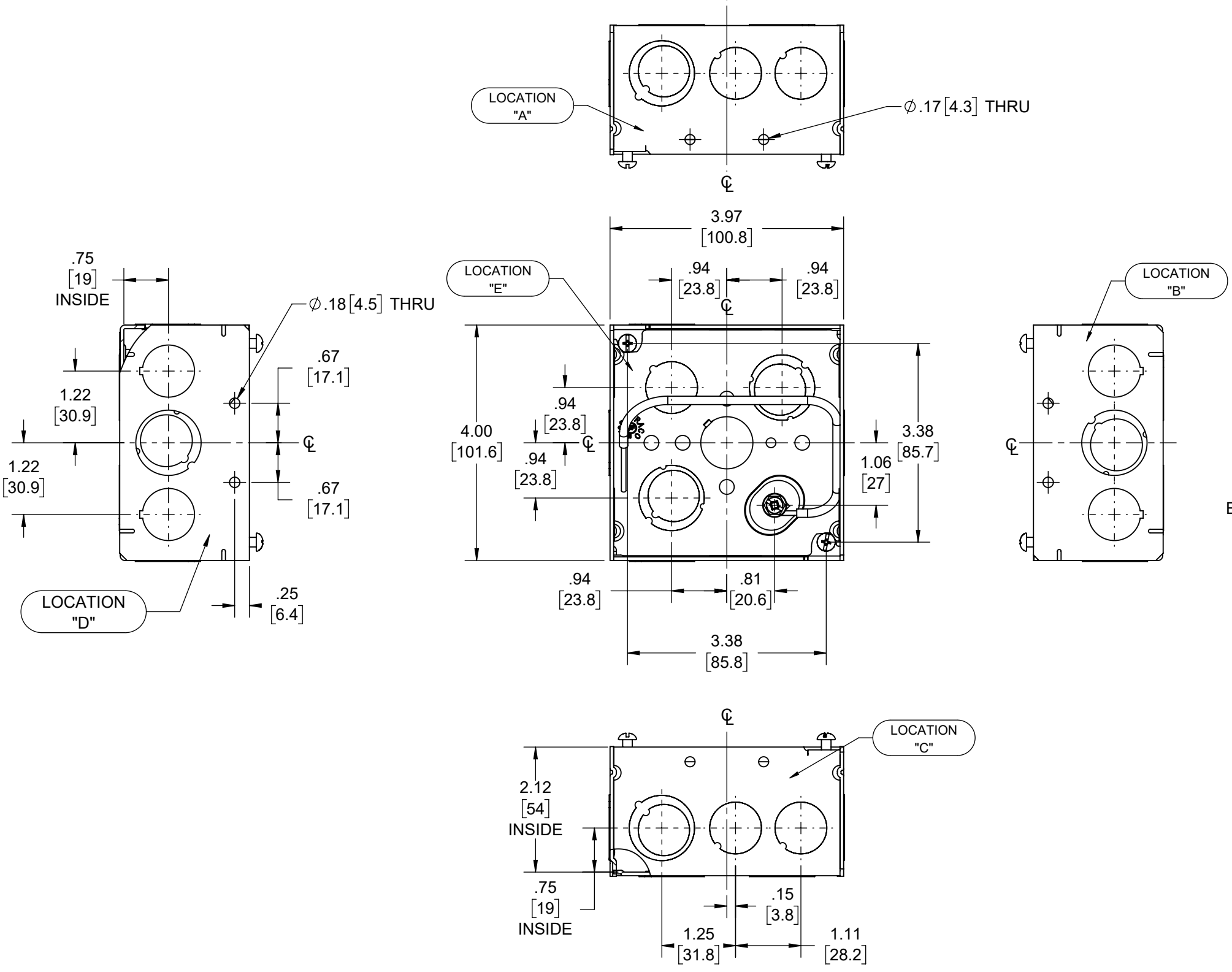


| REVISIONS | | | |
|-----------|----------|-----------------|-----|
| REV. | DATE | DESCRIPTION | BY |
| - | 10-28-21 | INITIAL RELEASE | RMV |



PIGTAIL:
WIRE: #12 AWG SOLID, 10-1/2" LONG, GREEN INSULATED, U.L. LISTED, 600 VOLT MAX;
EXTRA-GRIP RING TERMINAL, 16/12 AWG BRASS;
#10-32 X 3/8" GROUND SCREW W/COMBO HEX WASHER HEAD (SLOTTED, #2 PHILLIPS AND ROBERTSON)

| DESCRIPTION | MATERIAL | FINISH |
|-------------|----------|------------|
| PIG TAIL | COPPER | SEE NOTES |
| FASTENERS | STEEL | GALVANIZED |
| SIDE | STEEL | GALVANIZED |
| SPACER | STEEL | GALVANIZED |

LIST OF PARTS
THE DESIGN AND DIMENSIONS OF THE PRODUCT SHOWN ON THIS DRAWING ARE SUBJECT TO CHANGE WITHOUT NOTICE
TITLE:
4" SQ x 2-1/8" DEEP BOX WITH SOLID GROUND WIRE

| KNOCKOUTS | | |
|------------------|---------------|------|
| TRADE SIZE | LOCATION | QTY. |
| (1/2"-3/4") TKO® | A, B, C, D | 1 |
| (1/2"-3/4") TKO® | E | 2 |
| 1/2" KO | A, B, C, D, E | 2 |

| | | | | |
|--|---------------|----------------|---------------|------------|
| TOLERANCE UNLESS OTHERWISE SPECIFIED | | | SCALE: | SIZE: |
| .XX DECIMAL ±.015 .XXX DECIMAL ±.005 ANGLE ±2° | | | DRAWN BY: RMV | SCALE: 1:2 |
| | APP. BY: N.S. | DATE: 10-28-21 | | |

NOTES:
1. ALL DIMENSIONS ARE IN INCHES AND [MILLIMETERS]
2. BOX VOLUME: 30.3 IN³ [496.5 CM³]
3. cULus LISTED