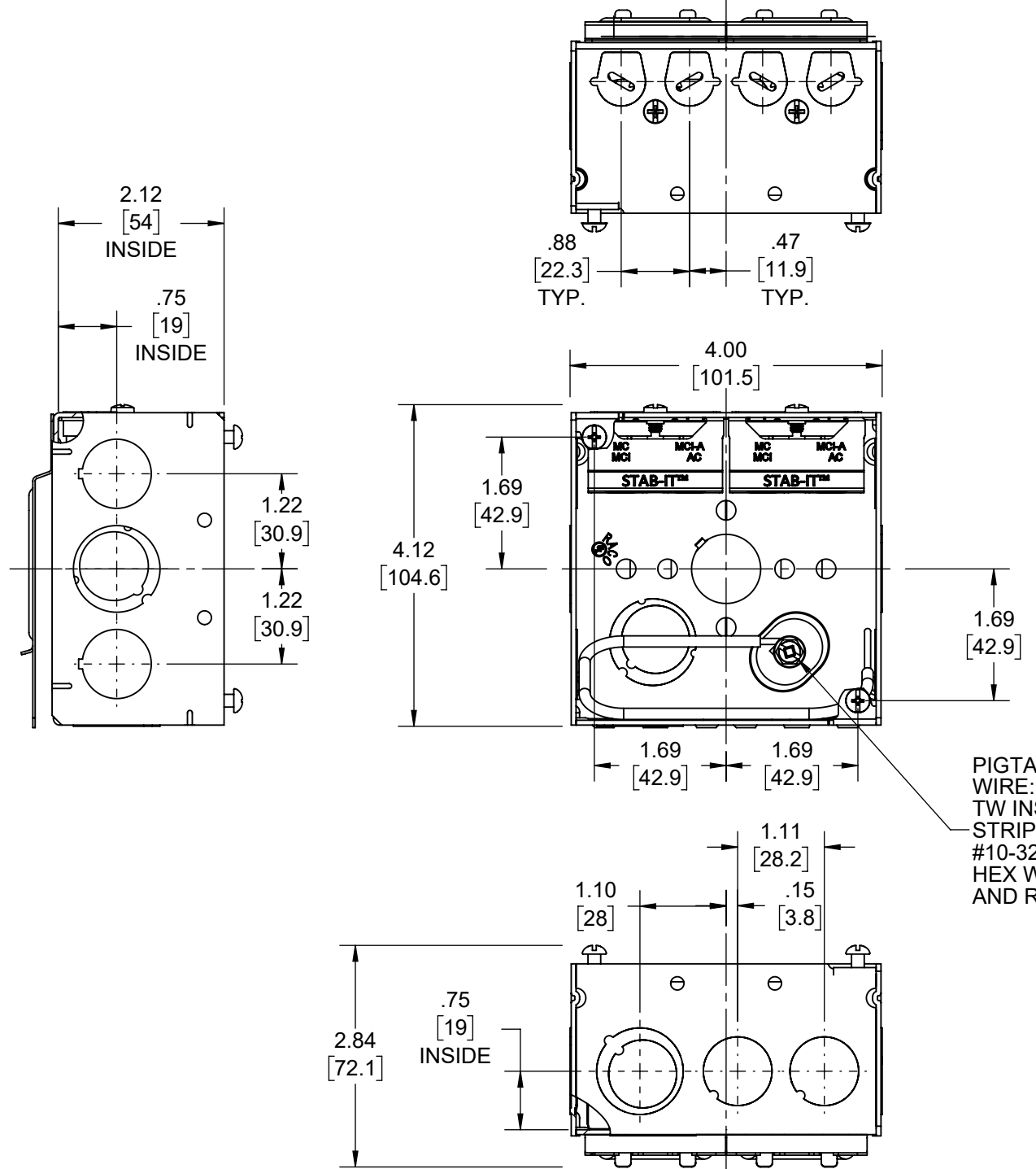
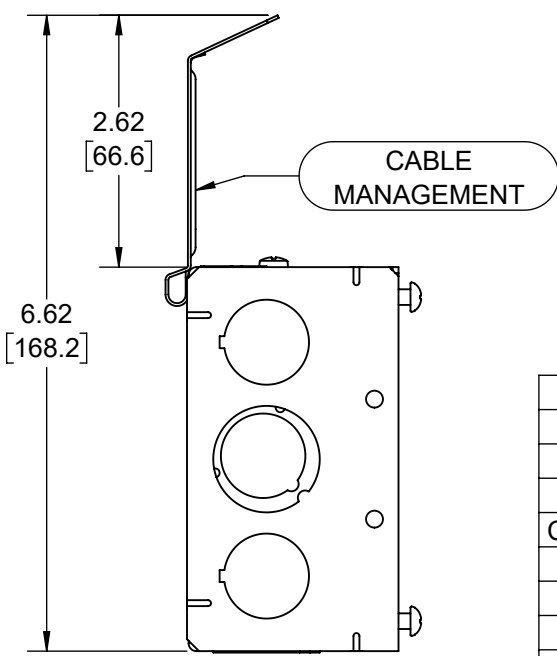
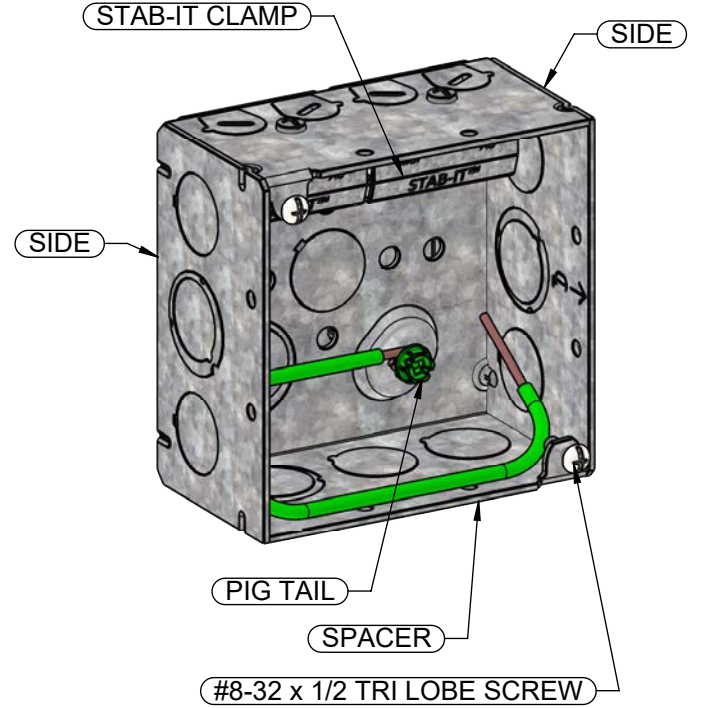
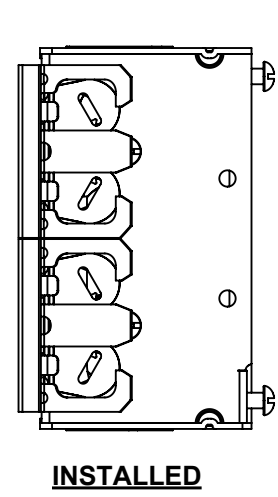


REVISIONS			
REV.	DATE	DESCRIPTION	BY
-	01-05-22	INITIAL RELEASE OF DRAWING	RMV



PIGTAIL:  
WIRE: #12 AWG SOLID, 8-1/2" LONG, GREEN TW INSULATED, U.L. LISTED, 600 VOLT MAX, STRIPPED 1" IN FROM EACH END;  
#10-32 X 3/8" GROUND SCREW W/COMBO HEX WASHER HEAD (SLOTTED, #2 PHILLIPS AND ROBERTSON)



- NOTES:  
1. ALL DIMENSIONS ARE IN INCHES AND [MILLIMETERS]  
2. BOX VOLUME: 30.3 IN<sup>3</sup> [496.5 CM<sup>3</sup>]  
3. UL LISTED

KNOCKOUTS	
TRADE SIZE	LOCATION
1/2" KO	1- ON THE BOTTOM (ACCESSIBLE FOR 5.5" & 6" STUDS ONLY), 2-ON EACH SIDE, 2 -ON THE SIDE OF THE SPACER
1/2", 3/4" TKO®	1- ON THE BOTTOM (ACCESSIBLE FOR 5.5" & 6" STUDS ONLY), 1-ON EACH SIDE, 1-ON THE SIDE OF THE SPACER
CABLE PRIOUTS	2- ON THE SIDE OF THE SPACER

CABLE TYPES AND RANGES FOR STAB-IT CLAMP	
CABLE TYPES	CABLE RANGES
AC STEEL & ALUMINUM	14-2,14-3,14-4,12-2,12-3,12-4,10-2,10-3
HCF AC STEEL	14-2,14-3,14-4,12-2,12-3,10-2,10-3
HCF AC ALMINUM	12-2,12-3,12-4,10-2,10-3
MC STEEL & ALUMINIUM	14-2,14-3,14-4,12-2,12-3,12-4,10-2,10-3
MCI-A STEEL & ALUMINIUM	14-2,14-3,14-4,12-2,12-3,12-4,10-2,10-3
HCF MCI-A STEEL	12-2,12-3,10-2
HCF MCI-A ALUMINIUM	14-2,14-3,14-4,12-2,12-3,12-4,10-2,10-3
3/8 TRADE SIZE FLEX,REFMC CONDUIT STEEL & ALUMINUM. ANTI SHORT BUSHING REQUIRED	
CABLE RANGE .400" DIA. MIN TO .605" DIA. MAX	

DESCRIPTION	MATERIAL	FINISH
PIGTAIL	COPPER	
STAB-IT CLAMP	STEEL	GALVANIZED
CABLE MANAGEMENT	STEEL	GALVANIZED
STUD BRACKET	STEEL	GALVANIZED
FASTENERS	STEEL	GALVANIZED
SIDE	STEEL	GALVANIZED
SPACER	STEEL	GALVANIZED

LIST OF PARTS  
THE DESIGN AND DIMENSIONS OF THE PRODUCT SHOWN ON THIS DRAWING ARE SUBJECT TO CHANGE WITHOUT NOTICE

TITLE:  
**4" SQ BOX W/ 2 STAB-IT™ CLAMPS & CABLES SUPPORT BRACKET**

TOLERANCE UNLESS OTHERWISE SPECIFIED			DRAWN BY: RMV	SCALE: 1:2
.XX DECIMAL ±.015 .XXX DECIMAL ±.005 ANGLE ±2°			APP. BY: N.S.	DATE: 01-05-22

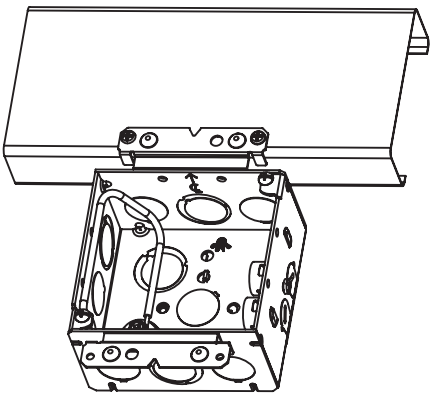
NOTE:  
FOR INSTRUCTION SHEETS,  
SCROLL DOWN TO SHEET 2 & 3

SIZE:  
**B**

# Instructions for using the RACO® Cable Support Bracket with STAB-IT® Boxes

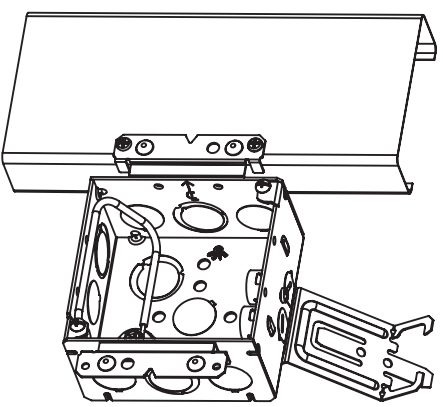
## Step 1.

Install box to the stud. For instructions for Flip Up far side support see 119030\_RA-356 Instr.



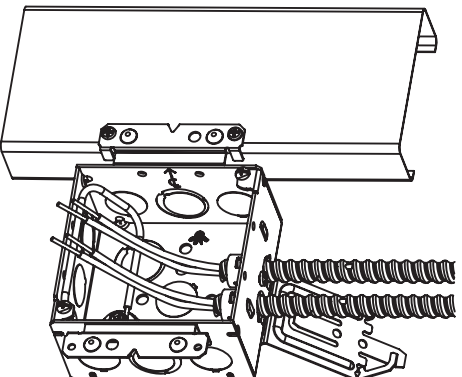
## Step 2.

Pre-bend Cable Support Bracket as shown

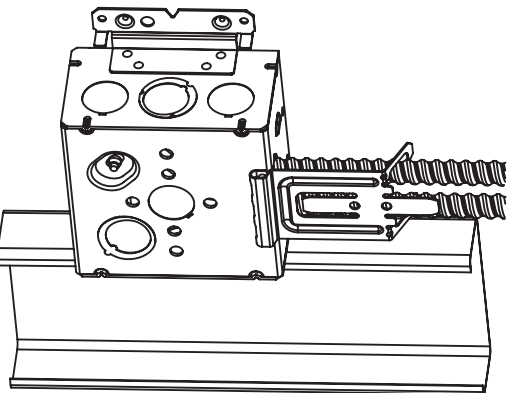


## Step 3.

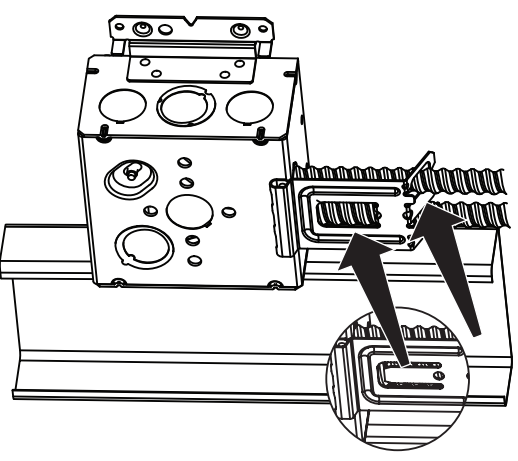
Remove pry-outs and install cables



## Step 4. Bend Cable Support Bracket as shown.



## Step 5. Bend up/down center tab.



3902 W. Sample St., South Bend, IN 46634  
Phone: (574) 234-7151 FAX (574) 283-4244

MADE IN CHINA  
RA-358 Instr  
119031