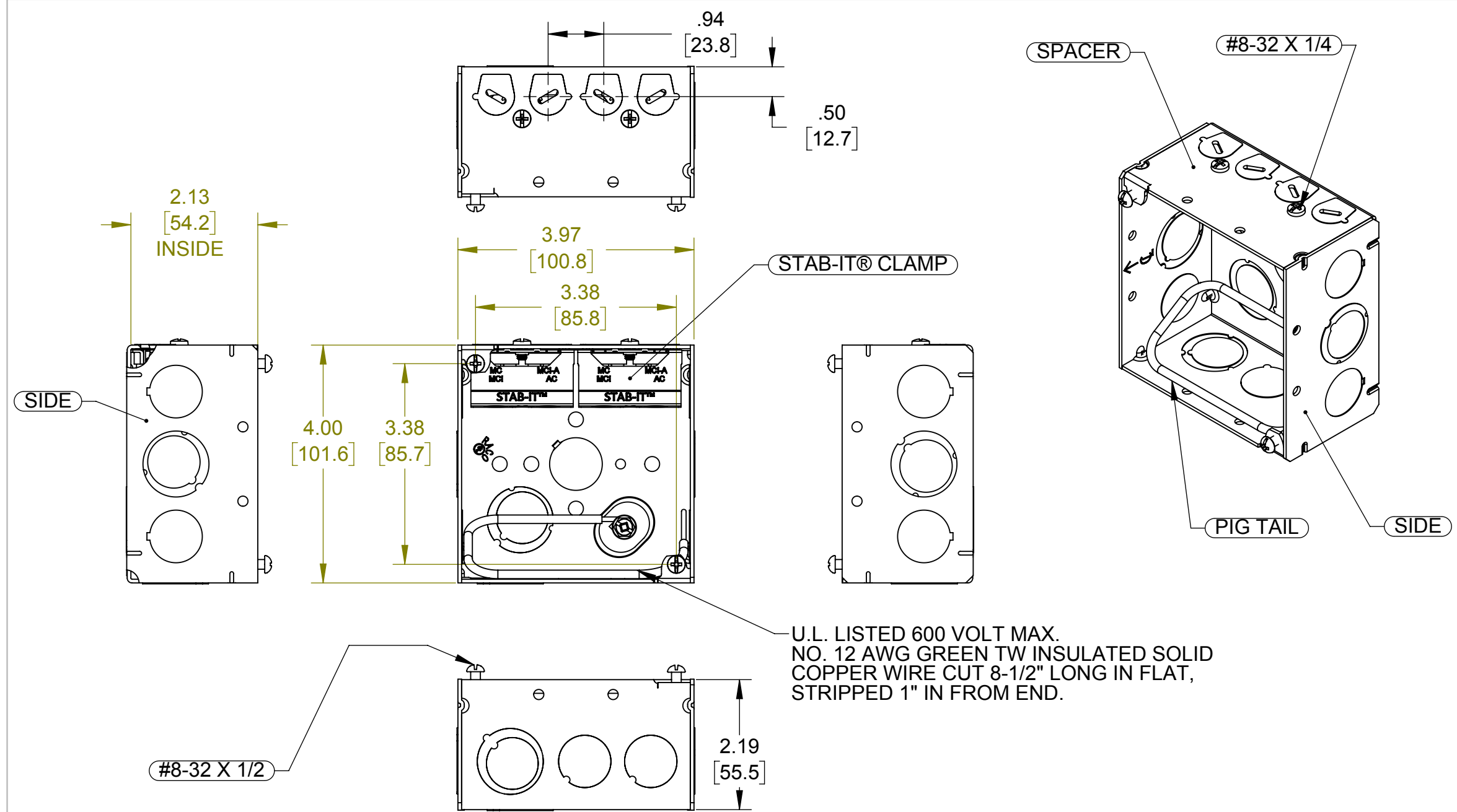


LIST OF PARTS

| DESCRIPTION | MATERIAL | FINISH |
|----------------|----------|------------|
| SPACER | STEEL | GALVANIZED |
| SIDES | STEEL | GALVANIZED |
| PIG TAIL | COPPER | SEE NOTE |
| FASTENERS | STEEL | GALVANIZED |
| STAB-IT® CLAMP | STEEL | GALVANIZED |
| | | |
| | | |
| | | |



U.L. LISTED 600 VOLT MAX.
NO. 12 AWG GREEN TW INSULATED SOLID
COPPER WIRE CUT 8-1/2" LONG IN FLAT,
STRIPPED 1" IN FROM END.

- NOTES:**
1. ALL DIMENSIONS ARE IN INCHES AND [MILLIMETERS]
 2. BOX VOLUME: 30.3 IN³ [496.5 CM³]
 3. UL LISTED

| KNOCKOUTS | |
|-----------------|--|
| TRADE SIZE | LOCATION |
| 1/2" KO | 1- ON BACK SIDE, 2-ON EACH SIDE, 2 ON BOTTOM |
| 1/2", 3/4" TKO® | 1-ON EACH SIDE, 1 ON BOTTOM, 1 ON BACK |

| CABLE TYPES AND RANGES FOR STAB-IT CLAMP | |
|---|---|
| CABLE TYPES | CABLE RANGES |
| AC STEEL & ALUMINUM | 14-2,14-3,14-4,12-2,12-3,12-4,10-2,10-3 |
| HCF AC STEEL | 14-2,14-3,14-4,12-2,12-3,10-2,10-3 |
| HCF AC ALUMINUM | 12-2,12-3,12-4,10-2,10-3 |
| MC STEEL & ALUMINIUM | 14-2,14-3,14-4,12-2,12-3,12-4,10-2,10-3 |
| MCI-A STEEL & ALUMINIUM | 14-2,14-3,14-4,12-2,12-3,12-4,10-2,10-3 |
| HCF MCI-A STEEL | 12-2,12-3,10-2 |
| HCF MCI-A ALUMINIUM | 14-2,14-3,14-4,12-2,12-3,12-4,10-2,10-3 |
| 3/8 TRADE SIZE FLEX,REFMC CONDUIT STEEL & ALUMINUM. ANTI SHORT BUSHING REQUIRED | |
| CABLE RANGE .400" DIA. MIN TO .605" DIA. MAX | |

| | | |
|-----------------|----------------------|----------|
| INITIAL RELEASE | N.S. | 10-10-16 |
| SYM. | REVISION DESCRIPTION | APP DATE |

THE DESIGN AND DIMENSIONS OF THE PRODUCT SHOWN ON THIS DRAWING ARE SUBJECT TO CHANGE WITHOUT NOTICE

TITLE: **4" SQ. 2-1/8" DEEP WELDED BOX WITH 2 STAB-IT® CLAMPS AND PIG TAIL**

| | | |
|--|------------------------------------|------------|
| TOLERANCE UNLESS OTHERWISE SPECIFIED .XX DECIMAL ±.015 .XXX DECIMAL ±.005 ANGLE ±2° | RACO South Bend, Indiana | |
| | DRAWN BY: K.K. | SCALE: 1:2 |
| | APP. BY: N.S. | |
| | DATE: 10-10-16 | |