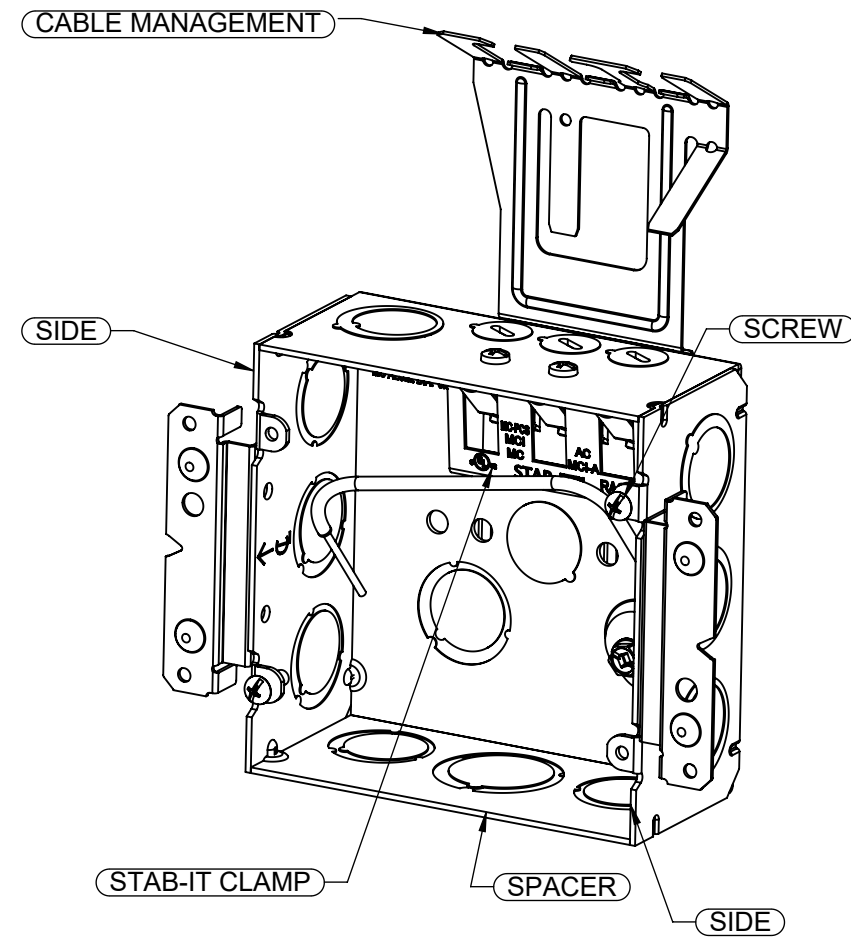
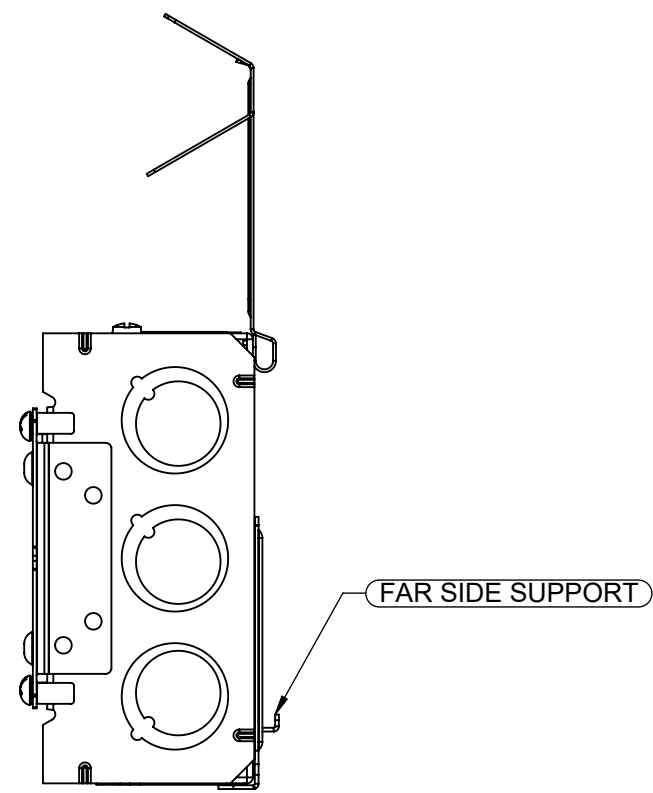
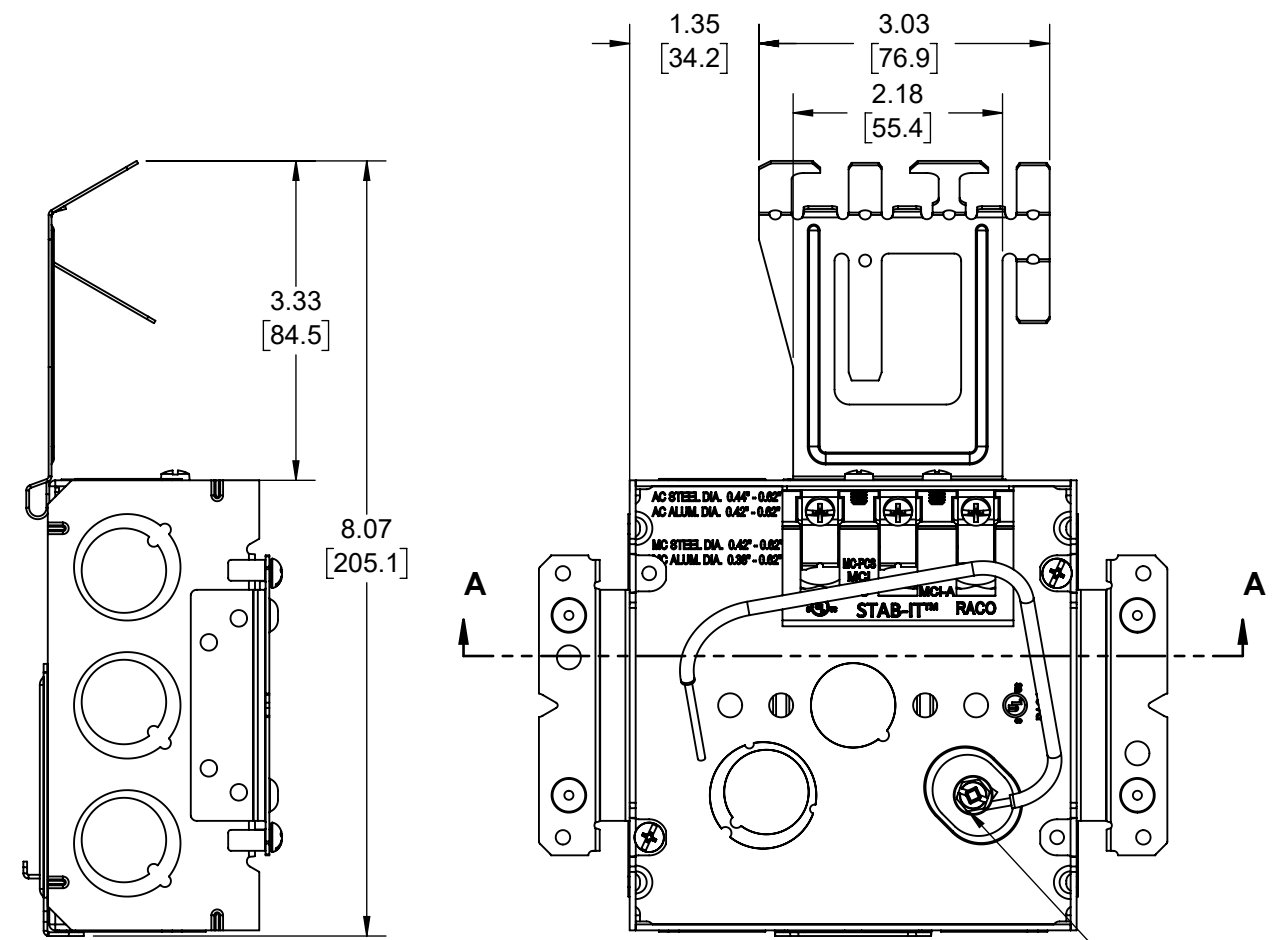
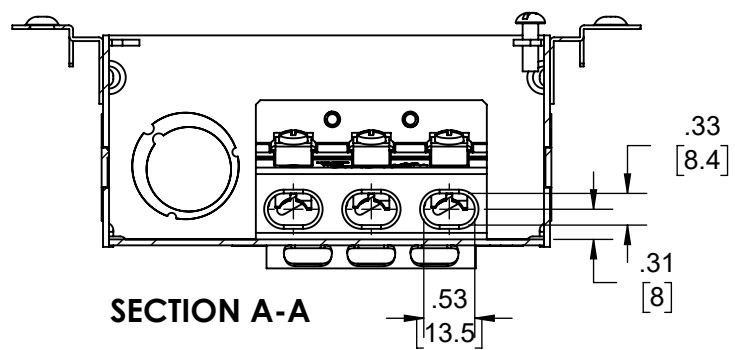


| REVISIONS | | | |
|-----------|----------|--------------------|-----|
| REV. | DATE | DESCRIPTION | BY: |
| - | 06-06-19 | INITIAL RELEASE | DL |
| 1 | 10-29-20 | UPDATED CM BRACKET | RMV |



PIGTAIL:
WIRE: #12 AWG SOLID, 8-1/2" LONG, GREEN TW
INSULATED, U.L. LISTED, 600 VOLT MAX,
STRIPPED 1" IN FROM EACH END;
#10-32 X 3/8" GROUND SCREW W/COMBO HEX
WASHER HEAD (SLOTTED, #2 PHILLIPS AND
ROBERTSON)



- NOTES:
1. ALL DIMENSIONS ARE IN INCHES AND [MILLIMETERS]
 2. BOX VOLUME: 42.0 IN³ [688.3 CM³]
 3. cULus LISTED
 4. SEE SHEET 2 FOR FURTHER BOX DETAILS

NOTE:
FOR INSTRUCTION SHEETS,
SEE ADDITIONAL SHEETS

| CABLE TYPES AND RANGES FOR STAB-IT II CLAMP | |
|--|--|
| CABLE TYPES | CABLE RANGES |
| MC-PCS STEEL & ALUMINUM | 12-2/16-2, 12-3/16-2, 10-2/16-2 |
| AC STEEL & ALUMINUM | 14-2, 14-3, 14-4, 12-2, 12-3, 12-4, 10-2, 10-3 |
| HCF AC STEEL | 12-2, 12-3, 10-2, 10-3 |
| HCF AC ALUMINUM | 12-2, 12-3, 12-4, 10-2, 10-3 |
| MC STEEL & ALUMINIUM | 14-2, 14-3, 14-4, 12-2, 12-3, 12-4, 10-2, 10-3 |
| MCI-A ALUMINIUM | 14-2, 14-3, 14-4, 12-2, 12-3, 12-4, 10-2, 10-3 |
| MCI-A STEEL | 14-2, 12-2, 12-3, 12-4, 10-2, 10-3 |
| HCF MCI-A STEEL | 12-2, 12-3, 10-2 |
| HCF MCI-A ALUMINIUM | 12-2, 12-3, 12-4, 10-2, 10-3 |
| 3/8 TRADE SIZE FLEX, REFMC CONDUIT STEEL & ALUMINUM. ANTI SHORT BUSHING REQUIRED | |
| CABLE RANGE ..380" DIA. MIN TO .620" DIA. MAX | |

| DESCRIPTION | MATERIAL | FINISH |
|------------------|----------|-------------|
| PIG TAIL | COPPER | SEE DRAWING |
| STAB-IT CLAMP | STEEL | GALVANIZED |
| FAR SIDE SUPPORT | STEEL | GALVANIZED |
| CABLE MANAGEMENT | STEEL | GALVANIZED |
| STUD BRACKET | STEEL | GALVANIZED |
| FASTENERS | STEEL | GALVANIZED |
| SIDE | STEEL | GALVANIZED |
| SPACER | STEEL | GALVANIZED |

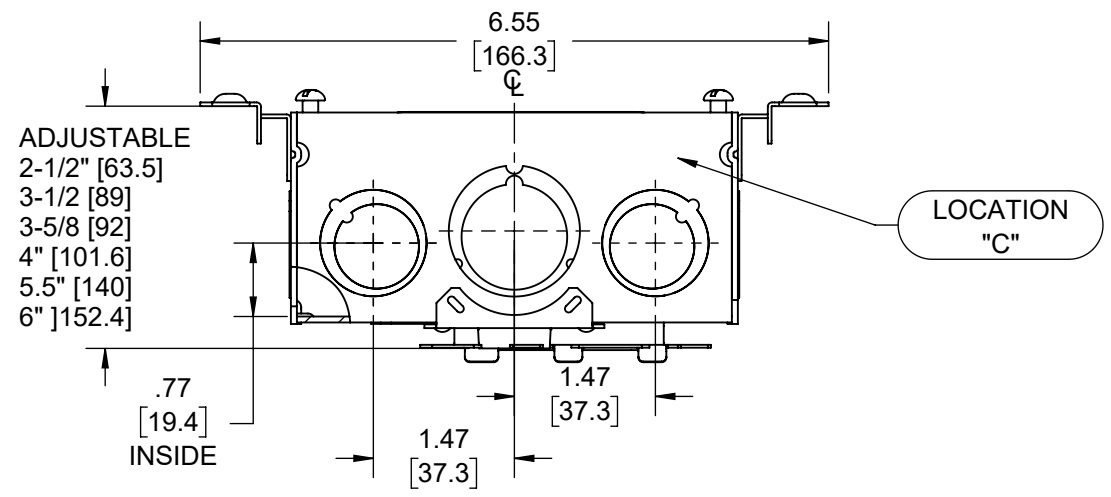
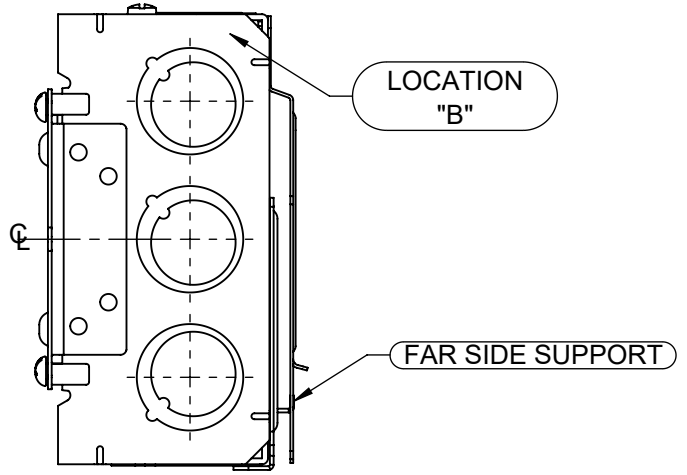
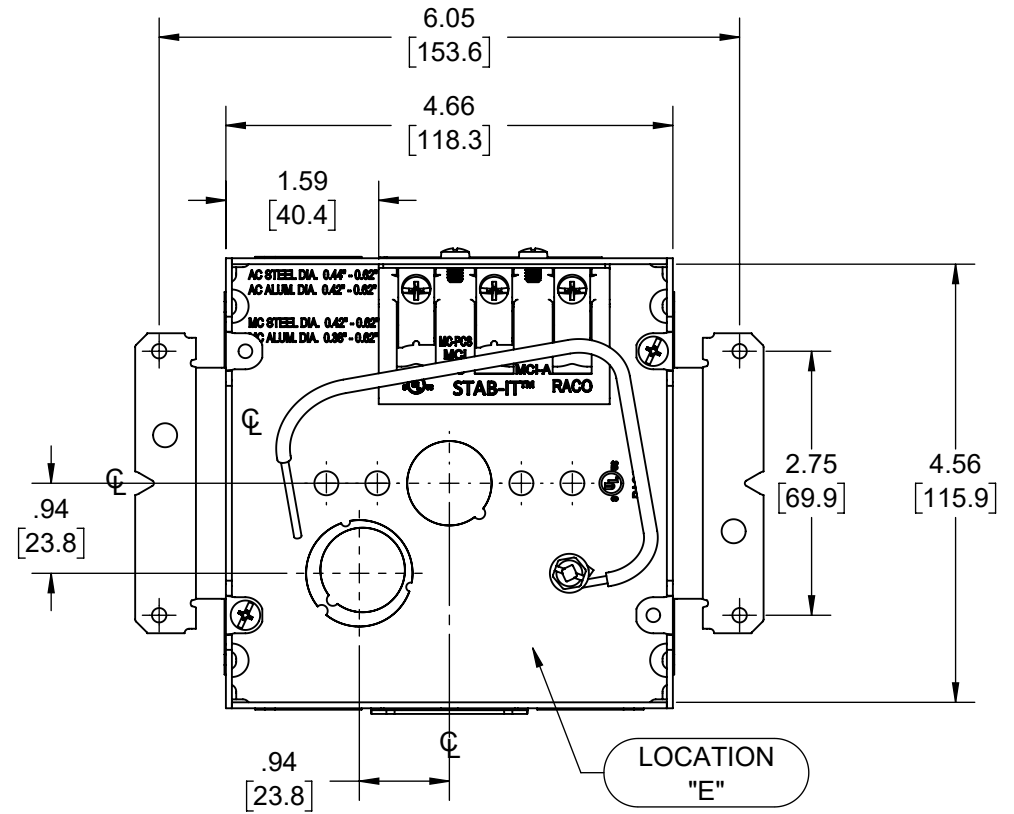
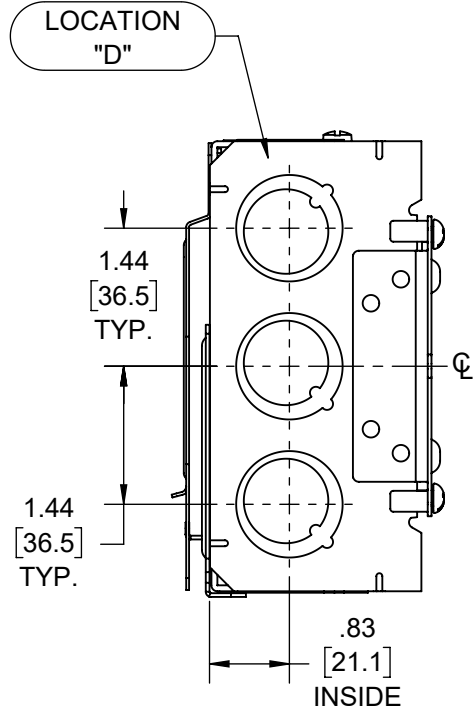
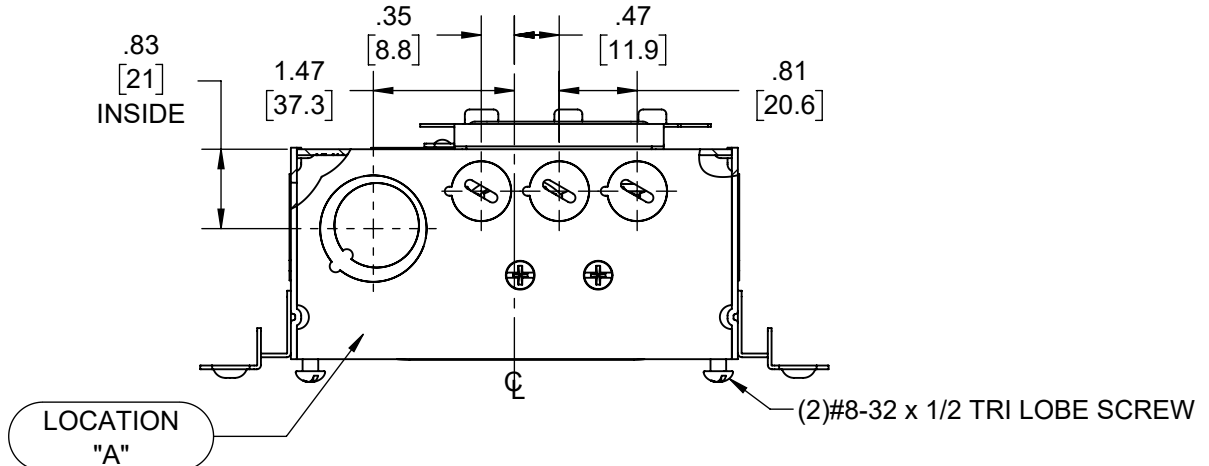
LIST OF PARTS

THE DESIGN AND DIMENSIONS OF THE PRODUCT SHOWN ON THIS DRAWING ARE SUBJECT TO CHANGE WITHOUT NOTICE

TITLE:
4-11/16" SQ. X 2-1/8" DP. W/ STAB-IT II™ & CABLE MANAGEMENT BRACKET

| | | | | |
|--|--|--|----------------|----------------|
| TOLERANCE UNLESS OTHERWISE SPECIFIED | | | DRAWN BY: DL | SCALE: 1:2 |
| .XX DECIMAL ±.015 .XXX DECIMAL ±.005 ANGLE ±2° | | | APP. BY: N.S. | DATE: 06-06-19 |
| | | | SIZE: B | 11/11 |

| REVISIONS | | | |
|-----------|----------|--------------------|-----|
| REV. | DATE | DESCRIPTION | BY: |
| - | 06-06-19 | INITIAL RELEASE | DL |
| 1 | 10-29-20 | UPDATED CM BRACKET | RMV |



NOTE:
FOR INSTRUCTION SHEETS,
SEE ADDITIONAL SHEETS

- NOTES:
1. ALL DIMENSIONS ARE IN INCHES AND [MILLIMETERS]
 2. BOX VOLUME: 42.0 IN³ [688.3 CM³]
 3. cULus LISTED

THE DESIGN AND DIMENSIONS OF THE
PRODUCT SHOWN ON THIS DRAWING ARE
SUBJECT TO CHANGE WITHOUT NOTICE

TITLE:
**4-11/16" SQ. X 2-1/8" DP. W/ STAB-IT
II™ & CABLE MANAGEMENT BRACKET**

| KNOCKOUTS | | |
|------------------|----------|------|
| TRADE SIZE | LOCATION | QTY. |
| (1/2"-3/4") TKO® | B, D, | 3 |
| (1/2"-3/4") TKO® | C | 2 |
| (1/2"-3/4") TKO® | A,E | 1 |
| (3/4"-1") TKO® | C | 1 |
| 1/2" KO | E | 1 |

TOLERANCE UNLESS
OTHERWISE SPECIFIED
.XX DECIMAL ±.015
.XXX DECIMAL ±.005
ANGLE ±2°



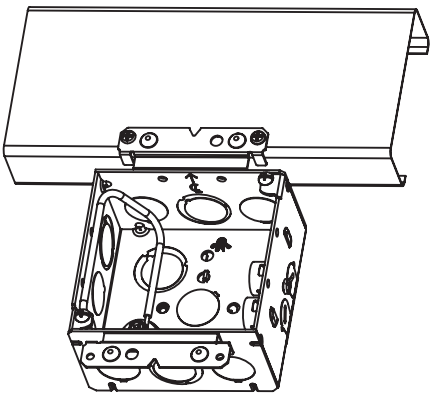
DRAWN BY: DL
APP. BY: N.S.
DATE: 06-06-19

SCALE: 1:2
SIZE: B

Instructions for using the RACO® Cable Support Bracket with STAB-IT® Boxes

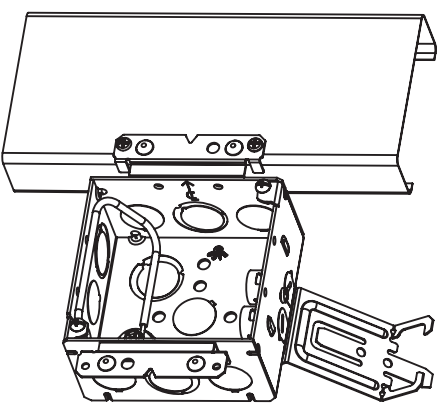
Step 1.

Install box to the stud. For instructions for Flip Up far side support see 119030_RA-356 Instr.



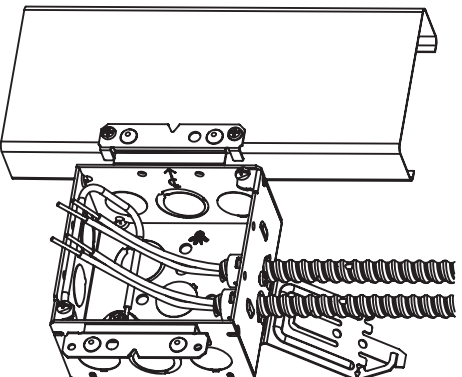
Step 2.

Pre-bend Cable Support Bracket as shown

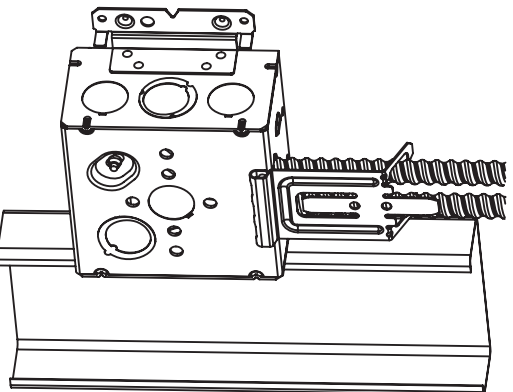


Step 3.

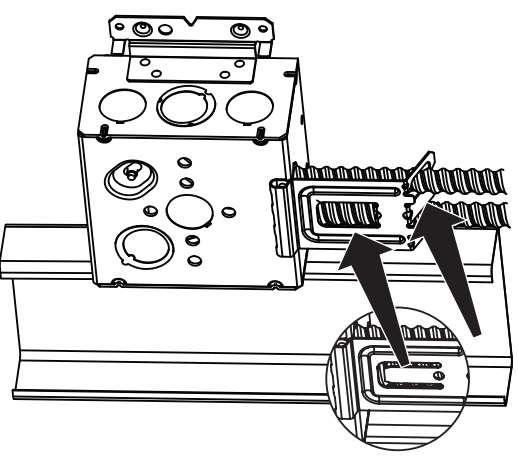
Remove pry-outs and install cables



Step 4. Bend Cable Support Bracket as shown.



Step 5. Bend up/down center tab.

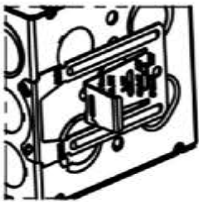


3902 W. Sample St., South Bend, IN 46634
Phone: (574) 234-7151 FAX (574) 283-4244

MADE IN CHINA
RA-358 Instr
119031

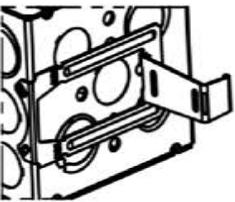
Instructions for using the RACO® Universal Box Stabilizer

1-1/2" Deep Boxes



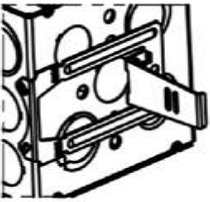
Bend center tab as shown

For 2-1/2" deep studs



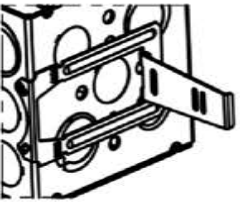
Bend center tab as shown - 2 places

For 3-1/2" deep studs



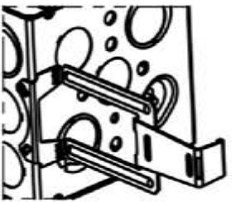
Bend center tab as shown

For 3-5/8" deep studs



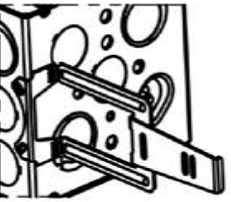
Bend center tab as shown

For 4" deep studs



Bend both tabs as shown

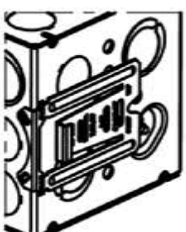
For 5-1/2" deep studs



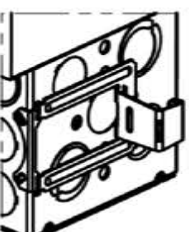
Bend both tabs as shown

For 6" deep studs

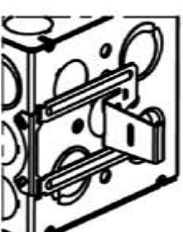
2-1/8" Deep Boxes



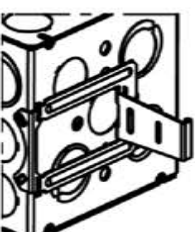
Comes preset



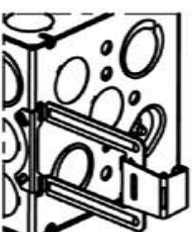
Bend center tab as shown - 2 places



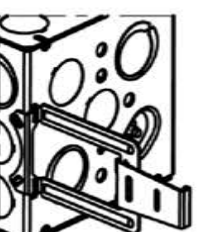
Bend center tab as shown



Bend center tab as shown



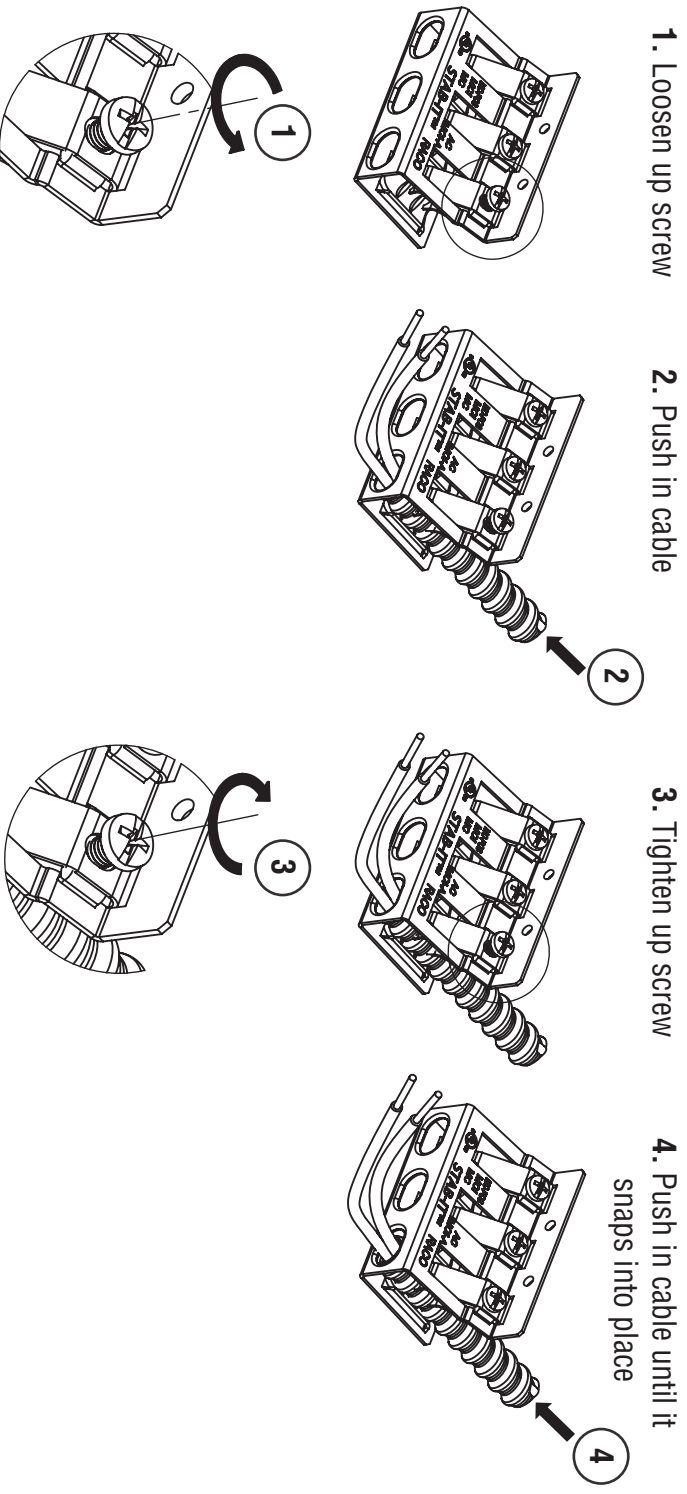
Bend both tabs as shown



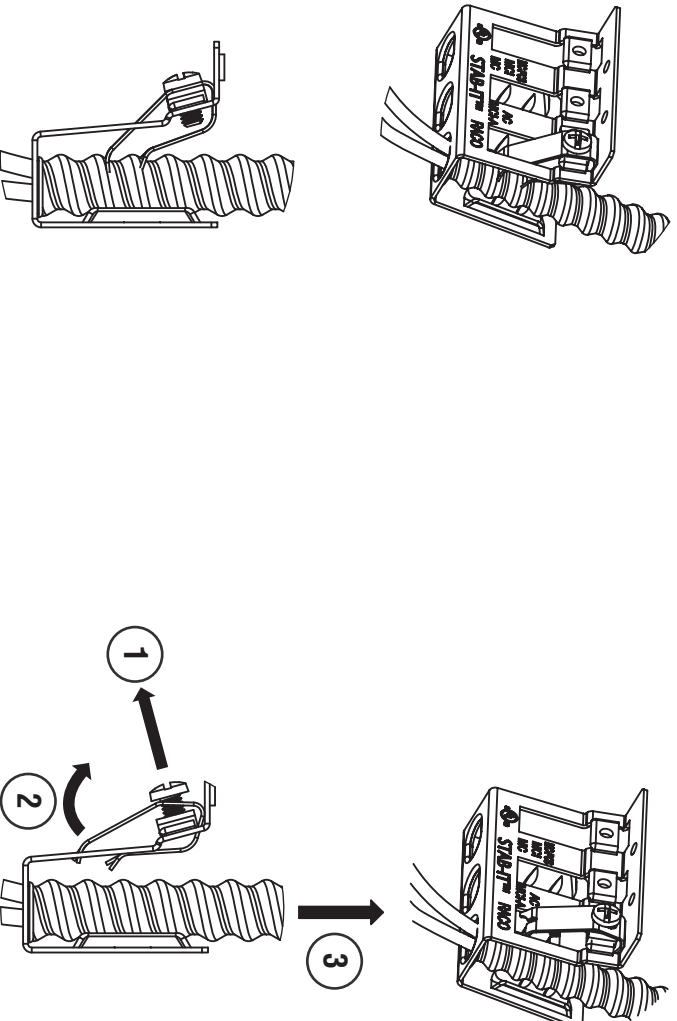
Bend both tabs as shown

NOTICE: Bottom knockouts are NOT usable with the FS support.

Alternate instructions for installing larger diameter cables in RACO® STAB-IT® II boxes (if needed)



Instructions for removing cables from RACO® STAB-IT® II boxes



1. Loosen screw
2. Pull the spring clip away from cable as shown
3. Pull cable out



Hubbell Commercial Construction
Hubbell Incorporated (Delaware)

RACO INC.
3902 W. Sample St. P.O. Box 4002 South Bend, IN 46634
Phone: (574) 234-7151 FAX (574) 283-4244

MADE IN CHINA
RA-Instr 348 rev2
400704