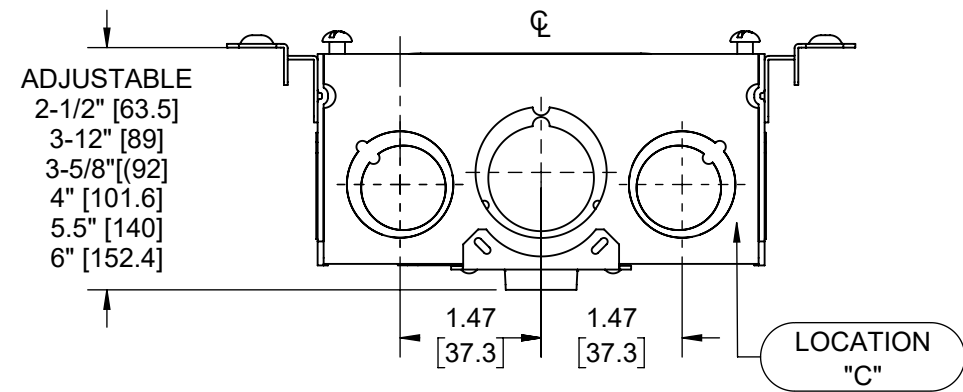
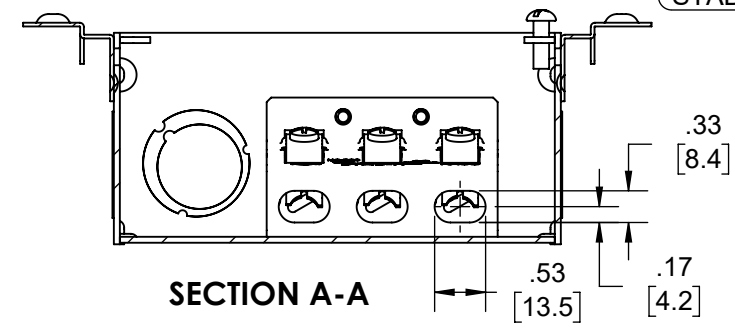
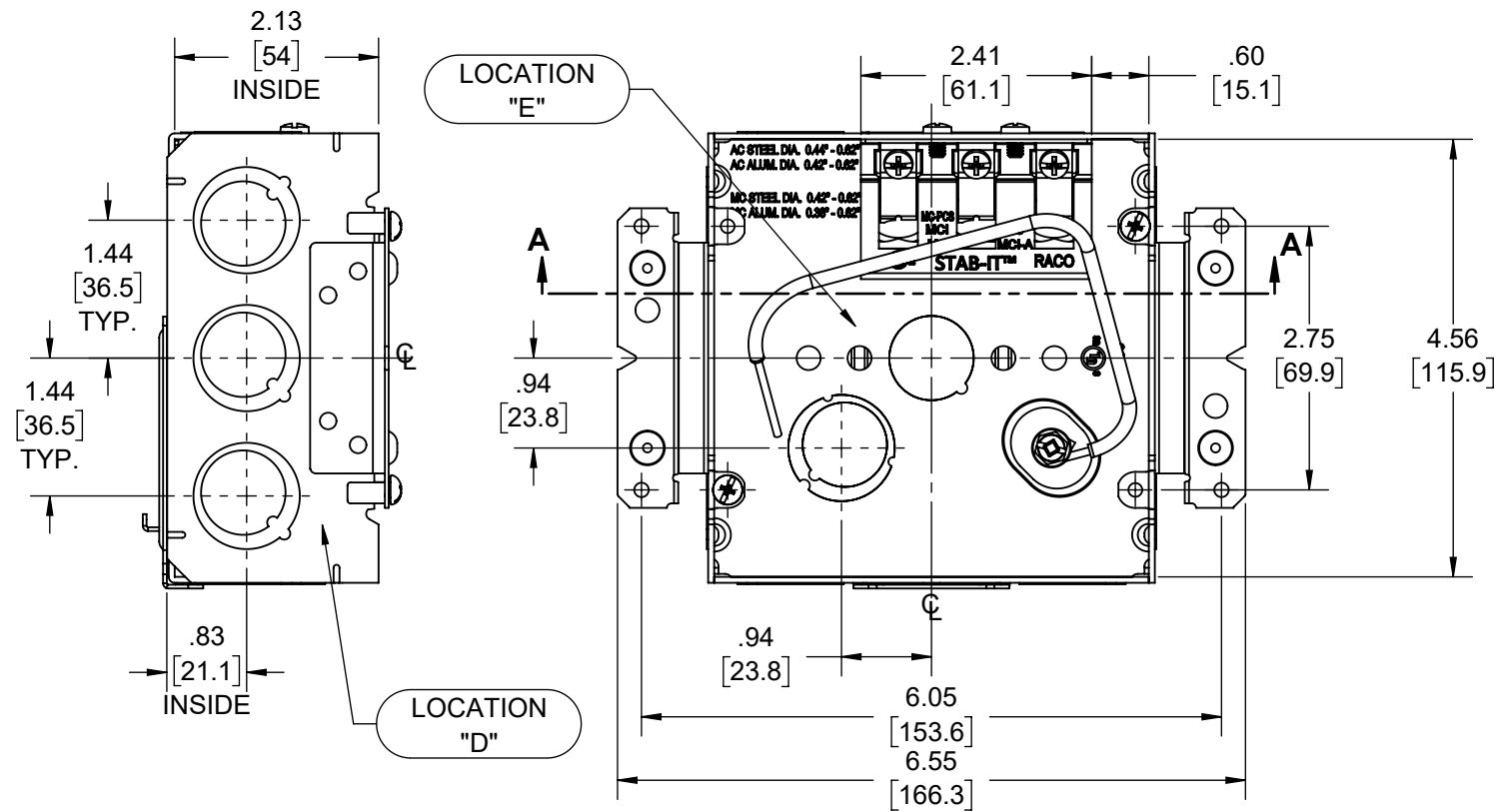
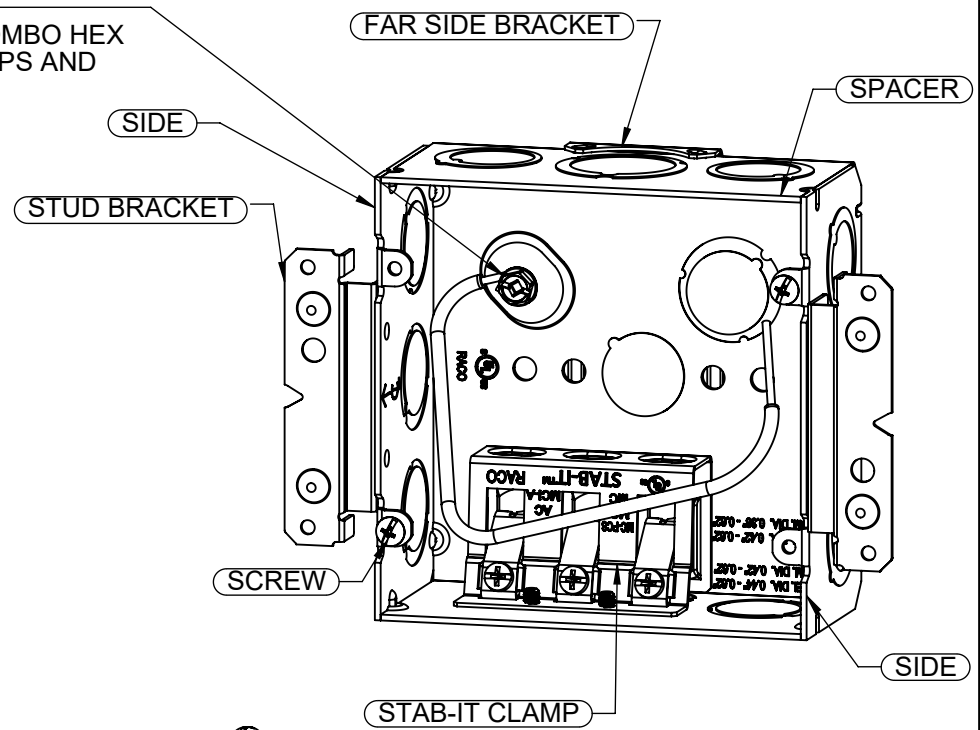
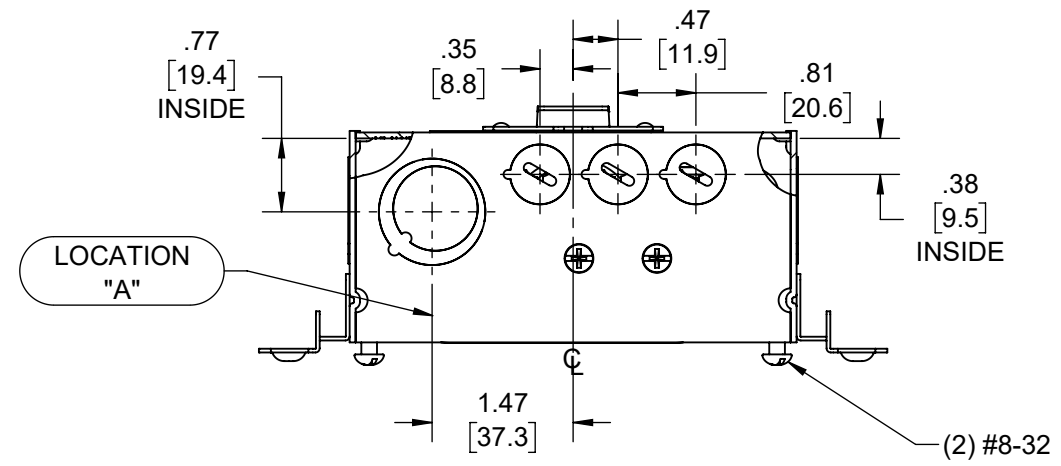


REVISIONS			
REV.	DATE	DESCRIPTION	BY:
-	06-06-19	INITIAL RELEASE	DL

PIGTAIL:
 WIRE: #12 AWG SOLID, 8-1/2" LONG, GREEN TW
 INSULATED, U.L. LISTED, 600 VOLT MAX,
 STRIPPED 1" IN FROM EACH END;
 #10-32 X 3/8" GROUND SCREW W/COMBO HEX
 WASHER HEAD (SLOTTED, #2 PHILLIPS AND
 ROBERTSON)



CABLE TYPES AND RANGES FOR STAB-IT CLAMP	
CABLE TYPES	CABLE RANGES
MC-PCS STEEL & ALUMINUM	12-2/16-2, 12-3/16-2, 10-2/16-2
AC STEEL & ALUMINUM	14-2, 14-3, 14-4, 12-2, 12-3, 12-4, 10-2, 10-3
HCF AC STEEL	12-2, 12-3, 10-2, 10-3
HCF AC ALUMINUM	12-2, 12-3, 12-4, 10-2, 10-3
MC STEEL & ALUMINIUM	14-2, 14-3, 14-4, 12-2, 12-3, 12-4, 10-2, 10-3
MCI-A ALUMINIUM	14-2, 14-3, 14-4, 12-2, 12-3, 12-4, 10-2, 10-3
MCI-A STEEL	14-2, 12-2, 12-3, 12-4, 10-2, 10-3
HCF MCI-A STEEL	12-2, 12-3, 10-2
HCF MCI-A ALUMINIUM	12-2, 12-3, 12-4, 10-2, 10-3
3/8 TRADE SIZE FLEX, REFMC CONDUIT STEEL & ALUMINUM. ANTI SHORT BUSHING REQUIRED	
CABLE RANGE .380" DIA. MIN TO .620" DIA. MAX	

DESCRIPTION	MATERIAL	FINISH
FAR SIDE BRACKET	STEEL	GALVANIZED
STUD BRACKETS	STEEL	GALVANIZED
PIG TAIL	COPPER	
STAB-IT CLAMPS	STEEL	GALVANIZED
FASTENERS	STEEL	GALVANIZED
SIDE	STEEL	GALVANIZED
SPACER	STEEL	GALVANIZED

LIST OF PARTS

THE DESIGN AND DIMENSIONS OF THE PRODUCT SHOWN ON THIS DRAWING ARE SUBJECT TO CHANGE WITHOUT NOTICE

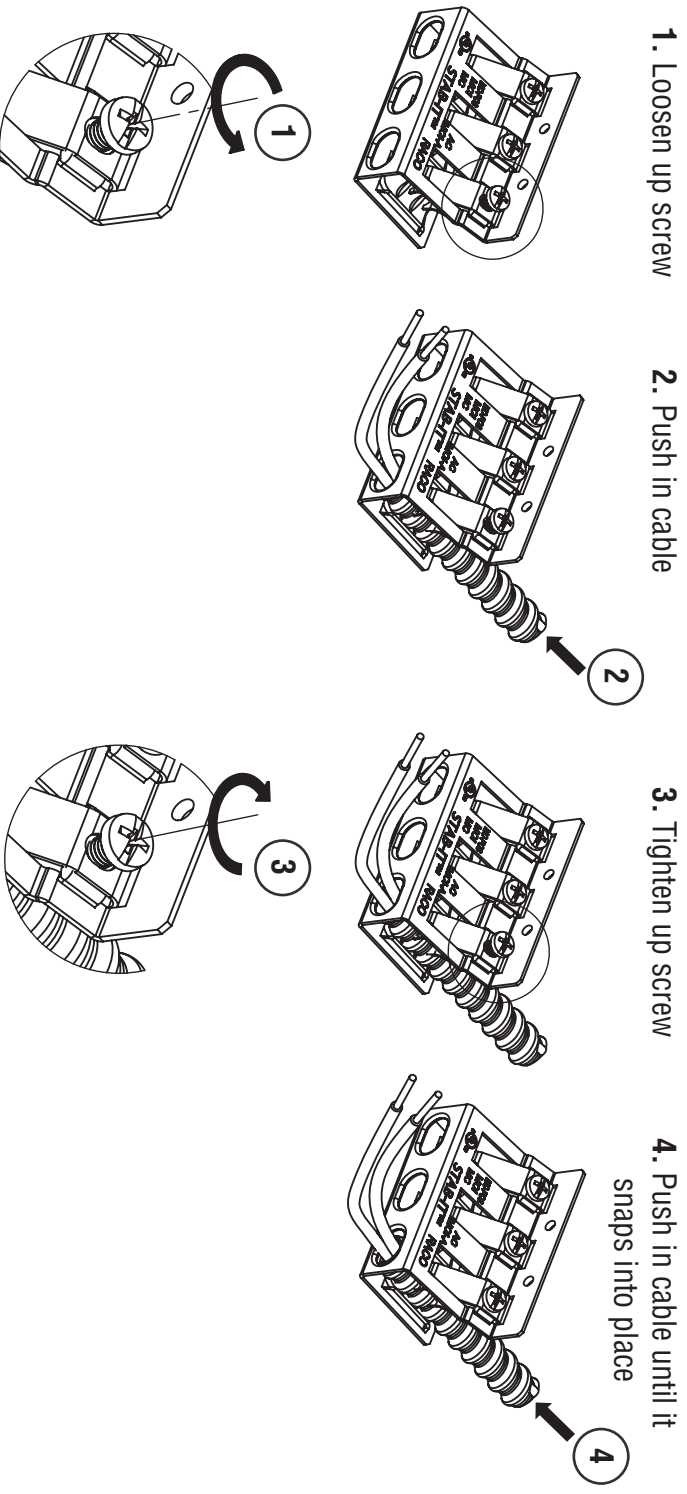
TITLE: **4-11/16" SQ. X 2-1/8" DP. W/ STAB-IT II™**

KNOCKOUTS		
TRADE SIZE	LOCATION	QTY.
(1/2"-3/4") TKO®	B, D	3
(1/2"-3/4") TKO®	C	2
(1/2"-3/4") TKO®	A, E	1
(3/4"-1") TKO®	C	1
1/2" KO	E	1

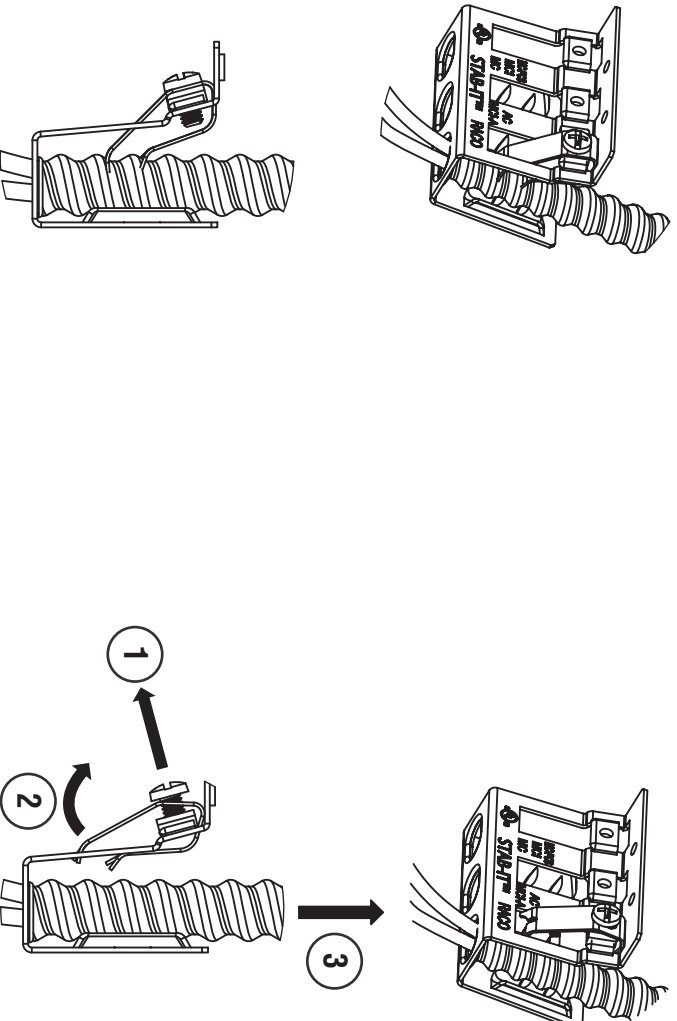
NOTES:
 1. ALL DIMENSIONS ARE IN INCHES AND [MILLIMETERS]
 2. BOX VOLUME: 42.0 IN³ [688.3 CM³]
 3. cULus LISTED
 4. FOR INSTRUCTION SHEET SCROLL DOWN TO NEXT SHEET

TOLERANCE UNLESS OTHERWISE SPECIFIED .XX DECIMAL ±.015 .XXX DECIMAL ±.005 ANGLE ±2°			DRAWN BY: DL	SCALE: SIZE:
			APP. BY: N.S.	1:2
			DATE: 06-06-19	

Alternate instructions for installing larger diameter cables in RACO® STAB-IT® II boxes (if needed)



Instructions for removing cables from RACO® STAB-IT® II boxes



1. Loosen screw
2. Pull the spring clip away from cable as shown
3. Pull cable out



Hubbell Commercial Construction
Hubbell Incorporated (Delaware)

RACO INC.

3902 W. Sample St. P.O. Box 4002 South Bend, IN 46634
Phone: (574) 234-7151 FAX (574) 283-4244

MADE IN CHINA

RA-Inst 348 rev2
400704

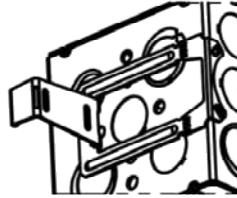
Instructions for using the RACO® Universal Box Stabilizer

1-1/2" Deep Boxes



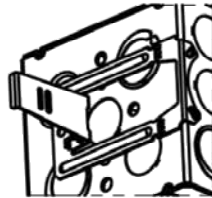
Bend center tab as shown

For 2-1/2" deep studs



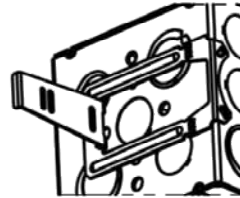
Bend center tab as shown - 2 places

For 3-1/2" deep studs



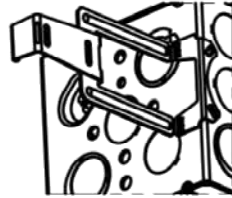
Bend center tab as shown

For 3-5/8" deep studs



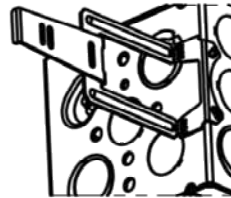
Bend center tab as shown

For 4" deep studs



Bend both tabs as shown

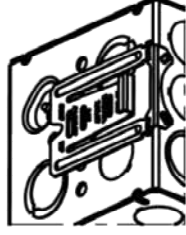
For 5-1/2" deep studs



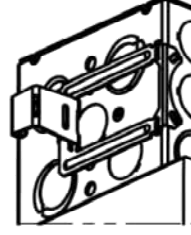
Bend both tabs as shown

For 6" deep studs

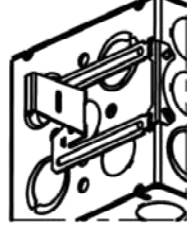
2-1/8" Deep Boxes



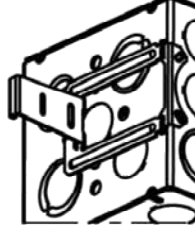
Comes preset



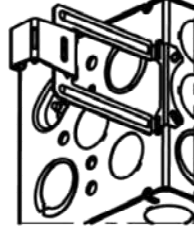
Bend center tab as shown - 2 places



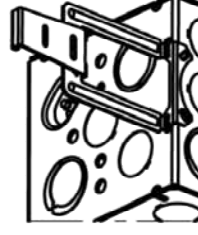
Bend center tab as shown



Bend center tab as shown



Bend both tabs as shown



Bend both tabs as shown

NOTICE: Bottom knockouts are NOT usable with the FS support.