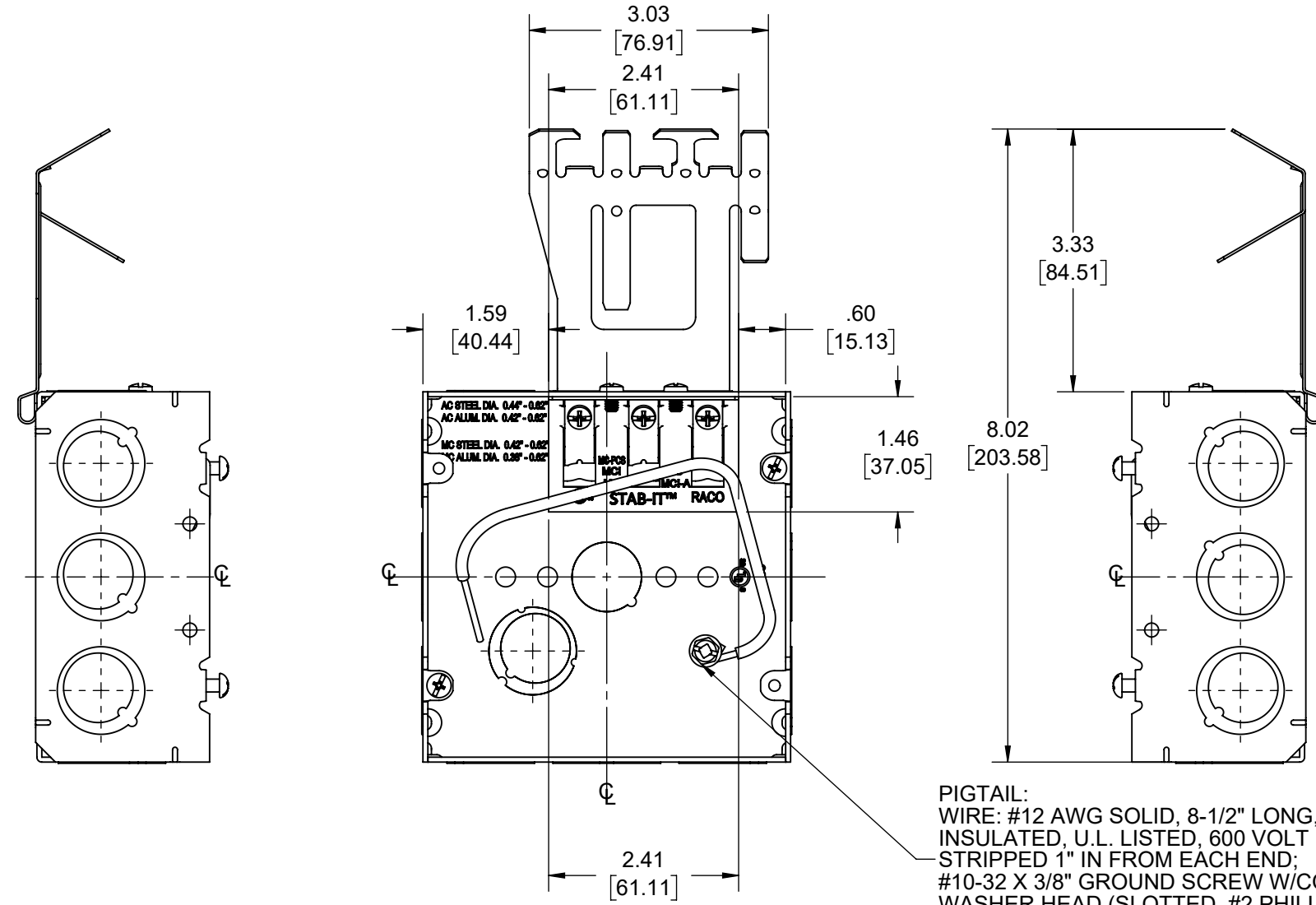
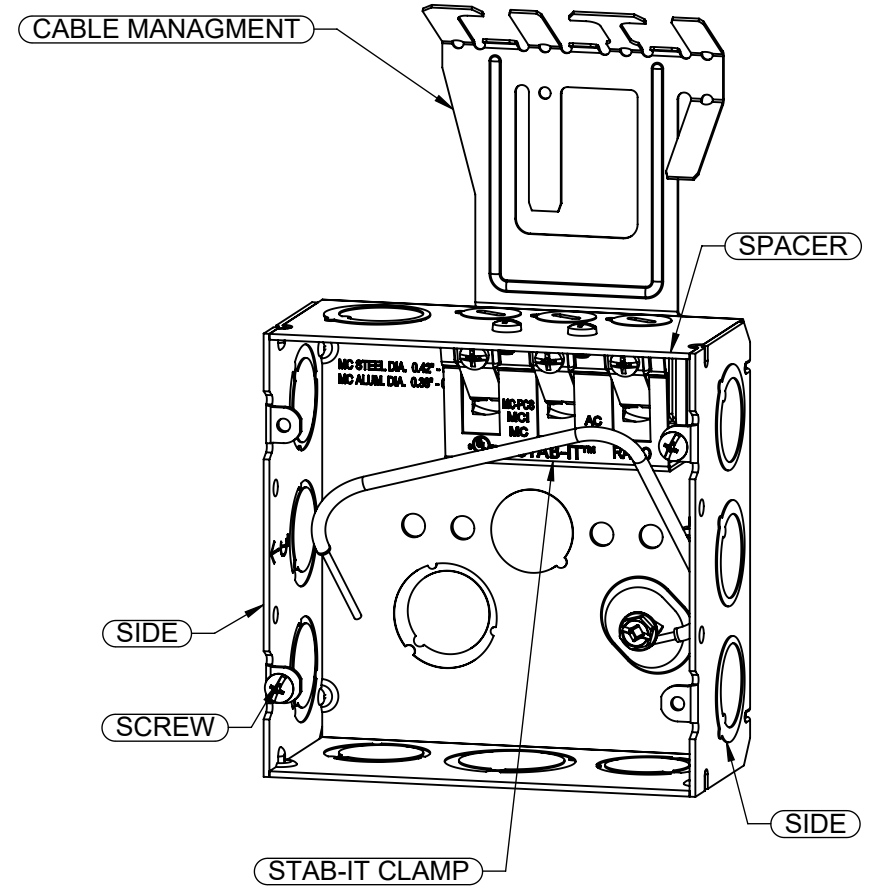


REVISIONS			
REV.	DATE	DESCRIPTION	BY:
-	06-06-19	INITIAL RELEASE OF DRAWING	DL



PIGTAIL:
WIRE: #12 AWG SOLID, 8-1/2" LONG, GREEN TW
INSULATED, U.L. LISTED, 600 VOLT MAX,
STRIPPED 1" IN FROM EACH END;
#10-32 X 3/8" GROUND SCREW W/COMBO HEX
WASHER HEAD (SLOTTED, #2 PHILLIPS AND
ROBERTSON)



CABLE TYPES AND RANGES FOR STAB-IT CLAMP	
CABLE TYPES	CABLE RANGES
MC-PCS STEEL & ALUMINUM	12-2/16-2, 12-3/16-2, 10-2/16-2
AC STEEL & ALUMINUM	14-2, 14-3, 14-4, 12-2, 12-3, 12-4, 10-2, 10-3
HCF AC STEEL	12-2, 12-3, 10-2, 10-3
HCF AC ALUMINUM	12-2, 12-3, 12-4, 10-2, 10-3
MC STEEL & ALUMINIUM	14-2, 14-3, 14-4, 12-2, 12-3, 12-4, 10-2, 10-3
MCI-A ALUMINIUM	14-2, 14-3, 14-4, 12-2, 12-3, 12-4, 10-2, 10-3
MCI-A STEEL	14-2, 12-2, 12-3, 12-4, 10-2, 10-3
HCF MCI-A STEEL	12-2, 12-3, 10-2
HCF MCI-A ALUMINIUM	12-2, 12-3, 12-4, 10-2, 10-3
3/8 TRADE SIZE FLEX, REFMC CONDUIT STEEL & ALUMINUM. ANTI SHORT BUSHING REQUIRED	
CABLE RANGE .380" DIA. MIN TO .620" DIA. MAX	

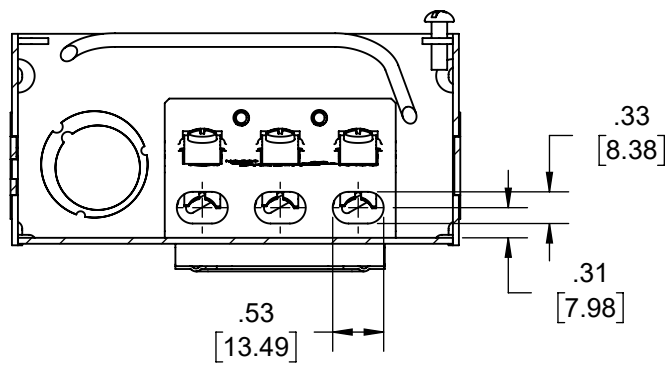
DESCRIPTION	MATERIAL	FINISH
CABLE MANAGEMENT	STEEL	GALVANIZED
PIG TAIL	COPPER	
STAB-IT CLAMPS	STEEL	GALVANIZED
FASTENERS	STEEL	GALVANIZED
SIDE	STEEL	GALVANIZED
SPACER	STEEL	GALVANIZED

LIST OF PARTS
THE DESIGN AND DIMENSIONS OF THE PRODUCT SHOWN ON THIS DRAWING ARE SUBJECT TO CHANGE WITHOUT NOTICE

TITLE:
4-11/16" SQ. X 2-1/8" DP. W/ STAB-IT II™ & CABLE MANAGEMENT BRACKET

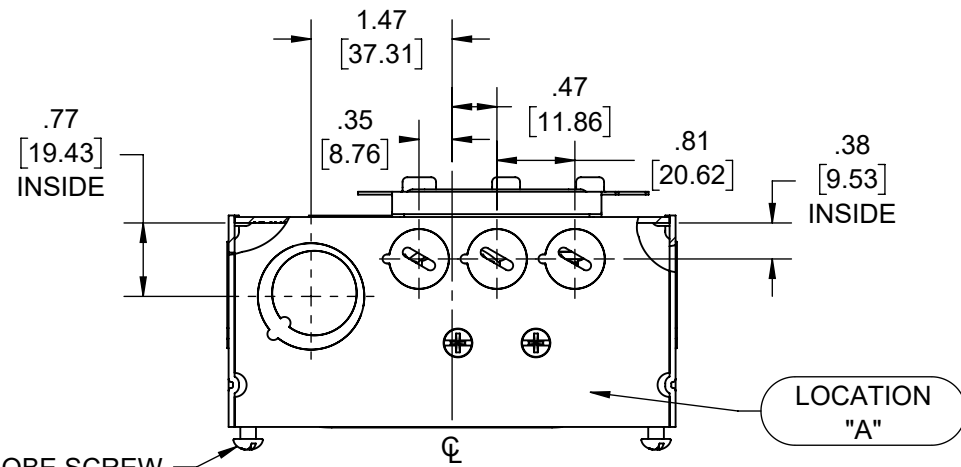
TOLERANCE UNLESS OTHERWISE SPECIFIED			DRAWN BY: DL	SCALE: 1:2
.XX DECIMAL ±.015 .XXX DECIMAL ±.005 ANGLE ±2°			APP. BY: N.S.	DATE: 06-06-19

- NOTES:
1. ALL DIMENSIONS ARE IN INCHES AND [MILLIMETERS]
 2. BOX VOLUME: 42.0 IN³ [688.3 CM³]
 3. cULus LISTED
 4. SEE SHEET 2 FOR FURTHER BOX DETAILS
 5. FOR INSTRUCTION SHEET SCROLL DOWN TO SHEET 3 & 4

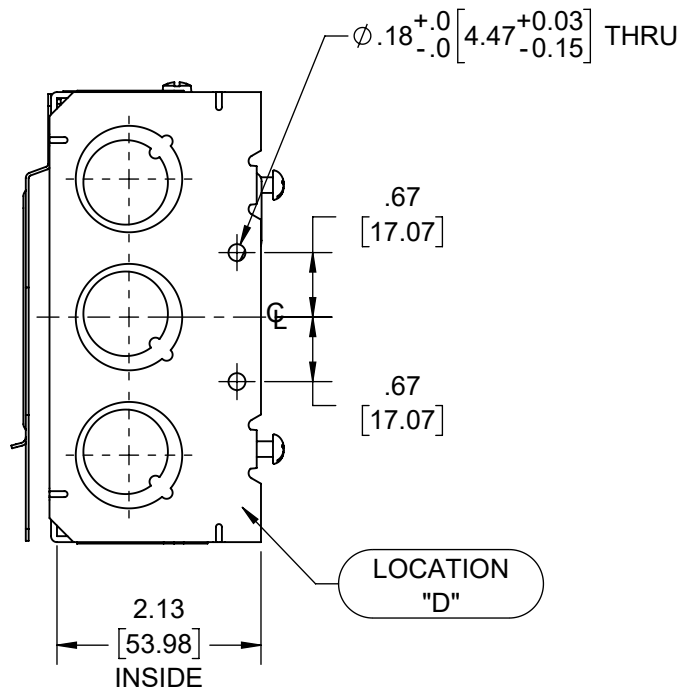


SECTION A-A

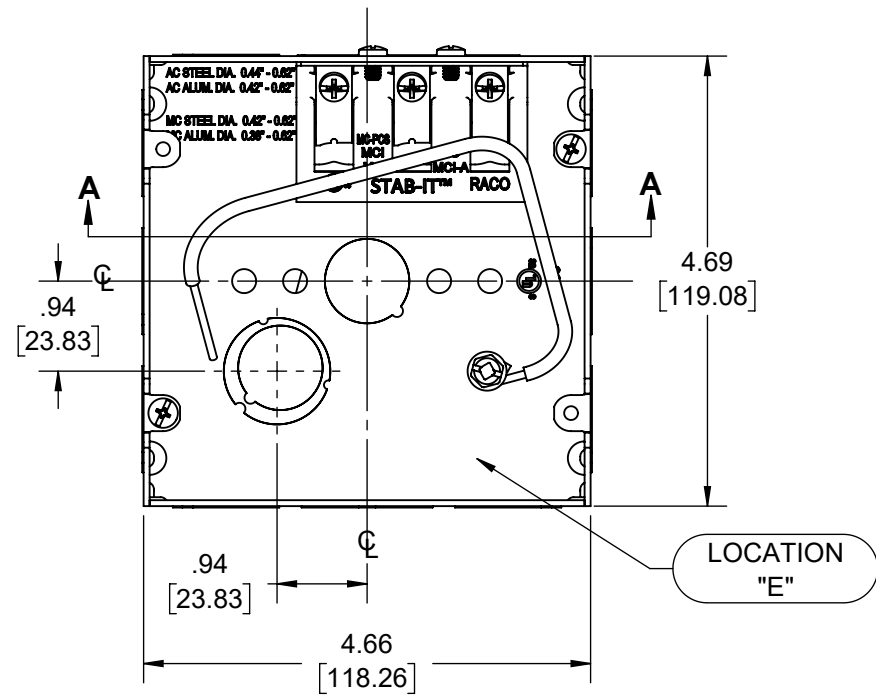
(2)#8-32 x 1/2 TRI LOBE SCREW



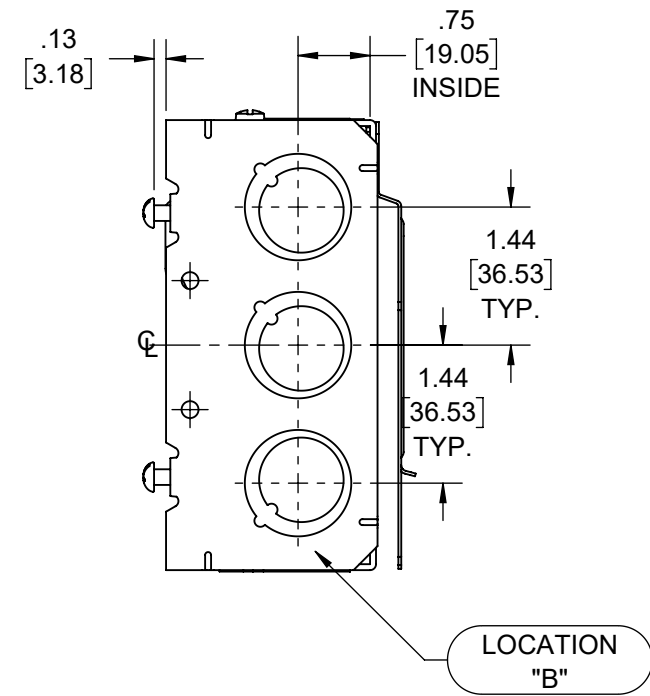
LOCATION "A"



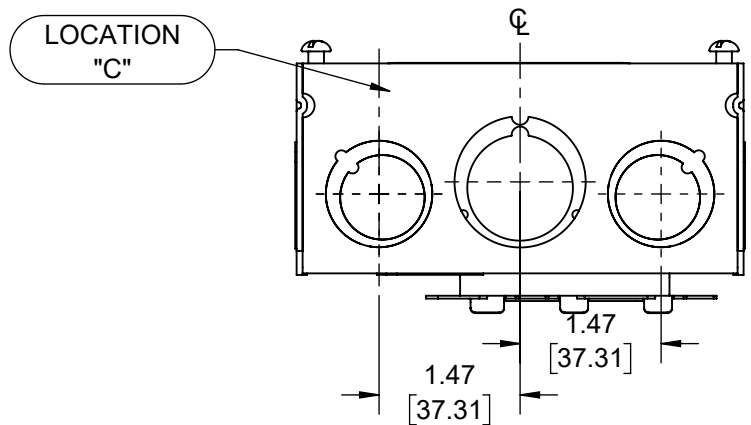
LOCATION "D"



LOCATION "E"



LOCATION "B"



LOCATION "C"

THE DESIGN AND DIMENSIONS OF THE PRODUCT SHOWN ON THIS DRAWING ARE SUBJECT TO CHANGE WITHOUT NOTICE

TITLE:
4-11/16" SQ. X 2-1/8" DP. W/ STAB-IT II™ & CABLE MANAGEMENT BRACKET

KNOCKOUTS		
TRADE SIZE	LOCATION	QTY.
(1/2"-3/4") TKO®	B, D	3
(1/2"-3/4") TKO®	C	2
(1/2"-3/4") TKO®	A, E	1
(3/4"-1") TKO®	C	1
1/2" KO	E	1

TOLERANCE UNLESS OTHERWISE SPECIFIED
.XX DECIMAL ±.015
.XXX DECIMAL ±.005
ANGLE ±2°

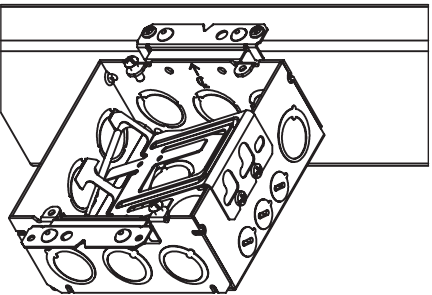


DRAWN BY: DL
APP. BY: N.S.
DATE: 06-06-19
SCALE: 1:2

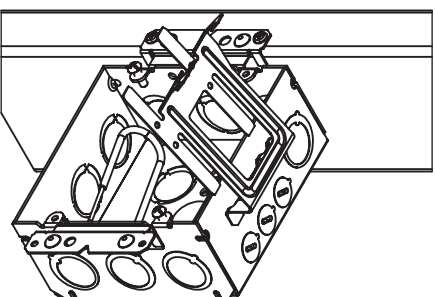
SIZE: **B**

Instructions for using RACO® cable support bracket with STAB-IT® II boxes

STEP 1. Install box to stud

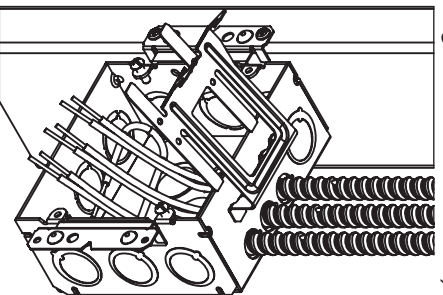


STEP 2. Pre-bend cable support bracket as shown

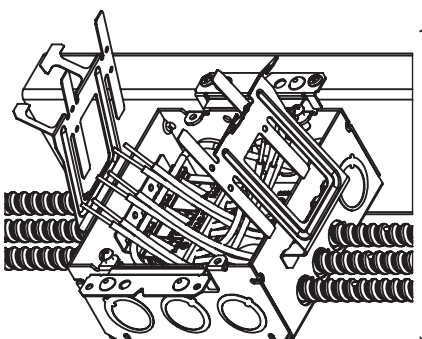


STEP 3. Remove pry-out(s) and install cable(s)

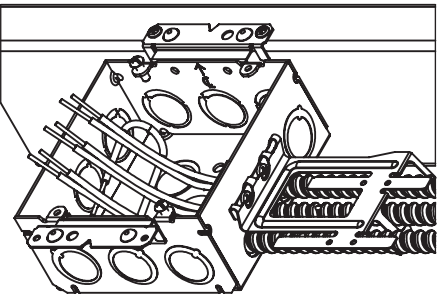
(single bracket shown)



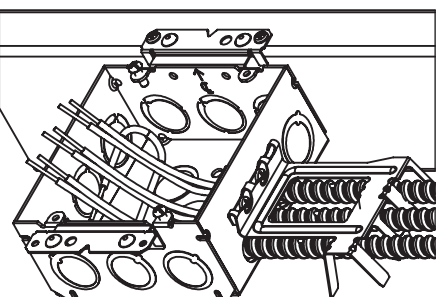
(double bracket shown)



STEP 4. Position cable support bracket as shown



STEP 5. Bend down center tabs to lock cables as shown



Hubbell Commercial Construction
Hubbell Incorporated (Delaware)

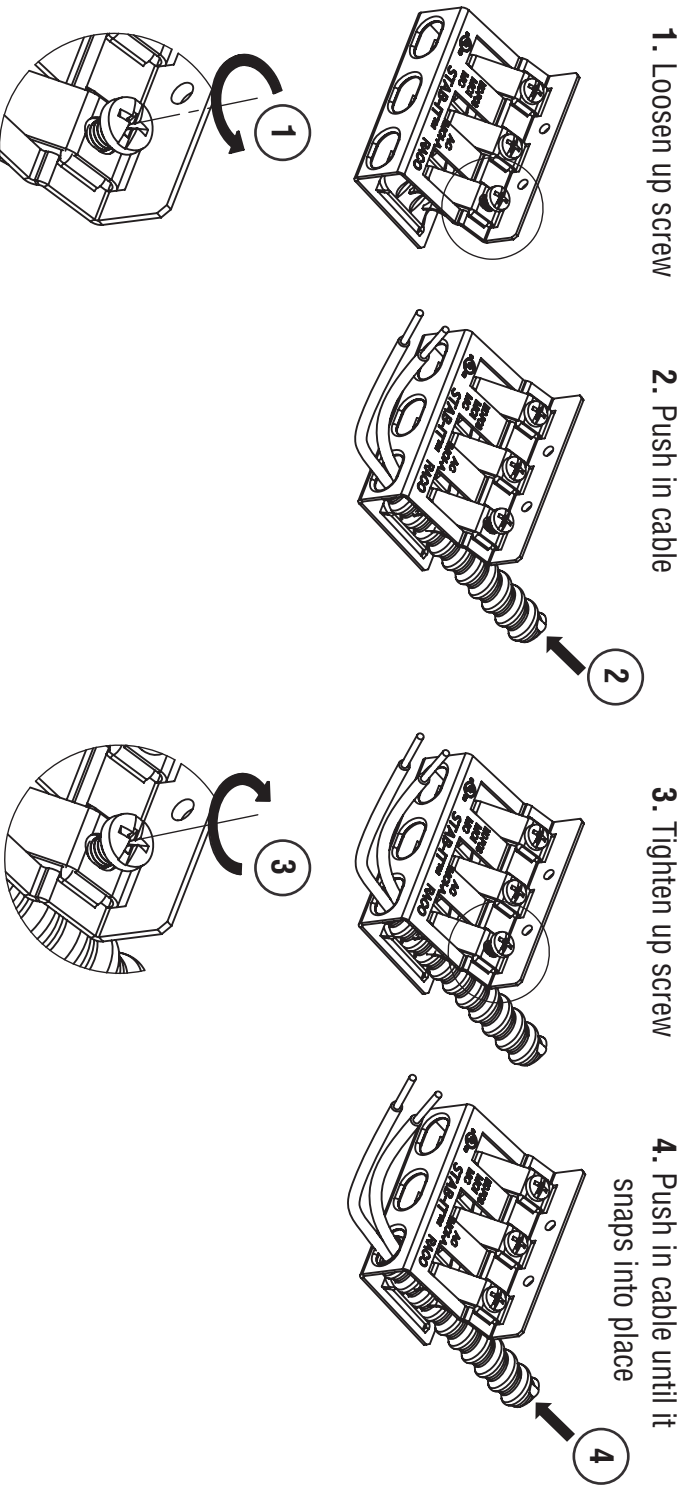
RACO INC.

3902 W. Sample St. P.O. Box 4002 South Bend, IN 46634
Phone: (574) 234-7151 FAX (574) 283-4244

MADE IN CHINA

RA-Instr 347
119082 rev1

Alternate instructions for installing larger diameter cables in RACO® STAB-IT® II boxes (if needed)



Instructions for removing cables from RACO® STAB-IT® II boxes

