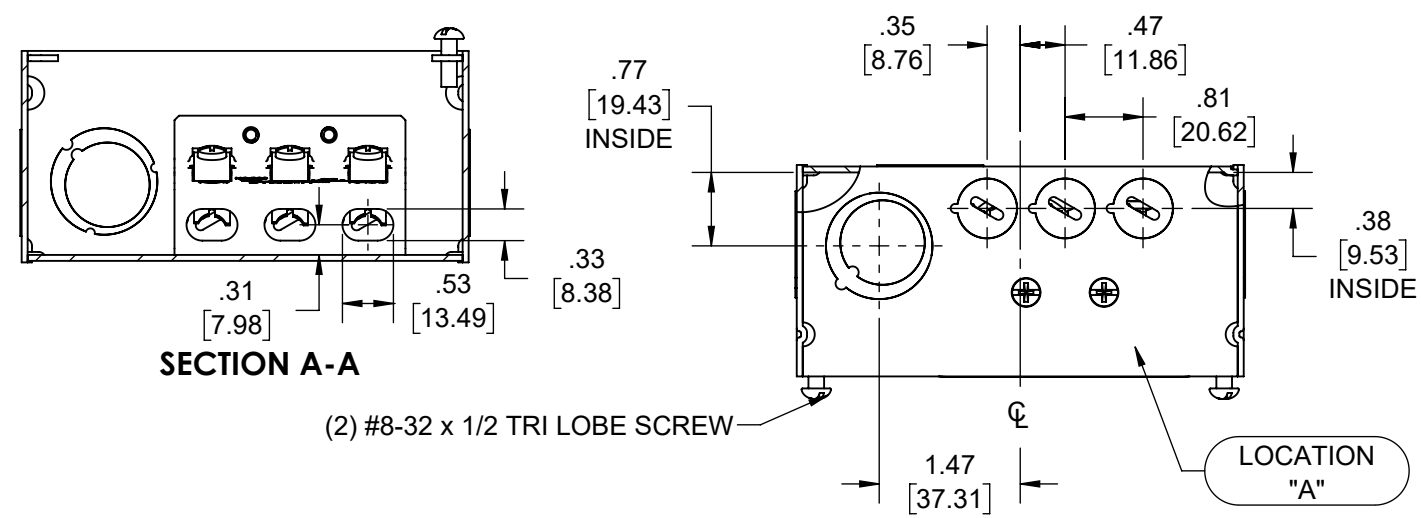
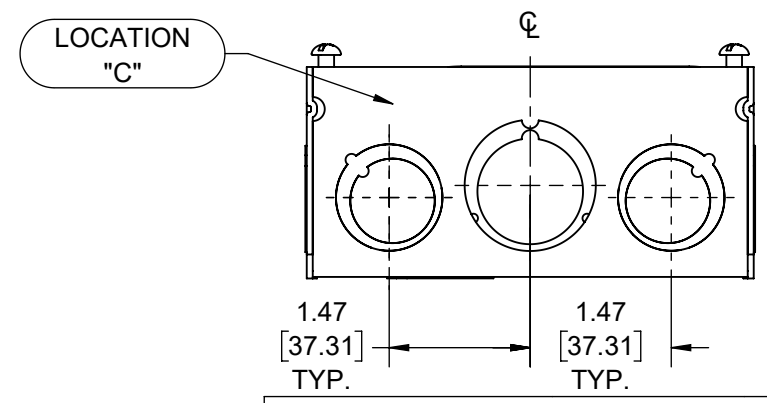
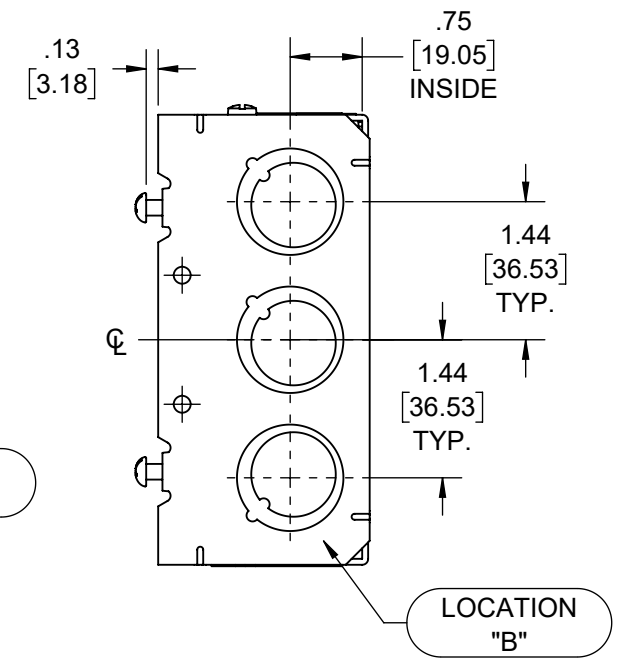
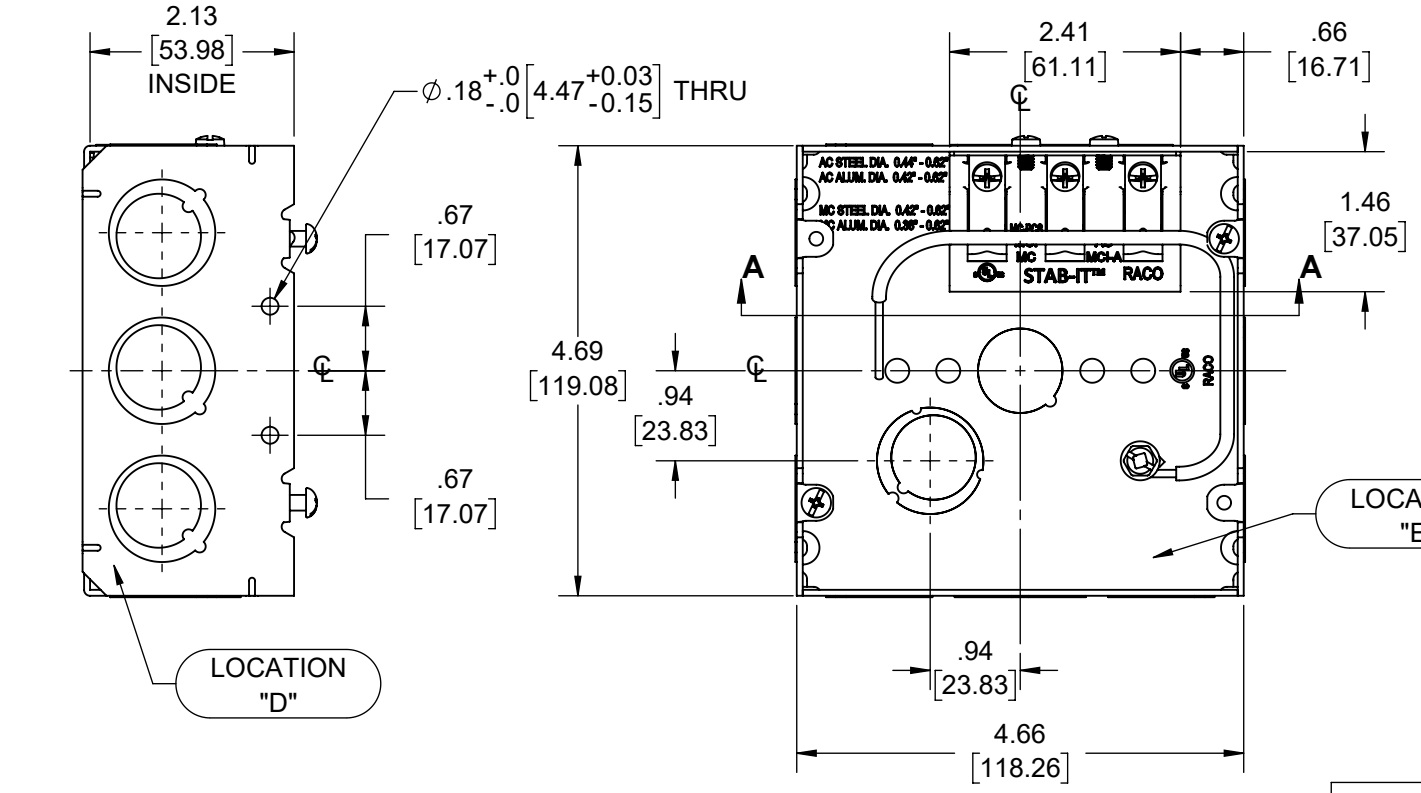
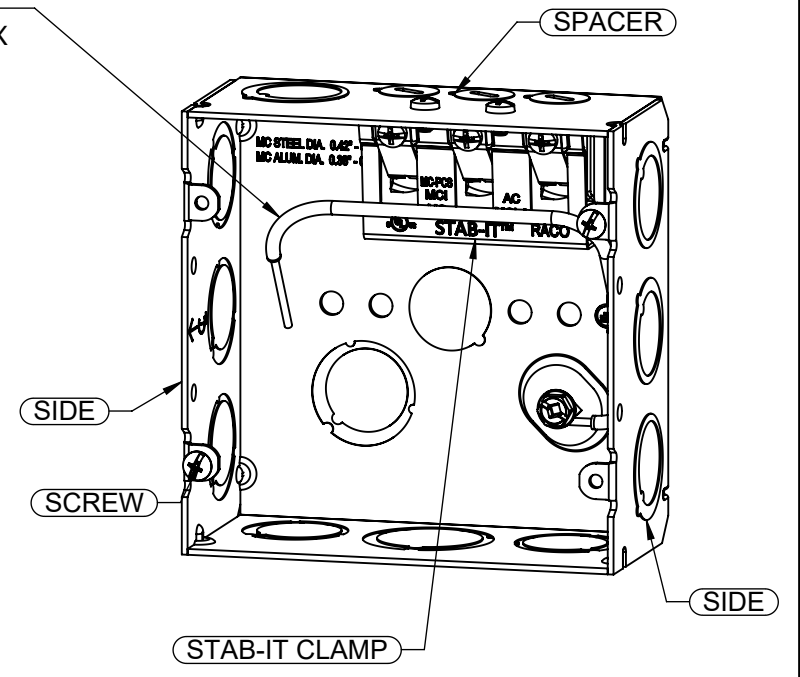


| REVISIONS | | | |
|-----------|----------|-----------------|-----|
| REV. | DATE | DESCRIPTION | BY: |
| - | 06-06-19 | INITIAL RELEASE | DL |



PIGTAIL:
 WIRE: #12 AWG SOLID, 8-1/2" LONG, GREEN TW INSULATED, U.L. LISTED, 600 VOLT MAX, STRIPPED 1" IN FROM EACH END;
 #10-32 X 3/8" GROUND SCREW W/COMBO HEX WASHER HEAD (SLOTTED, #2 PHILLIPS AND ROBERTSON)



| CABLE TYPES AND RANGES FOR STAB-IT CLAMP | |
|--|--|
| CABLE TYPES | CABLE RANGES |
| MC-PCS STEEL & ALUMINUM | 12-2/16-2, 12-3/16-2, 10-2/16-2 |
| AC STEEL & ALUMINUM | 14-2, 14-3, 14-4, 12-2, 12-3, 12-4, 10-2, 10-3 |
| HCF AC ALUMINUM | 12-2, 12-3, 12-4, 10-2, 10-3 |
| HCF AC STEEL | 12-2, 12-3, 10-2, 10-3 |
| MC STEEL & ALUMINIUM | 14-2, 14-3, 14-4, 12-2, 12-3, 12-4, 10-2, 10-3 |
| MCI-A ALUMINIUM | 14-2, 14-3, 14-4, 12-2, 12-3, 12-4, 10-2, 10-3 |
| MCI-A STEEL | 14-2, 12-2, 12-3, 12-4, 10-2, 10-3 |
| HCF MCI-A STEEL | 12-2, 12-3, 10-2 |
| HCF MCI-A ALUMINIUM | 12-2, 12-3, 12-4, 10-2, 10-3 |
| 3/8 TRADE SIZE FLEX, REFMC CONDUIT STEEL & ALUMINUM. ANTI SHORT BUSHING REQUIRED | |
| CABLE RANGE .380" DIA. MIN TO .620" DIA. MAX | |

| KNOCKOUTS | | |
|------------------|----------|------|
| TRADE SIZE | LOCATION | QTY. |
| (1/2"-3/4") TKO® | B, D | 3 |
| (1/2"-3/4") TKO® | C | 2 |
| (1/2"-3/4") TKO® | A, E | 1 |
| (3/4"-1") TKO® | C | 1 |
| 1/2" KO | E | 1 |

| DESCRIPTION | MATERIAL | FINISH |
|----------------|----------|------------|
| PIG TAIL | COPPER | |
| STAB-IT CLAMPS | STEEL | GALVANIZED |
| FASTENERS | STEEL | GALVANIZED |
| SIDE | STEEL | GALVANIZED |
| SPACER | STEEL | GALVANIZED |

LIST OF PARTS

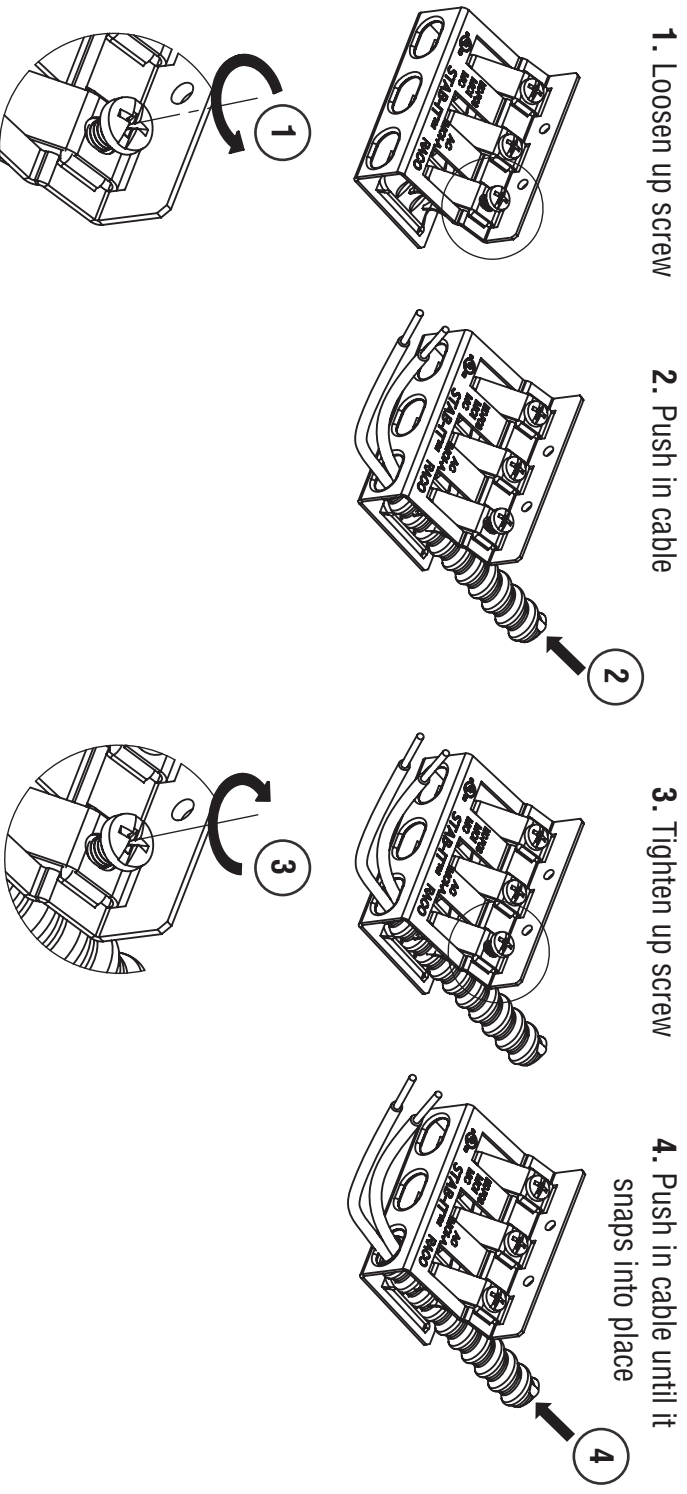
THE DESIGN AND DIMENSIONS OF THE PRODUCT SHOWN ON THIS DRAWING ARE SUBJECT TO CHANGE WITHOUT NOTICE

TITLE: **CAT 252S: 4-11/16" SQ. X 2-1/8" DP. W/ STAB-IT II™**

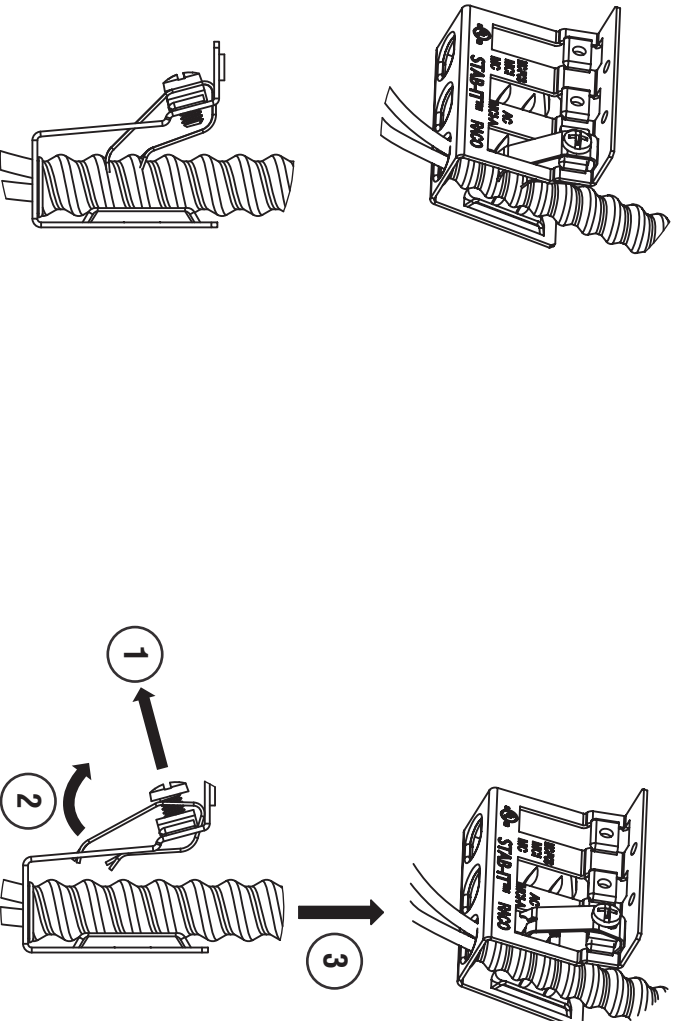
| | | | | |
|--|-----------|----|----------|----------|
| TOLERANCE UNLESS OTHERWISE SPECIFIED | | | SCALE: | SIZE: |
| .XX DECIMAL ±.015 .XXX DECIMAL ±.005 ANGLE ±2° | | | DATE: | 1:2 |
| | DRAWN BY: | DL | APP. BY: | N.S. |
| | | | DATE: | 06-06-19 |

- NOTES:
1. ALL DIMENSIONS ARE IN INCHES AND [MILLIMETERS]
 2. BOX VOLUME: 42.0 IN³ [688.3 CM³]
 3. cULus LISTED
 4. FOR INSTRUCTION SHEET SCROLL DOWN TO NEXT SHEET

Alternate instructions for installing larger diameter cables in RACO® STAB-IT® II boxes (if needed)



Instructions for removing cables from RACO® STAB-IT® II boxes



Hubbell Commercial Construction
Hubbell Incorporated (Delaware)

RACO INC.
3902 W. Sample St. P.O. Box 4002 South Bend, IN 46634
Phone: (574) 234-7151 FAX (574) 283-4244

MADE IN CHINA
RA-Instr 348 rev2
400704