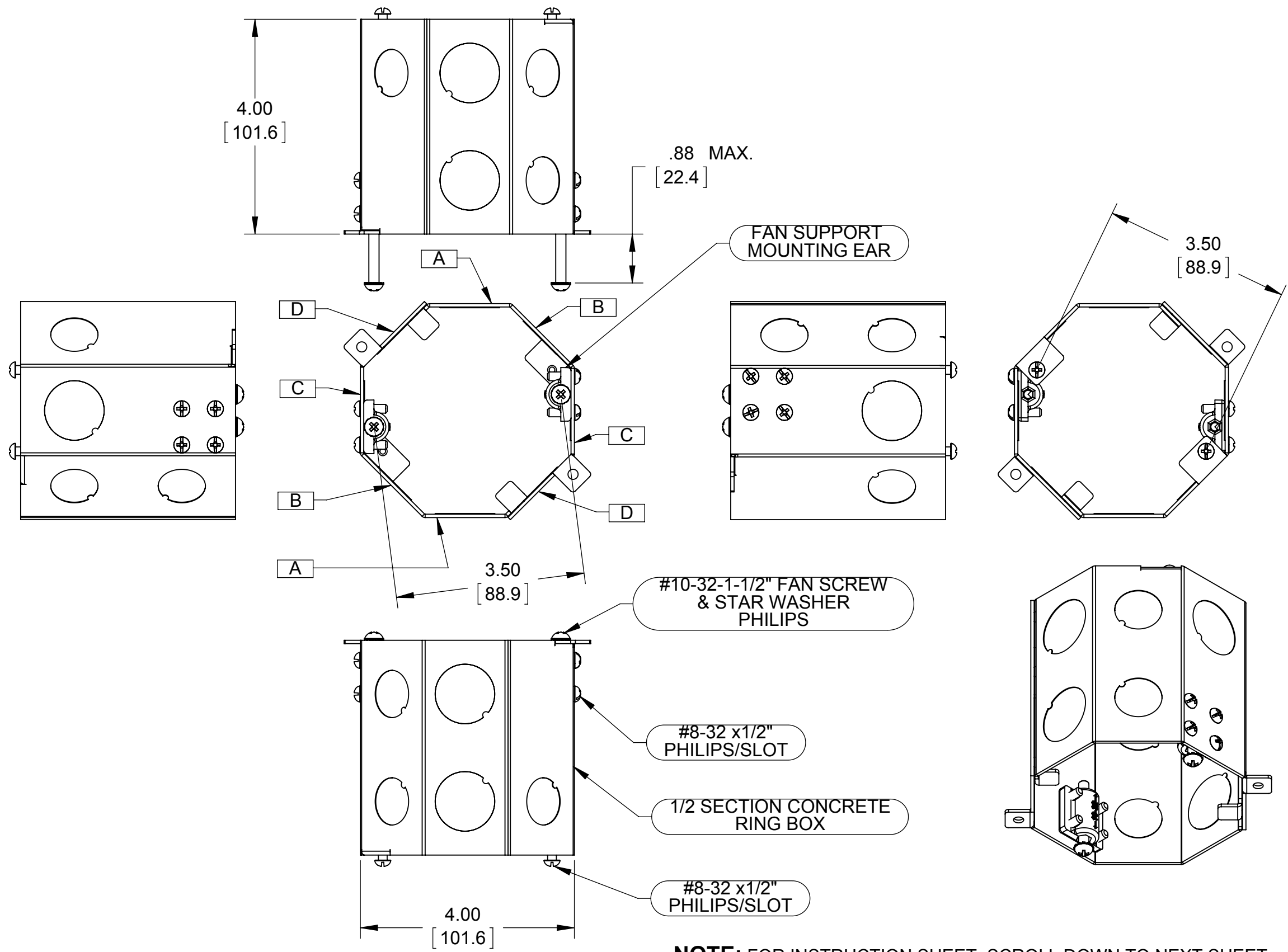


**LIST OF PARTS**

DESCRIPTION	MATERIAL	FINISH
1/2 SECTION CONCRETE RING BOX	STEEL	GALVANIZED
FAN SUPPORT MOUNTING EAR	ZINC	DIE CAST
FASTENERS	STEEL	GALVANIZED



- NOTES:**
1. ALL DIMENSIONS ARE IN INCHES AND [MILLIMETERS]
  2. BOX VOLUME: 49.3 IN<sup>3</sup> [807.9 CM<sup>3</sup>]
  3. TO BE USED WITH BACK PLATES (COVERS) CAT. # 890 OR 892 OR ADAPTOR RING 893 SOLD SEPARATELY
  4. UL LISTED

**NOTE:** FOR INSTRUCTION SHEET SCROLL DOWN TO NEXT SHEET

KNOCKOUTS	
TRADE SIZE	LOCATION
1/2" KO	2 OF EACH ON "B" SIDE
	1 OF EACH ON "D" SIDE
3/4" KO	2 OF EACH ON "A" SIDE
	1 OF EACH ON "C" SIDE

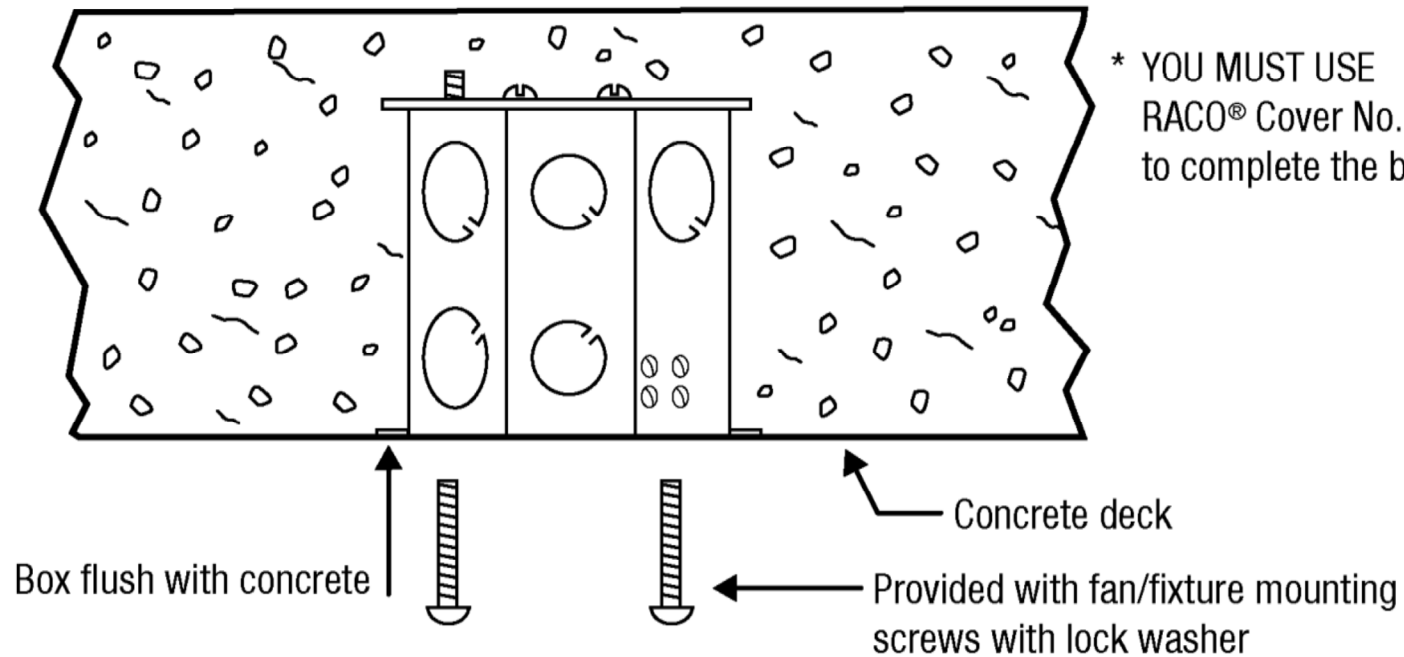
INITIAL RELEASE	K.K.	06/16/15
SYM.	REVISION DESCRIPTION	APP DATE

THE DESIGN AND DIMENSIONS OF THE PRODUCT SHOWN ON THIS DRAWING ARE SUBJECT TO CHANGE WITHOUT NOTICE

TITLE:  
**4" DEEP CONCRETE RING CEILING FAN BOX ASSEMBLIES**

<small>TOLERANCE UNLESS OTHERWISE SPECIFIED</small>  .XX DECIMAL ±.015 .XXX DECIMAL ±.005 ANGLE ±2°	<b>RACO</b> South Bend, Indiana		SCALE: <b>B</b> 1:2
	DRAWN BY:	K.K.	
	APP. BY:	N.S.	
	DATE:	06/16/2015	

# Instructions For No. 284 Concrete Ring Ceiling Fan Box\*



Catalog No. 284 is for applications where wiring is installed in ceiling of poured concrete. These box assemblies are installed on wooden or steel concrete forms. After forms are removed, the box is flush with the concrete.

Mount ceiling fan or fixture securely to box using the two (2) #10-32 x 1-1/2" long thread cutting screws provided.

Acceptable for 70 Lbs. (32 kg) or less fan support. Suitable for 150 Lbs. (68 kg) or less fixture.

MADE IN MEXICO

RA-Instr 07 rev1  
119093



RACO INC.  
3902 W. Sample St. P.O. Box 4002 South Bend, IN 46634  
Phone: (574) 234-7151 FAX (574) 283-4244