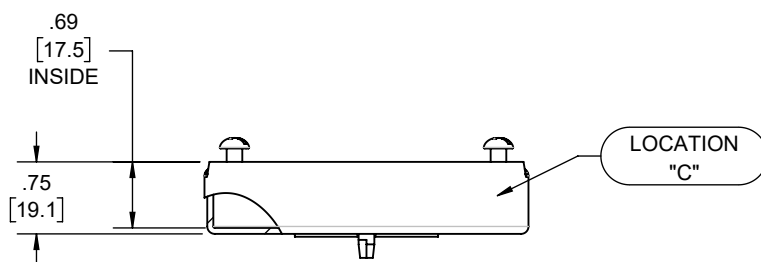
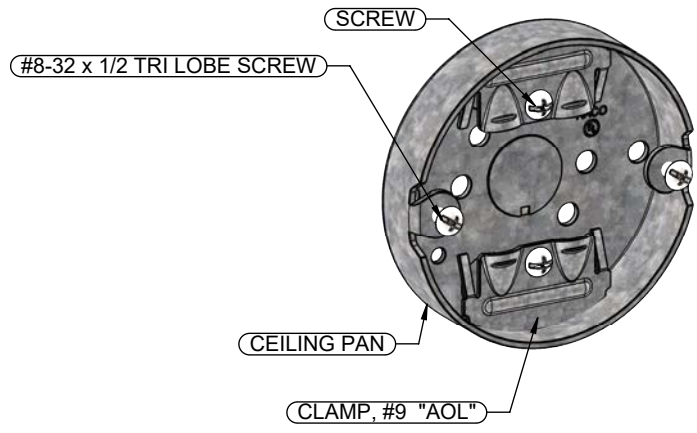
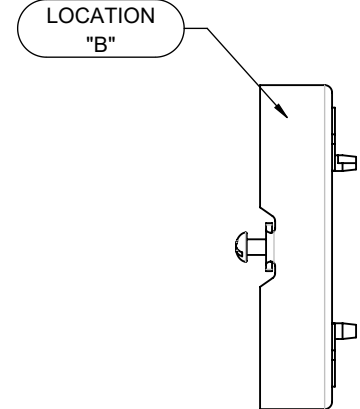
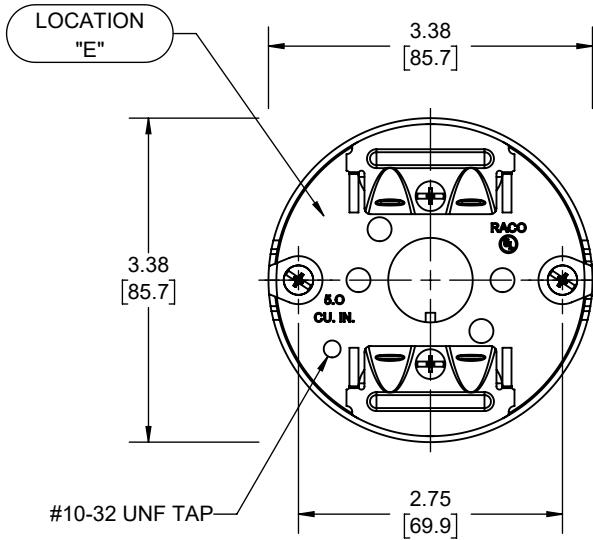


REVISIONS			
REV.	DATE	DESCRIPTION	BY
-	12-01-21	INITIAL RELEASE	RMV



- NOTES:
1. ALL DIMENSIONS ARE IN INCHES AND [MILLIMETERS]
  2. BOX VOLUME: 5.0 IN<sup>3</sup> [81.9 CM<sup>3</sup>]
  3. UL LISTED

KNOCKOUTS		
TRADE SIZE	LOCATION	QTY.
1/2" KO	E	1

DESCRIPTION	MATERIAL	FINISH
FASTENERS	STEEL	GALVANIZED
CLAMPS	STEEL	GALVANIZED
CEILING PAN	STEEL	GALVANIZED

**LIST OF PARTS**

THE DESIGN AND DIMENSIONS OF THE PRODUCT SHOWN ON THIS DRAWING ARE SUBJECT TO CHANGE WITHOUT NOTICE

TITLE:  
**3-1/2" CEILING PAN, 3/4" DP, NM-CLAMPS**

TOLERANCE UNLESS OTHERWISE SPECIFIED .XX DECIMAL ± .015 .XXX DECIMAL ± .005 ANGLE ± 2°		
	DRAWN BY:	RMV
	APP. BY:	N.S.
	DATE:	12-01-21
	SCALE:	1:2