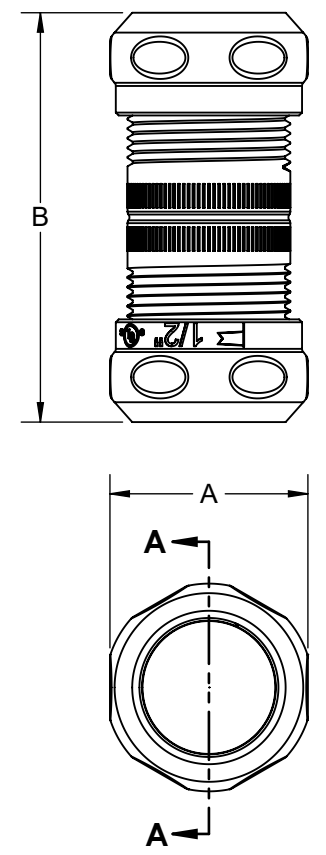
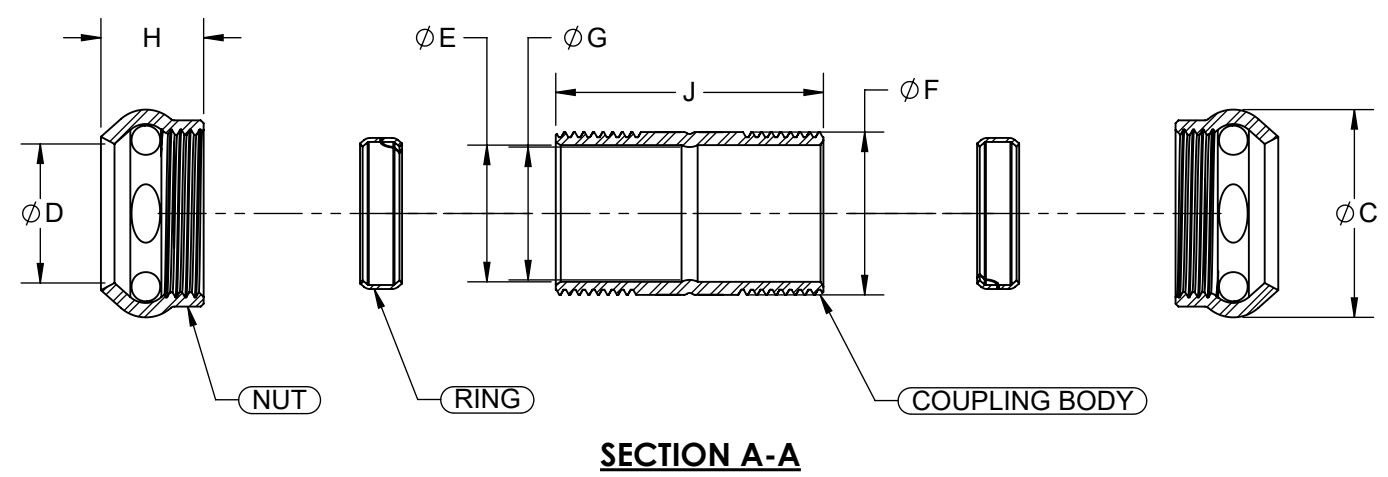
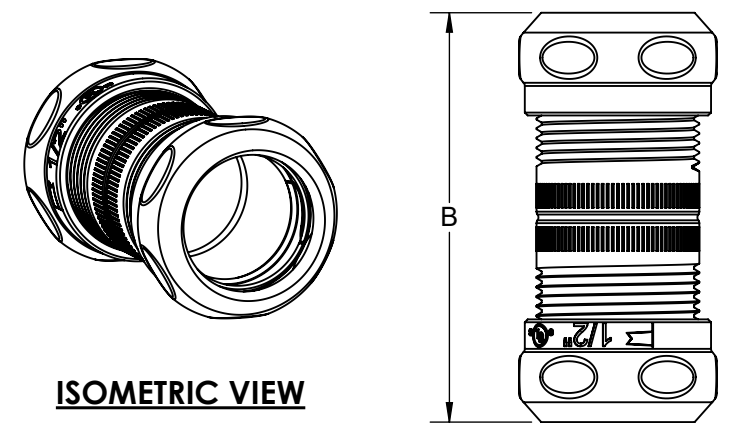


CAT. #	SIZE	A	B	C	D	E	F	G	H	J	UNS THREAD
2922	1/2"	1.03 [26.2]	2.13 [54.2]	1.08 [27.5]	0.72 [18.4]	0.71 [18.1]	0.85 [21.5]	0.69 [17.6]	0.54 [13.6]	1.39 [35.4]	0.858-14 UNS
2923	3/4"	1.29 [32.7]	2.32 [58.9]	1.37 [34.8]	0.94 [23.9]	0.93 [23.6]	1.08 [27.4]	0.91 [23.1]	0.64 [16.2]	1.55 [39.2]	1.087-14 UNS
2924	1"	1.54 [39.0]	2.35 [59.7]	1.63 [41.5]	1.18 [29.9]	1.17 [29.8]	1.33 [33.7]	1.13 [28.8]	0.67 [17.0]	1.62 [41.0]	1.331-18 UNS
2925	1-1/4"	1.89 [48.0]	3.30 [83.8]	2.03 [51.4]	1.56 [39.6]	1.53 [38.8]	1.70 [43.2]	1.49 [37.8]	0.71 [18.0]	2.50 [63.6]	1.701-14 UNS
2926	1-1/2"	2.14 [54.3]	3.44 [87.4]	2.26 [57.5]	1.78 [45.3]	1.76 [44.8]	1.94 [49.4]	1.72 [43.8]	0.77 [19.6]	2.52 [64.0]	1.933-14 UNS
2928	2"	2.64 [67.1]	3.48 [88.4]	2.77 [70.3]	2.25 [57.2]	2.23 [56.7]	2.42 [61.4]	2.19 [55.7]	0.79 [20.2]	2.51 [63.8]	2.398-14 UNS
2950	2-1/2"	3.43 [87.1]	5.31 [130.3]	3.60 [91.4]	2.95 [74.9]	2.91 [73.8]	3.16 [80.3]	2.85 [72.3]	1.03 [26.1]	3.69 [93.8]	3.142-11.5 UNS
2952	3"	4.05 [102.9]	5.78 [146.9]	4.28 [108.8]	3.57 [90.8]	3.55 [90.2]	3.80 [96.5]	3.49 [88.7]	1.05 [26.8]	4.30 [109.1]	3.776-11.5 UNS
2954	3-1/2"	4.57 [116.0]	5.97 [151.5]	4.77 [121.2]	4.09 [103.8]	4.05 [102.8]	4.30 [109.1]	3.99 [101.2]	1.09 [27.8]	4.40 [111.7]	4.276-11.5 UNS
2956	4"	5.05 [128.1]	6.22 [157.9]	5.27 [133.9]	4.57 [116.1]	4.54 [115.2]	4.80 [122.0]	4.48 [113.7]	1.16 [29.4]	4.52 [114.8]	4.776-11.5 UNS

TIGHTENING TORQUE			
(SEE CLAUSES 6.2.1 8.17.2.1 8.27.2.1, 8.28.2.2, and 8.28.2.5.)			
TRADE SIZE OF FITTING	METRIC DESIGNATOR	TIGHTENING TORQUE	
		N-m	(lbf-in)
1/4a	10	19.8	175
3/8	12	22.6b	200
1/2	16	33.9	300
3/4	21	56.5	500
1	27	79.1	700
1-1/4	35	113	1000
1-1/2	41	136	1200
2	53	181	1600
2-1/2	63	181	1600
3	78	181	1600
3-1/2	91	181	1600
4	103	181	1600

a APPLIES TO FLEXIBLE CORD FITTINGS ONLY
b A 3/8 (12) TRADE-SIZE FITTING FOR USE WITH LIQUID-TIGHT FLEXIBLE METAL CONDUIT SHALL BE TIGHTENED WITH A TORQUE OF 26.5 N-M (235 LBF-IN).

REVISIONS			
REV.	DATE	DESCRIPTION	BY:
-	07-28-21	INITIAL RELEASE OF DRAWING	MS



- NOTES:**
- ALL DIMENSIONS ARE IN INCHES AND [MILLIMETERS].
 - LOCKNUT SHALL BE HAND-TIGHTENED AND THEN FURTHER TIGHTENED 1/4 TURN WITH A HAMMER AND A FLAT BLADED SCREWDRIVER OR BY AN EQUIVALENT METHOD.
 - cULus LISTED.

DESCRIPTION	MATERIAL	FINISH
RING	STEEL	ZINC
COMPRESSION NUT	STEEL	ZINC
COUPLING BODY	STEEL	ZINC

LIST OF PARTS

THE DESIGN AND DIMENSIONS OF THE PRODUCT SHOWN ON THIS DRAWING ARE SUBJECT TO CHANGE WITHOUT NOTICE

TITLE:
COMPRESSION COUPLING-STEEL CUS

TOLERANCE UNLESS OTHERWISE SPECIFIED		DRAWN BY:	MS	SCALE:	SIZE:
.XX DECIMAL ±.015 .XXX DECIMAL ±.005 ANGLE ±2°		APP. BY:	N.S.	1:1	B
		DATE:	07-28-21		