

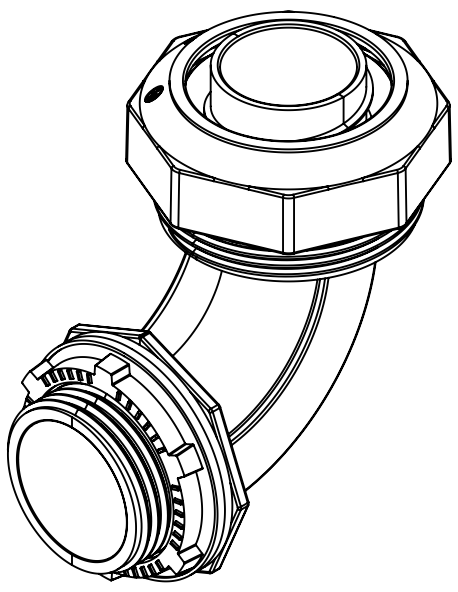
CAT.	SIZE	A	B	C	D	E	F	G	H	J	TIGHTENING TORQUE			
											TRADE SIZE OF FITTING	METRIC DESIGNATOR	TIGHTENING TORQUE	
												N-m	(lbf-in)	
3421DC	3/8"	2.27 [57.7]	2.52 [64]	1.37 [34.8]	0.67 [17]	0.78 [19.8]	0.59 [15]	0.47 [11.9]	1/2" - 14 NPT	1-3/16" - 18 UNF	1/4a	10	19.8	175
3422DC	1/2"	2.27 [57.7]	2.55 [64.8]	1.38 [35.1]	0.67 [17]	0.8 [20.3]	0.58 [14.7]	0.48 [12.2]	1/2" - 14 NPT	1-3/16" - 18 UNF	3/8	12	22.6b	200
3423DC	3/4"	2.44 [62]	2.65 [67.3]	1.69 [42.9]	0.8 [20.3]	0.81 [20.6]	0.54 [13.7]	0.52 [13.2]	3/4" - 14 NPT	1-7/16" - 18UNF	1/2	16	33.9	300
3424DC	1"	3.37 [85.6]	3.88 [98.6]	1.95 [49.5]	1 [25.4]	1.09 [27.7]	0.7 [17.8]	0.65 [16.5]	1" - 11 1/2 NPT	1" 11/16 -18 UNF	3/4	21	56.5	500
3425DC	1-1/4"	3.57 [90.7]	3.94 [100]	2.42 [61.5]	1.36 [34.5]	1.09 [27.7]	0.85 [21.6]	0.65 [16.5]	1 1/4" - 11 1/2 NPT	2 1/8" - 16 UNF	1	27	79.1	700
3426DC	1-1/2"	3.74 [95]	4.27 [108.5]	2.63 [66.8]	1.59 [40.4]	1.21 [30.7]	0.85 [21.6]	0.71 [18]	1 1/2" - 11 1/2 NPT	2 3/8" - 16 UNF	1-1/4	35	113	1000
3428DC	2"	4.41 [112]	4.87 [123.7]	3.25 [82.6]	2.05 [52]	1.2 [30.5]	0.84 [21.3]	0.68 [17.3]	2" - 11 1/2 NPT	2 7/8" - 18 UNF	1-1/2	41	136	1200
											2	53	181	1600
											2-1/2	63	181	1600
											3	78	181	1600
											3-1/2	91	181	1600
											4	103	181	1600

TIGHTENING TORQUE			
TRADE SIZE OF FITTING	METRIC DESIGNATOR	TIGHTENING TORQUE	
		N-m	(lbf-in)
1/4a	10	19.8	175
3/8	12	22.6b	200
1/2	16	33.9	300
3/4	21	56.5	500
1	27	79.1	700
1-1/4	35	113	1000
1-1/2	41	136	1200
2	53	181	1600
2-1/2	63	181	1600
3	78	181	1600
3-1/2	91	181	1600
4	103	181	1600

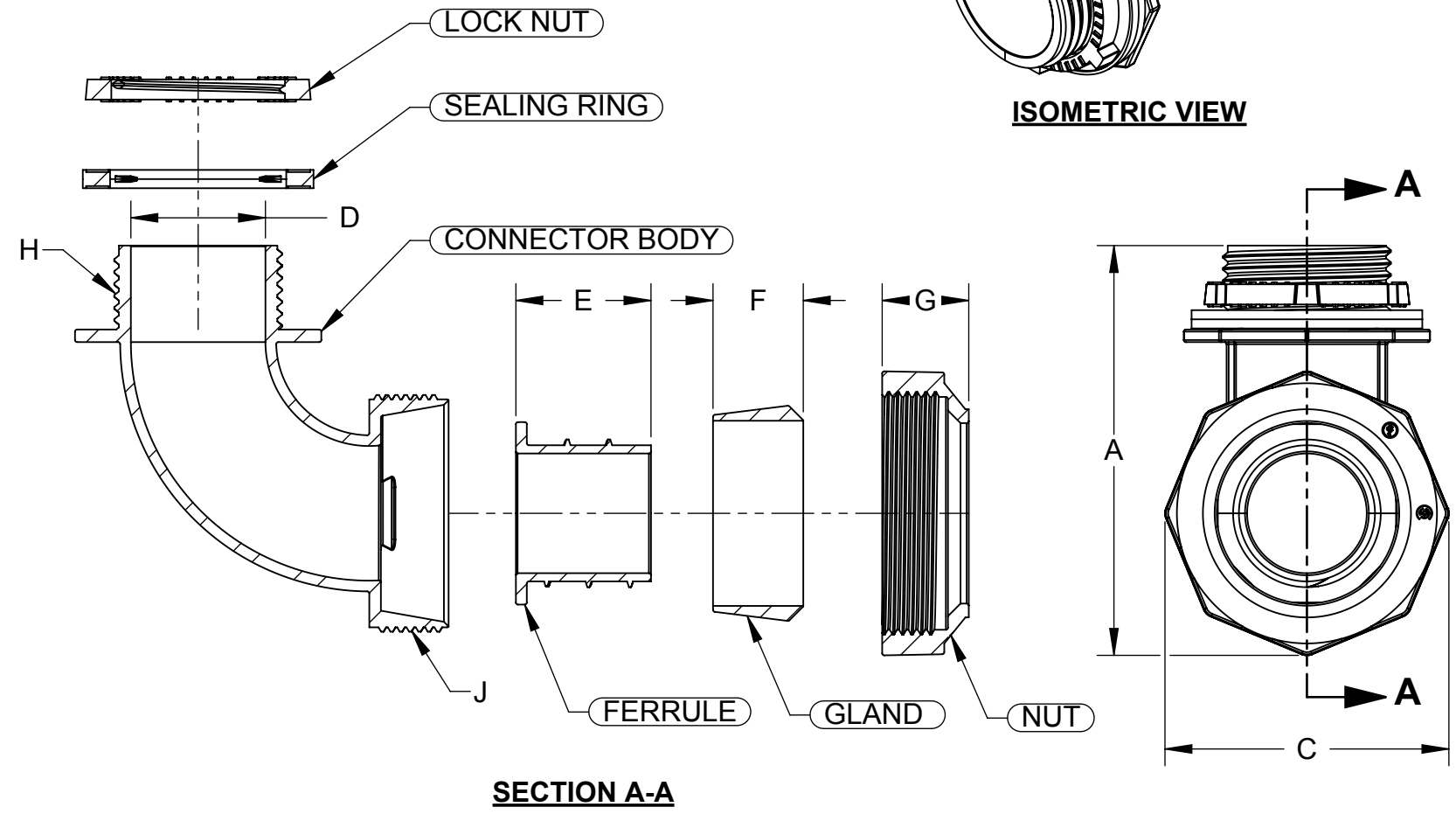
a APPLIES TO FLEXIBLE CORD FITTINGS ONLY
b A 3/8 (12) TRADE-SIZE FITTING FOR USE WITH LIQUID-TIGHT FLEXIBLE METAL CONDUIT SHALL BE TIGHTENED WITH A TORQUE OF 26.5 N-M (235 LBF-IN).

LIST OF PARTS		
DESCRIPTION	MATERIAL	FINISH
BODY	ZINC ALLOY	BURNISHED
NUT	ZINC ALLOY	BURNISHED
LOCK NUT	ZINC ALLOY	BURNISHED
FERRULE	ZINC ALLOY	BURNISHED
SEALING RING	POLYETHYLENE	PURPLE
GLAND	POLYETHYLENE	PURPLE

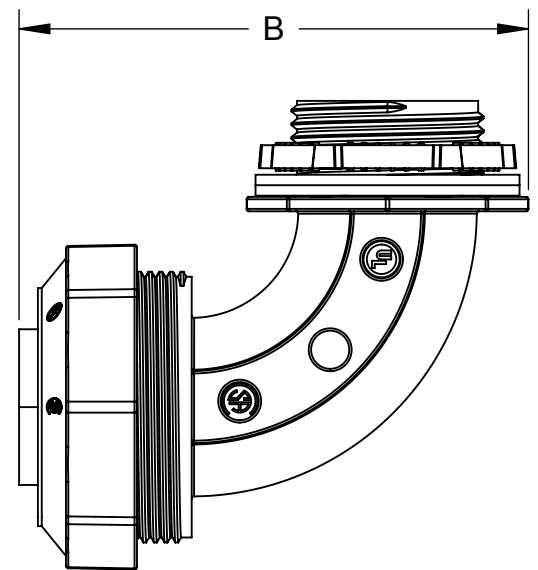
- NOTES:**
- ALL DIMENSIONS ARE IN INCHES AND [MILLIMETERS].
 - LOCKNUT SHALL BE HAND-TIGHTENED AND THEN FURTHER TIGHTENED 1/4 TURN WITH A HAMMER AND A FLAT BLADED SCREWDRIVER OR BY AN EQUIVALENT METHOD.
 - LIQUID TIGHT.
 - cULus LISTED.



ISOMETRIC VIEW



SECTION A-A



INITIAL RELEASE	S.J.	05/03/2017
REVISION DESCRIPTION	APP	DATE

THE DESIGN AND DIMENSIONS OF THE PRODUCT SHOWN ON THIS DRAWING ARE SUBJECT TO CHANGE WITHOUT NOTICE

TITLE:
ZINC DIE-CAST LIQUID TIGHT CONNECTOR 90DEG UNINSULATED CUS

TOLERANCE UNLESS OTHERWISE SPECIFIED		
.XX DECIMAL ±.015	RACO South Bend, Indiana	
.XXX DECIMAL ±.005		
ANGLE ±2°		
DRAWN BY:	M.M.	SCALE:
APP. BY:	S.J.	1:1
DATE:	05/03/2017	