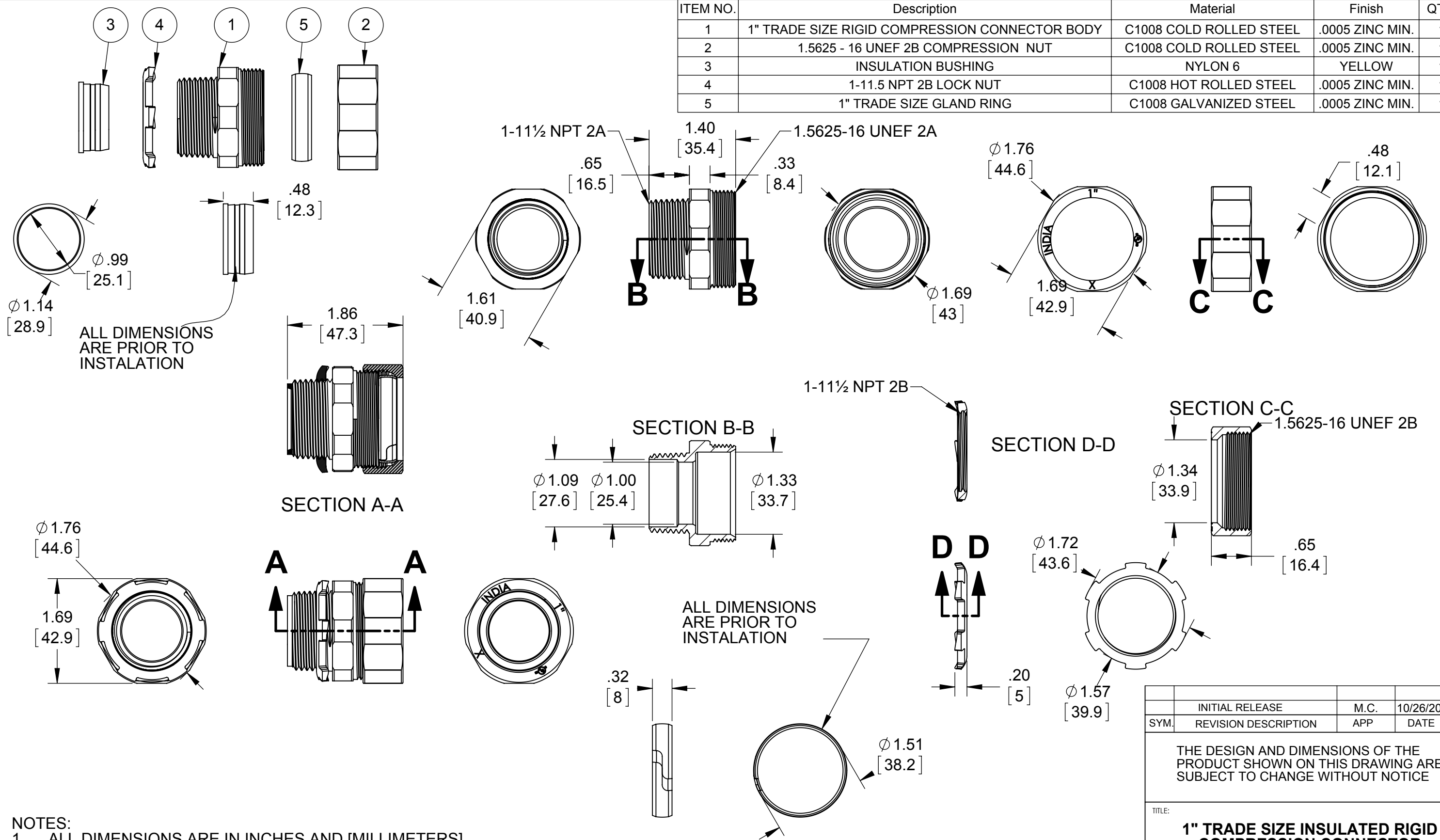


ITEM NO.	Description	Material	Finish	QTY.
1	1" TRADE SIZE RIGID COMPRESSION CONNECTOR BODY	C1008 COLD ROLLED STEEL	.0005 ZINC MIN.	1
2	1.5625 - 16 UNEF 2B COMPRESSION NUT	C1008 COLD ROLLED STEEL	.0005 ZINC MIN.	1
3	INSULATION BUSHING	NYLON 6	YELLOW	1
4	1-11.5 NPT 2B LOCK NUT	C1008 HOT ROLLED STEEL	.0005 ZINC MIN.	1
5	1" TRADE SIZE GLAND RING	C1008 GALVANIZED STEEL	.0005 ZINC MIN.	1



- NOTES:
1. ALL DIMENSIONS ARE IN INCHES AND [MILLIMETERS]
  2. LOCKNUT SHALL BE HAND-TIGHTENED AND THEN FURTHER TIGHTENED 1/4 TURN WITH A HAMMER AND A FLAT BLADED SCREWDRIVER OR BY AN EQUIVALENT METHOD
  3. COMPRESSION NUT IS TO BE TIGHTENED TO 700 LBF-IN TORQUE
  4. CONCRETE TIGHT
  5. cULus® LISTED

INITIAL RELEASE	M.C.	10/26/2015
SYM.	REVISION DESCRIPTION	APP DATE
THE DESIGN AND DIMENSIONS OF THE PRODUCT SHOWN ON THIS DRAWING ARE SUBJECT TO CHANGE WITHOUT NOTICE		
TITLE: <b>1" TRADE SIZE INSULATED RIGID COMPRESSION CONNECTOR</b>		
TOLERANCE UNLESS OTHERWISE SPECIFIED		<b>RACO</b> South Bend, Indiana DRAWN BY: J.RICHARD APP. BY: M.C. DATE: 10/26/2015
.XX DECIMAL ±.015		
.XXX DECIMAL ±.005		
ANGLE ±2°		
SCALE: 2:3		SIZE: <b>B</b>