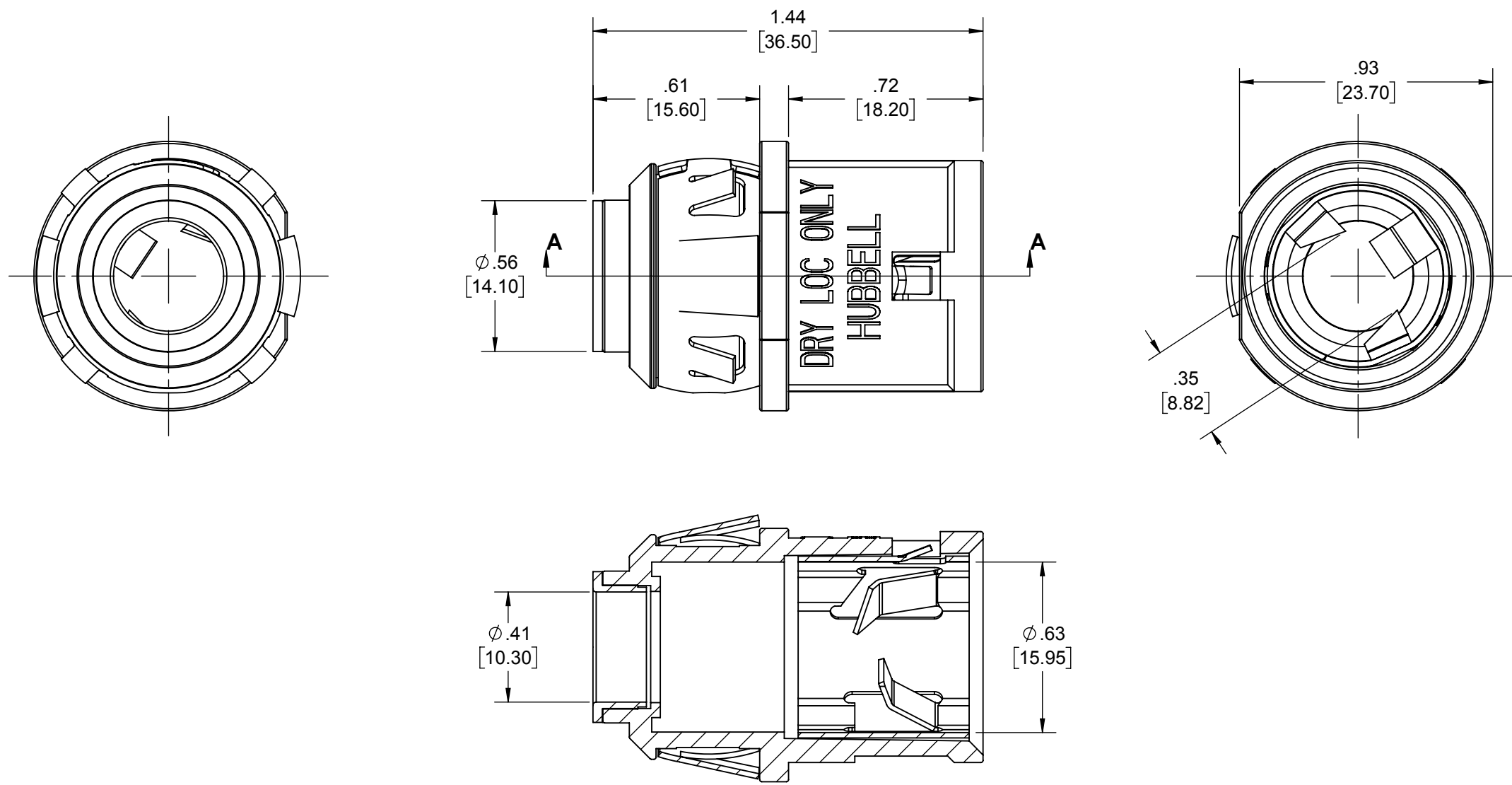
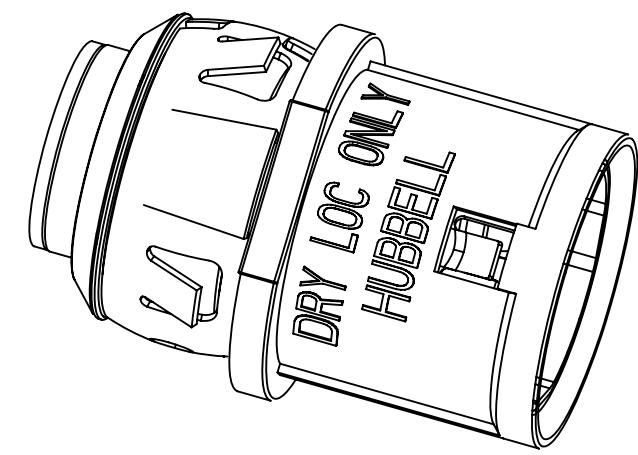


REVISIONS			
REV.	DATE	DESCRIPTION	BY:
-	06-17-19	INITIAL RELEASE	DL



SECTION A-A
SCALE 2 : 1

CABLE DIAMETER RANGE 0.470" -0.61"	
CABLE TYPE (STEEL ALUMINUM)	CABLE RANGES
MC	14/3 - 10/3
MCI-A	14/3 - 10/3
AC	14/3 - 10/3
AC HCF	14/2 - 10/3
MCI-A-HCF	12/2 - 10/3
MC-PCS (SOLID)	12/2 - 12/3
RWFMC CONDUIT	3/8" TRADE SIZE FLEX ANTI SHORT BUSHING REQUIRED

DESCRIPTION	MATERIAL	FINISH
SPRING	STEEL	GALVANIZED
3/8" CONNECTOR BODY	DIE CAST	GALVANIZED

LIST OF PARTS
THE DESIGN AND DIMENSIONS OF THE PRODUCT SHOWN ON THIS DRAWING ARE SUBJECT TO CHANGE WITHOUT NOTICE

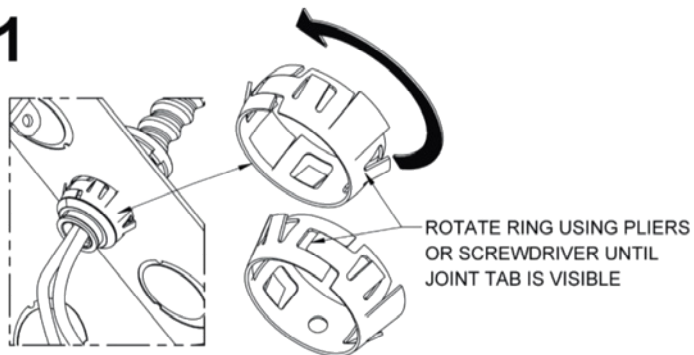
TITLE: **3/8" CONNECTOR**

TOLERANCE UNLESS OTHERWISE SPECIFIED .XX DECIMAL ±.015 .XXX DECIMAL ±.005 ANGLE ±2°			DRAWN BY: DL	SCALE: 1:1
			APP. BY: N.S.	SIZE: B
	DATE: 06-17-19			

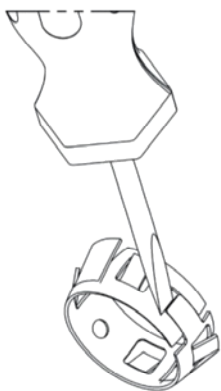
NOTES:
1. ALL DIMENSIONS ARE IN INCHES AND [MILLIMETERS]
2. cULus LISTED

38RAC/40RAC CONNECTOR REMOVAL INSTRUCTIONS

1



2

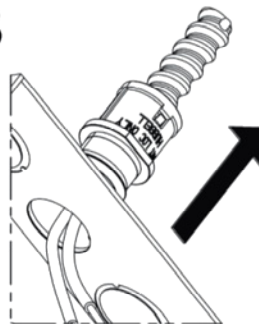


USING A SCREWDRIVER PULL
JOINT TAB UP TO REMOVE RING



Hubbell Commercial Construction
Hubbell Incorporated (Delaware)

3



AFTER RING IS REMOVED
SLIDE CONNECTOR OUT

****CONNECTOR CAN BE REUSED BY
SLIDING THE RING BACK IN PLACE****

RACO INC.
3902 W. Sample St.
P.O. Box 4002 South Bend, IN 46634
Phone: 574-234-7151
FAX: 574-283-4244

RA-351 Instr_119100 rev1