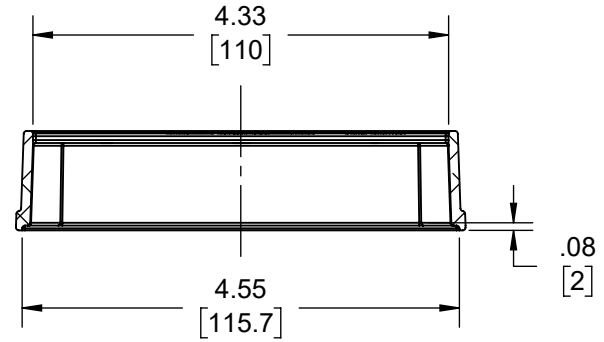


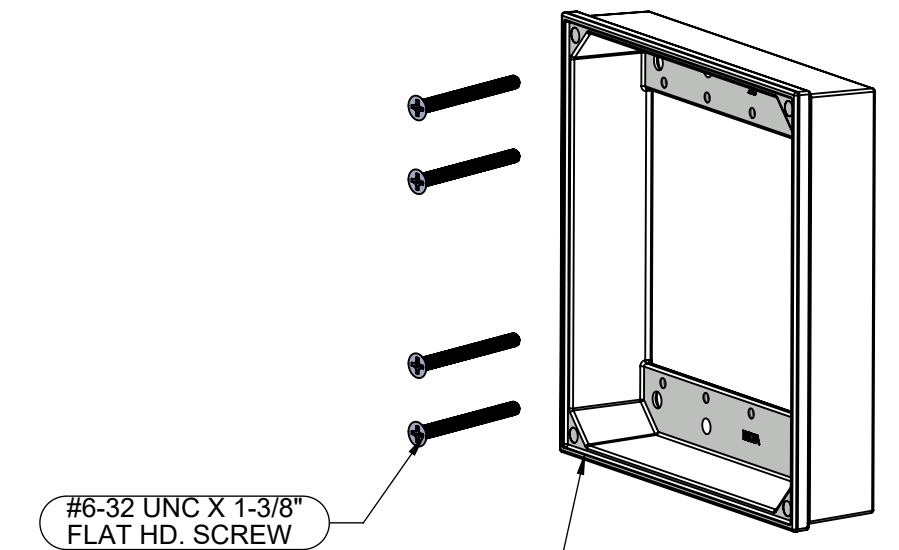
CAT. #	COLOR	HARDWARE PACK
		MOUNTING SCREW QTY.
5407-0	GRAY AKZO NOBLE# JW107N	4

REVISIONS			
REV.	DATE	DESCRIPTION	BY:
-	12-23-21	INITIAL RELEASE OF DRAWING	MS

FILE NO. :
TWO GANG EXTENSION CUS

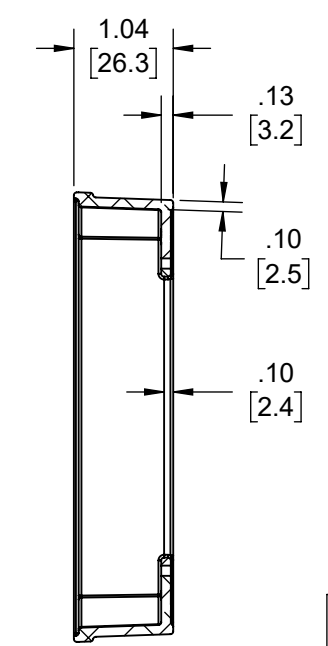
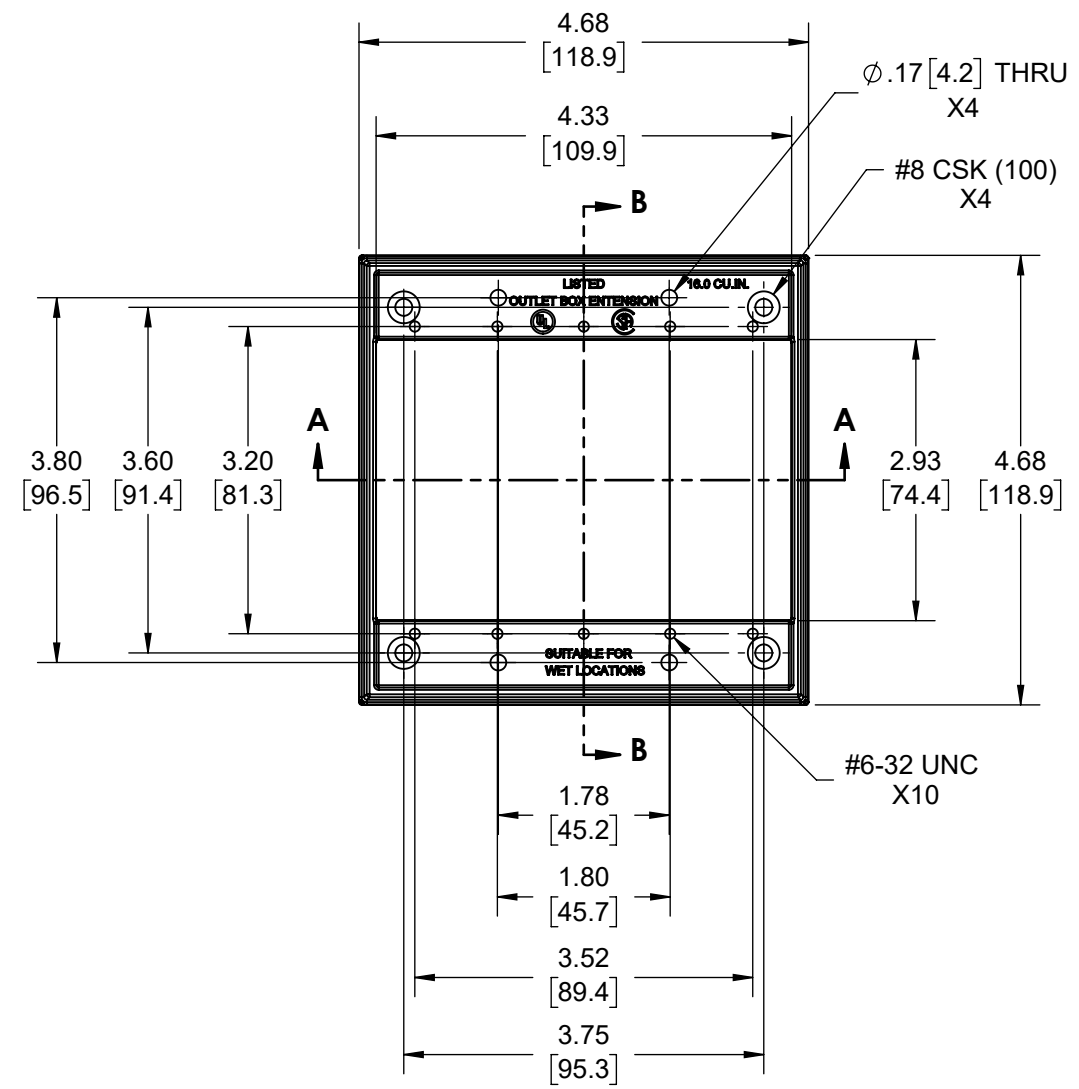


SECTION A-A

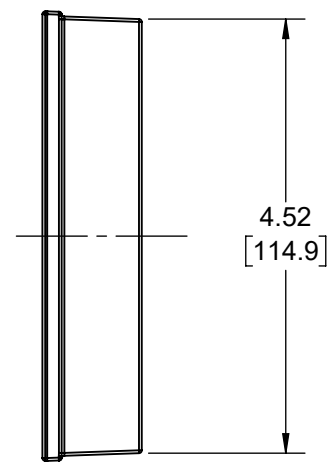


#6-32 UNC X 1-3/8"
FLAT HD. SCREW

TWO GANG EXTENSION



SECTION B-B



DESCRIPTION	MATERIAL	FINISH
MOUNTING LUG SCREW	C1022 STEEL	.00015" ZINC PASSIVATION
TWO GANG EXTENSION	DIE-CAST ALUMINUM	PAINT

THE DESIGN AND DIMENSIONS OF THE PRODUCT SHOWN ON THIS DRAWING ARE SUBJECT TO CHANGE WITHOUT NOTICE

TITLE: **TWO GANG EXTENSION**

TOLERANCE UNLESS OTHERWISE SPECIFIED			SCALE: SIZE:	
.XX DECIMAL ±.015			DRAWN BY: MS	1:2
.XXX DECIMAL ±.005			APP. BY: N.S.	
ANGLE ±2°	DATE: 12-23-21			

- NOTES:**
- ALL DIMENSIONS ARE IN INCHES AND [MILLIMETERS]
 - BOX VOLUME: 16.00 IN³ [262.2 CM³]
 - UL, CSA & NEMA LISTED.

DIMENSION SHEET FOR CAT. NO. **B**

8.5111in