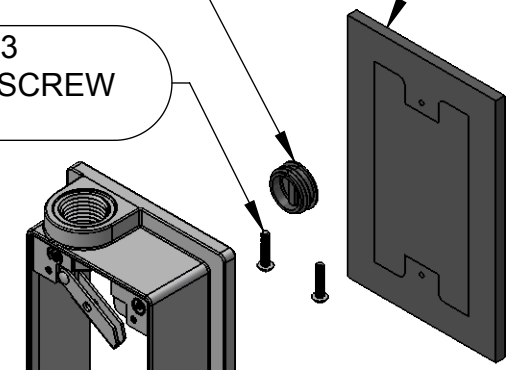


CAT. #	COLOR	BOX VOLUME	ØD
5412-0	GRAY AKZO NOBEL# JW107N	13.80 IN <sup>3</sup> [226.1 CM <sup>3</sup> ]	.61 [15.5]
5413-0	GRAY AKZO NOBEL# JW107N	13.80 IN <sup>3</sup> [226.1 CM <sup>3</sup> ]	.80 [20.3]

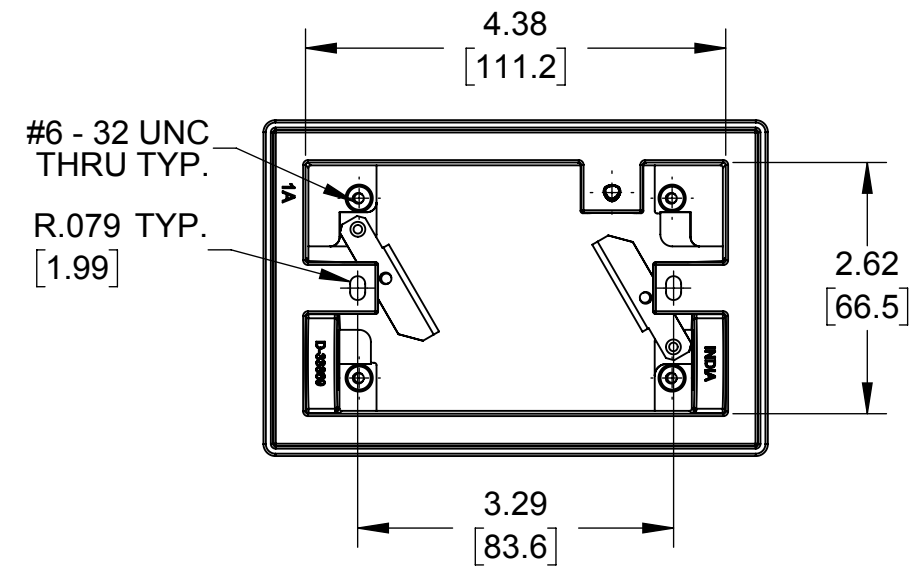
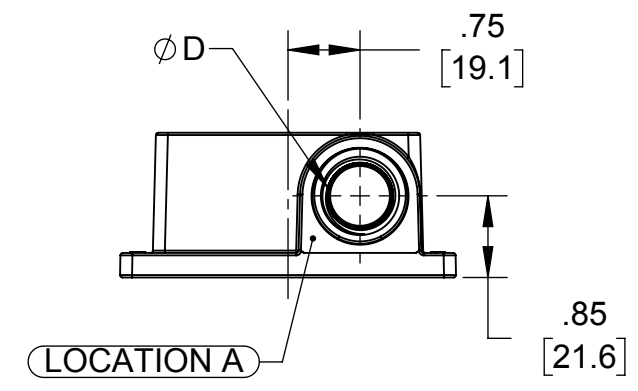
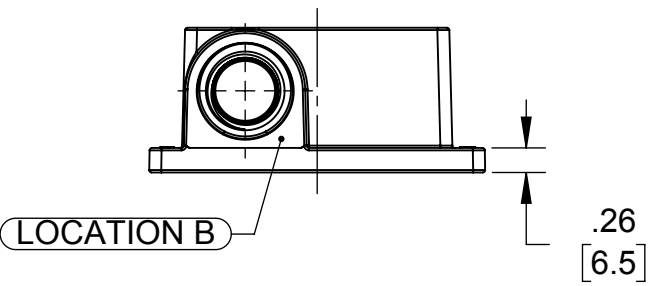
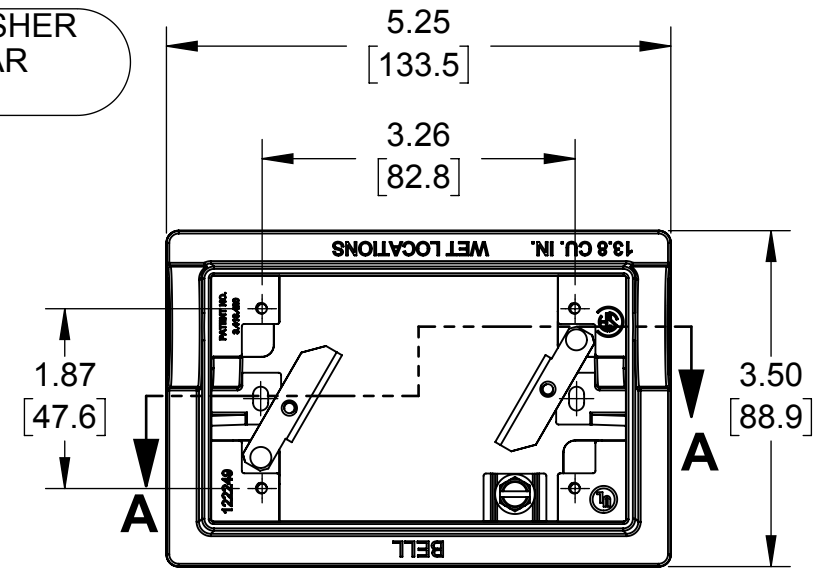
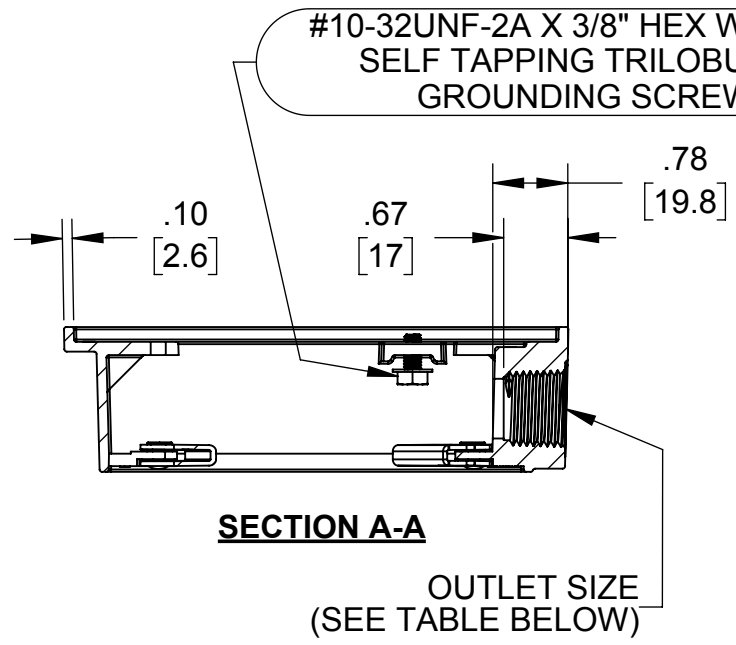
CLOSURE PLUG (QTY. 1)

#6 - 32 UNC - 2A X .63  
BUTTON HEAD MACHINE SCREW  
(QTY. 2)

GASKET



EXTENSION ADAPTER



#6 - 32 UNC  
THRU TYP.  
R.079 TYP.  
[1.99]

LIST OF PARTS		
DESCRIPTION	MATERIAL	FINISH
EXTENSION ADAPTOR	DIE-CAST ALUMINUM	PAINT
GROUNDING SCREW	C1022 STEEL	GREEN ZINC AERODITE
CLOSURE PLUG	LEXAN/ ZINC	N/A
BUTTON HEAD MACHINE SCREW	C1010 STEEL	.00015" ZINC PASSIVATION
GASKET	P.E. FOAM	BLACK

GRAY BOX	CLOSURE PLUG 1/2" & 3/4" NPT	
	MATERIAL	FINISH
PRIMARY	LEXAN	GRAY
ALTERNATE	ZINC	NATURAL

SYM.	REVISION DESCRIPTION	APP	DATE
	INITIAL RELEASE	S.J.	07/06/2017

THE DESIGN AND DIMENSIONS OF THE PRODUCT SHOWN ON THIS DRAWING ARE SUBJECT TO CHANGE WITHOUT NOTICE

TITLE:  
**SWING-ARM EXTENSION ADAPTER WITH 2 OUTLETS**

NOTES:  
1. ALL DIMENSIONS ARE IN INCHES AND [MILLIMETERS].  
2. BOX VOLUME: SEE TABLE.  
3. UL & CSA LISTED.

OUTLETS			
CAT. #	OUTLET SIZE	OUTLETLOCATION	OUTLET QTY.
5412-0	1/2" - 14 NPT	A & B	1
5413-0	3/4" - 14 NPT	A & B	1

TOLERANCE UNLESS OTHERWISE SPECIFIED  
.XX DECIMAL ±.015  
.XXX DECIMAL ±.005  
ANGLE ±2°

**RACO**  
South Bend, Indiana

DRAWN BY: M.M.  
APP. BY: S.J.  
DATE: 07/06/2017

SCALE: 1:2