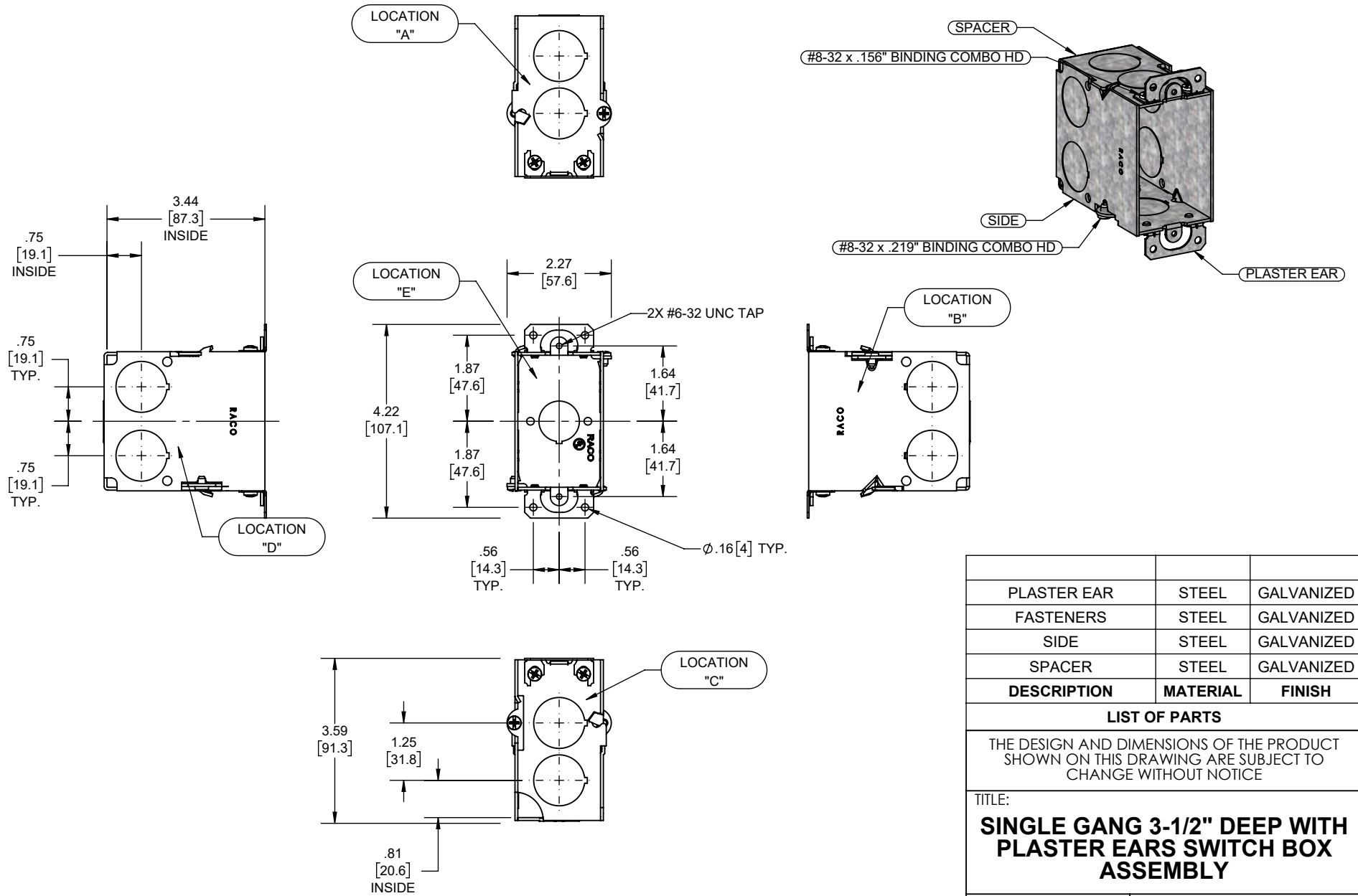


REVISIONS			
REV.	DATE	DESCRIPTION	BY
-	12-08-21	INITIAL RELEASE	RMV



- NOTES:
- ALL DIMENSIONS ARE IN INCHES AND [MILLIMETERS]
 - BOX VOLUME: 18.0 IN³ [295.0 CM³]
 - UL LISTED



KNOCKOUTS		
TRADE SIZE	LOCATION	QTY.
1/2" KO	E	1
3/4" KO	A, B, C, D	2

DESCRIPTION	MATERIAL	FINISH
PLASTER EAR	STEEL	GALVANIZED
FASTENERS	STEEL	GALVANIZED
SIDE	STEEL	GALVANIZED
SPACER	STEEL	GALVANIZED

LIST OF PARTS

THE DESIGN AND DIMENSIONS OF THE PRODUCT SHOWN ON THIS DRAWING ARE SUBJECT TO CHANGE WITHOUT NOTICE

TITLE:
SINGLE GANG 3-1/2" DEEP WITH PLASTER EARS SWITCH BOX ASSEMBLY

TOLERANCE UNLESS OTHERWISE SPECIFIED			SCALE:		
.XX DECIMAL ± .015	.XXX DECIMAL ± .005		DRAWN BY:		RMV
ANGLE ± 2°		APP. BY:	N.S.	DATE:	12-08-21