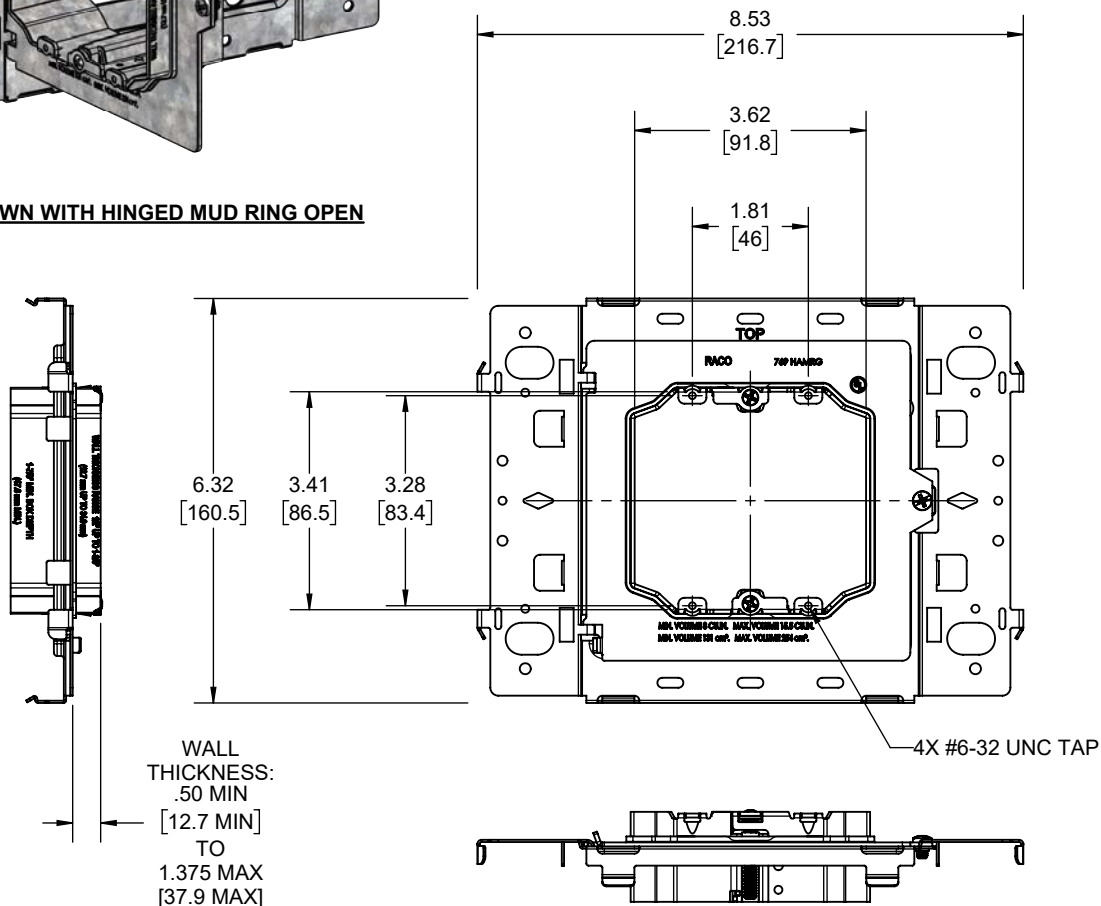


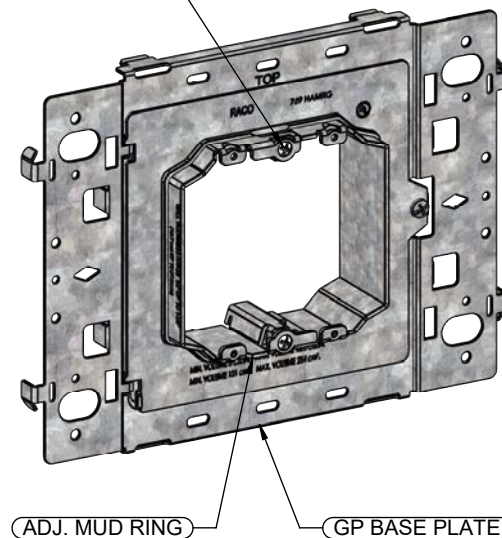
SHOWN WITH HINGED MUD RING OPEN



- NOTES:
1. ALL DIMENSIONS ARE IN INCHES AND [MILLIMETERS]
  2. VOLUME: 8.0 IN<sup>3</sup> [131.0 CM<sup>3</sup>] MIN  
15.5 IN<sup>3</sup> [254.0 CM<sup>3</sup>] MAX
  3. UL LISTED
  4. FOR INSTRUCTION SHEET SCROLL DOWN TO NEXT SHEET

REVISIONS			
REV.	DATE	DESCRIPTION	BY
-	02-14-24	INITIAL RELEASE	RMV

#10-24 x 1-1/4 PHILLIPS MACHINE SCREW



DESCRIPTION	MATERIAL	FINISH
FASTENERS	STEEL	GALVANIZED
ADJ. MUD RING	STEEL	GALVANIZED
GP BASE PLATE	STEEL	GALVANIZED

LIST OF PARTS

THE DESIGN AND DIMENSIONS OF THE PRODUCT SHOWN ON THIS DRAWING ARE SUBJECT TO CHANGE WITHOUT NOTICE

TITLE:

**G SERIES PLATE W/ DOUBLE GANG HINGED MUD RING**

TOLERANCE UNLESS OTHERWISE SPECIFIED

.XX DECIMAL ± .015  
.XXX DECIMAL ± .005  
ANGLE ± 2°



DRAWN BY:	RMV	SCALE:	SIZE:
APP. BY:	N.S.		
DATE:	02-14-24	1:3	A

FILE NO.: 769HAMRG CUS

DIMENSION SHEET FOR CAT. NO. 769HAMRG

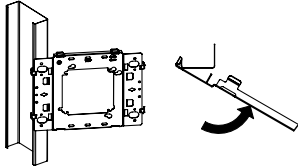
8.5in 1in

# INSTRUCTION SHEET

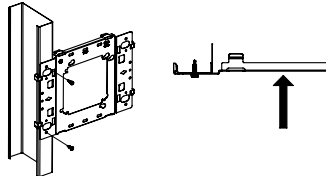
## MOUNTING BRACKET "9030GP"

### STUD MOUNTING

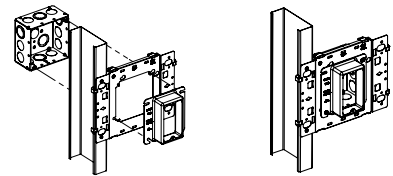
1. Place bracket over stud at an angle as shown



2. Push it until it snaps into place and attach it with (2) screws (not included)

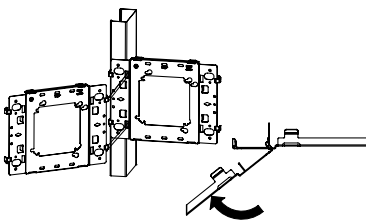


3. Install electrical box (not included) and mud ring (not included)

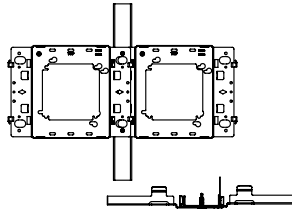


### SIDE BY SIDE STUD MOUNTING

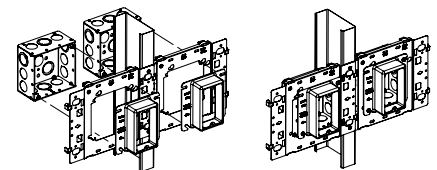
1. Place bracket over stud as shown below



2. Push it until it snaps into place and attach it with (2) screws (not included)

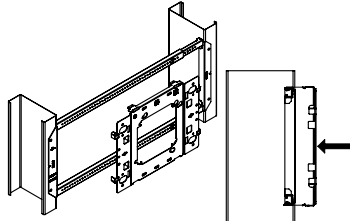


3. Install electrical boxes (not included) and mud rings (not included)

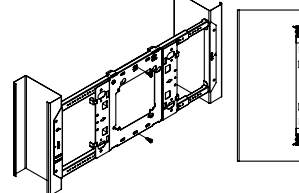


### BRACE MOUNTING

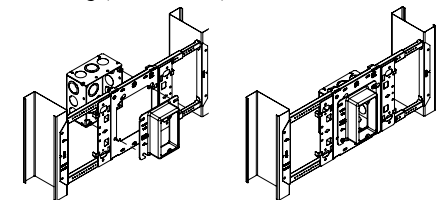
1. Insert bracket on brace as shown below



2. Push it until it snaps into place and attach it with (2) screws (not included)



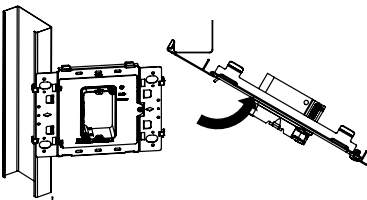
3. Install electrical box (not included) and mud ring (not included)



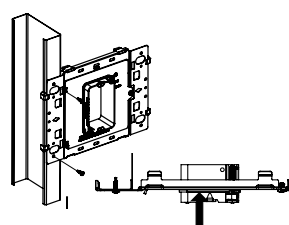
## MOUNTING BRACKET WITH HINGED ADJUSTABLE MUD RING "768HAMRG, 768HAMRGH & 769HAMRG"

### STUD MOUNTING

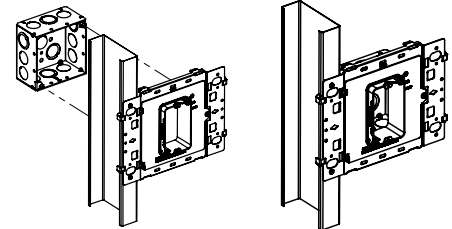
1. Place bracket over stud at an angle as shown



2. Push it until it snaps into place and attach it with (2) screws (not included)

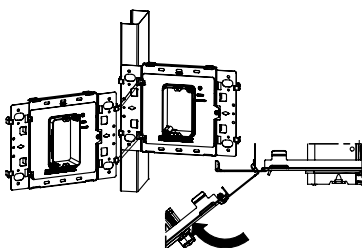


3. Install electrical box (not included)

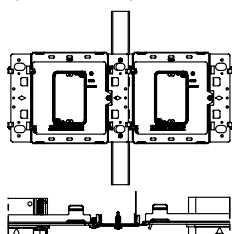


### SIDE BY SIDE STUD MOUNTING

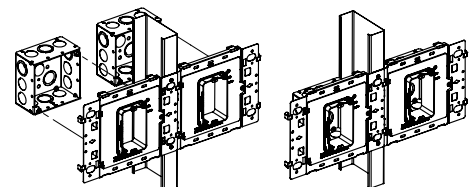
1. Place bracket over stud as shown below



2. Push it until it snaps into place and attach it with (2) screws (not included)



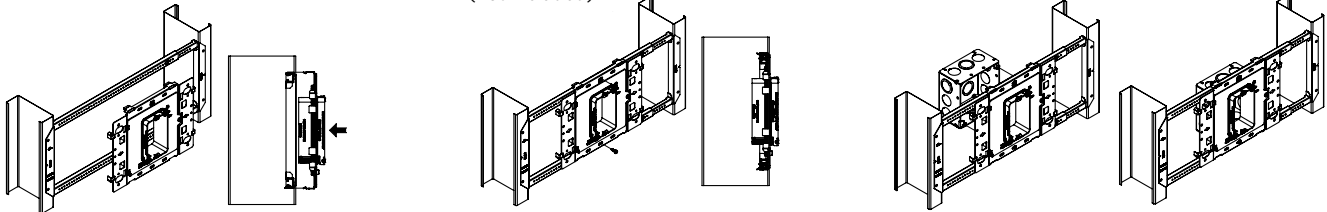
3. Install electrical boxes (not included)



## INSTRUCTION SHEET

### BRACE MOUNTING (TO BE USED ONLY WITH BRACE #9030G)

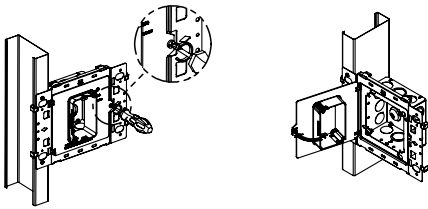
1. Insert bracket on brace as shown below
2. Push it until it snaps into place and attach it with (2) screws (not included)
3. Install electrical box (not included)



### OPERATION INSTRUCTIONS OF THE HINGED MUD RING

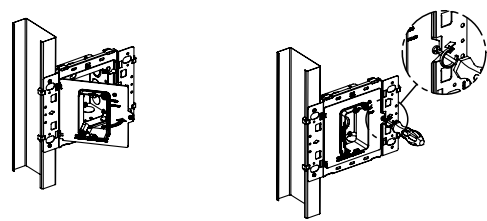
#### TO OPEN

1. Loosen the center screw
2. Pull the hinged cover



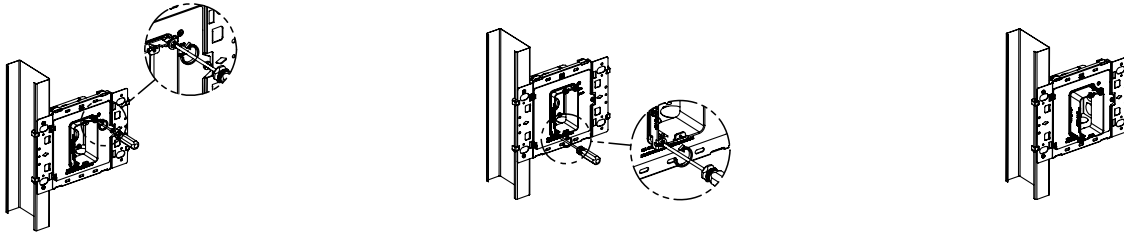
#### TO CLOSE

1. Push the hinged cover
2. Tighten the center screw



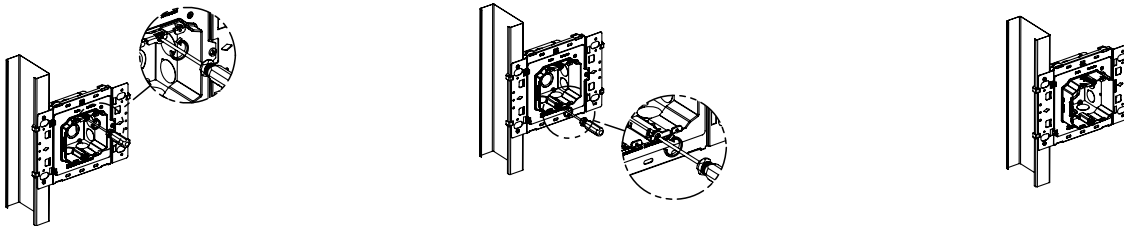
### OPERATION INSTRUCTIONS OF THE ADJUSTABLE SINGLE GANG MUD RINGS

1. Loosen corner screw (Tighten screw to decrease the depth of the mud ring)
2. Loosen opposite corner screw (Tighten screw to decrease the depth of the mud ring)



### OPERATION INSTRUCTIONS OF THE ADJUSTABLE DOUBLE GANG MUD RINGS

1. Loosen top screw (Tighten screw to decrease the depth of the mud ring)
2. Loosen bottom screw (Tighten screw to decrease the depth of the mud ring)



## RACO® ADJUSTABLE OPEN CENTER BRACKET 9030G

To retain cUL listing in Canada, a #995 or other "Far side support bracket" must be used

1. Slide open center bracket to desired opening between studs
2. Attach open center bracket to studs with (4) screws
3. Install box and plate as shown. (\*\*Box and plate not included\*\*)
4. If required, install a far side support bracket (\*\*Not included\*\*)

