

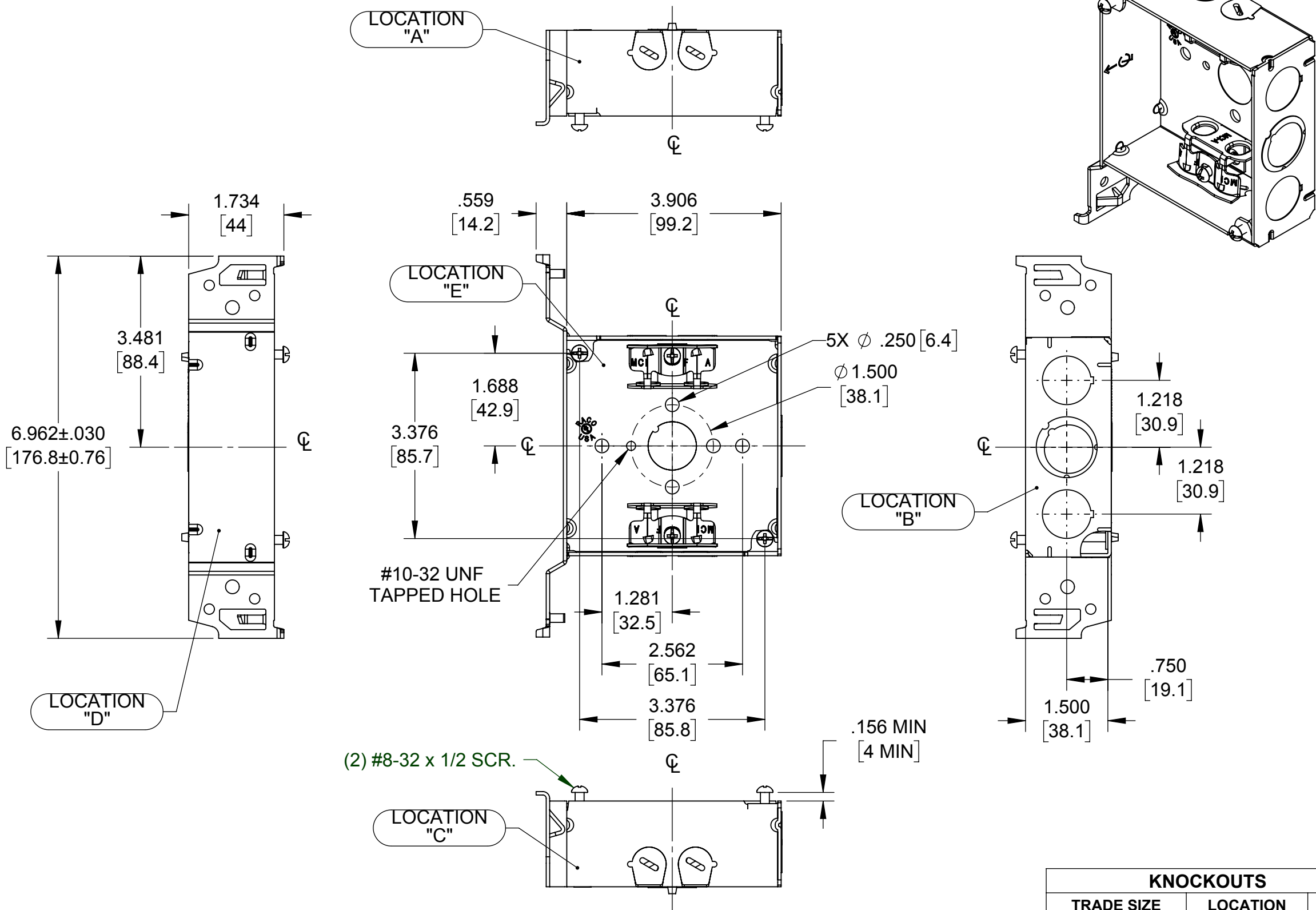
X CLAMP ACCEPTS ALL OF THE FOLLOWING WIRE TYPES:

STEEL & ALUMINUM BX: .444" [11.27 MM] O.D. TO LARGEST THAT WILL FIT IN CLAMP

STEEL MCI: .425" [10.79 MM] TO .600" [15.24 MM] O.D.

ALUMINUM MCI: .400" [10.16 MM] TO .495" [12.57 MM] O.D.

FLEXIBLE METAL CONDUIT: 3/8" TRADE SIZE



NOTES:

1. ALL DIMENSIONS ARE IN INCHES AND [MILLIMETERS]
2. BOX VOLUME: 21.0 IN³ [344.1 CM³]
3. UL LISTED

KNOCKOUTS		
TRADE SIZE	LOCATION	QTY.
1/2" KO	E	1
1/2" KO	B	2
(1/2"-3/4") TKO®	B	1

LIST OF PARTS		
DESCRIPTION	MATERIAL	FINISH
BOX	STEEL	GALVANIZED
FASTENERS	STEEL	GALVANIZED
BRACKETS	STEEL	GALVANIZED

SYMBOL	REVISION DESCRIPTION	APP	DATE
	INITIAL RELEASE	RMV	06-07-17

THE DESIGN AND DIMENSIONS OF THE PRODUCT SHOWN ON THIS DRAWING ARE SUBJECT TO CHANGE WITHOUT NOTICE

TITLE: **4" SQ. 1-1/2" DEEP WELDED BOX W/ FS BRACKET & 1/2" KOS & 3/4" TKO**

TOLERANCE UNLESS OTHERWISE SPECIFIED		RACO South Bend, Indiana	SCALE: 1:2
.XX DECIMAL ±.015	DRAWN BY: RMV		
.XXX DECIMAL ±.005	APP. BY: RMV		
ANGLE ±2°	DATE: 06-07-17		