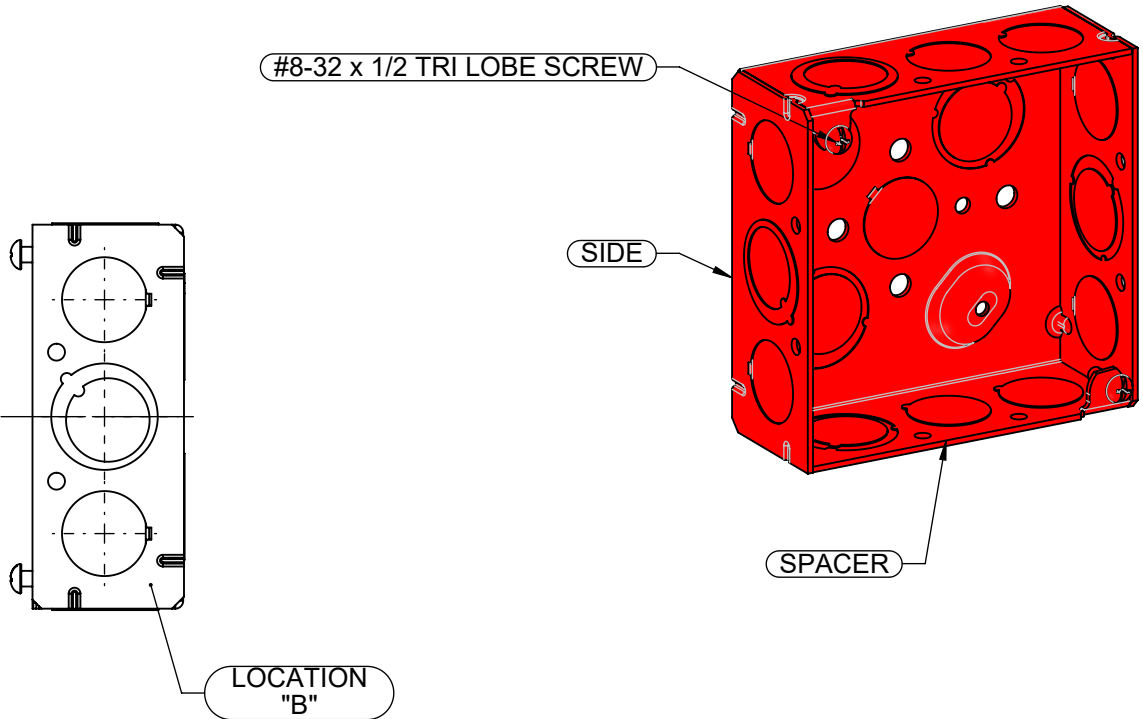
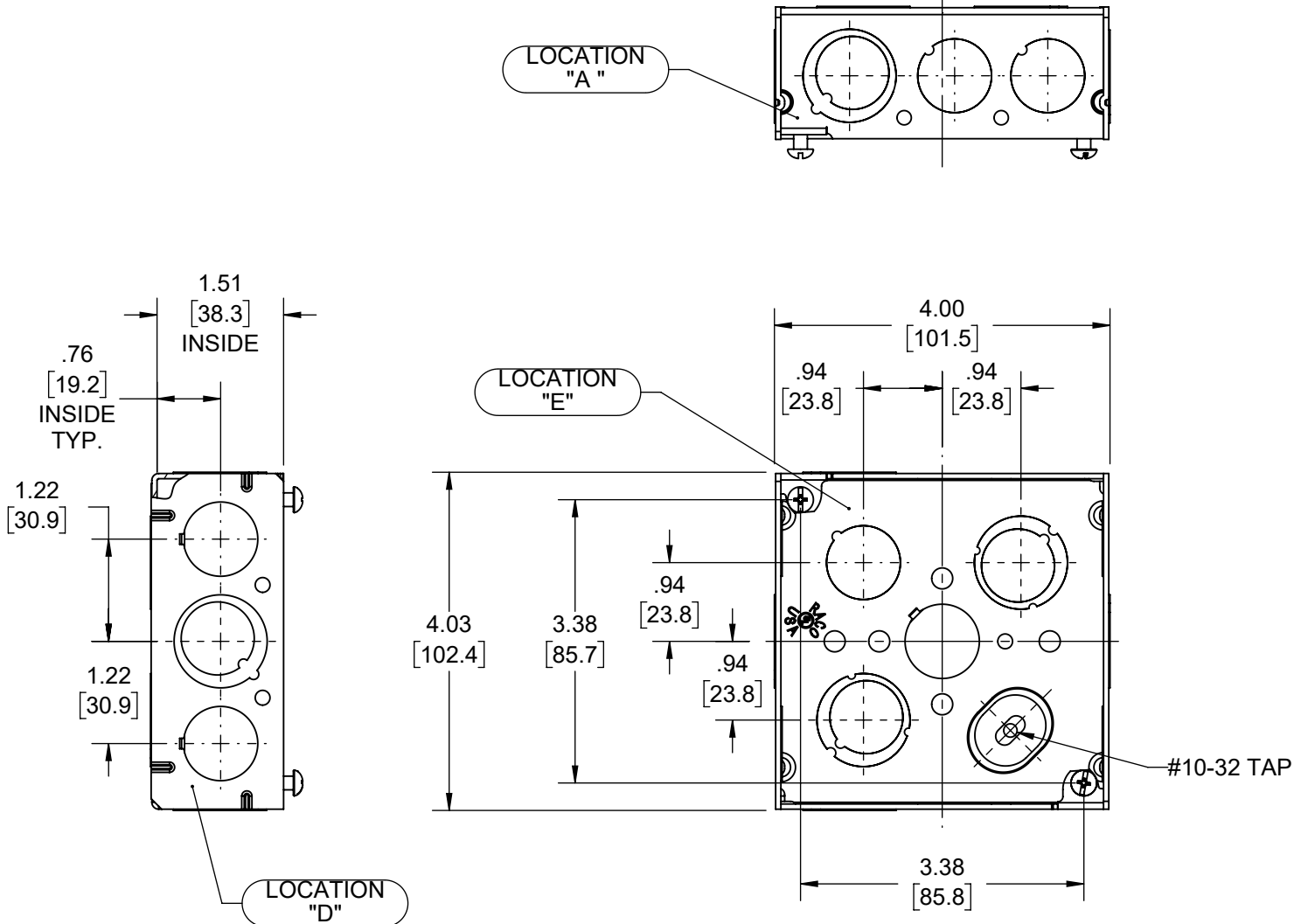


REVISIONS			
REV.	DATE	DESCRIPTION	BY
-	10-13-16	INITIAL RELEASE	JR

FILE NO.:
911-9 CUS

**EXTERIOR IS FULLY
PAINTED RED**



- NOTES:
 1. ALL DIMENSIONS ARE IN INCHES AND [MILLIMETERS]
 2. BOX VOLUME: 21.0 IN³ [344.1] CM³
 3. UL@ LISTED

KNOCKOUTS		
TRADE SIZE	LOCATION	QTY.
(1/2"-3/4") TKO®	E	2
(1/2"-3/4") TKO®	A, B, C, D	1
1/2" KO	A, B, C, D, E	2

DESCRIPTION	MATERIAL	FINISH
FASTENERS	STEEL	GALVANIZED
SIDE	STEEL	GALVANIZED
SPACER	STEEL	GALVANIZED

LIST OF PARTS
 THE DESIGN AND DIMENSIONS OF THE PRODUCT SHOWN ON THIS DRAWING ARE SUBJECT TO CHANGE WITHOUT NOTICE
 TITLE:
4" SQ, 1.5" DP (SIDES: CENTERED .75"TKO®, (2).5"KO'S) RED PAINT

TOLERANCE UNLESS OTHERWISE SPECIFIED		DRAWN BY: JR	SCALE: 1:2
.XX DECIMAL ±.015		APP. BY: N.S.	DATE: 10-13-16
.XXX DECIMAL ±.005 ANGLE ±2°			

DIMENSION SHEET FOR CAT. NO.
911-9

SIZE: **B**

1/16" x 1/16"