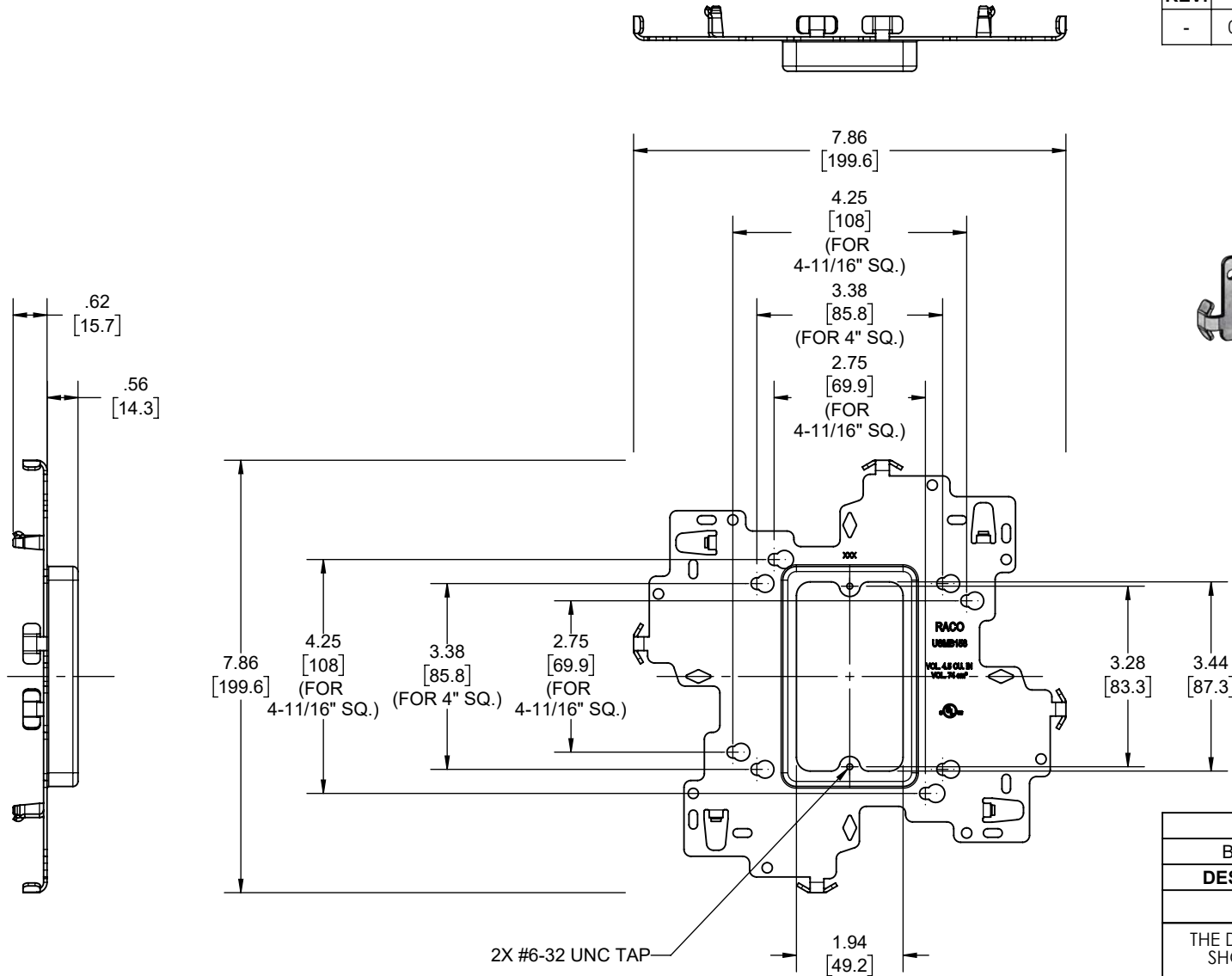
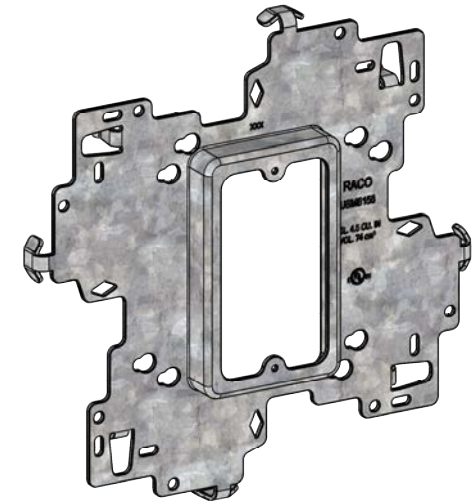


REVISIONS

REV.	DATE	DESCRIPTION	BY
-	02-06-24	INITIAL RELEASE	RMV

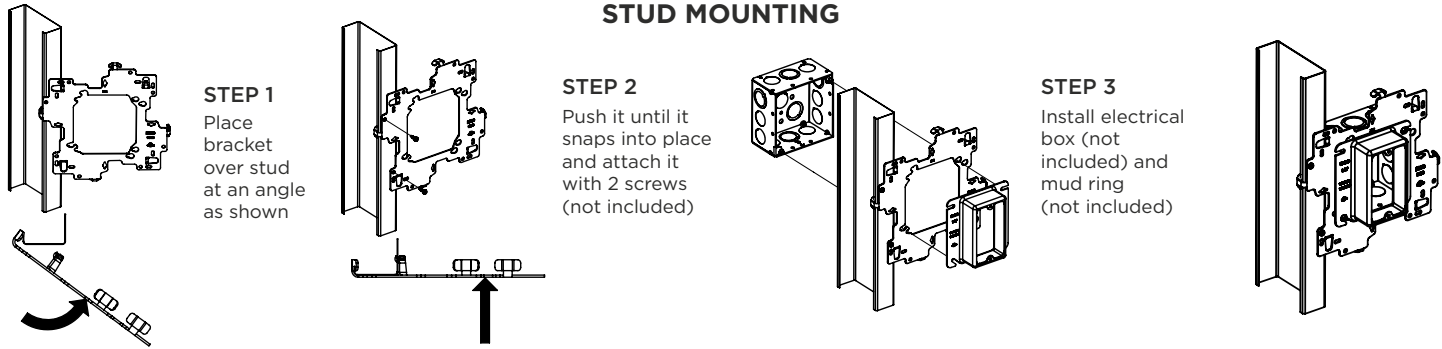


- NOTES:
- ALL DIMENSIONS ARE IN INCHES AND [MILLIMETERS]
 - ACCEPTS 4" SQUARE AND 4-11/16" SQUARE BOXES
 - cULus LISTED
 - FOR INSTRUCTION SHEET SCROLL DOWN TO NEXT SHEET

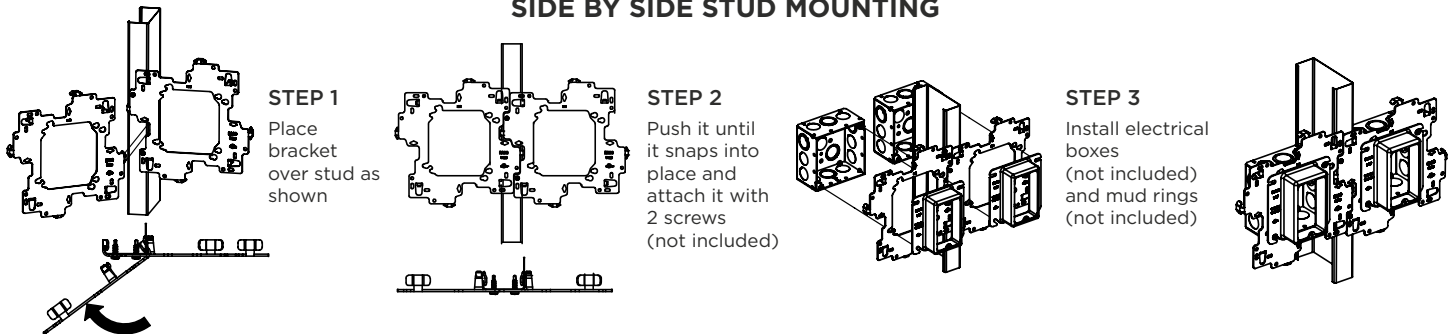
BRACKET	STEEL	GALVANIZED
DESCRIPTION	MATERIAL	FINISH
LIST OF PARTS		
THE DESIGN AND DIMENSIONS OF THE PRODUCT SHOWN ON THIS DRAWING ARE SUBJECT TO CHANGE WITHOUT NOTICE		
TITLE:		
STUD MOUNT SINGLE GANG 3/4" RAISED COVER		
TOLERANCE UNLESS OTHERWISE SPECIFIED		
.XX DECIMAL ± .015		SCALE: 1:3
.XXX DECIMAL ± .005		
ANGLE ± 2°		
DRAWN BY: RMV	DATE: 02-06-24	SIZE: A
APP. BY: N.S.		

UNIVERSAL STUD MOUNT BRACKET "USMB" Instruction Sheet

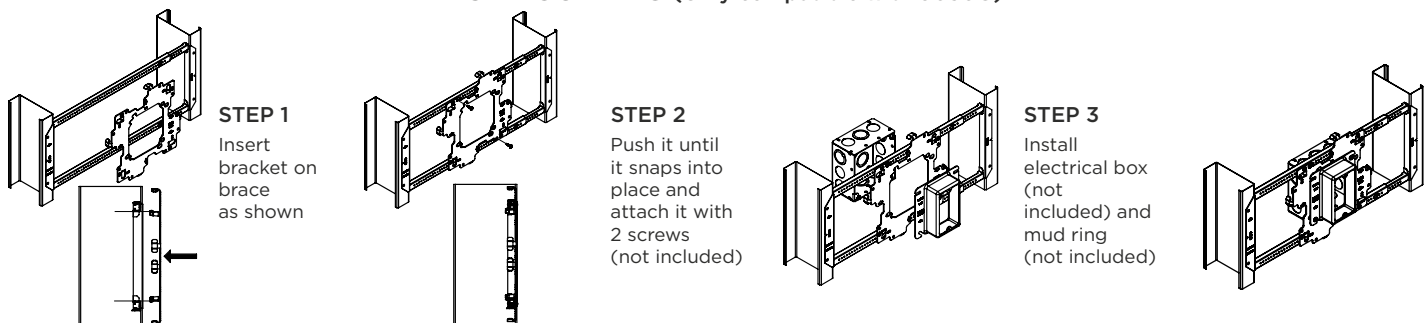
STUD MOUNTING



SIDE BY SIDE STUD MOUNTING

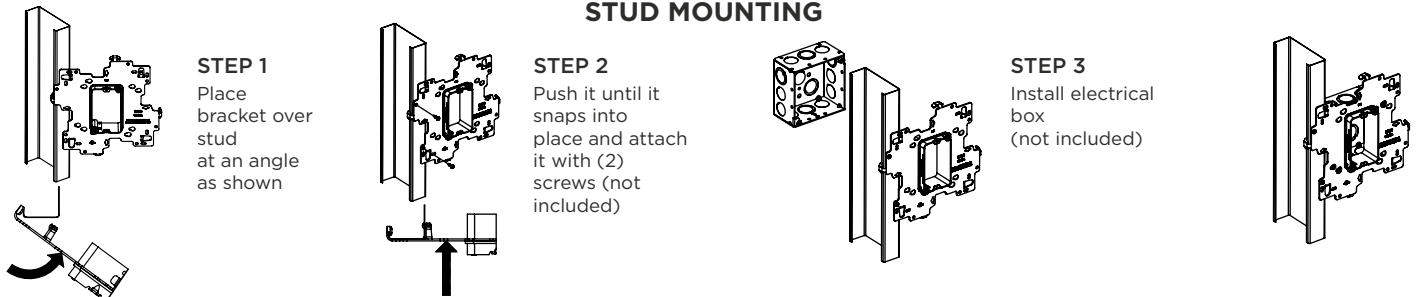


BRACE MOUNTING (Only compatible with 9030G)

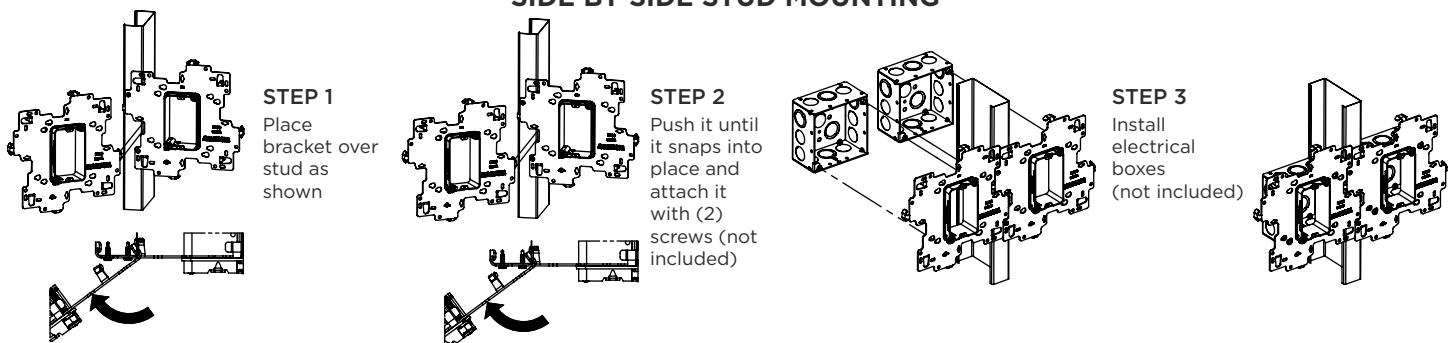


UNIVERSAL STUD MOUNT BRACKET "USMB1A & USMB2A" Instruction Sheet

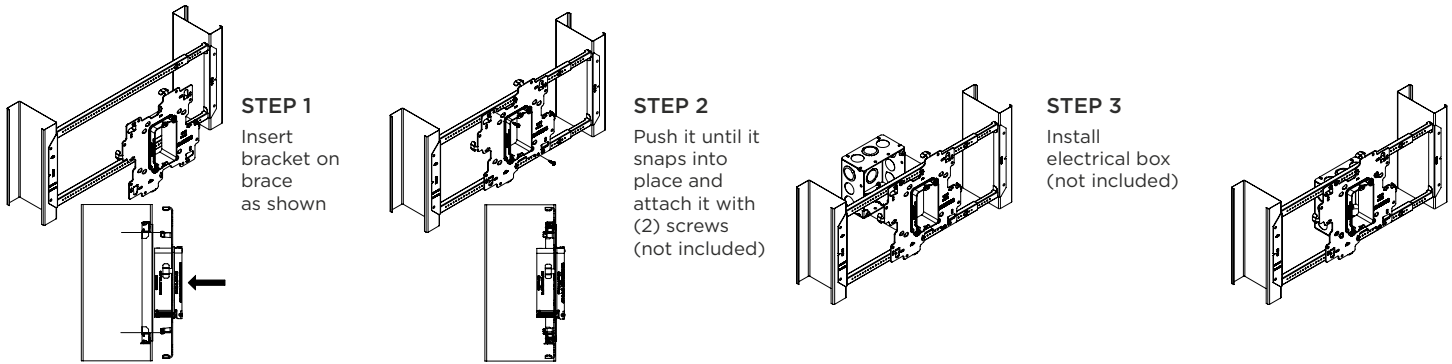
STUD MOUNTING



SIDE BY SIDE STUD MOUNTING

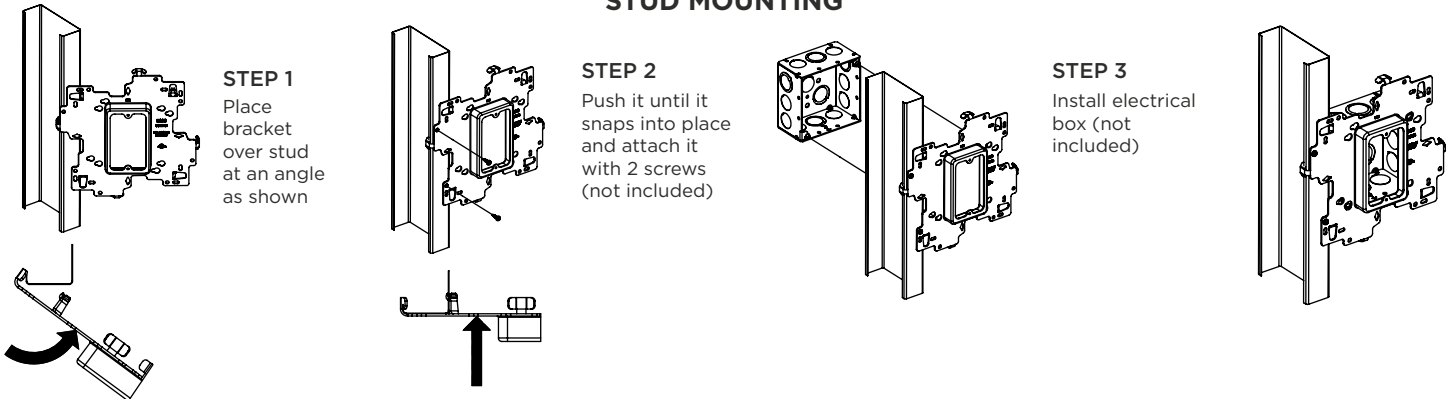


BRACE MOUNTING

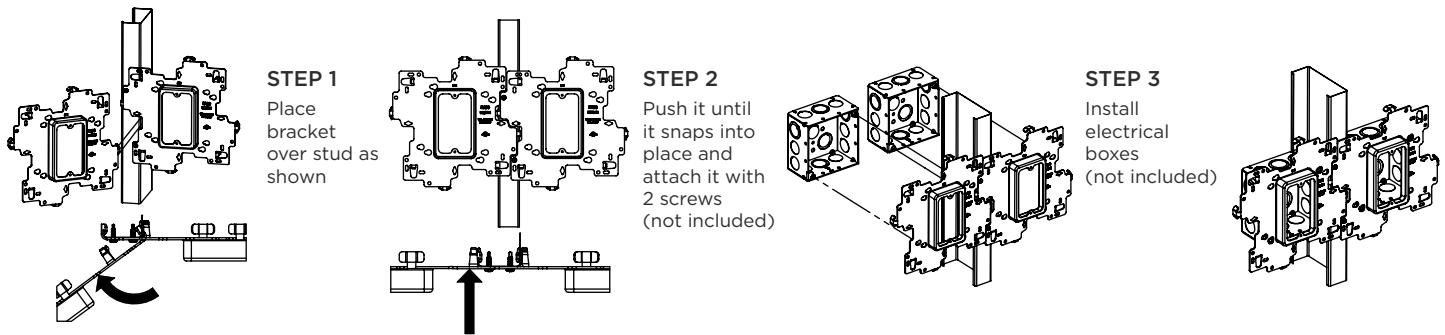


UNIVERSAL STUD MOUNT BRACKET “USMB134, USMB158, USMB234 & USMB258” Instruction Sheet

STUD MOUNTING



SIDE BY SIDE STUD MOUNTING



BRACE MOUNTING

