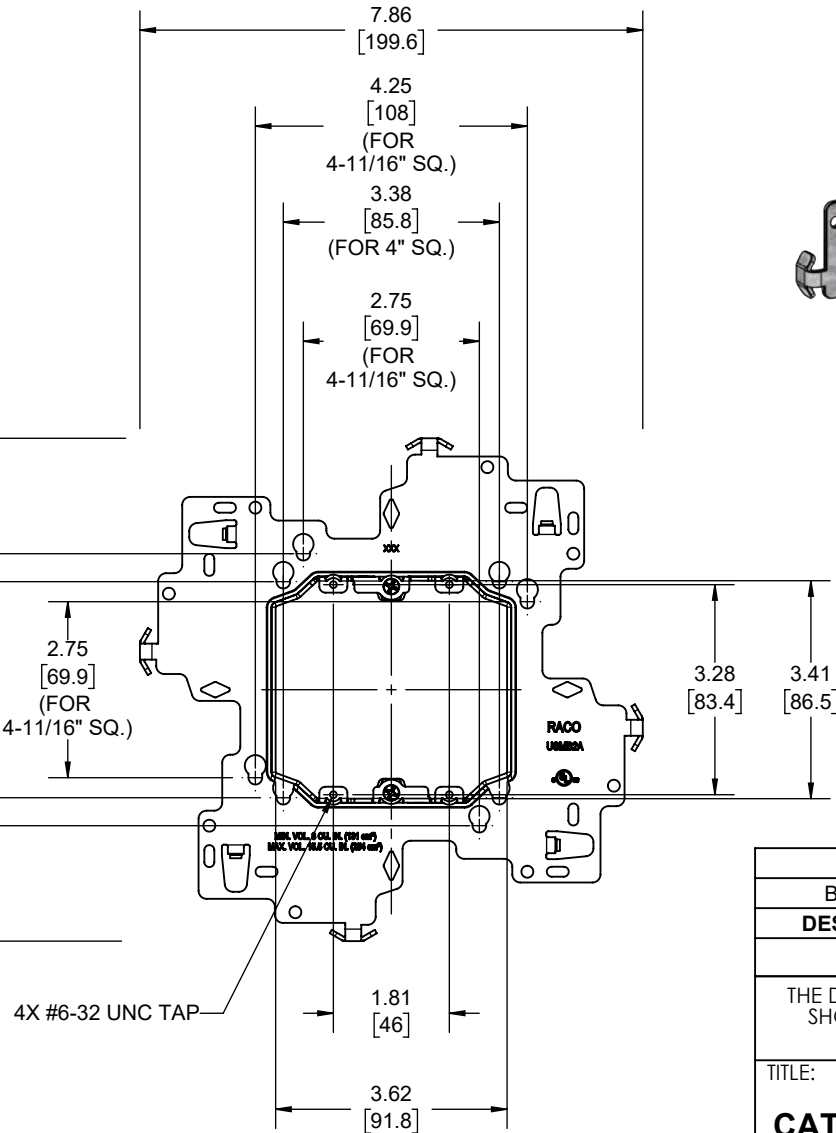
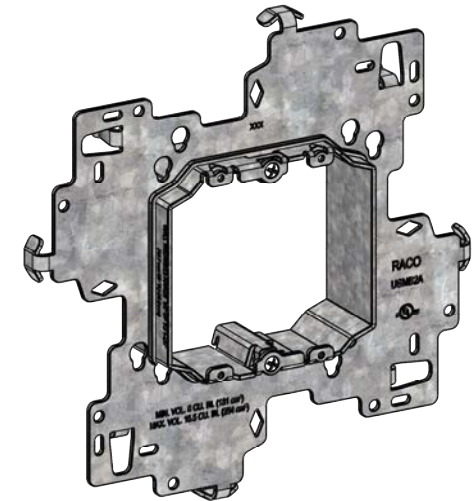


REVISIONS

REV.	DATE	DESCRIPTION	BY
-	02-06-24	INITIAL RELEASE	RMV



4X #6-32 UNC TAP

.93 MAX
[23.6 MAX]

.62
[15.7]

WALL
THICKNESS:
.50
[12.7]
TO
1.375
[34.9]

7.86
[199.6]

4.25
[108]
(FOR
4-11/16" SQ.)

3.38
[85.8]
(FOR 4" SQ.)

2.75
[69.9]
(FOR
4-11/16" SQ.)


3.28
[83.4]

3.41
[86.5]

1.81
[46]

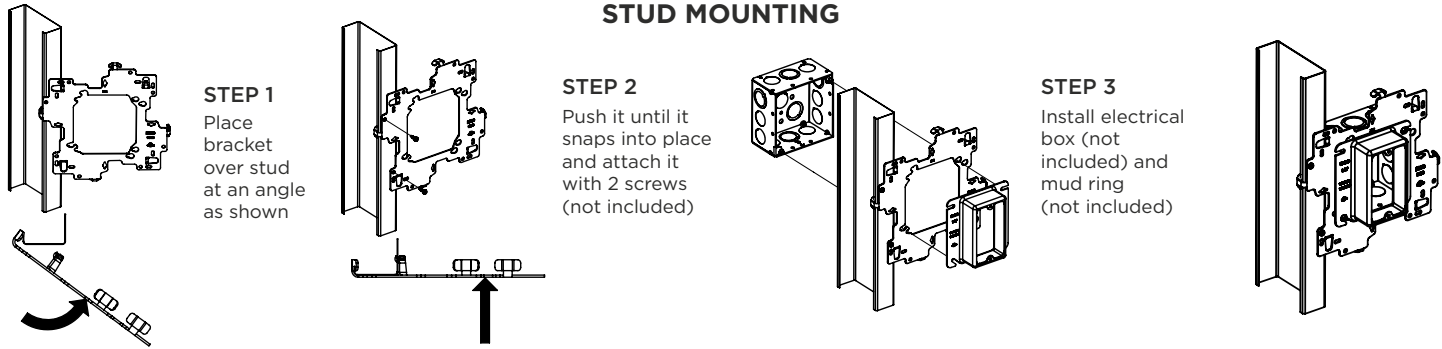
3.62
[91.8]

- NOTES:
1. ALL DIMENSIONS ARE IN INCHES AND [MILLIMETERS]
 2. ACCEPTS 4" SQUARE AND 4-11/16" SQUARE BOXES
 3. cULus LISTED
 4. FOR INSTRUCTION SHEET SCROLL DOWN TO NEXT SHEET

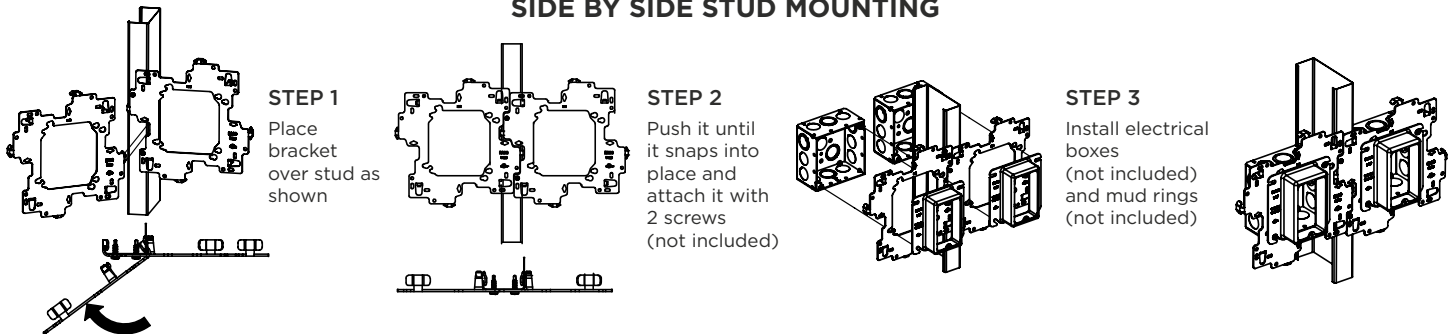
BRACKET	STEEL	GALVANIZED	
DESCRIPTION	MATERIAL	FINISH	
LIST OF PARTS			
THE DESIGN AND DIMENSIONS OF THE PRODUCT SHOWN ON THIS DRAWING ARE SUBJECT TO CHANGE WITHOUT NOTICE			
TITLE: CAT. USMB2A FINAL ASSEMBLY			
<u>TOLERANCE UNLESS OTHERWISE SPECIFIED</u> .XX DECIMAL ± .015 .XXX DECIMAL ± .005 ANGLE ± 2°			
	DRAWN BY:	RMV	SCALE: 1:3
	APP. BY:	N.S.	
	DATE:	02-06-24	

UNIVERSAL STUD MOUNT BRACKET "USMB" Instruction Sheet

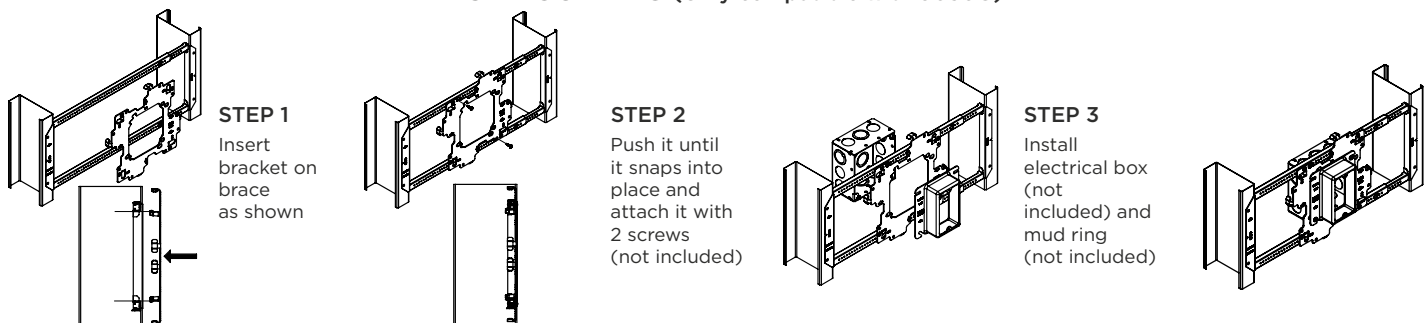
STUD MOUNTING



SIDE BY SIDE STUD MOUNTING

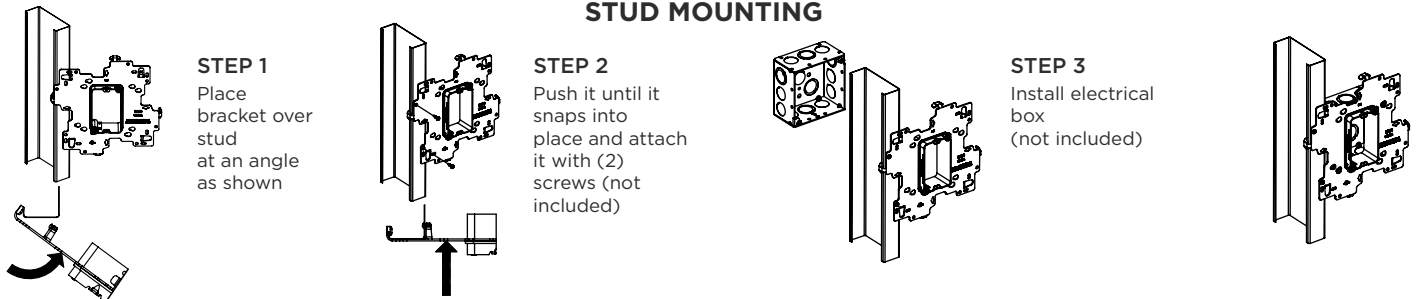


BRACE MOUNTING (Only compatible with 9030G)

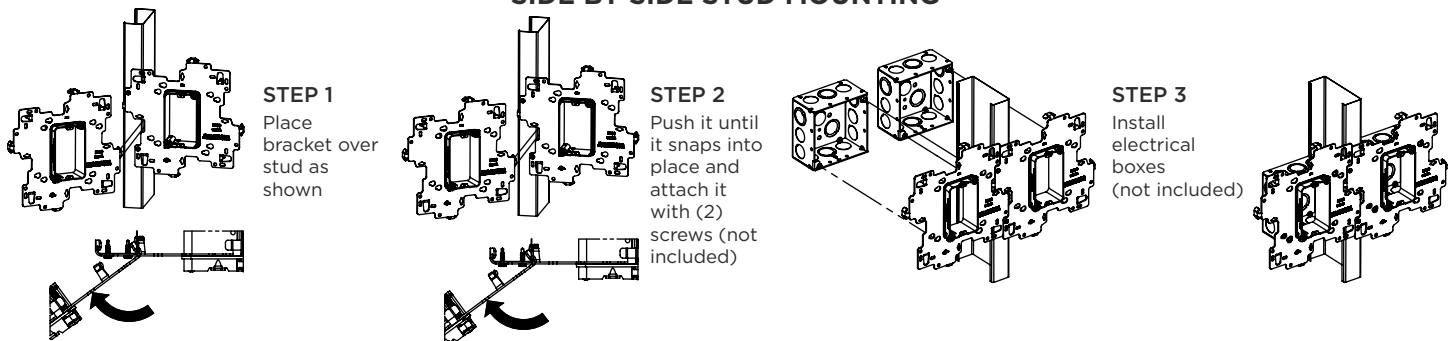


UNIVERSAL STUD MOUNT BRACKET "USMB1A & USMB2A" Instruction Sheet

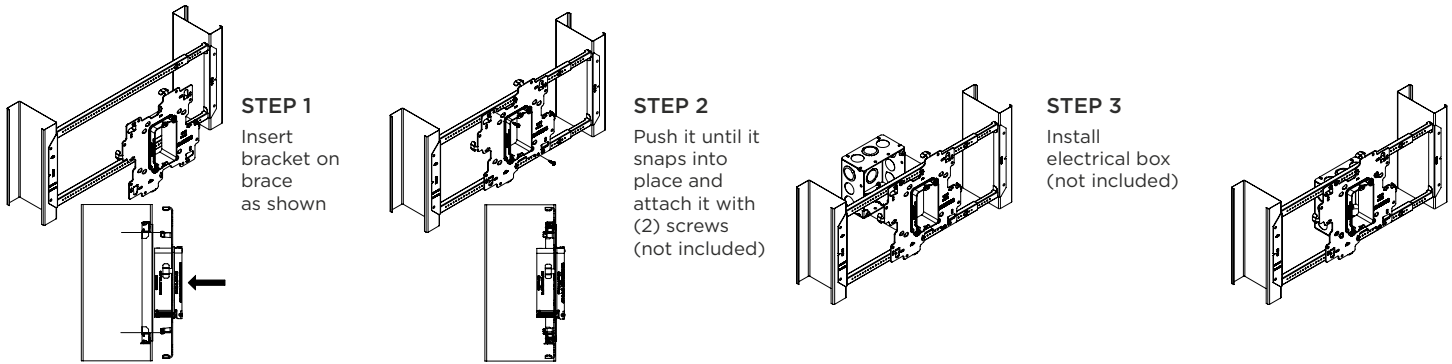
STUD MOUNTING



SIDE BY SIDE STUD MOUNTING

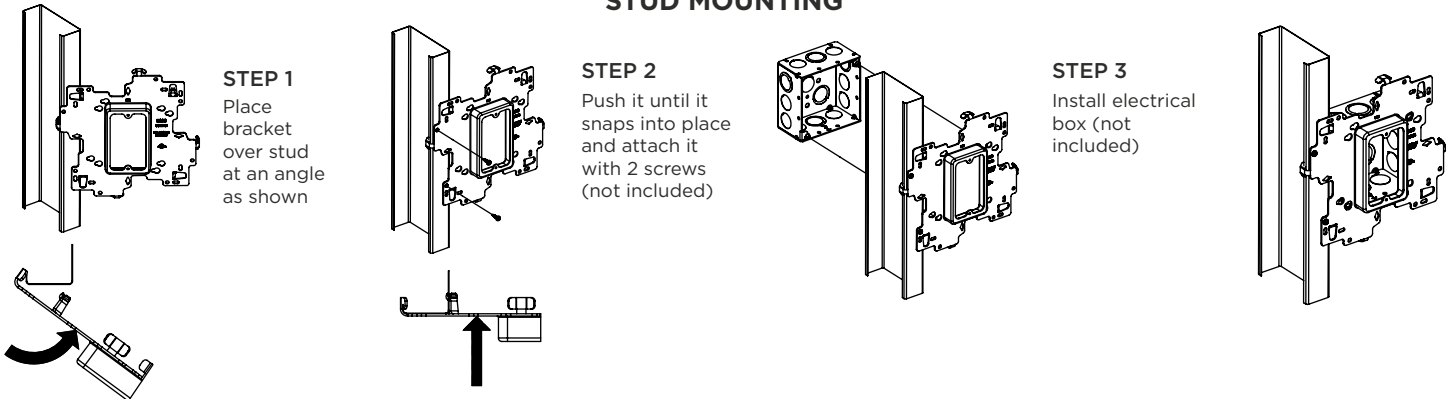


BRACE MOUNTING

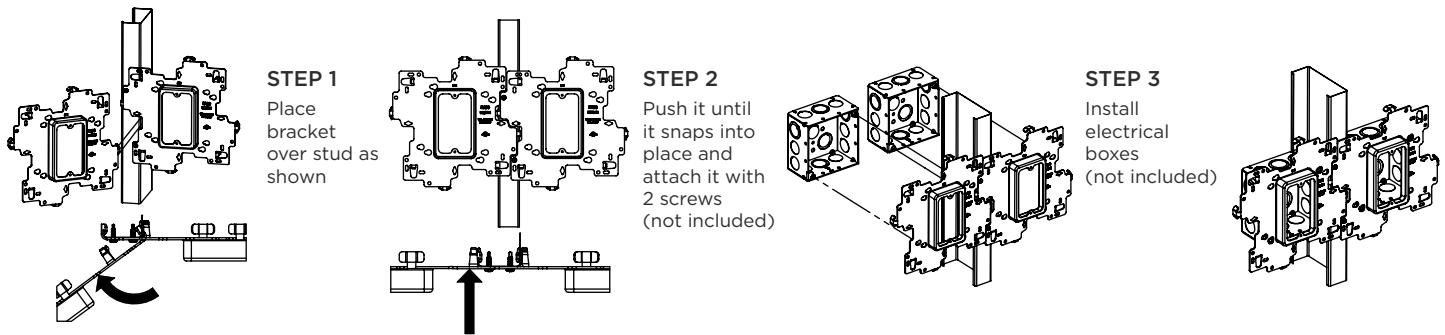


UNIVERSAL STUD MOUNT BRACKET “USMB134, USMB158, USMB234 & USMB258” Instruction Sheet

STUD MOUNTING



SIDE BY SIDE STUD MOUNTING



BRACE MOUNTING

