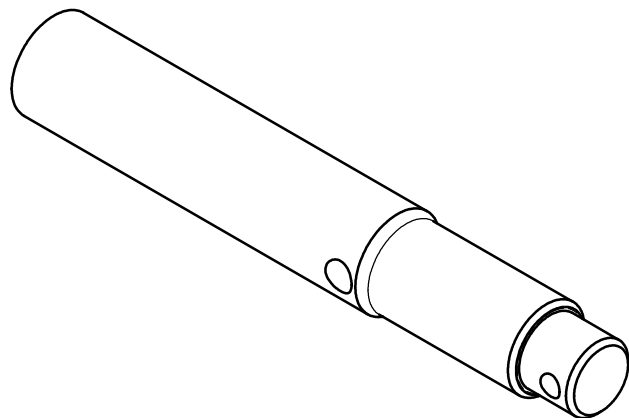
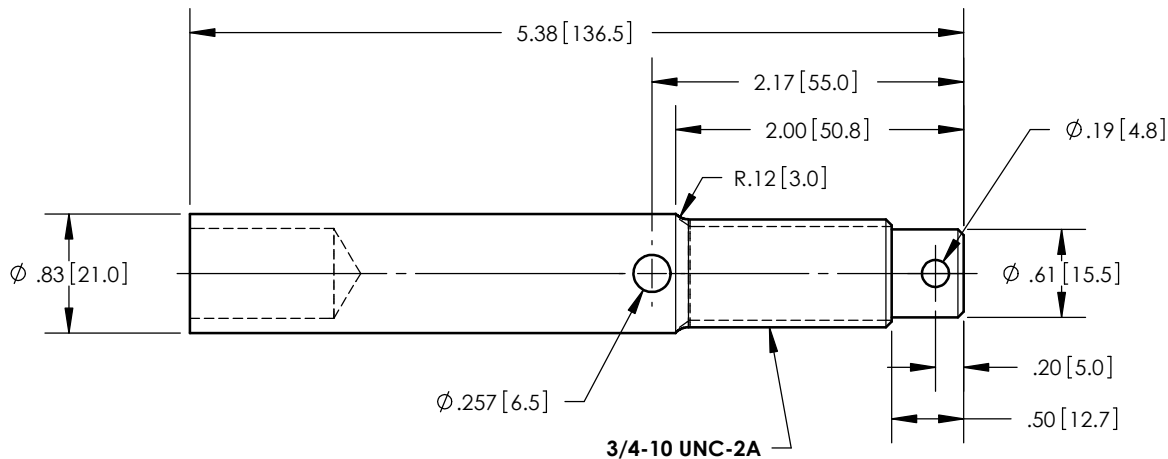
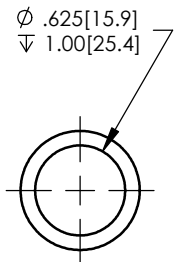


NOTES:

- 1 MATERIAL: ELECTROLYTIC COPPER ALLOY, TYPE 110 ETP, ASTM B187 (B)
- 2 MINIMUM SURFACE FINISH 125 MICROINCHES REQUIRED ON ALL SURFACES UNLESS OTHERWISE NOTED

RÉVISIONS					
ZONE	REV.	DESCRIPTION	DESSINÉ PAR	DATE	APPR.
	A	LENGTHEN THE 0.83" OF DIAMETER SECTION BEYOND THE CENTER DOWEL PIN HOLE	I. LÉVEILLÉ	2008-02-07	
F5	B	ADD THE NOTE # 1 & # 2 ABOUT THE MATERIAL & THE SURFACE FINISH	J. CLICHE	2014-03-18	Y.V.



ITEM NO.	QTY	DRAWING NO.	PART NO.	DESCRIPTION	NOTE / MAT'L
1	1	S-4438-3949		CONNECTOR 3/4-10 UN, FEMALE Ø5/8 x 1.00" DEPTH	COPPER

PARTS LIST

<p>GENERAL TOLERANCES (UNLESS OTHERWISE SPECIFIED)</p> <p>X. ±0.040 .X ±0.020 .XX ±0.010 .XXX ±0.004 ANGLES ±0.25° RADIUS ±0.010</p> <p>REMOVE BURRS AND BREAK SHARP EDGES</p> <p>DIMENSIONS ARE IN INCHES (UNLESS OTHERWISE SPECIFIED)</p>		<p><b>Electro Composites™</b> <b>solid HV bushings solution</b></p> <p>TITLE: CONNECTOR 3/4-10 UN WITH FEMALE Ø5/8 x 1.00</p>	
<p>DRAWN BY: I. LÉVEILLÉ</p> <p>CHECK BY:</p> <p>PROJECTING:</p> <p>PROJECT MANAGER:</p>	<p>DATE: 2006/09/07</p>	<p>FORMAT: A</p> <p>SCALE: 1 : 2</p>	<p>DRAWING NO.: S-4438-3949</p> <p>REVISION: B</p> <p>GENERATED BY: SolidWorks 2013</p> <p>SHEET: 1 of 1</p>

This drawing is the proprietary property of Electro Composites (2008) ULC, not part of the public domain, and is issued with the express understanding and agreement that it is not to be reproduced or copied in whole or in part or issued for furnishing information to others, or used directly or indirectly, in any way detrimental to the interest of Electro Composites (2008) ULC and is to be returned upon request by Electro Composites (2008) ULC. All Rights Reserved.