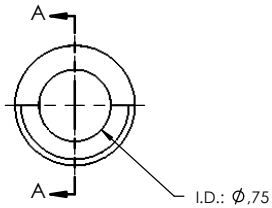
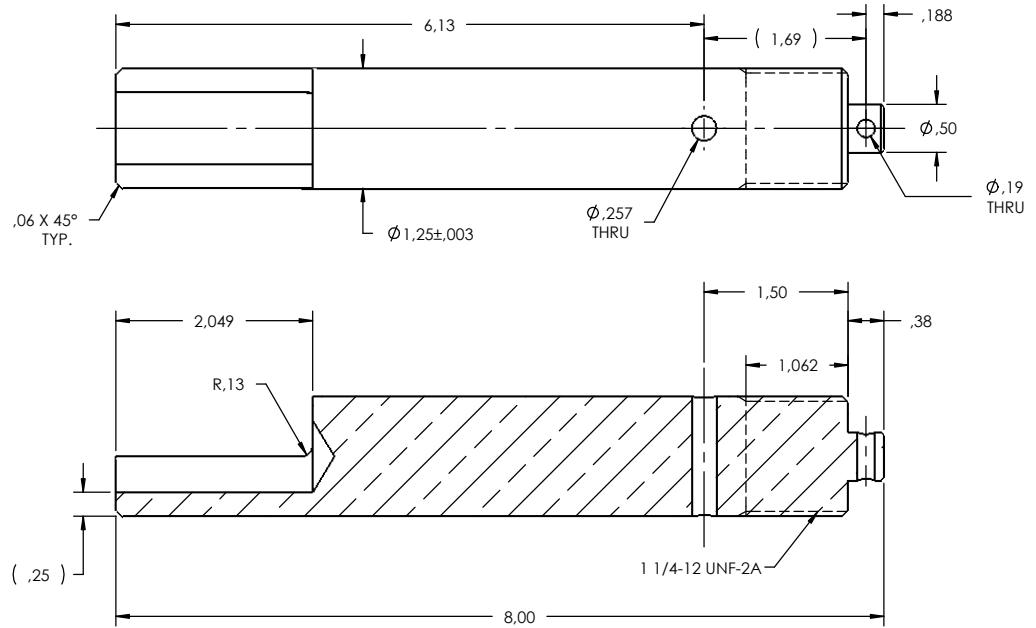
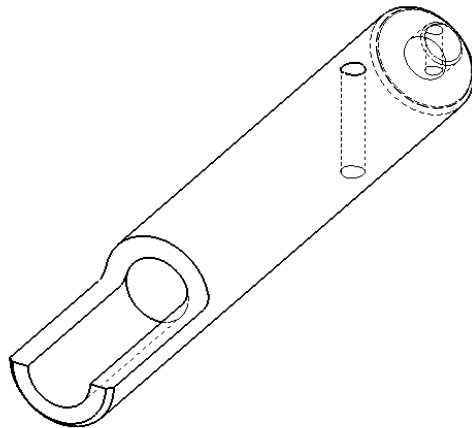


- NOTES:
- 1 MATERIAL: ELECTROLYTIC COPPER ALLOY, TYPE 110 ETP, ASTM B187
 - 2 A MINIMUM SURFACE FINISH OF 125 MICRINCHES IS REQUIRED ON ALL SURFACES UNLESS OTHERWISE SPECIFIED.

RÉVISIONS					
ZONE	REV.	DESCRIPTION	DESSINÉ PAR	DATE	APPR.
	A	PRECISION ON THE POSITIONNING OF THE Ø0.26 DOWEL PIN HOLE	A.SAVARD	2009-10-29	J.V.
F5 E3	B	ADD THE NOTE #1 & #2 ABOUT THE MATERIAL & THE SURFACE FINISH ADD THE TOLERANCE OF ±.003" ON THE DIAMETER OF THE ROD	J. CLICHE	2014-03-18	Y.V.
A2, C2	C	MINOR UPDATE	J.CLICHE	2014-04-25	J.V.
	D	UPDATE	A.SAVARD	2014-04-28	J.V.



SECTION A-A



ITEM NO.	QTY	DRAWING NO.	PART NO.	DESCRIPTION	NOTE / MATL
1	1	S-5023-5119		CONNECTOR	COPPER

PARTS LIST

GENERAL TOLERANCES (UNLESS OTHERWISE SPECIFIED)		DRAWN BY: D. DELISLE		DATE: 2008/11/12		ElectroComposites™ solid HV bushings solution	
X.	±0.040					TITLE: CONNECTOR 1 1/4-12 UNF WITH FEMALE Ø3/4 X 2" DEPTH	
.X	±0.020					FORMAT: A	CAGE CODE:
.XX	±0.010					DRAWING NO.: S-5023-5119	
.XXX	±0.004					REVISION: D	
ANGLES	±0.25°					SCALE: 1:2	
RADIUS	±0.010					GENERATED BY: SolidWorks 2013	
REMOVE BURRS AND BREAK SHARP EDGES						SHEET: 1 of 1	
DIMENSIONS ARE IN INCHES (UNLESS OTHERWISE SPECIFIED)							

This drawing is the proprietary property of Electro Composites (2008) ULC, not part of the public domain, and is issued with the express understanding and agreement that it is not to be reproduced or copied in whole or in part or issued for furnishing information to others, or used directly or indirectly, in any way detrimental to the interest of Electro Composites (2008) ULC and is to be returned upon request by Electro Composites (2008) ULC. All Rights Reserved.