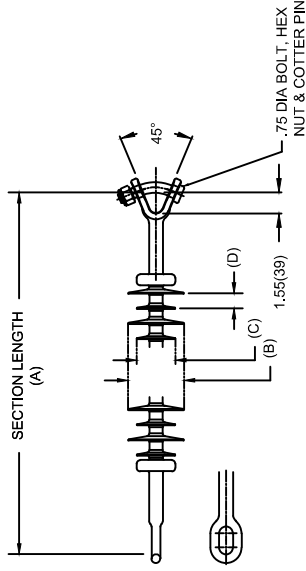


# OHIO BRASS QUADRI\*SIL SUSPENSION INSULATOR

CAT NO.: S025023H2100	
REV: 00	March 4, 2018



HUBBELL POWER SYSTEMS, INC.  
 CUSTOMER SERVICE: (573) 682-5521  
 www.hubbellpowersystems.com



MECHANICAL VALUES	LBS	KN
SPECIFIED TENSILE LOAD (STL)	25000	111
MAX DESIGN TENSILE LOAD (RTL)	12500	55.5

ELECTRICAL VALUES	KV
60 HZ DRY FLASHOVER (DRY WITHSTAND)	250 -
60 HZ WET FLASHOVER (WET WITHSTAND)	235 (175)
CRITICAL IMPULSE FLASHOVER + (WITHSTAND)	415 (370)
CRITICAL IMPULSE FLASHOVER - (WITHSTAND)	395 (355)
RIV AT 115% SYSTEM VOLTAGE	≤100 μV

DIMENSIONAL VALUES	IN.	MM
SECTION LENGTH (A)	37	939
MAJOR SHED DIAMETER (B)	4	101
MINOR SHED DIAMETER (C)	2.8	71
DRY ARC DISTANCE	24.1	612
SHEATH THICKNESS	>0.118	>3
LEAKAGE DISTANCE	71	1803
SHED SPACING (D)	1.08	27.4
CORE ROD DIAMETER	0.625	15.9

END FITTINGS AND MATERIALS  
 LINE END: CHAIN\_EYE\_90\_DEG / GALV STEEL  
 TOWER END: Y-CLEVIS / GALV STEEL

- NOTES:  
 1. SILICONE RUBBER SHEATH AND SHEDS. WASHABLE PER IEEE P957  
 2. ELECTRICAL VALUES PER ANSI C29.12 (IEC 61109 & 62217)

OTHER DETAILS	
CORONA RING (TOWER)	NONE
CORONA RING (LINE)	NONE
TORQUE REQUIREMENTS	N/A
MOUNTING ANGLE	-
NUMBER OF SHEDS	22
WEIGHT	7.6 lbs. 3.4 kg.